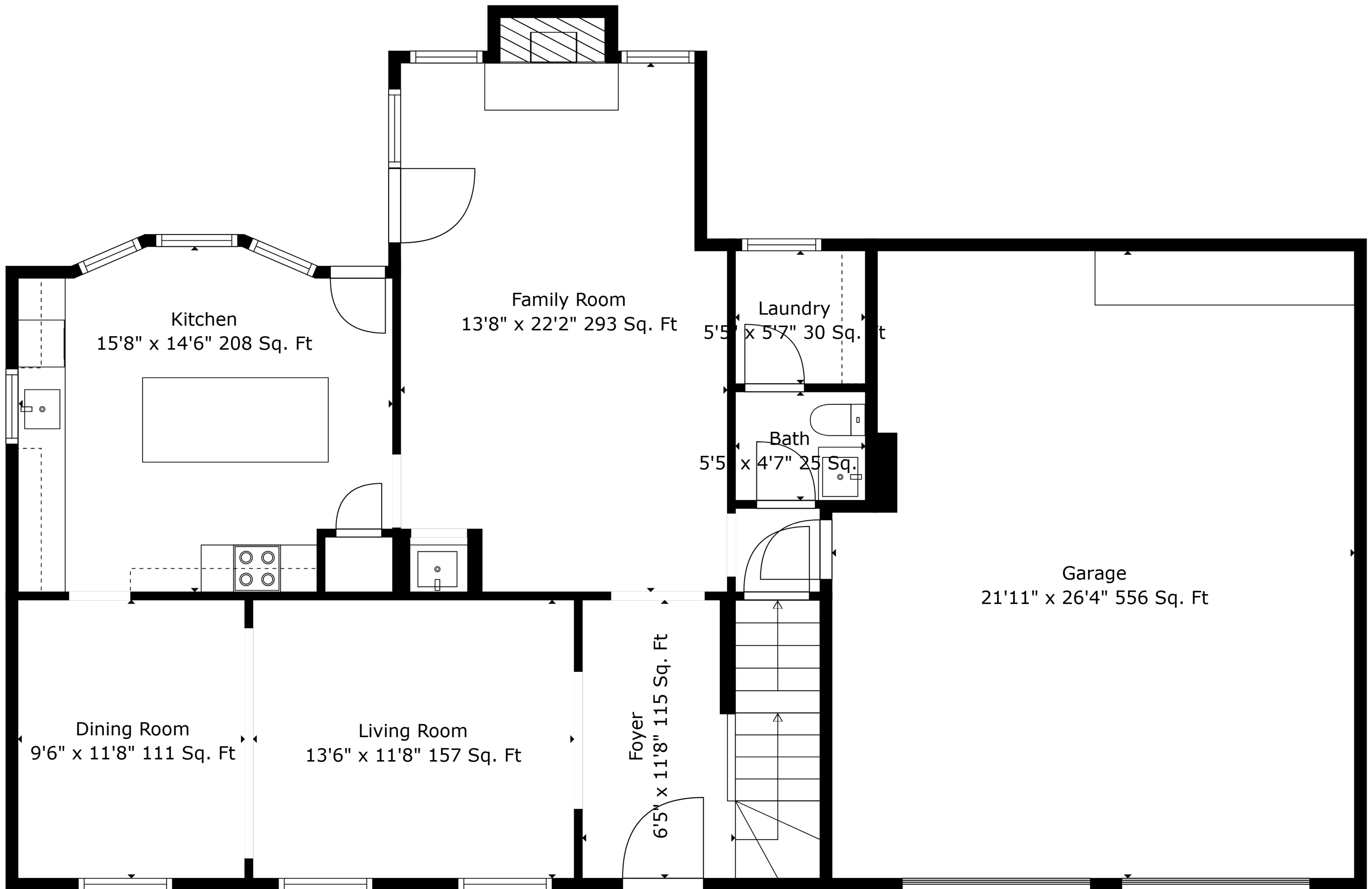


Basement
36'10" x 34'2" 969 Sq. Ft

TOTAL: 2239 sq. ft

BELOW GROUND: 0 sq. ft, FLOOR 2: 997 sq. ft, FLOOR 3: 1242 sq. ft
EXCLUDED AREAS: BASEMENT: 969 sq. ft, GARAGE: 556 sq. ft, FIREPLACE: 10 sq. ft,
LOW CEILING: 31 sq. ft, OPEN TO BELOW: 213 sq. ft, BAY WINDOW: 18 sq. ft

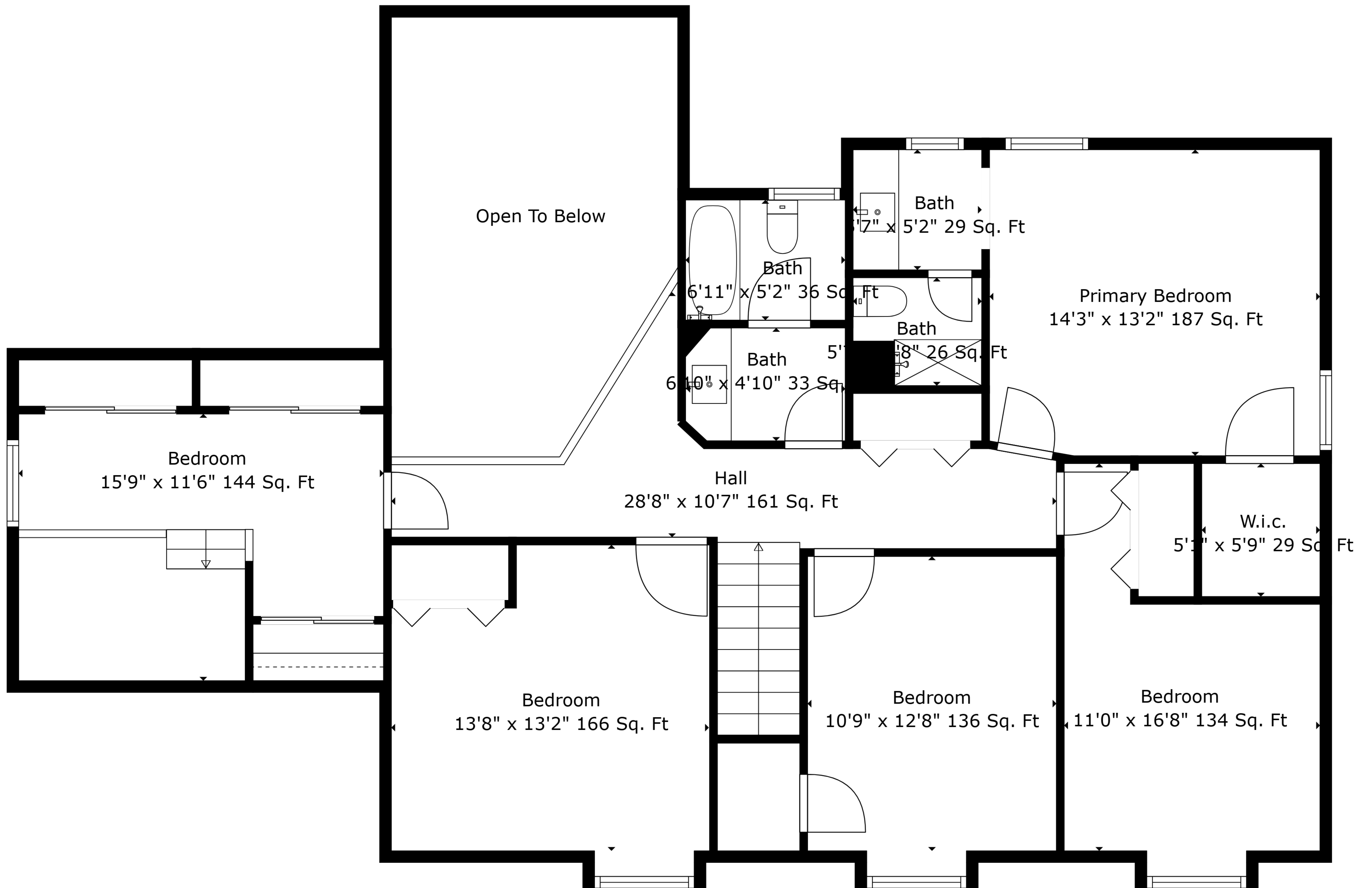
Measurements Are Deemed Highly Reliable But Not Guaranteed.



TOTAL: 2239 sq. ft

BELOW GROUND: 0 sq. ft, FLOOR 2: 997 sq. ft, FLOOR 3: 1242 sq. ft
 EXCLUDED AREAS: BASEMENT: 969 sq. ft, GARAGE: 556 sq. ft, FIREPLACE: 10 sq. ft,
 LOW CEILING: 31 sq. ft, OPEN TO BELOW: 213 sq. ft, BAY WINDOW: 18 sq. ft

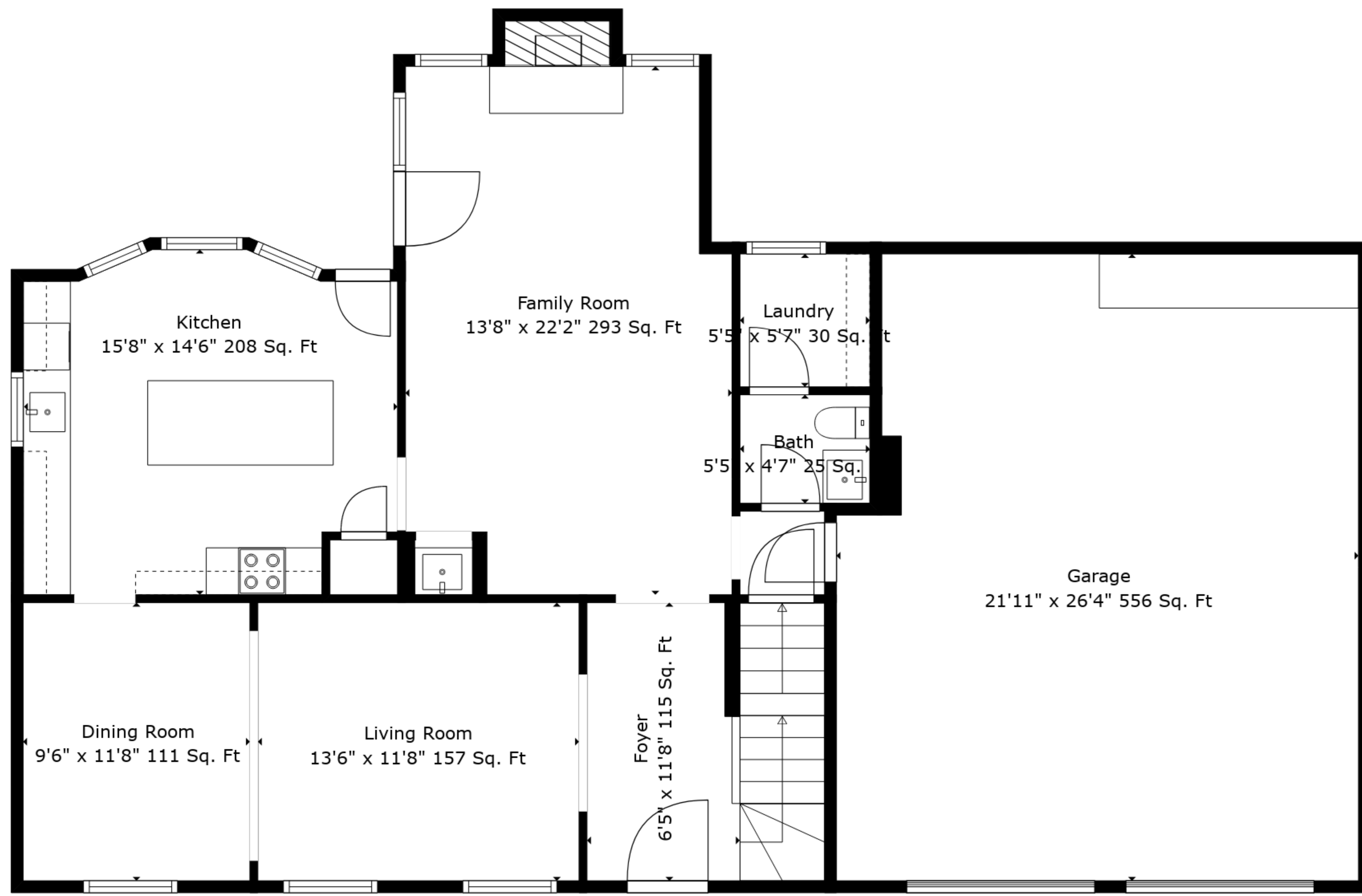
Measurements Are Deemed Highly Reliable But Not Guaranteed.



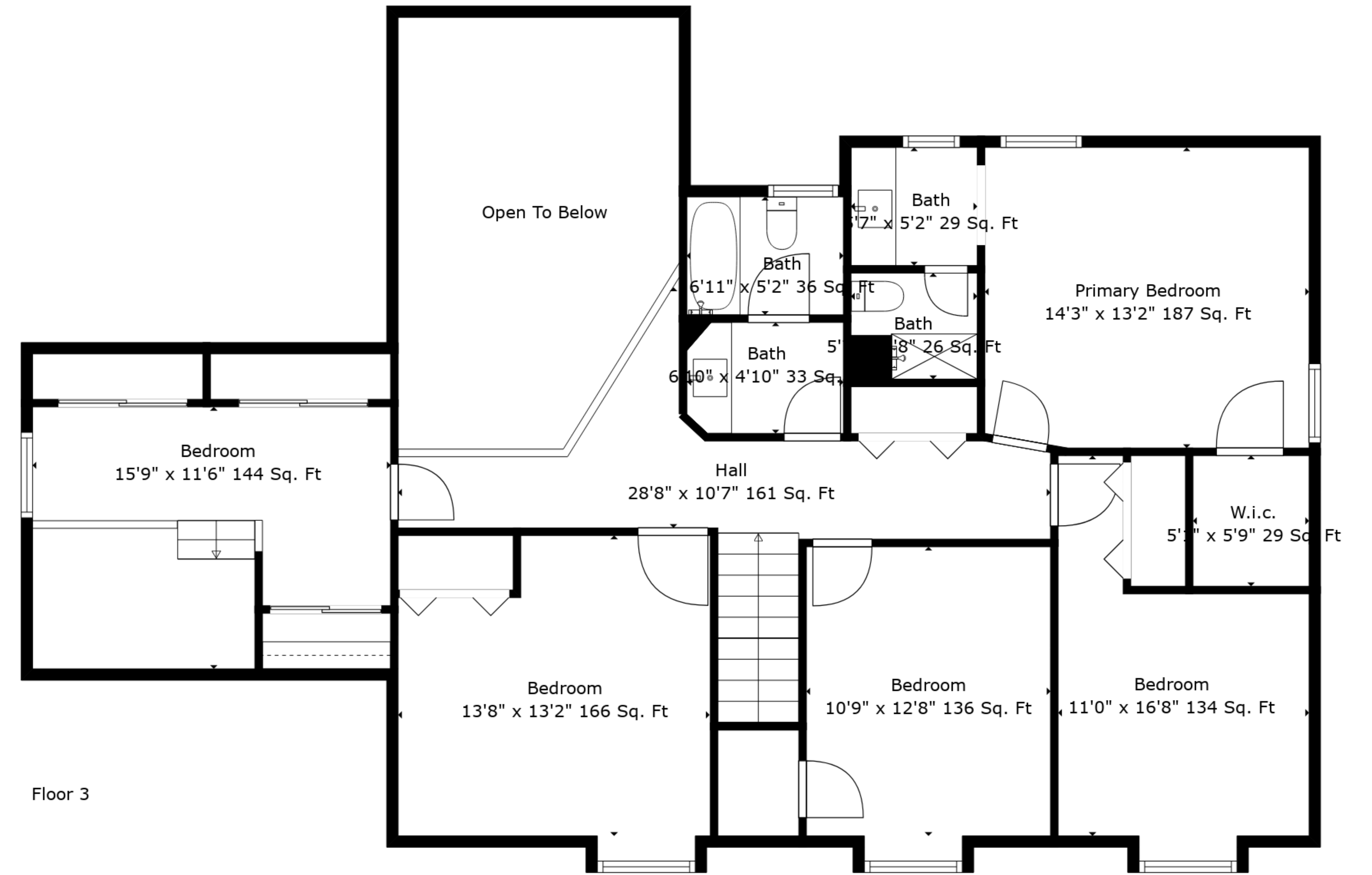
TOTAL: 2239 sq. ft

BELOW GROUND: 0 sq. ft, FLOOR 2: 997 sq. ft, FLOOR 3: 1242 sq. ft
 EXCLUDED AREAS: BASEMENT: 969 sq. ft, GARAGE: 556 sq. ft, FIREPLACE: 10 sq. ft,
 LOW CEILING: 31 sq. ft, OPEN TO BELOW: 213 sq. ft, BAY WINDOW: 18 sq. ft

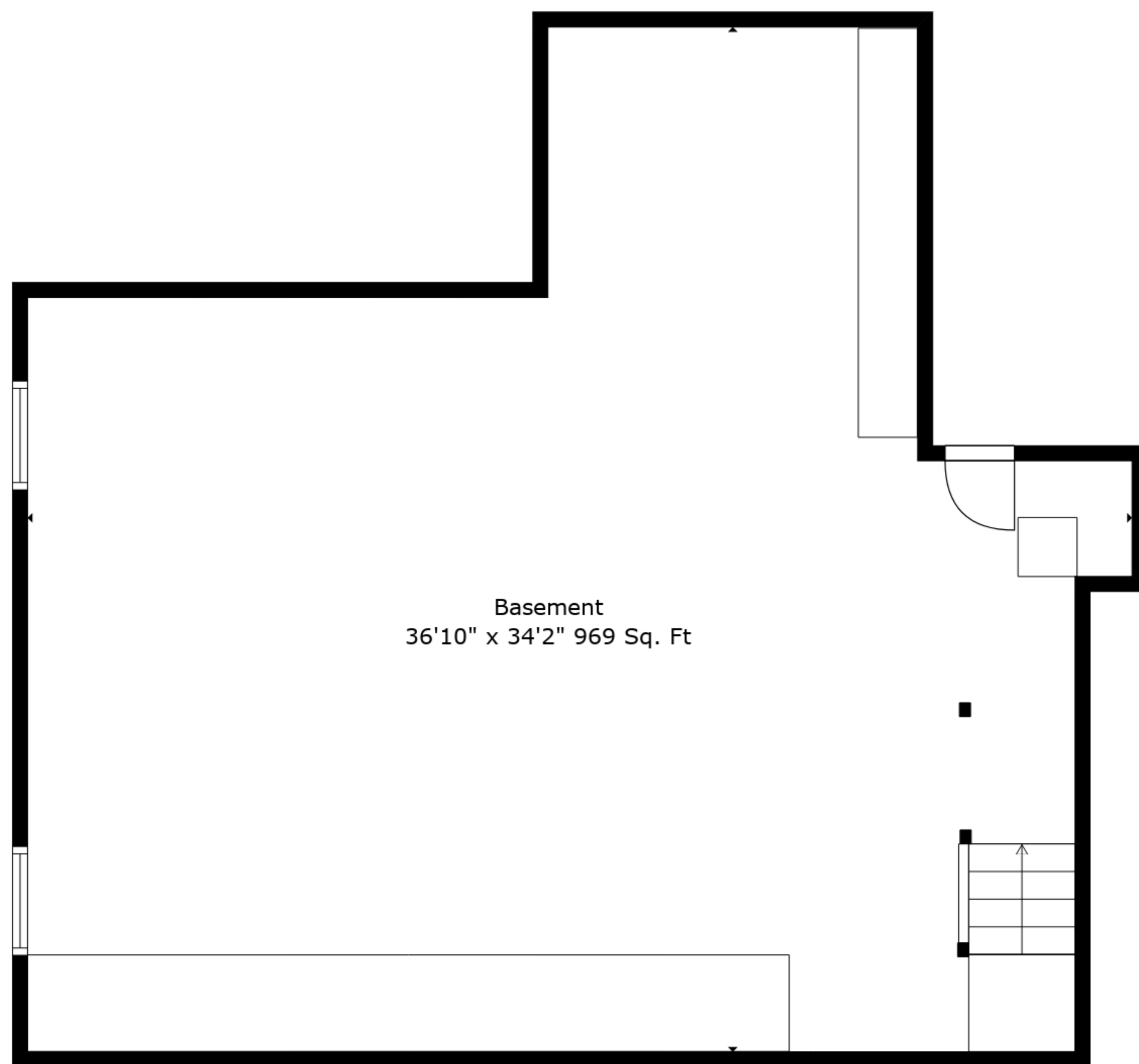
Measurements Are Deemed Highly Reliable But Not Guaranteed.



Floor 2



Floor 3



Floor 1

TOTAL: 2239 sq. ft
 BELOW GROUND: 0 sq. ft, FLOOR 2: 997 sq. ft, FLOOR 3: 1242 sq. ft
 EXCLUDED AREAS: BASEMENT: 969 sq. ft, GARAGE: 556 sq. ft, FIREPLACE: 10 sq. ft,
 LOW CEILING: 31 sq. ft, OPEN TO BELOW: 213 sq. ft, BAY WINDOW: 18 sq. ft

Measurements Are Deemed Highly Reliable But Not Guaranteed.