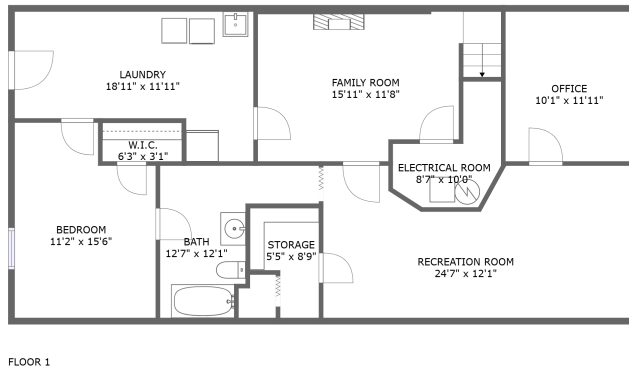


# 2045 Lipscomb Road, Moneta, Bedford County, Virginia, United States, 24121

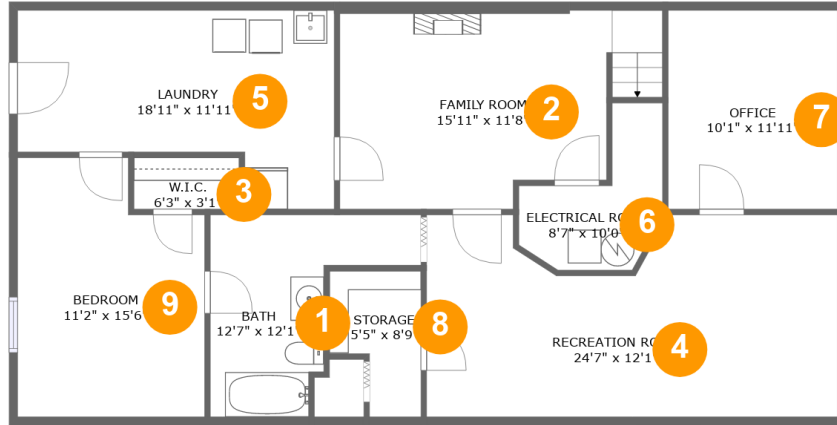


## Property Summary

**0** garages    **4** bedrooms    **3** bathrooms    **0** half baths

**2** floors    **2,487** Gross Living Area sqft    **2,746** total sqft

# 2045 Lipscomb Road, Moneta, Bedford County, Virginia, United States, 24121



## Room Dimensions

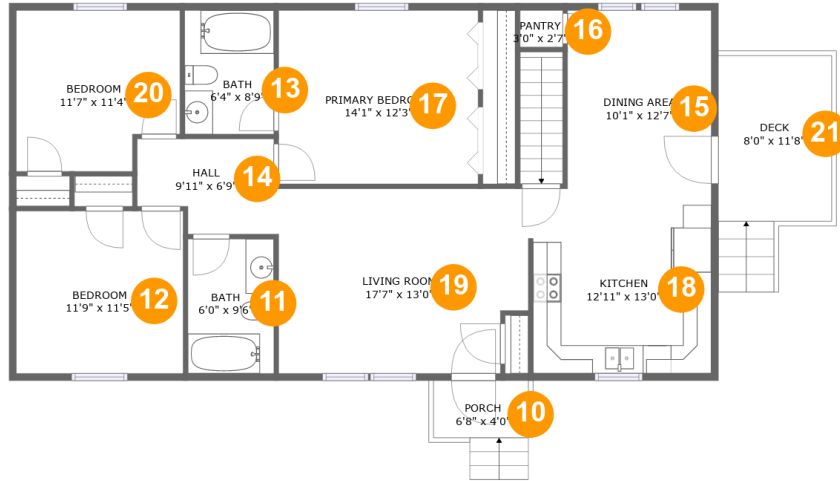
Floor 1

Total sqft: 1264

Living area: 1157

#	Room name	Dimensions	Area (sqft)	Counted as Living Area
1	Bath	12'7" x 12'1"	97 sq. ft	Yes
2	Family Room	15'11" x 11'8"	193 sq. ft	Yes
3	W.i.c.	6'3" x 3'1"	19 sq. ft	Yes
4	Recreation Room	24'7" x 12'1"	269 sq. ft	Yes
5	Laundry	18'11" x 11'11"	178 sq. ft	Yes
6	Electrical Room	8'7" x 10'0"	53 sq. ft	No
7	Office	10'1" x 11'11"	120 sq. ft	Yes
8	Storage	5'5" x 8'9"	39 sq. ft	No
9	Bedroom	11'2" x 15'6"	158 sq. ft	Yes

# 2045 Lipscomb Road, Moneta, Bedford County, Virginia, United States, 24121



## Room Dimensions

Floor 2

Total sqft: 1482

Living area: 1330

#	Room name	Dimensions	Area (sqft)	Counted as Living Area
10	Porch	6'8" x 4'0"	39 sq. ft	No
11	Bath	6'0" x 9'6"	57 sq. ft	Yes
12	Bedroom	11'9" x 11'5"	135 sq. ft	Yes
13	Bath	6'4" x 8'9"	55 sq. ft	Yes
14	Hall	9'11" x 6'9"	59 sq. ft	Yes
15	Dining Area	10'1" x 12'7"	127 sq. ft	Yes
16	Pantry	3'0" x 2'7"	8 sq. ft	Yes
17	Primary Bedroom	14'1" x 12'3"	172 sq. ft	Yes
18	Kitchen	12'11" x 13'0"	165 sq. ft	Yes
19	Living Room	17'7" x 13'0"	221 sq. ft	Yes
20	Bedroom	11'7" x 11'4"	122 sq. ft	Yes

Scan captured on Fri, 20 Sep 2024 20:18:52 GMT

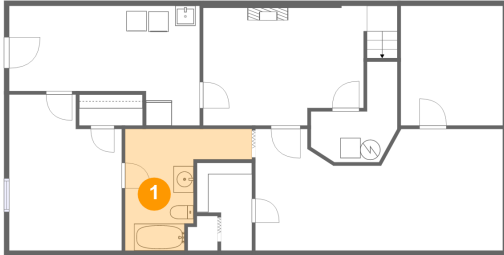
Information is calculated by CubiCasa technology; deemed highly reliable but not guaranteed.

**2045 Lipscomb Road, Moneta, Bedford County,  
Virginia, United States, 24121**

#	Room name	Dimensions	Area (sqft)	Counted as Living Area
21	Deck	8'0" x 11'8"	113 sq. ft	No

# 2045 Lipscomb Road, Moneta, Bedford County, Virginia, United States, 24121

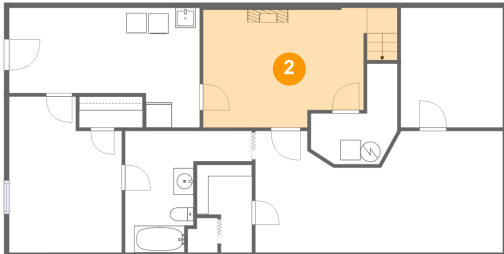
## 1 Floor 1 - Bath



Dimensions: 12'7" x 12'1"  
Area: 97 sq. ft  
Counted as Living Area:  
Yes

Heated: Yes  
Finished: Yes  
Enclosed: Yes  
Contiguous:  
Yes  
Permitted: Yes  
Wet Space: Yes  
Addition: No  
Conversion: No

## 2 Floor 1 - Family Room

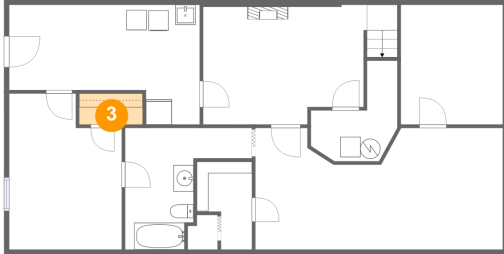


Dimensions: 15'11" x 11'8"  
Area: 193 sq. ft  
Counted as Living Area:  
Yes

Heated: Yes  
Finished: Yes  
Enclosed: Yes  
Contiguous:  
Yes  
Permitted: Yes  
Wet Space: No  
Addition: No  
Conversion: No

# 2045 Lipscomb Road, Moneta, Bedford County, Virginia, United States, 24121

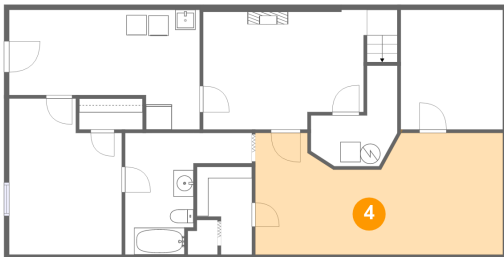
## 3 Floor 1 - W.i.c.



Dimensions: 6'3" x 3'1"  
Area: 19 sq. ft  
Counted as Living Area:  
Yes

Heated: Yes  
Finished: Yes  
Enclosed: Yes  
Contiguous:  
Yes  
Permitted: Yes  
Wet Space: No  
Addition: No  
Conversion: No

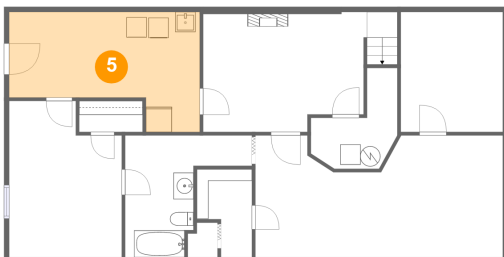
## 4 Floor 1 - Recreation Room



Dimensions: 24'7" x 12'1"  
Area: 269 sq. ft  
Counted as Living Area:  
Yes

Heated: Yes  
Finished: Yes  
Enclosed: Yes  
Contiguous:  
Yes  
Permitted: Yes  
Wet Space: No  
Addition: No  
Conversion: No

## 5 Floor 1 - Laundry

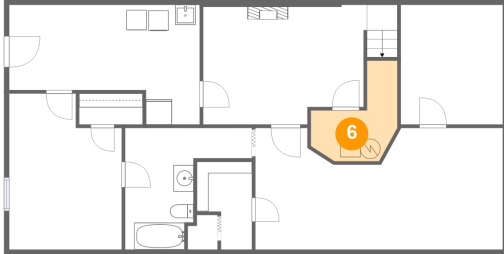


Dimensions: 18'11" x 11'11"  
Area: 178 sq. ft  
Counted as Living Area:  
Yes

Heated: Yes  
Finished: Yes  
Enclosed: Yes  
Contiguous:  
Yes  
Permitted: Yes  
Wet Space: No  
Addition: No  
Conversion: No

# 2045 Lipscomb Road, Moneta, Bedford County, Virginia, United States, 24121

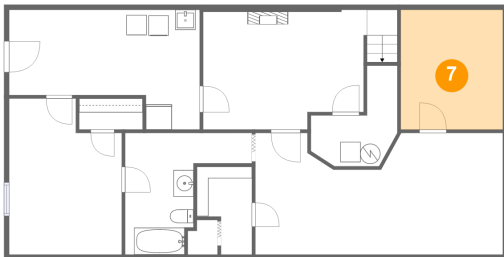
## 6 Floor 1 - Electrical Room



Dimensions: 8'7" x 10'0"  
Area: 53 sq. ft  
Counted as Living Area: No

Heated: No  
Finished: No  
Enclosed: Yes  
Contiguous: Yes  
Permitted: Yes  
Wet Space: No  
Addition: No  
Conversion: No

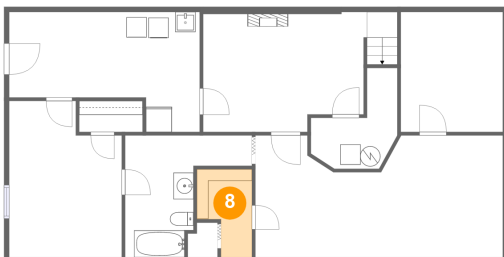
## 7 Floor 1 - Office



Dimensions: 10'1" x 11'11"  
Area: 120 sq. ft  
Counted as Living Area: Yes

Heated: Yes  
Finished: Yes  
Enclosed: Yes  
Contiguous: Yes  
Permitted: Yes  
Wet Space: No  
Addition: No  
Conversion: No

## 8 Floor 1 - Storage

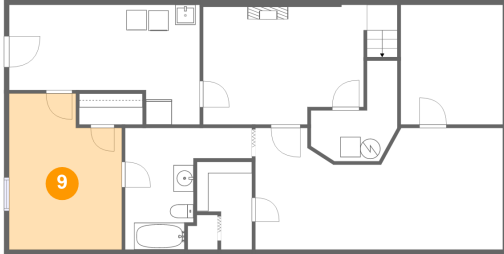


Dimensions: 5'5" x 8'9"  
Area: 39 sq. ft  
Counted as Living Area: No

Heated: No  
Finished: Yes  
Enclosed: No  
Contiguous: Yes  
Permitted: Yes  
Wet Space: No  
Addition: No  
Conversion: No

# 2045 Lipscomb Road, Moneta, Bedford County, Virginia, United States, 24121

## 9 Floor 1 - Bedroom



Dimensions: 11'2" x 15'6"  
Area: 158 sq. ft  
Counted as Living Area:  
Yes

Heated: Yes  
Finished: Yes  
Enclosed: Yes  
Contiguous:  
Yes  
Permitted: Yes  
Wet Space: No  
Addition: No  
Conversion: No

## 10 Floor 2 - Porch



Dimensions: 6'8" x 4'0"  
Area: 39 sq. ft  
Counted as Living Area: No

Heated: No  
Finished: Yes  
Enclosed: No  
Contiguous: Yes  
Permitted: Yes  
Wet Space: No  
Addition: No  
Conversion: No

## 11 Floor 2 - Bath



Dimensions: 6'0" x 9'6"  
Area: 57 sq. ft  
Counted as Living Area:  
Yes

Heated: Yes  
Finished: Yes  
Enclosed: Yes  
Contiguous:  
Yes  
Permitted: Yes  
Wet Space: Yes  
Addition: No  
Conversion: No



# 2045 Lipscomb Road, Moneta, Bedford County, Virginia, United States, 24121

## 12 Floor 2 - Bedroom



Dimensions: 11'9" x 11'5"  
Area: 135 sq. ft  
Counted as Living Area:  
Yes

Heated: Yes  
Finished: Yes  
Enclosed: Yes  
Contiguous:  
Yes  
Permitted: Yes  
Wet Space: No  
Addition: No  
Conversion: No

## 13 Floor 2 - Bath



Dimensions: 6'4" x 8'9"  
Area: 55 sq. ft  
Counted as Living Area:  
Yes

Heated: Yes  
Finished: Yes  
Enclosed: Yes  
Contiguous:  
Yes  
Permitted: Yes  
Wet Space: Yes  
Addition: No  
Conversion: No

## 14 Floor 2 - Hall



Dimensions: 9'11" x 6'9"  
Area: 59 sq. ft  
Counted as Living Area:  
Yes

Heated: Yes  
Finished: Yes  
Enclosed: Yes  
Contiguous:  
Yes  
Permitted: Yes  
Wet Space: No  
Addition: No  
Conversion: No

# 2045 Lipscomb Road, Moneta, Bedford County, Virginia, United States, 24121

## 15 Floor 2 - Dining Area



Dimensions: 10'1" x 12'7"  
Area: 127 sq. ft  
Counted as Living Area:  
Yes

Heated: Yes  
Finished: Yes  
Enclosed: Yes  
Contiguous:  
Yes  
Permitted: Yes  
Wet Space: No  
Addition: No  
Conversion: No

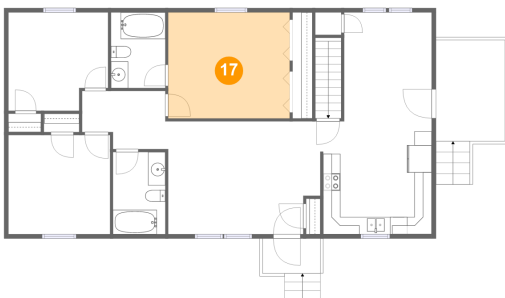
## 16 Floor 2 - Pantry



Dimensions: 3'0" x 2'7"  
Area: 8 sq. ft  
Counted as Living Area:  
Yes

Heated: Yes  
Finished: Yes  
Enclosed: Yes  
Contiguous:  
Yes  
Permitted: Yes  
Wet Space: No  
Addition: No  
Conversion: No

## 17 Floor 2 - Primary Bedroom



Dimensions: 14'1" x 12'3"  
Area: 172 sq. ft  
Counted as Living Area:  
Yes

Heated: Yes  
Finished: Yes  
Enclosed: Yes  
Contiguous:  
Yes  
Permitted: Yes  
Wet Space: No  
Addition: No  
Conversion: No

# 2045 Lipscomb Road, Moneta, Bedford County, Virginia, United States, 24121

## 18 Floor 2 - Kitchen



Dimensions: 12'11" x 13'0"  
Area: 165 sq. ft  
Counted as Living Area:  
Yes

Heated: Yes  
Finished: Yes  
Enclosed: Yes  
Contiguous:  
Yes  
Permitted: Yes  
Wet Space: No  
Addition: No  
Conversion: No

## 19 Floor 2 - Living Room



Dimensions: 17'7" x 13'0"  
Area: 221 sq. ft  
Counted as Living Area:  
Yes

Heated: Yes  
Finished: Yes  
Enclosed: Yes  
Contiguous:  
Yes  
Permitted: Yes  
Wet Space: No  
Addition: No  
Conversion: No

## 20 Floor 2 - Bedroom



Dimensions: 11'7" x 11'4"  
Area: 122 sq. ft  
Counted as Living Area:  
Yes

Heated: Yes  
Finished: Yes  
Enclosed: Yes  
Contiguous:  
Yes  
Permitted: Yes  
Wet Space: No  
Addition: No  
Conversion: No

# 2045 Lipscomb Road, Moneta, Bedford County, Virginia, United States, 24121

## 21 Floor 2 - Deck



Dimensions: 8'0" x 11'8"  
Area: 113 sq. ft  
Counted as Living Area: No

Heated: No  
Finished: Yes  
Enclosed: No  
Contiguous: Yes  
Permitted: Yes  
Wet Space: No  
Addition: No  
Conversion: No