

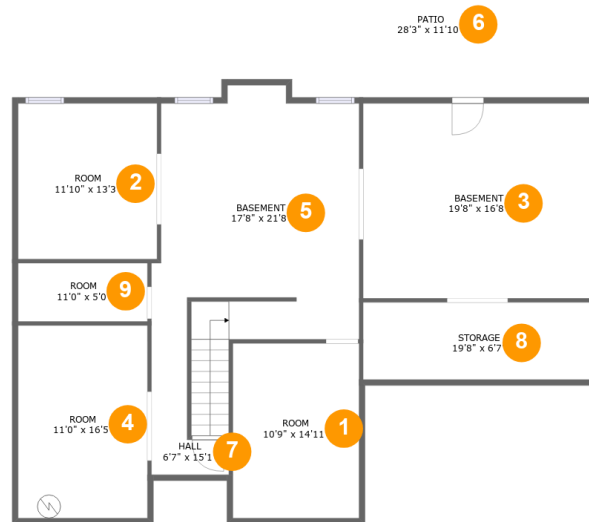
1945 Duncans Mill Ln, Jefferson, GA, US



Property summary

 **1** Garages  **5** Bedrooms  **4** Bathrooms  **0** Half baths

 **3** Floors  **3,554** Gross living area sqft  **6,443** Total sqft

1945 Duncans Mill Ln, Jefferson, GA, US**Room dimensions****Floor 1****Total sqft: 1906 Living area: 0**

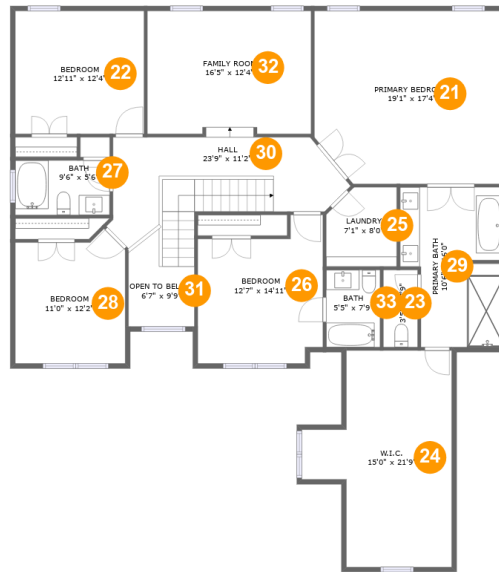
#		Dimensions	sqft	Counted as living area
1	Room	10'9" x 14'11"	161 sq. ft	No
2	Room	11'10" x 13'3"	157 sq. ft	No
3	Basement	19'8" x 16'8"	327 sq. ft	No
4	Room	11'0" x 16'5"	181 sq. ft	No
5	Basement	17'8" x 21'8"	365 sq. ft	No
6	Patio	28'3" x 11'10"	333 sq. ft	No
7	Hall	6'7" x 15'1"	57 sq. ft	No
8	Storage	19'8" x 6'7"	130 sq. ft	No
9	Room	11'0" x 5'0"	55 sq. ft	No

1945 Duncans Mill Ln, Jefferson, GA, US**Room dimensions**

Floor 2

Total sqft: 2489 Living area: 1557

#		Dimensions	sqft	Counted as living area
10	Garage	20'4" x 33'11"	656 sq. ft	No
11	Balcony	22'8" x 10'7"	229 sq. ft	No
12	Dining Room	10'9" x 14'11"	161 sq. ft	Yes
13	Bedroom	12'1" x 11'8"	141 sq. ft	Yes
14	Hall	9'9" x 5'3"	51 sq. ft	Yes
15	Living Room	28'5" x 20'1"	492 sq. ft	Yes
16	Foyer	6'7" x 14'0"	83 sq. ft	Yes
17	Sitting Room	11'0" x 14'2"	156 sq. ft	Yes
18	Kitchen	12'8" x 18'0"	216 sq. ft	Yes
19	Bath	7'8" x 8'10"	59 sq. ft	Yes
20	Pantry	6'9" x 7'0"	48 sq. ft	Yes

1945 Duncans Mill Ln, Jefferson, GA, US**Room dimensions**

Floor 3

Total sqft: 2048 Living area: 1997

#		Dimensions	sqft	Counted as living area
21	Primary Bedroom	19'1" x 17'4"	322 sq. ft	Yes
22	Bedroom	12'11" x 12'4"	159 sq. ft	Yes
23	WC	3'5" x 7'9"	27 sq. ft	Yes
24	W.I.C.	15'0" x 21'9"	252 sq. ft	Yes
25	Laundry	7'1" x 8'0"	53 sq. ft	Yes
26	Bedroom	12'7" x 14'11"	162 sq. ft	Yes
27	Bath	9'6" x 5'6"	52 sq. ft	Yes
28	Bedroom	11'0" x 12'2"	135 sq. ft	Yes
29	Primary Bath	10'6" x 16'0"	150 sq. ft	Yes
30	Hall	23'9" x 11'2"	198 sq. ft	Yes
31	Open To Below	6'7" x 9'9"	48 sq. ft	No

Scan captured on Wed, 26 Feb 2025 17:00:18 GMT

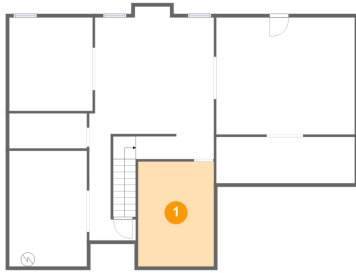
Information is calculated by Cubicasa technology deemed highly reliable but not guaranteed.

1945 Duncans Mill Ln, Jefferson, GA, US

#		Dimensions	sqft	Counted as living area
32	Family Room	16'5" x 12'4"	204 sq. ft	Yes
33	Bath	5'5" x 7'9"	42 sq. ft	Yes

1945 Duncans Mill Ln, Jefferson, GA, US

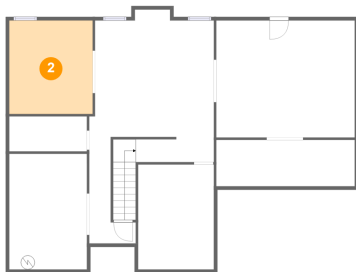
1 Floor 1 - Room



Dimensions: 10'9" x 14'11"
Area: 161 sq. ft
Counted as living area: No

Heated: Yes
Finished: No
Enclosed: Yes
Contiguous: Yes
Permitted: Yes
Wet space: No
Addition: No
Conversion: No

2 Floor 1 - Room

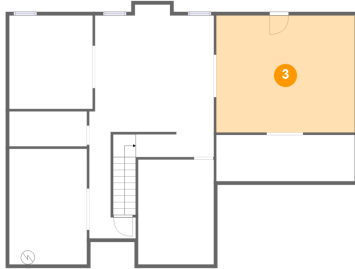


Dimensions: 11'10" x 13'3"
Area: 157 sq. ft
Counted as living area: No

Heated: Yes
Finished: No
Enclosed: Yes
Contiguous: Yes
Permitted: Yes
Wet space: No
Addition: No
Conversion: No

1945 Duncans Mill Ln, Jefferson, GA, US

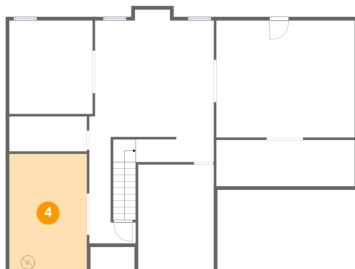
3 Floor 1 - Basement



Dimensions: 19'8" x 16'8"
Area: 327 sq. ft
Counted as living area: No

Heated: Yes
Finished: No
Enclosed: Yes
Contiguous: Yes
Permitted: Yes
Wet space: No
Addition: No
Conversion: No

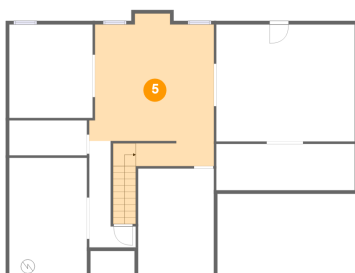
4 Floor 1 - Room



Dimensions: 11'0" x 16'5"
Area: 181 sq. ft
Counted as living area: No

Heated: Yes
Finished: No
Enclosed: Yes
Contiguous: Yes
Permitted: Yes
Wet space: No
Addition: No
Conversion: No

5 Floor 1 - Basement

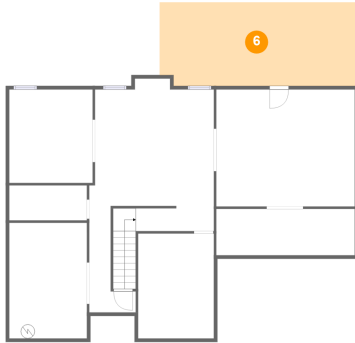


Dimensions: 17'8" x 21'8"
Area: 365 sq. ft
Counted as living area: No

Heated: Yes
Finished: No
Enclosed: Yes
Contiguous: Yes
Permitted: Yes
Wet space: No
Addition: No
Conversion: No

1945 Duncans Mill Ln, Jefferson, GA, US

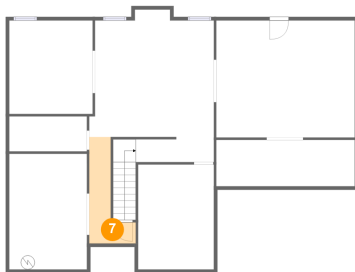
6 Floor 1 - Patio



Dimensions: 28'3" x 11'10"
Area: 333 sq. ft
Counted as living area: No

Heated: No
Finished: Yes
Enclosed: No
Contiguous: Yes
Permitted: Yes
Wet space: No
Addition: No
Conversion: No

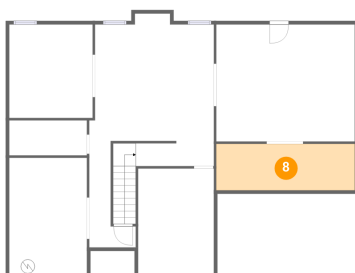
7 Floor 1 - Hall



Dimensions: 6'7" x 15'1"
Area: 57 sq. ft
Counted as living area: No

Heated: Yes
Finished: No
Enclosed: Yes
Contiguous: Yes
Permitted: Yes
Wet space: No
Addition: No
Conversion: No

8 Floor 1 - Storage

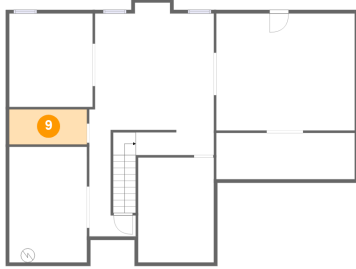


Dimensions: 19'8" x 6'7"
Area: 130 sq. ft
Counted as living area: No

Heated: No
Finished: No
Enclosed: No
Contiguous: Yes
Permitted: Yes
Wet space: No
Addition: No
Conversion: No

1945 Duncans Mill Ln, Jefferson, GA, US

9 Floor 1 - Room



Dimensions: 11'0" x 5'0"
Area: 55 sq. ft
Counted as living area: No

Heated: Yes
Finished: No
Enclosed: Yes
Contiguous: Yes
Permitted: Yes
Wet space: No
Addition: No
Conversion: No

10 Floor 2 - Garage



Dimensions: 20'4" x 33'11"
Area: 656 sq. ft
Counted as living area: No

Heated: No
Finished: No
Enclosed: Yes
Contiguous: Yes
Permitted: Yes
Wet space: No
Addition: No
Conversion: No

11 Floor 2 - Balcony



Dimensions: 22'8" x 10'7"
Area: 229 sq. ft
Counted as living area: No

Heated: No
Finished: Yes
Enclosed: No
Contiguous: Yes
Permitted: Yes
Wet space: No
Addition: No
Conversion: No

1945 Duncans Mill Ln, Jefferson, GA, US

12 Floor 2 - Dining Room



Dimensions: 10'9" x 14'11"
Area: 161 sq. ft
Counted as living area: Yes

Heated: Yes
Finished: Yes
Enclosed: Yes
Contiguous: Yes
Permitted: Yes
Wet space: No
Addition: No
Conversion: No

13 Floor 2 - Bedroom



Dimensions: 12'1" x 11'8"
Area: 141 sq. ft
Counted as living area: Yes

Heated: Yes
Finished: Yes
Enclosed: Yes
Contiguous: Yes
Permitted: Yes
Wet space: No
Addition: No
Conversion: No

14 Floor 2 - Hall



Dimensions: 9'9" x 5'3"
Area: 51 sq. ft
Counted as living area: Yes

Heated: Yes
Finished: Yes
Enclosed: Yes
Contiguous: Yes
Permitted: Yes
Wet space: No
Addition: No
Conversion: No

15 Floor 2 - Living Room



Dimensions: 28'5" x 20'1"
Area: 492 sq. ft
Counted as living area: Yes

Heated: Yes
Finished: Yes
Enclosed: Yes
Contiguous: Yes
Permitted: Yes
Wet space: No
Addition: No
Conversion: No

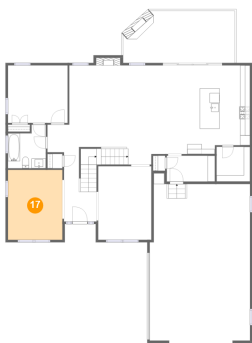
16 Floor 2 - Foyer



Dimensions: 6'7" x 14'0"
Area: 83 sq. ft
Counted as living area: Yes

Heated: Yes
Finished: Yes
Enclosed: Yes
Contiguous: Yes
Permitted: Yes
Wet space: No
Addition: No
Conversion: No

17 Floor 2 - Sitting Room



Dimensions: 11'0" x 14'2"
Area: 156 sq. ft
Counted as living area: Yes

Heated: Yes
Finished: Yes
Enclosed: Yes
Contiguous: Yes
Permitted: Yes
Wet space: No
Addition: No
Conversion: No

1945 Duncans Mill Ln, Jefferson, GA, US

18 Floor 2 - Kitchen



Dimensions: 12'8" x 18'0"
Area: 216 sq. ft
Counted as living area: Yes

Heated: Yes
Finished: Yes
Enclosed: Yes
Contiguous: Yes
Permitted: Yes
Wet space: No
Addition: No
Conversion: No

19 Floor 2 - Bath



Dimensions: 7'8" x 8'10"
Area: 59 sq. ft
Counted as living area: Yes

Heated: Yes
Finished: Yes
Enclosed: Yes
Contiguous: Yes
Permitted: Yes
Wet space: Yes
Addition: No
Conversion: No

20 Floor 2 - Pantry



Dimensions: 6'9" x 7'0"
Area: 48 sq. ft
Counted as living area: Yes

Heated: Yes
Finished: Yes
Enclosed: Yes
Contiguous: Yes
Permitted: Yes
Wet space: No
Addition: No
Conversion: No

1945 Duncans Mill Ln, Jefferson, GA, US

21 Floor 3 - Primary Bedroom



Dimensions: 19'1" x 17'4"
Area: 322 sq. ft
Counted as living area: Yes

Heated: Yes
Finished: Yes
Enclosed: Yes
Contiguous: Yes
Permitted: Yes
Wet space: No
Addition: No
Conversion: No

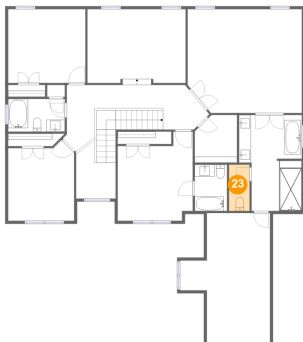
22 Floor 3 - Bedroom



Dimensions: 12'11" x 12'4"
Area: 159 sq. ft
Counted as living area: Yes

Heated: Yes
Finished: Yes
Enclosed: Yes
Contiguous: Yes
Permitted: Yes
Wet space: No
Addition: No
Conversion: No

23 Floor 3 - WC



Dimensions: 3'5" x 7'9"
Area: 27 sq. ft
Counted as living area: Yes

Heated: Yes
Finished: Yes
Enclosed: Yes
Contiguous: Yes
Permitted: Yes
Wet space: Yes
Addition: No
Conversion: No

1945 Duncans Mill Ln, Jefferson, GA, US

24 Floor 3 - W.I.C.



Dimensions: 15'0" x 21'9"
Area: 252 sq. ft
Counted as living area: Yes

Heated: Yes
Finished: Yes
Enclosed: Yes
Contiguous: Yes
Permitted: Yes
Wet space: No
Addition: No
Conversion: No

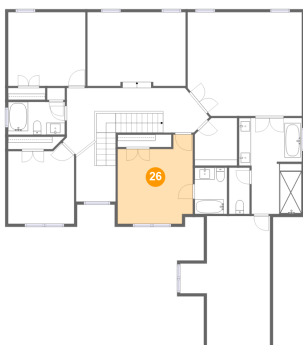
25 Floor 3 - Laundry



Dimensions: 7'1" x 8'0"
Area: 53 sq. ft
Counted as living area: Yes

Heated: Yes
Finished: Yes
Enclosed: Yes
Contiguous: Yes
Permitted: Yes
Wet space: No
Addition: No
Conversion: No

26 Floor 3 - Bedroom



Dimensions: 12'7" x 14'11"
Area: 162 sq. ft
Counted as living area: Yes

Heated: Yes
Finished: Yes
Enclosed: Yes
Contiguous: Yes
Permitted: Yes
Wet space: No
Addition: No
Conversion: No

1945 Duncans Mill Ln, Jefferson, GA, US

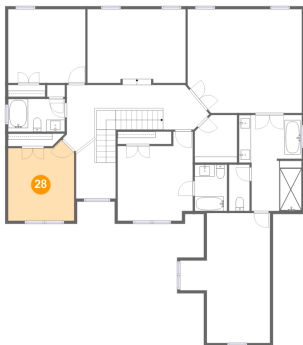
27 Floor 3 - Bath



Dimensions: 9'6" x 5'6"
Area: 52 sq. ft
Counted as living area: Yes

Heated: Yes
Finished: Yes
Enclosed: Yes
Contiguous: Yes
Permitted: Yes
Wet space: Yes
Addition: No
Conversion: No

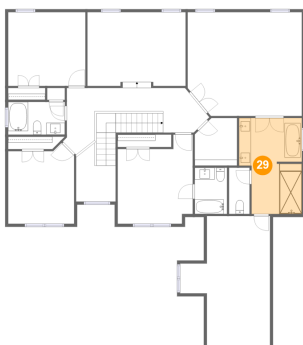
28 Floor 3 - Bedroom



Dimensions: 11'0" x 12'2"
Area: 135 sq. ft
Counted as living area: Yes

Heated: Yes
Finished: Yes
Enclosed: Yes
Contiguous: Yes
Permitted: Yes
Wet space: No
Addition: No
Conversion: No

29 Floor 3 - Primary Bath

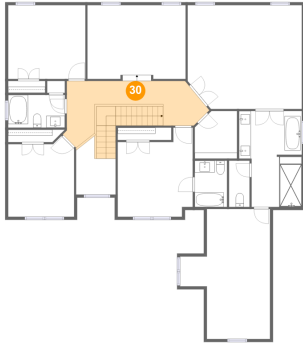


Dimensions: 10'6" x 16'0"
Area: 150 sq. ft
Counted as living area: Yes

Heated: Yes
Finished: Yes
Enclosed: Yes
Contiguous: Yes
Permitted: Yes
Wet space: Yes
Addition: No
Conversion: No

1945 Duncans Mill Ln, Jefferson, GA, US

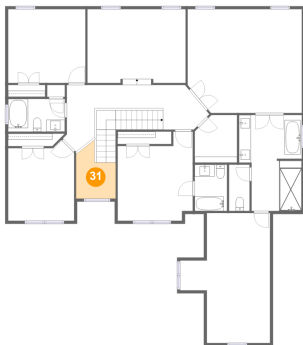
30 Floor 3 - Hall



Dimensions: 23'9" x 11'2"
Area: 198 sq. ft
Counted as living area: Yes

Heated: Yes
Finished: Yes
Enclosed: Yes
Contiguous: Yes
Permitted: Yes
Wet space: No
Addition: No
Conversion: No

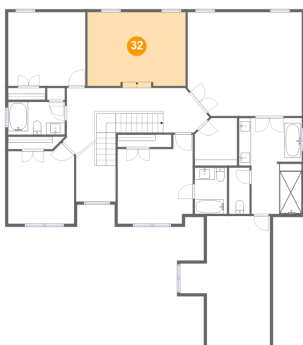
31 Floor 3 - Open To Below



Dimensions: 6'7" x 9'9"
Area: 48 sq. ft
Counted as living area: No

Heated: No
Finished: No
Enclosed: No
Contiguous: Yes
Permitted: No
Wet space: No
Addition: No
Conversion: No

32 Floor 3 - Family Room



Dimensions: 16'5" x 12'4"
Area: 204 sq. ft
Counted as living area: Yes

Heated: Yes
Finished: Yes
Enclosed: Yes
Contiguous: Yes
Permitted: Yes
Wet space: No
Addition: No
Conversion: No

1945 Duncans Mill Ln, Jefferson, GA, US

33 Floor 3 - Bath



Dimensions: 5'5" x 7'9"
Area: 42 sq. ft
Counted as living area: Yes

Heated: Yes
Finished: Yes
Enclosed: Yes
Contiguous: Yes
Permitted: Yes
Wet space: Yes
Addition: No
Conversion: No