

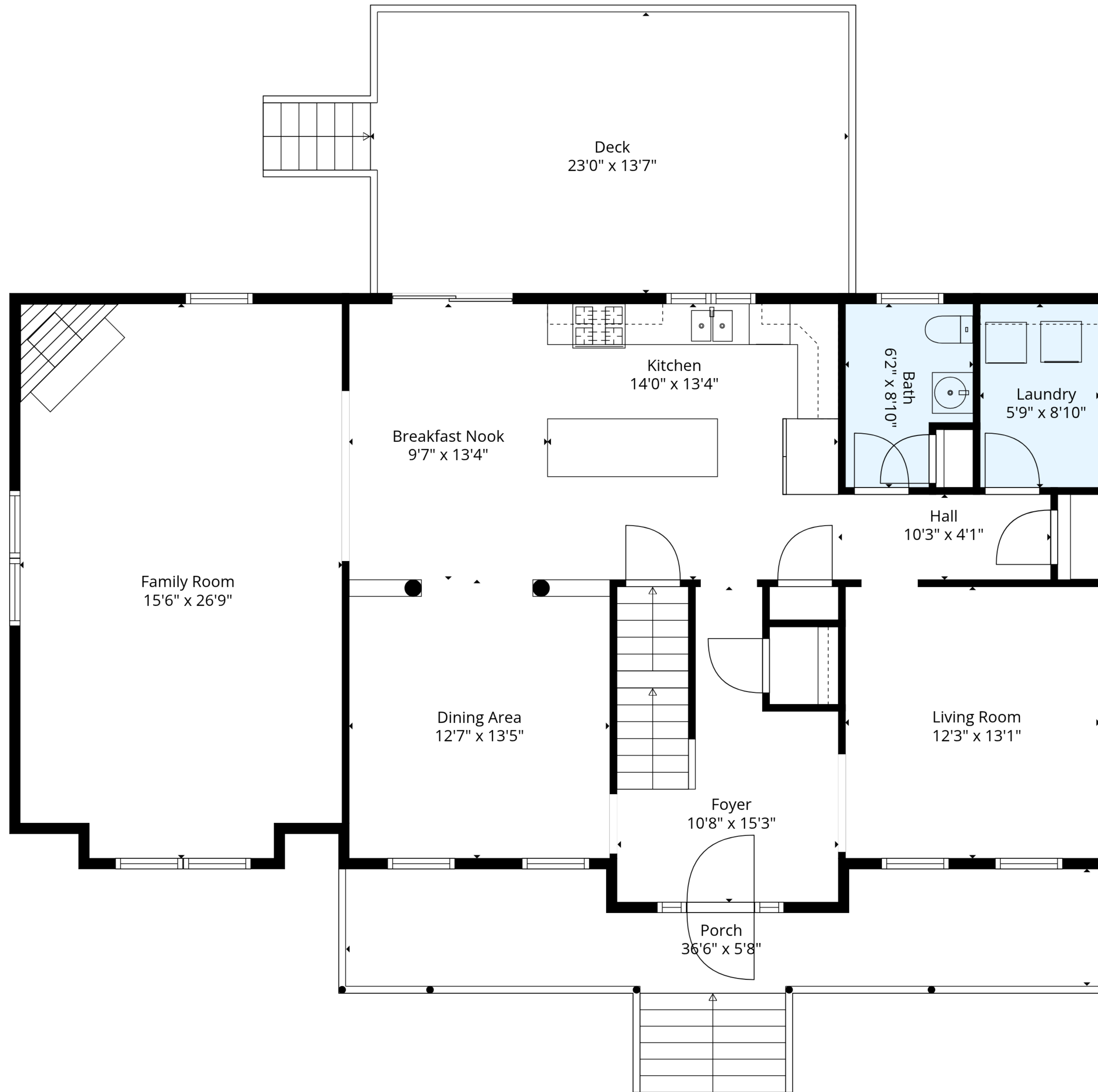
Garage
22'1" x 26'9"

Basement
30'6" x 28'10"

TOTAL: 2395 sq. ft

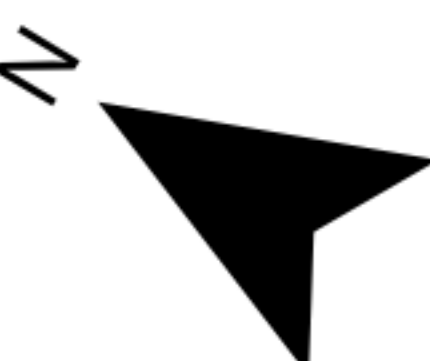
1ST FLOOR: 0 sq. ft, 2ND FLOOR: 1404 sq. ft, 3RD FLOOR: 991 sq. ft
EXCLUDED AREAS: BASEMENT: 828 sq. ft, GARAGE: 552 sq. ft, DECK: 346 sq. ft,
PORCH: 235 sq. ft, WALLS: 242 sq. ft

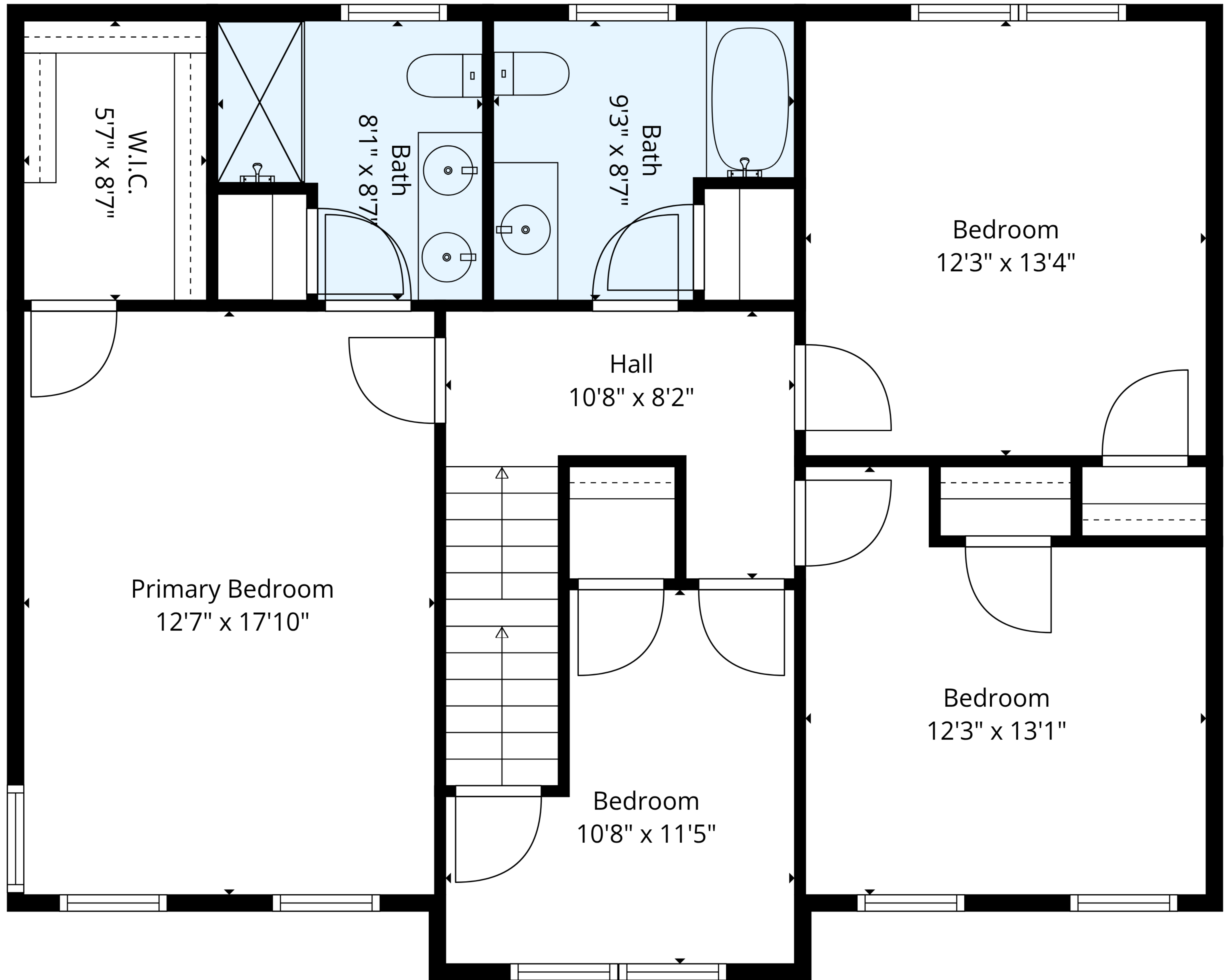




TOTAL: 2395 sq. ft

1ST FLOOR: 0 sq. ft, 2ND FLOOR: 1404 sq. ft, 3RD FLOOR: 991 sq. ft
 EXCLUDED AREAS: BASEMENT: 828 sq. ft, GARAGE: 552 sq. ft, DECK: 346 sq. ft,
 PORCH: 235 sq. ft, WALLS: 242 sq. ft

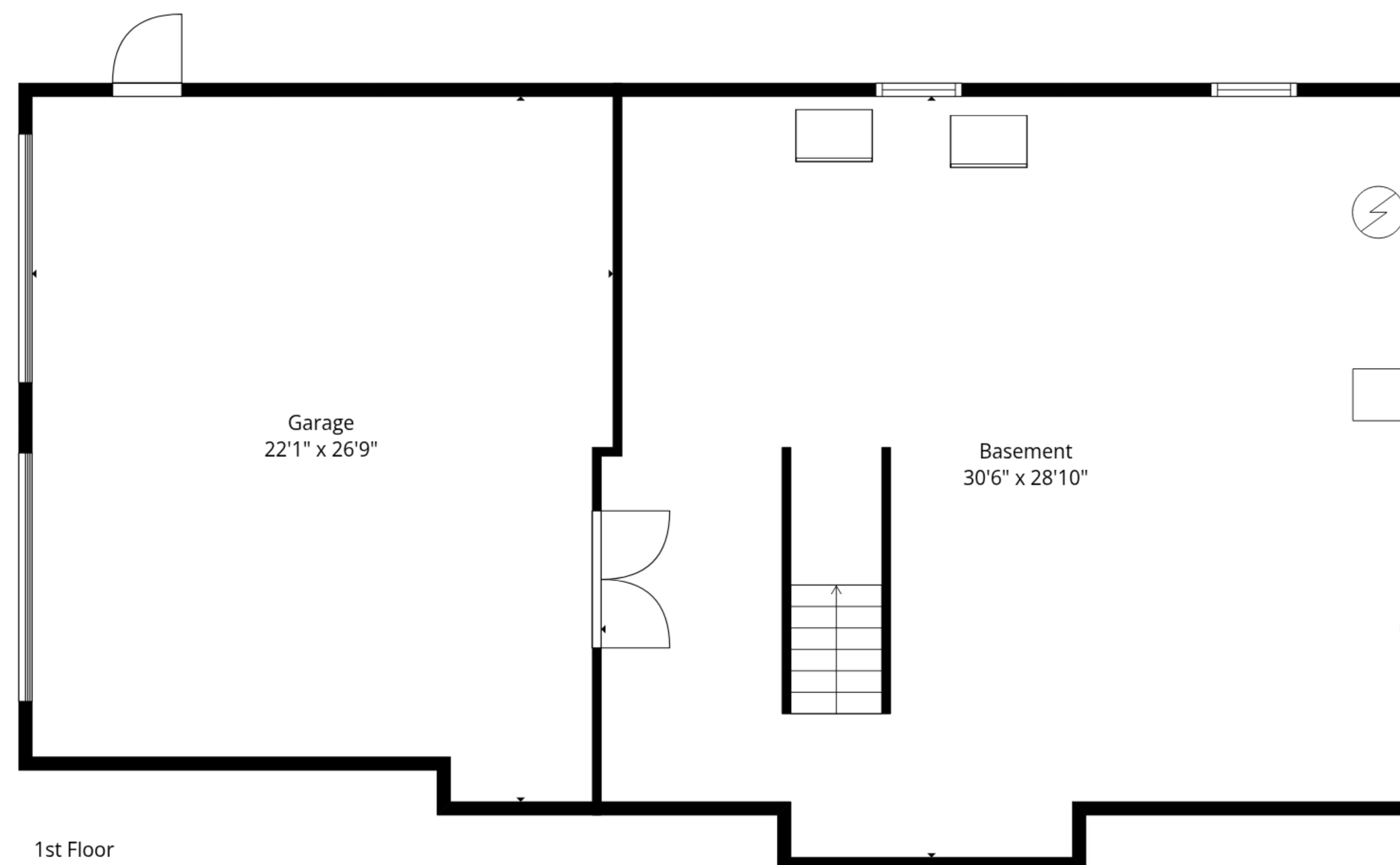
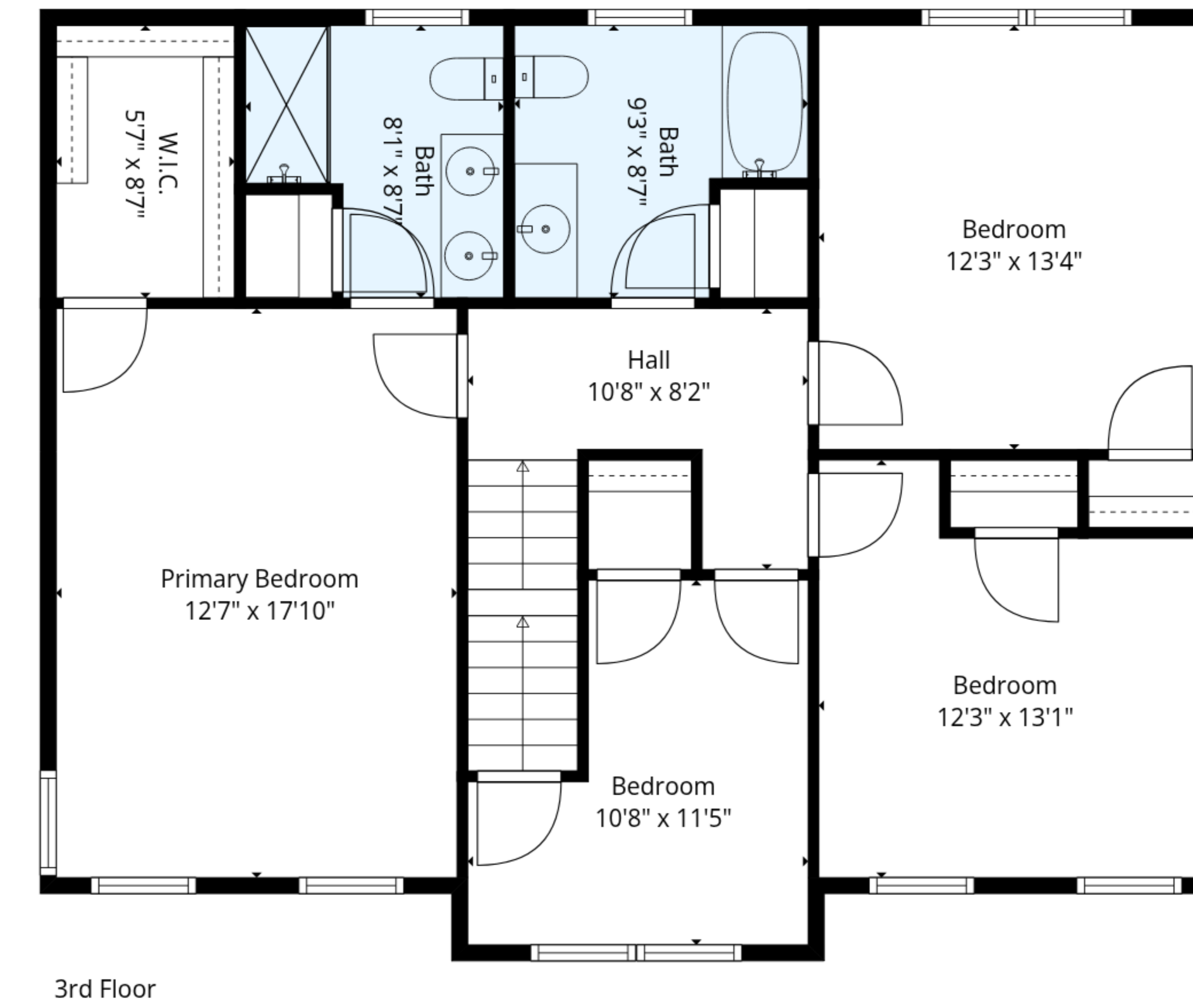
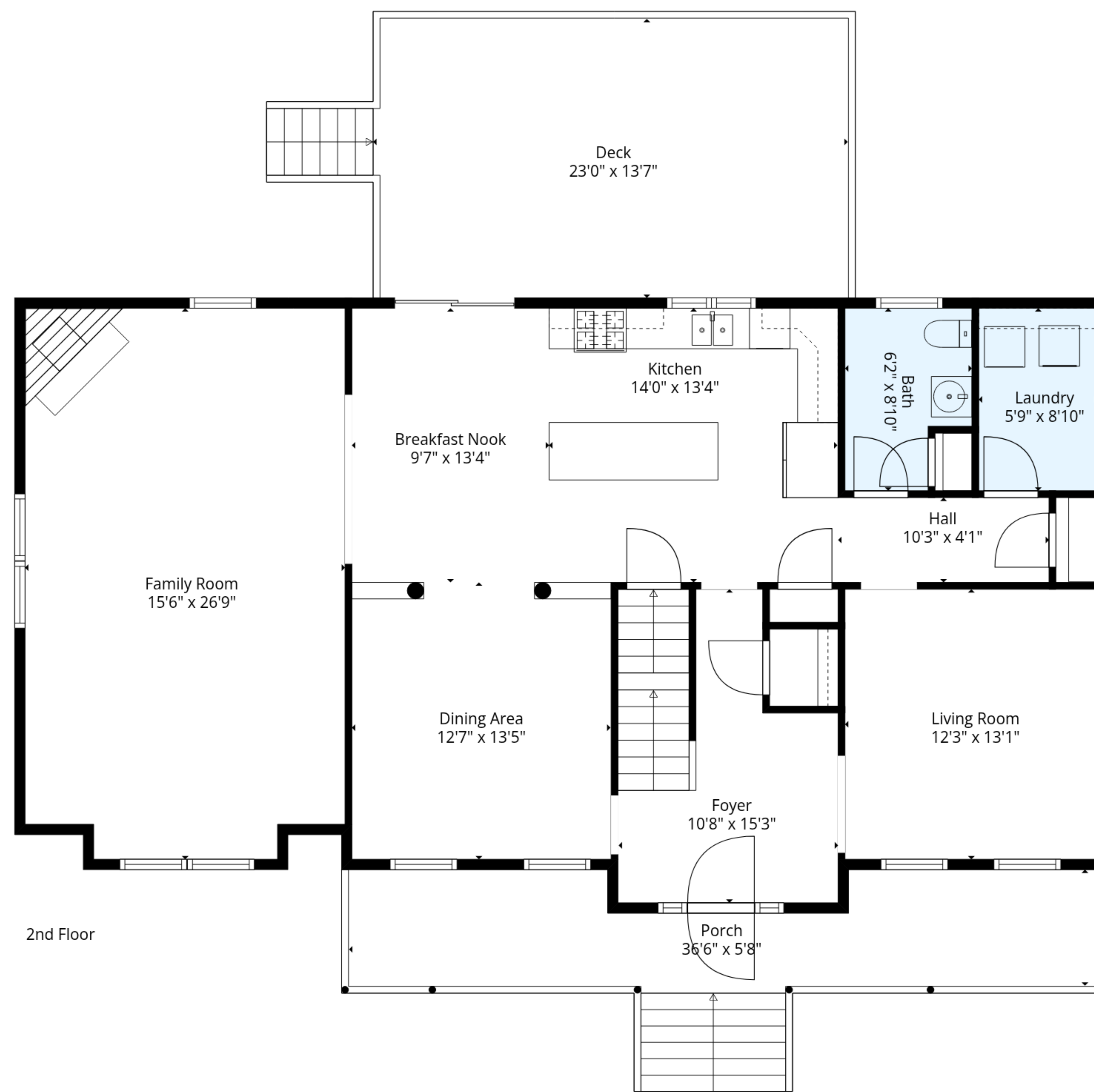




TOTAL: 2395 sq. ft

1ST FLOOR: 0 sq. ft, 2ND FLOOR: 1404 sq. ft, 3RD FLOOR: 991 sq. ft
 EXCLUDED AREAS: BASEMENT: 828 sq. ft, GARAGE: 552 sq. ft, DECK: 346 sq. ft,
 PORCH: 235 sq. ft, WALLS: 242 sq. ft





TOTAL: 2395 sq. ft

1ST FLOOR: 0 sq. ft, 2ND FLOOR: 1404 sq. ft, 3RD FLOOR: 991 sq. ft
 EXCLUDED AREAS: BASEMENT: 828 sq. ft, GARAGE: 552 sq. ft, DECK: 346 sq. ft,
 PORCH: 235 sq. ft, WALLS: 242 sq. ft

