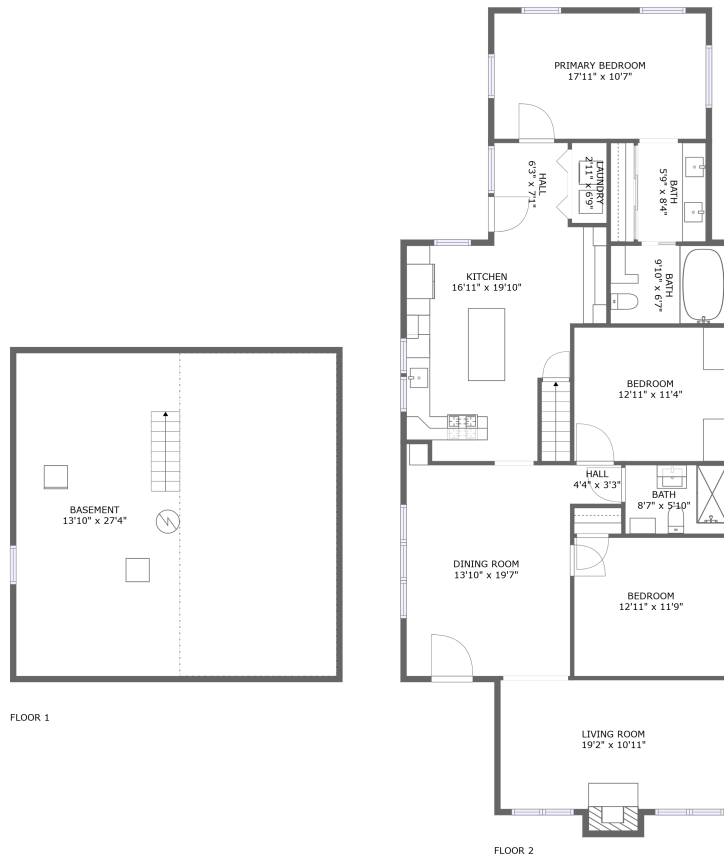



314 W 27th St, Richmond, VA, US



Property summary

 **0** Garages

 **3** Bedrooms

 **2** Bathrooms

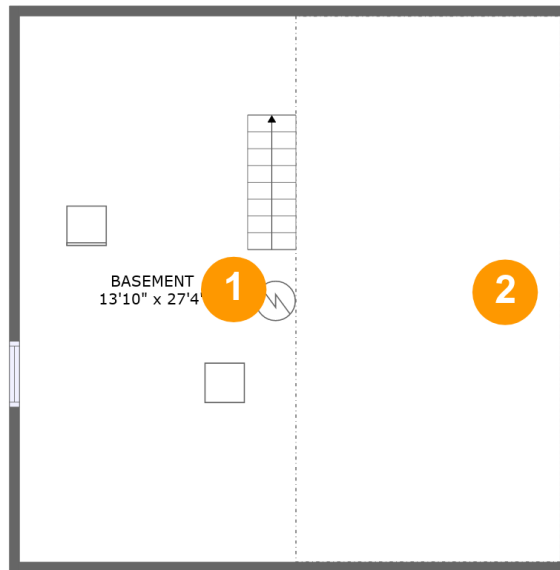
 **0** Half baths

 **2** Floors

 **1,650** Gross living area sqft

 **2,456** Total sqft

314 W 27th St, Richmond, VA, US



Room dimensions

Floor 1

Total sqft: 796 Living area: 0

#		Dimensions	sqft	Counted as living area
1	Basement	13'10" x 27'4"	378 sq. ft	No
2	Crawl Space	13'3" x 27'4"	362 sq. ft	No

314 W 27th St, Richmond, VA, US**Room dimensions**

Floor 2

Total sqft: 1660 Living area: 1650

#		Dimensions	sqft	Counted as living area
3	Laundry	2'11" x 6'9"	20 sq. ft	Yes
4	Living Room	19'2" x 10'11"	217 sq. ft	Yes
5	Primary Bedroom	17'11" x 10'7"	190 sq. ft	Yes
6	Hall	4'4" x 3'3"	14 sq. ft	Yes
7	Bath	8'7" x 5'10"	50 sq. ft	Yes
8	Bath	9'10" x 6'7"	65 sq. ft	Yes
9	Bath	5'9" x 8'4"	48 sq. ft	Yes
10	Bedroom	12'11" x 11'4"	146 sq. ft	Yes
11	Hall	6'3" x 7'1"	44 sq. ft	Yes
12	Bedroom	12'11" x 11'9"	151 sq. ft	Yes
13	Dining Room	13'10" x 19'7"	250 sq. ft	Yes

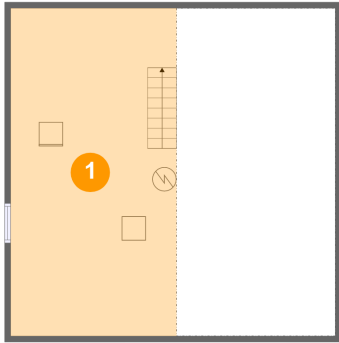
Scan captured on Mon, 17 Feb 2025 21:05:27 GMT

Information is calculated by Cubicasa technology deemed highly reliable but not guaranteed.

314 W 27th St, Richmond, VA, US

#		Dimensions	sqft	Counted as living area
14	Kitchen	16'11" x 19'10"	264 sq. ft	Yes

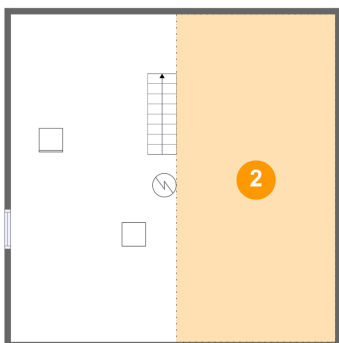
1 Floor 1 - Basement



Dimensions: 13'10" x 27'4"
Area: 378 sq. ft
Counted as living area: No

Heated: Yes
Finished: No
Enclosed: Yes
Contiguous: Yes
Permitted: Yes
Wet space: No
Addition: No
Conversion: No

2 Floor 1 - Crawl Space



Dimensions: 13'3" x 27'4"
Area: 362 sq. ft
Counted as living area: No

Heated: No
Finished: No
Enclosed: No
Contiguous: Yes
Permitted: No
Wet space: No
Addition: No
Conversion: No

314 W 27th St, Richmond, VA, US**3 Floor 2 - Laundry**

Dimensions: 2'11" x 6'9"
Area: 20 sq. ft
Counted as living area: Yes

Heated: Yes
Finished: Yes
Enclosed: Yes
Contiguous: Yes
Permitted: Yes
Wet space: No
Addition: No
Conversion: No

4 Floor 2 - Living Room

Dimensions: 19'2" x 10'11"
Area: 217 sq. ft
Counted as living area: Yes

Heated: Yes
Finished: Yes
Enclosed: Yes
Contiguous: Yes
Permitted: Yes
Wet space: No
Addition: No
Conversion: No

5 Floor 2 - Primary Bedroom

Dimensions: 17'11" x 10'7"
Area: 190 sq. ft
Counted as living area: Yes

Heated: Yes
Finished: Yes
Enclosed: Yes
Contiguous: Yes
Permitted: Yes
Wet space: No
Addition: No
Conversion: No

314 W 27th St, Richmond, VA, US**6 Floor 2 - Hall**

Dimensions: 4'4" x 3'3"
Area: 14 sq. ft
Counted as living area: Yes

Heated: Yes
Finished: Yes
Enclosed: Yes
Contiguous: Yes
Permitted: Yes
Wet space: No
Addition: No
Conversion: No

7 Floor 2 - Bath

Dimensions: 8'7" x 5'10"
Area: 50 sq. ft
Counted as living area: Yes

Heated: Yes
Finished: Yes
Enclosed: Yes
Contiguous: Yes
Permitted: Yes
Wet space: Yes
Addition: No
Conversion: No

8 Floor 2 - Bath

Dimensions: 9'10" x 6'7"
Area: 65 sq. ft
Counted as living area: Yes

Heated: Yes
Finished: Yes
Enclosed: Yes
Contiguous: Yes
Permitted: Yes
Wet space: Yes
Addition: No
Conversion: No

9 Floor 2 - Bath



Dimensions: 5'9" x 8'4"
Area: 48 sq. ft
Counted as living area: Yes

Heated: Yes
Finished: Yes
Enclosed: Yes
Contiguous: Yes
Permitted: Yes
Wet space: Yes
Addition: No
Conversion: No

10 Floor 2 - Bedroom



Dimensions: 12'11" x 11'4"
Area: 146 sq. ft
Counted as living area: Yes

Heated: Yes
Finished: Yes
Enclosed: Yes
Contiguous: Yes
Permitted: Yes
Wet space: No
Addition: No
Conversion: No

11 Floor 2 - Hall



Dimensions: 6'3" x 7'1"
Area: 44 sq. ft
Counted as living area: Yes

Heated: Yes
Finished: Yes
Enclosed: Yes
Contiguous: Yes
Permitted: Yes
Wet space: No
Addition: No
Conversion: No

314 W 27th St, Richmond, VA, US**12 Floor 2 - Bedroom**

Dimensions: 12'11" x 11'9"
Area: 151 sq. ft
Counted as living area: Yes

Heated: Yes
Finished: Yes
Enclosed: Yes
Contiguous: Yes
Permitted: Yes
Wet space: No
Addition: No
Conversion: No

13 Floor 2 - Dining Room

Dimensions: 13'10" x 19'7"
Area: 250 sq. ft
Counted as living area: Yes

Heated: Yes
Finished: Yes
Enclosed: Yes
Contiguous: Yes
Permitted: Yes
Wet space: No
Addition: No
Conversion: No

14 Floor 2 - Kitchen

Dimensions: 16'11" x 19'10"
Area: 264 sq. ft
Counted as living area: Yes

Heated: Yes
Finished: Yes
Enclosed: Yes
Contiguous: Yes
Permitted: Yes
Wet space: No
Addition: No
Conversion: No