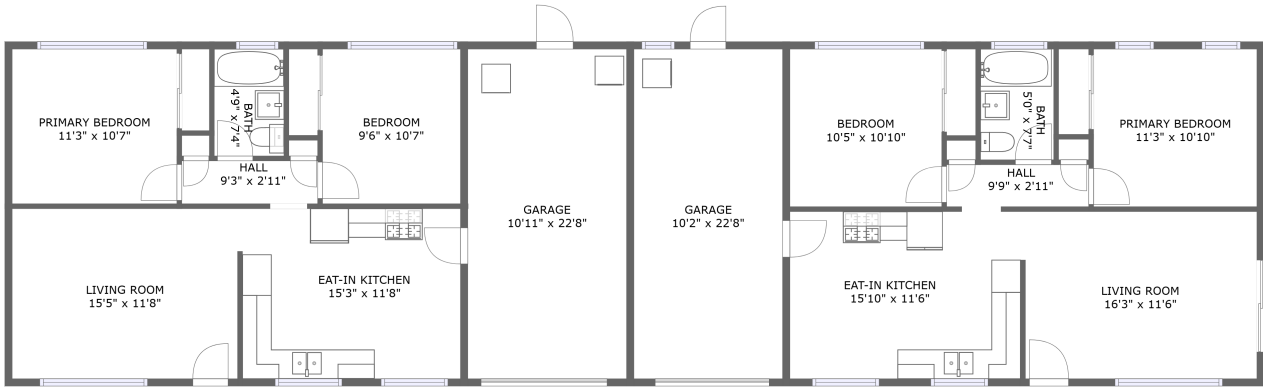


410 North 6th Street, Grover Beach, San Luis Obispo County, California, United States, 93433




FLOOR 1

Property Summary

 **2** garages

 **4** bedrooms

 **2** bathrooms

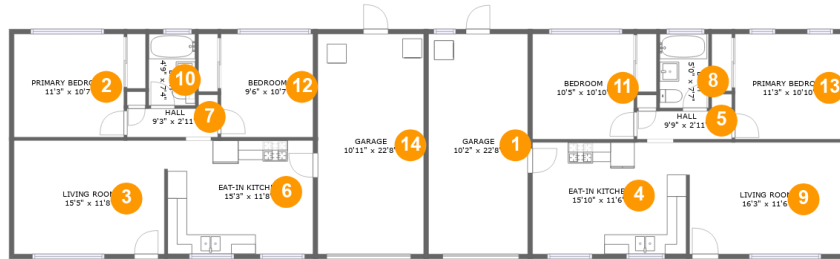
 **0** half baths

 **1** floors

 **1,533** Gross Living Area sqft

 **2,044** total sqft

410 North 6th Street, Grover Beach, San Luis Obispo County, California, United States, 93433



Room Dimensions

Floor 1

Total sqft: 2044

Living area: 1533

#	Room name	Dimensions	Area (sqft)	Counted as Living Area
1	Garage	10'2" x 22'8"	231 sq. ft	No
2	Primary Bedroom	11'3" x 10'7"	120 sq. ft	Yes
3	Living Room	15'5" x 11'8"	181 sq. ft	Yes
4	Eat-in Kitchen	15'10" x 11'6"	182 sq. ft	Yes
5	Hall	9'9" x 2'11"	28 sq. ft	Yes
6	Eat-in Kitchen	15'3" x 11'8"	176 sq. ft	Yes
7	Hall	9'3" x 2'11"	27 sq. ft	Yes
8	Bath	5'0" x 7'7"	38 sq. ft	Yes
9	Living Room	16'3" x 11'6"	184 sq. ft	Yes
10	Bath	4'9" x 7'4"	35 sq. ft	Yes
11	Bedroom	10'5" x 10'10"	113 sq. ft	Yes

Scan captured on Wed, 23 Oct 2024 21:35:56 GMT

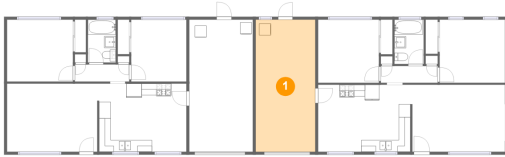
Information is calculated by CubiCasa technology; deemed highly reliable but not guaranteed.

**410 North 6th Street, Grover Beach, San Luis
Obispo County, California, United States, 93433**

#	Room name	Dimensions	Area (sqft)	Counted as Living Area
12	Bedroom	9'6" x 10'7"	101 sq. ft	Yes
13	Primary Bedroom	11'3" x 10'10"	121 sq. ft	Yes
14	Garage	10'11" x 22'8"	247 sq. ft	No

410 North 6th Street, Grover Beach, San Luis Obispo County, California, United States, 93433

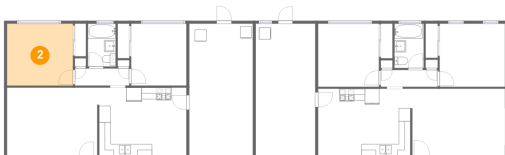
1 Floor 1 - Garage



Dimensions: 10'2" x 22'8"
Area: 231 sq. ft
Counted as Living Area: No

Heated: No
Finished: No
Enclosed: Yes
Contiguous: Yes
Permitted: Yes
Wet Space: No
Addition: No
Conversion: No

2 Floor 1 - Primary Bedroom



Dimensions: 11'3" x 10'7"
Area: 120 sq. ft
Counted as Living Area:
Yes

Heated: Yes
Finished: Yes
Enclosed: Yes
Contiguous:
Yes
Permitted: Yes
Wet Space: No
Addition: No
Conversion: No

410 North 6th Street, Grover Beach, San Luis Obispo County, California, United States, 93433

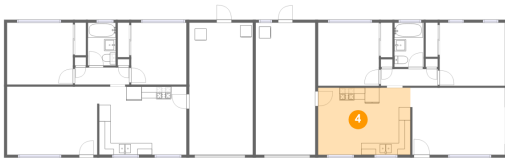
3 Floor 1 - Living Room



Dimensions: 15'5" x 11'8"
Area: 181 sq. ft
Counted as Living Area:
Yes

Heated: Yes
Finished: Yes
Enclosed: Yes
Contiguous:
Yes
Permitted: Yes
Wet Space: No
Addition: No
Conversion: No

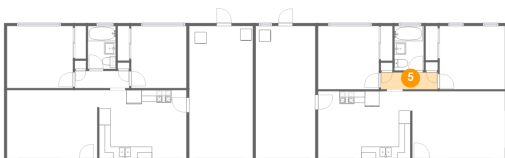
4 Floor 1 - Eat-in Kitchen



Dimensions: 15'10" x 11'6"
Area: 182 sq. ft
Counted as Living Area:
Yes

Heated: Yes
Finished: Yes
Enclosed: Yes
Contiguous:
Yes
Permitted: Yes
Wet Space: No
Addition: No
Conversion: No

5 Floor 1 - Hall



Dimensions: 9'9" x 2'11"
Area: 28 sq. ft
Counted as Living Area:
Yes

Heated: Yes
Finished: Yes
Enclosed: Yes
Contiguous:
Yes
Permitted: Yes
Wet Space: No
Addition: No
Conversion: No

410 North 6th Street, Grover Beach, San Luis Obispo County, California, United States, 93433

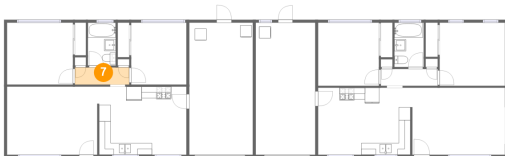
6 Floor 1 - Eat-in Kitchen



Dimensions: 15'3" x 11'8"
Area: 176 sq. ft
Counted as Living Area:
Yes

Heated: Yes
Finished: Yes
Enclosed: Yes
Contiguous:
Yes
Permitted: Yes
Wet Space: No
Addition: No
Conversion: No

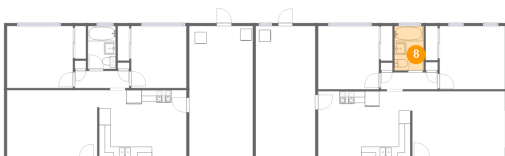
7 Floor 1 - Hall



Dimensions: 9'3" x 2'11"
Area: 27 sq. ft
Counted as Living Area:
Yes

Heated: Yes
Finished: Yes
Enclosed: Yes
Contiguous:
Yes
Permitted: Yes
Wet Space: No
Addition: No
Conversion: No

8 Floor 1 - Bath



Dimensions: 5'0" x 7'7"
Area: 38 sq. ft
Counted as Living Area:
Yes

Heated: Yes
Finished: Yes
Enclosed: Yes
Contiguous:
Yes
Permitted: Yes
Wet Space: Yes
Addition: No
Conversion: No

410 North 6th Street, Grover Beach, San Luis Obispo County, California, United States, 93433

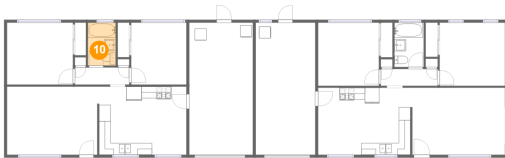
9 Floor 1 - Living Room



Dimensions: 16'3" x 11'6"
Area: 184 sq. ft
Counted as Living Area:
Yes

Heated: Yes
Finished: Yes
Enclosed: Yes
Contiguous:
Yes
Permitted: Yes
Wet Space: No
Addition: No
Conversion: No

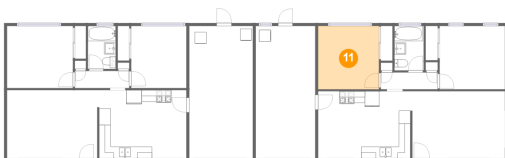
10 Floor 1 - Bath



Dimensions: 4'9" x 7'4"
Area: 35 sq. ft
Counted as Living Area:
Yes

Heated: Yes
Finished: Yes
Enclosed: Yes
Contiguous:
Yes
Permitted: Yes
Wet Space: Yes
Addition: No
Conversion: No

11 Floor 1 - Bedroom



Dimensions: 10'5" x 10'10"
Area: 113 sq. ft
Counted as Living Area:
Yes

Heated: Yes
Finished: Yes
Enclosed: Yes
Contiguous:
Yes
Permitted: Yes
Wet Space: No
Addition: No
Conversion: No

410 North 6th Street, Grover Beach, San Luis Obispo County, California, United States, 93433

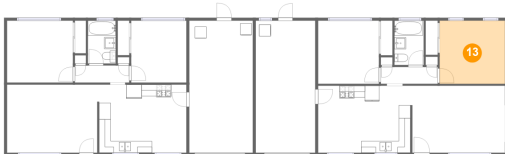
12 Floor 1 - Bedroom



Dimensions: 9'6" x 10'7"
Area: 101 sq. ft
Counted as Living Area:
Yes

Heated: Yes
Finished: Yes
Enclosed: Yes
Contiguous:
Yes
Permitted: Yes
Wet Space: No
Addition: No
Conversion: No

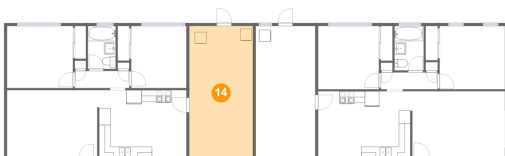
13 Floor 1 - Primary Bedroom



Dimensions: 11'3" x 10'10"
Area: 121 sq. ft
Counted as Living Area:
Yes

Heated: Yes
Finished: Yes
Enclosed: Yes
Contiguous:
Yes
Permitted: Yes
Wet Space: No
Addition: No
Conversion: No

14 Floor 1 - Garage



Dimensions: 10'11" x 22'8"
Area: 247 sq. ft
Counted as Living Area: No

Heated: No
Finished: No
Enclosed: Yes
Contiguous: Yes
Permitted: Yes
Wet Space: No
Addition: No
Conversion: No