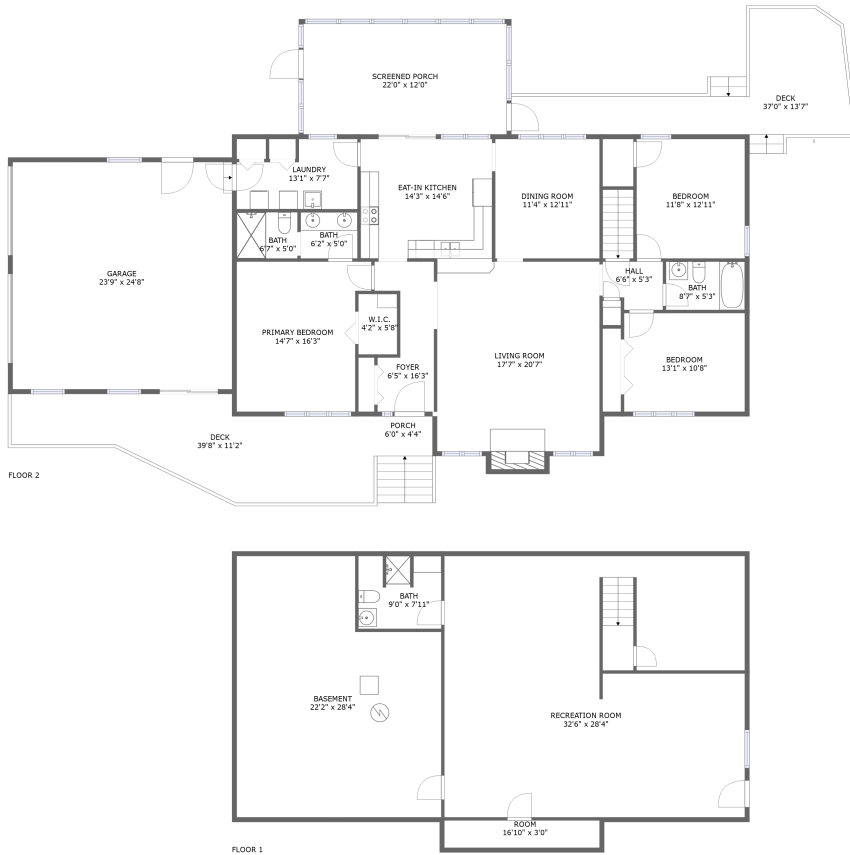


6847 Columbine Lane, Summerdean Gardens, Hollins, Roanoke County, Virginia, United States,

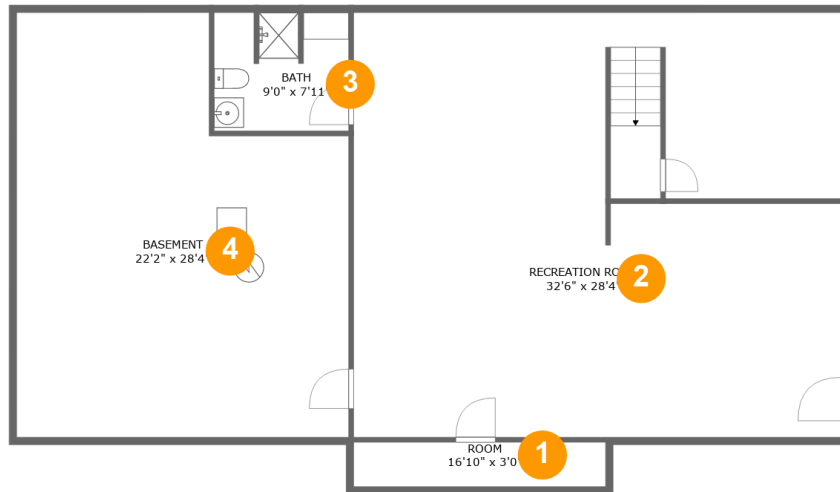


Property Summary

1 garages **3** bedrooms **3** bathrooms **0** half baths

2 floors **2,913** Gross Living Area sqft **5,039** total sqft

6847 Columbine Lane, Summerdean Gardens, Hollins, Roanoke County, Virginia, United States,



Room Dimensions

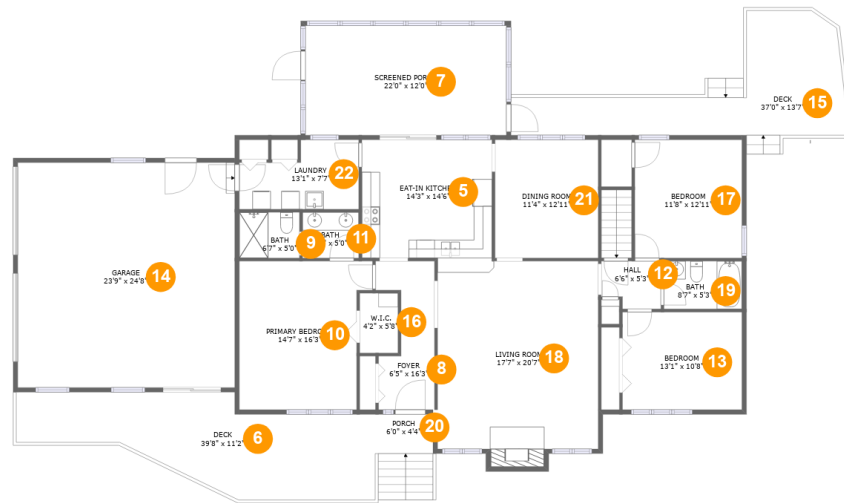
Floor 1

Total sqft: 1704

Living area: 1120

#	Room name	Dimensions	Area (sqft)	Counted as Living Area
1	Room	16'10" x 3'0"	50 sq. ft	Yes
2	Recreation Room	32'6" x 28'4"	910 sq. ft	Yes
3	Bath	9'0" x 7'11"	69 sq. ft	Yes
4	Basement	22'2" x 28'4"	551 sq. ft	No

6847 Columbine Lane, Summerdean Gardens, Hollins, Roanoke County, Virginia, United States,



Room Dimensions

Floor 2

Total sqft: 3335

Living area: 1793

#	Room name	Dimensions	Area (sqft)	Counted as Living Area
5	Eat-in Kitchen	14'3" x 14'6"	194 sq. ft	Yes
6	Deck	39'8" x 11'2"	317 sq. ft	No
7	Screened Porch	22'0" x 12'0"	264 sq. ft	No
8	Foyer	6'5" x 16'3"	83 sq. ft	Yes
9	Bath	6'7" x 5'0"	33 sq. ft	Yes
10	Primary Bedroom	14'7" x 16'3"	215 sq. ft	Yes
11	Bath	6'2" x 5'0"	31 sq. ft	Yes
12	Hall	6'6" x 5'3"	31 sq. ft	Yes
13	Bedroom	13'1" x 10'8"	140 sq. ft	Yes
14	Garage	23'9" x 24'8"	586 sq. ft	No
15	Deck	37'0" x 13'7"	246 sq. ft	No

Scan captured on Thu, 18 Jul 2024 17:58:16 GMT

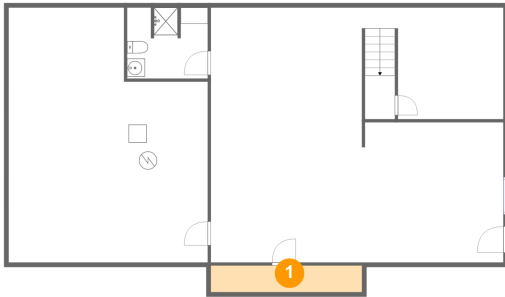
Information is calculated by CubiCasa technology; deemed highly reliable but not guaranteed.

**6847 Columbine Lane, Summerdean Gardens,
Hollins, Roanoke County, Virginia, United States,**

#	Room name	Dimensions	Area (sqft)	Counted as Living Area
16	W.i.c.	4'2" x 5'8"	27 sq. ft	Yes
17	Bedroom	11'8" x 12'11"	152 sq. ft	Yes
18	Living Room	17'7" x 20'7"	366 sq. ft	Yes
19	Bath	8'7" x 5'3"	45 sq. ft	Yes
20	Porch	6'0" x 4'4"	56 sq. ft	No
21	Dining Room	11'4" x 12'11"	146 sq. ft	Yes
22	Laundry	13'1" x 7'7"	83 sq. ft	Yes

6847 Columbine Lane, Summerdean Gardens, Hollins, Roanoke County, Virginia, United States,

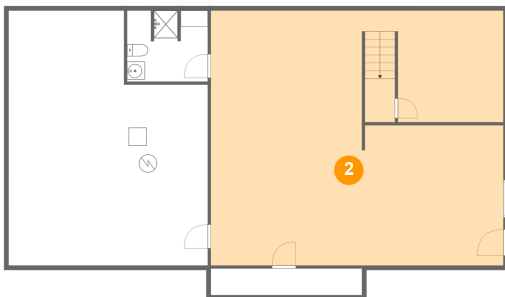
1 Floor 1 - Room



Dimensions: 16'10" x 3'0"
Area: 50 sq. ft
Counted as Living Area:
Yes

Heated: Yes
Finished: Yes
Enclosed: Yes
Contiguous:
Yes
Permitted: Yes
Wet Space: No
Addition: No
Conversion: No

2 Floor 1 - Recreation Room

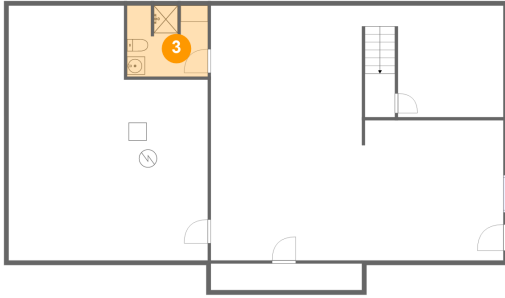


Dimensions: 32'6" x 28'4"
Area: 910 sq. ft
Counted as Living Area:
Yes

Heated: Yes
Finished: Yes
Enclosed: Yes
Contiguous:
Yes
Permitted: Yes
Wet Space: No
Addition: No
Conversion: No

6847 Columbine Lane, Summerdean Gardens, Hollins, Roanoke County, Virginia, United States,

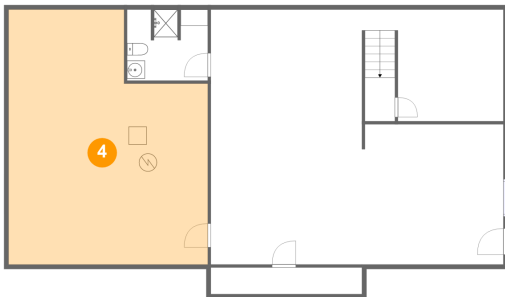
3 Floor 1 - Bath



Dimensions: 9'0" x 7'11"
Area: 69 sq. ft
Counted as Living Area:
Yes

Heated: Yes
Finished: Yes
Enclosed: Yes
Contiguous:
Yes
Permitted: Yes
Wet Space: Yes
Addition: No
Conversion: No

4 Floor 1 - Basement



Dimensions: 22'2" x 28'4"
Area: 551 sq. ft
Counted as Living Area: No

Heated: No
Finished: No
Enclosed: Yes
Contiguous: Yes
Permitted: Yes
Wet Space: No
Addition: No
Conversion: No

5 Floor 2 - Eat-in Kitchen

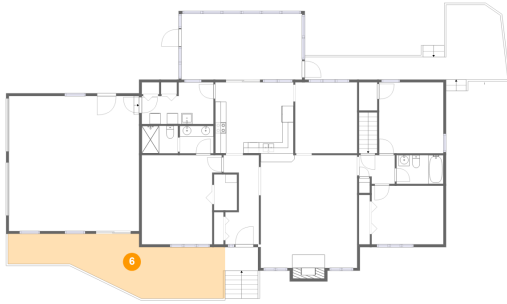


Dimensions: 14'3" x 14'6"
Area: 194 sq. ft
Counted as Living Area:
Yes

Heated: Yes
Finished: Yes
Enclosed: Yes
Contiguous:
Yes
Permitted: Yes
Wet Space: No
Addition: No
Conversion: No

6847 Columbine Lane, Summerdean Gardens, Hollins, Roanoke County, Virginia, United States,

6 Floor 2 - Deck



Dimensions: 39'8" x 11'2"
Area: 317 sq. ft
Counted as Living Area: No

Heated: No
Finished: Yes
Enclosed: No
Contiguous: Yes
Permitted: Yes
Wet Space: No
Addition: No
Conversion: No

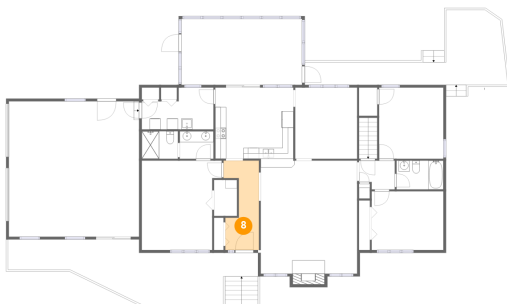
7 Floor 2 - Screened Porch



Dimensions: 22'0" x 12'0"
Area: 264 sq. ft
Counted as Living Area: No

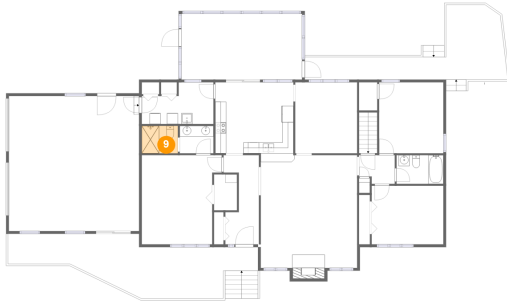
Heated: No
Finished: Yes
Enclosed: No
Contiguous: Yes
Permitted: Yes
Wet Space: No
Addition: No
Conversion: No

8 Floor 2 - Foyer



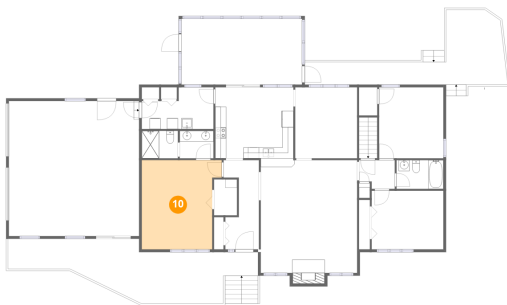
Dimensions: 6'5" x 16'3"
Area: 83 sq. ft
Counted as Living Area: Yes

Heated: Yes
Finished: Yes
Enclosed: Yes
Contiguous: Yes
Permitted: Yes
Wet Space: No
Addition: No
Conversion: No

**6847 Columbine Lane, Summerdean Gardens,
Hollins, Roanoke County, Virginia, United States,****9 Floor 2 - Bath**

Dimensions: 6'7" x 5'0"
Area: 33 sq. ft
Counted as Living Area:
Yes

Heated: Yes
Finished: Yes
Enclosed: Yes
Contiguous:
Yes
Permitted: Yes
Wet Space: Yes
Addition: No
Conversion: No

10 Floor 2 - Primary Bedroom

Dimensions: 14'7" x 16'3"
Area: 215 sq. ft
Counted as Living Area:
Yes

Heated: Yes
Finished: Yes
Enclosed: Yes
Contiguous:
Yes
Permitted: Yes
Wet Space: No
Addition: No
Conversion: No

11 Floor 2 - Bath

Dimensions: 6'2" x 5'0"
Area: 31 sq. ft
Counted as Living Area:
Yes

Heated: Yes
Finished: Yes
Enclosed: Yes
Contiguous:
Yes
Permitted: Yes
Wet Space: Yes
Addition: No
Conversion: No

6847 Columbine Lane, Summerdean Gardens, Hollins, Roanoke County, Virginia, United States,

12 Floor 2 - Hall



Dimensions: 6'6" x 5'3"
Area: 31 sq. ft
Counted as Living Area:
Yes

Heated: Yes
Finished: Yes
Enclosed: Yes
Contiguous:
Yes
Permitted: Yes
Wet Space: No
Addition: No
Conversion: No

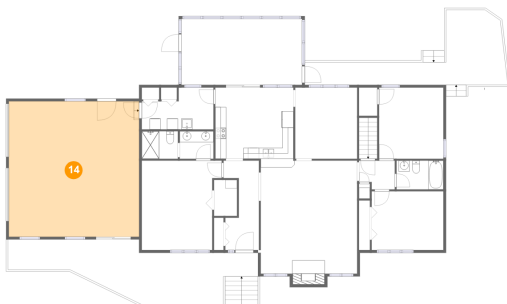
13 Floor 2 - Bedroom



Dimensions: 13'1" x 10'8"
Area: 140 sq. ft
Counted as Living Area:
Yes

Heated: Yes
Finished: Yes
Enclosed: Yes
Contiguous:
Yes
Permitted: Yes
Wet Space: No
Addition: No
Conversion: No

14 Floor 2 - Garage

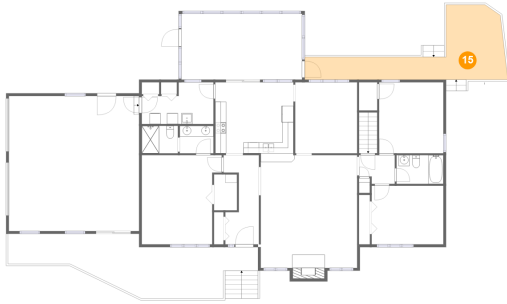


Dimensions: 23'9" x 24'8"
Area: 586 sq. ft
Counted as Living Area: No

Heated: No
Finished: No
Enclosed: Yes
Contiguous: Yes
Permitted: Yes
Wet Space: No
Addition: No
Conversion: No

6847 Columbine Lane, Summerdean Gardens, Hollins, Roanoke County, Virginia, United States,

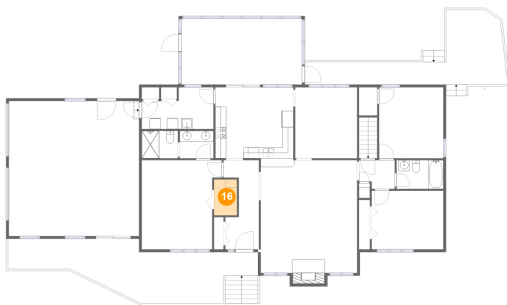
15 Floor 2 - Deck



Dimensions: 37'0" x 13'7"
Area: 246 sq. ft
Counted as Living Area: No

Heated: No
Finished: Yes
Enclosed: No
Contiguous: Yes
Permitted: Yes
Wet Space: No
Addition: No
Conversion: No

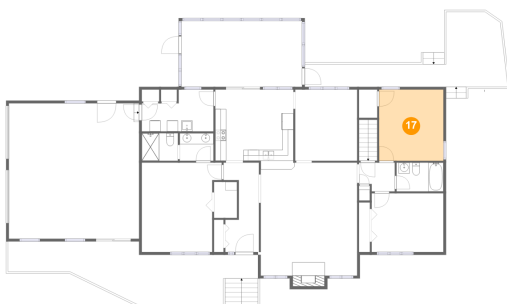
16 Floor 2 - W.i.c.



Dimensions: 4'2" x 5'8"
Area: 27 sq. ft
Counted as Living Area:
Yes

Heated: Yes
Finished: Yes
Enclosed: Yes
Contiguous:
Yes
Permitted: Yes
Wet Space: No
Addition: No
Conversion: No

17 Floor 2 - Bedroom

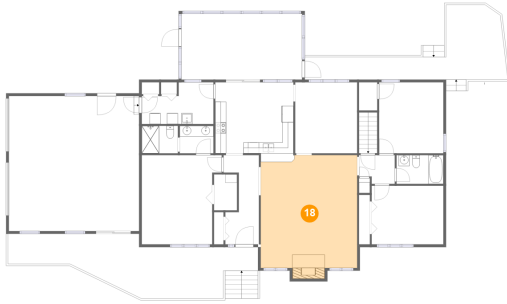


Dimensions: 11'8" x 12'11"
Area: 152 sq. ft
Counted as Living Area:
Yes

Heated: Yes
Finished: Yes
Enclosed: Yes
Contiguous:
Yes
Permitted: Yes
Wet Space: No
Addition: No
Conversion: No

6847 Columbine Lane, Summerdean Gardens, Hollins, Roanoke County, Virginia, United States,

18 Floor 2 - Living Room



Dimensions: 17'7" x 20'7"
Area: 366 sq. ft
Counted as Living Area:
Yes

Heated: Yes
Finished: Yes
Enclosed: Yes
Contiguous:
Yes
Permitted: Yes
Wet Space: No
Addition: No
Conversion: No

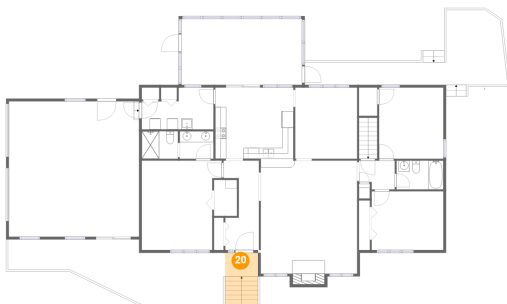
19 Floor 2 - Bath



Dimensions: 8'7" x 5'3"
Area: 45 sq. ft
Counted as Living Area:
Yes

Heated: Yes
Finished: Yes
Enclosed: Yes
Contiguous:
Yes
Permitted: Yes
Wet Space: Yes
Addition: No
Conversion: No

20 Floor 2 - Porch

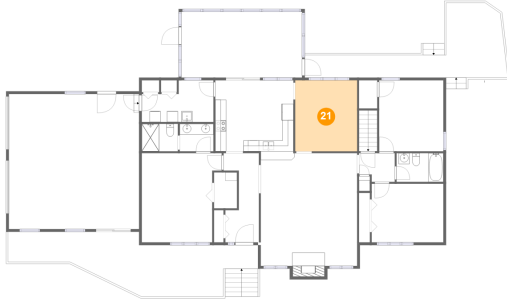


Dimensions: 6'0" x 4'4"
Area: 56 sq. ft
Counted as Living Area: No

Heated: No
Finished: Yes
Enclosed: No
Contiguous: Yes
Permitted: Yes
Wet Space: No
Addition: No
Conversion: No

6847 Columbine Lane, Summerdean Gardens, Hollins, Roanoke County, Virginia, United States,

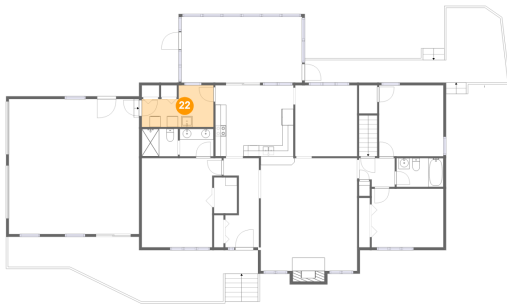
21 Floor 2 - Dining Room



Dimensions: 11'4" x 12'11"
Area: 146 sq. ft
Counted as Living Area:
Yes

Heated: Yes
Finished: Yes
Enclosed: Yes
Contiguous:
Yes
Permitted: Yes
Wet Space: No
Addition: No
Conversion: No

22 Floor 2 - Laundry



Dimensions: 13'1" x 7'7"
Area: 83 sq. ft
Counted as Living Area:
Yes

Heated: Yes
Finished: Yes
Enclosed: Yes
Contiguous:
Yes
Permitted: Yes
Wet Space: No
Addition: No
Conversion: No