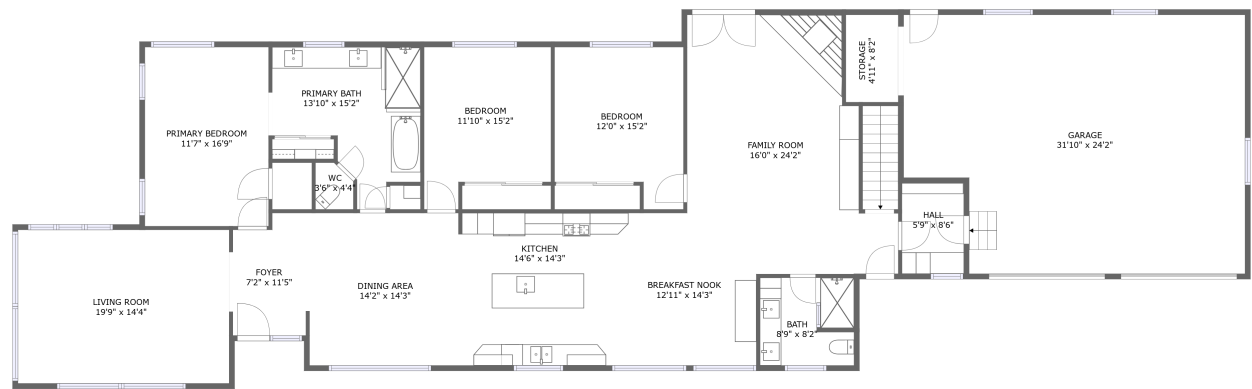
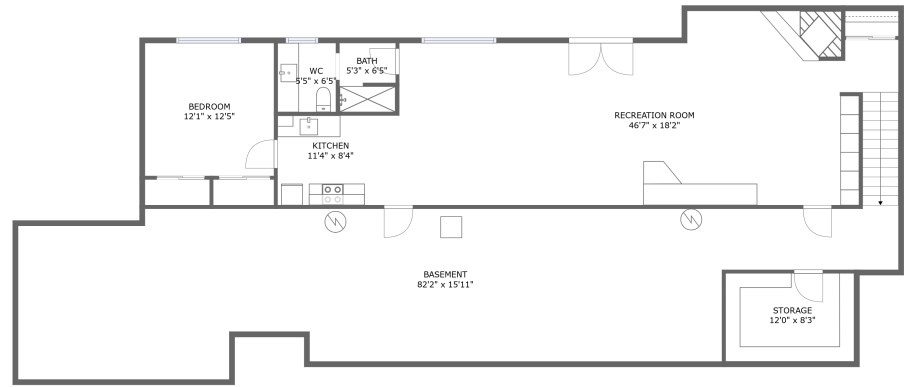


Home report

41390 Oretown Road, Cloverdale, Tillamook County, Oregon,
United States, 97112



FLOOR 2



FLOOR 1

Property summary

 **1** Garages

 **4** Bedrooms

 **3** Bathrooms

 **0** Half baths

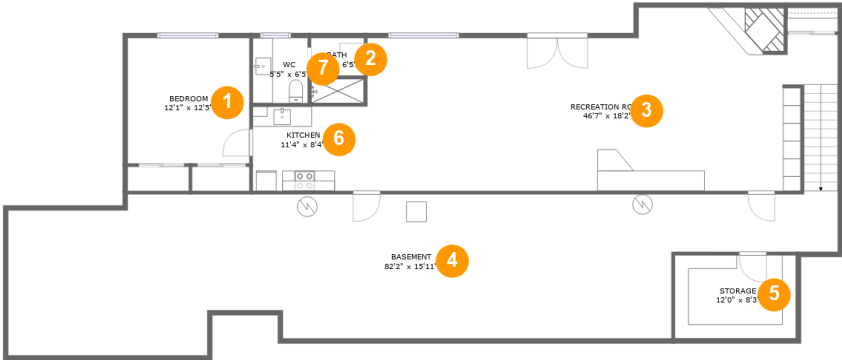
 **2** Floors

 **3,605** Gross living area sqft

 **5,605** Total sqft

Home report

41390 Oretown Road, Cloverdale, Tillamook County, Oregon,
United States, 97112



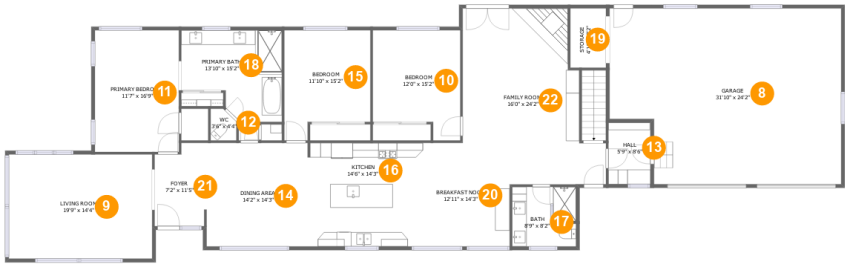
Room dimensions

Floor 1 Total sqft: 2395 Living area: 1199

#		Dimensions	sqft	Counted as living area
1	Bedroom	12'1" x 12'5"	149 sq. ft	Yes
2	Bath	5'3" x 6'5"	33 sq. ft	Yes
3	Recreation Room	46'7" x 18'2"	744 sq. ft	Yes
4	Basement	82'2" x 15'11"	1025 sq. ft	No
5	Storage	12'0" x 8'3"	99 sq. ft	No
6	Kitchen	11'4" x 8'4"	95 sq. ft	Yes
7	WC	5'5" x 6'5"	35 sq. ft	Yes

Home report

41390 Oretown Road, Cloverdale, Tillamook County, Oregon,
United States, 97112



Room dimensions

Floor 2 Total sqft: 3210 Living area: 2406

#		Dimensions	sqft	Counted as living area
8	Garage	31'10" x 24'2"	715 sq. ft	No
9	Living Room	19'9" x 14'4"	283 sq. ft	Yes
10	Bedroom	12'0" x 15'2"	161 sq. ft	Yes
11	Primary Bedroom	11'7" x 16'9"	193 sq. ft	Yes
12	WC	3'6" x 4'4"	14 sq. ft	Yes
13	Hall	5'9" x 8'6"	49 sq. ft	Yes
14	Dining Area	14'2" x 14'3"	202 sq. ft	Yes
15	Bedroom	11'10" x 15'2"	157 sq. ft	Yes
16	Kitchen	14'6" x 14'3"	207 sq. ft	Yes
17	Bath	8'9" x 8'2"	70 sq. ft	Yes
18	Primary Bath	13'10" x 15'2"	153 sq. ft	Yes

Home report

41390 Oretown Road, Cloverdale, Tillamook County, Oregon,
United States, 97112

#		Dimensions	sqft	Counted as living area
19	Storage	4'11" x 8'2"	40 sq. ft	No
20	Breakfast Nook	12'11" x 14'3"	184 sq. ft	Yes
21	Foyer	7'2" x 11'5"	75 sq. ft	Yes
22	Family Room	16'0" x 24'2"	359 sq. ft	Yes

41390 Oretown Road, Cloverdale, Tillamook County, Oregon,
United States, 97112

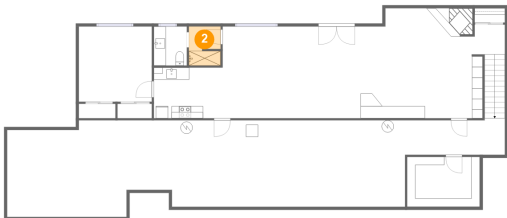
1 Floor 1 - Bedroom



Dimensions: 12'1" x 12'5"
Area: 149 sq. ft
Counted as living area: Yes

Heated: Yes
Finished: Yes
Enclosed: Yes
Contiguous: Yes
Permitted: Yes
Wet space: No
Addition: No
Conversion: No

2 Floor 1 - Bath

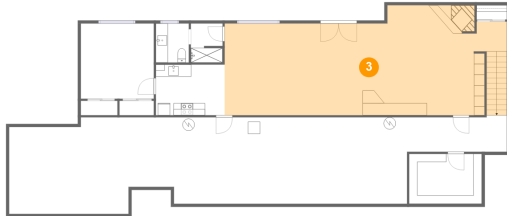


Dimensions: 5'3" x 6'5"
Area: 33 sq. ft
Counted as living area: Yes

Heated: Yes
Finished: Yes
Enclosed: Yes
Contiguous: Yes
Permitted: Yes
Wet space: Yes
Addition: No
Conversion: No

41390 Oretown Road, Cloverdale, Tillamook County, Oregon,
United States, 97112

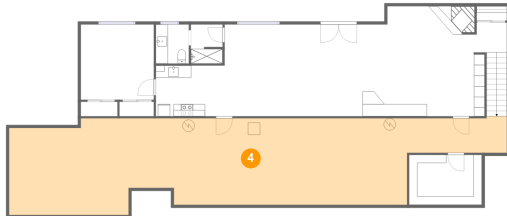
3 Floor 1 - Recreation Room



Dimensions: 46'7" x 18'2"
Area: 744 sq. ft
Counted as living area: Yes

Heated: Yes
Finished: Yes
Enclosed: Yes
Contiguous: Yes
Permitted: Yes
Wet space: No
Addition: No
Conversion: No

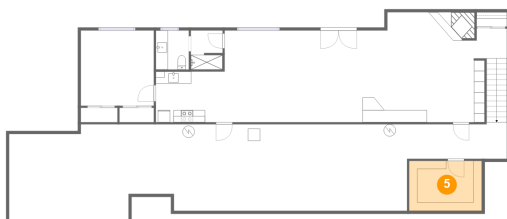
4 Floor 1 - Basement



Dimensions: 82'2" x 15'11"
Area: 1025 sq. ft
Counted as living area: No

Heated: Yes
Finished: No
Enclosed: Yes
Contiguous: Yes
Permitted: Yes
Wet space: No
Addition: No
Conversion: No

5 Floor 1 - Storage

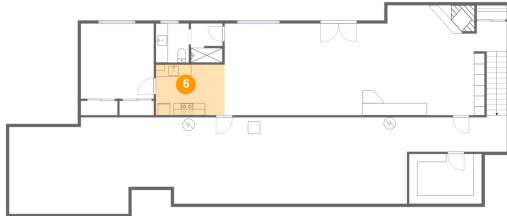


Dimensions: 12'0" x 8'3"
Area: 99 sq. ft
Counted as living area: No

Heated: No
Finished: No
Enclosed: No
Contiguous: Yes
Permitted: Yes
Wet space: No
Addition: No
Conversion: No

41390 Oretown Road, Cloverdale, Tillamook County, Oregon,
United States, 97112

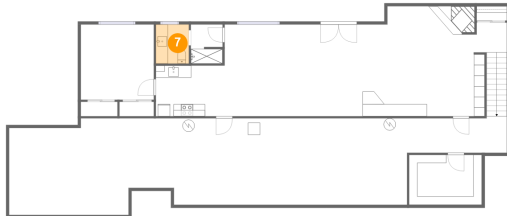
6 Floor 1 - Kitchen



Dimensions: 11'4" x 8'4"
Area: 95 sq. ft
Counted as living area: Yes

Heated: Yes
Finished: Yes
Enclosed: Yes
Contiguous: Yes
Permitted: Yes
Wet space: No
Addition: No
Conversion: No

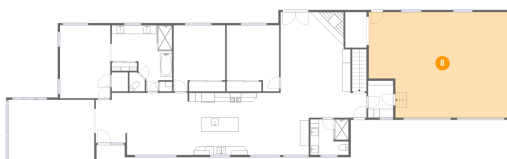
7 Floor 1 - WC



Dimensions: 5'5" x 6'5"
Area: 35 sq. ft
Counted as living area: Yes

Heated: Yes
Finished: Yes
Enclosed: Yes
Contiguous: Yes
Permitted: Yes
Wet space: No
Addition: No
Conversion: No

8 Floor 2 - Garage

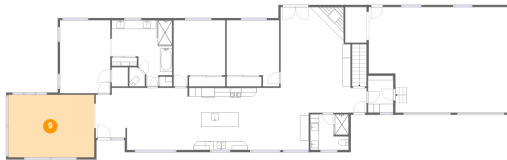


Dimensions: 31'10" x 24'2"
Area: 715 sq. ft
Counted as living area: No

Heated: No
Finished: No
Enclosed: Yes
Contiguous: Yes
Permitted: Yes
Wet space: No
Addition: No
Conversion: No

41390 Oretown Road, Cloverdale, Tillamook County, Oregon,
United States, 97112

9 Floor 2 - Living Room



Dimensions: 19'9" x 14'4"
Area: 283 sq. ft
Counted as living area: Yes

Heated: Yes
Finished: Yes
Enclosed: Yes
Contiguous: Yes
Permitted: Yes
Wet space: No
Addition: No
Conversion: No

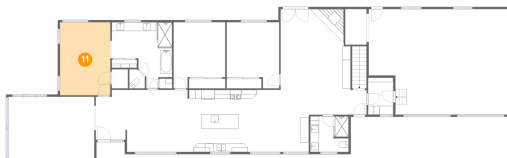
10 Floor 2 - Bedroom



Dimensions: 12'0" x 15'2"
Area: 161 sq. ft
Counted as living area: Yes

Heated: Yes
Finished: Yes
Enclosed: Yes
Contiguous: Yes
Permitted: Yes
Wet space: No
Addition: No
Conversion: No

11 Floor 2 - Primary Bedroom



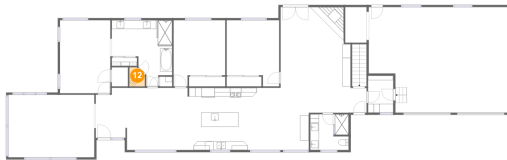
Dimensions: 11'7" x 16'9"
Area: 193 sq. ft
Counted as living area: Yes

Heated: Yes
Finished: Yes
Enclosed: Yes
Contiguous: Yes
Permitted: Yes
Wet space: No
Addition: No
Conversion: No

Home report

41390 Oretown Road, Cloverdale, Tillamook County, Oregon,
United States, 97112

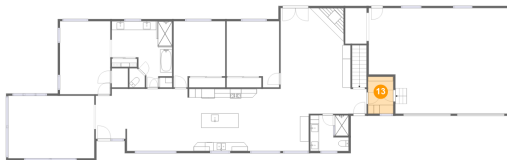
12 Floor 2 - WC



Dimensions: 3'6" x 4'4"
Area: 14 sq. ft
Counted as living area: Yes

Heated: Yes
Finished: Yes
Enclosed: Yes
Contiguous: Yes
Permitted: Yes
Wet space: Yes
Addition: No
Conversion: No

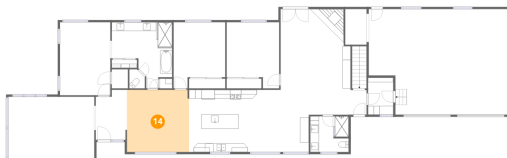
13 Floor 2 - Hall



Dimensions: 5'9" x 8'6"
Area: 49 sq. ft
Counted as living area: Yes

Heated: Yes
Finished: Yes
Enclosed: Yes
Contiguous: Yes
Permitted: Yes
Wet space: No
Addition: No
Conversion: No

14 Floor 2 - Dining Area



Dimensions: 14'2" x 14'3"
Area: 202 sq. ft
Counted as living area: Yes

Heated: Yes
Finished: Yes
Enclosed: Yes
Contiguous: Yes
Permitted: Yes
Wet space: No
Addition: No
Conversion: No

41390 Oretown Road, Cloverdale, Tillamook County, Oregon,
United States, 97112

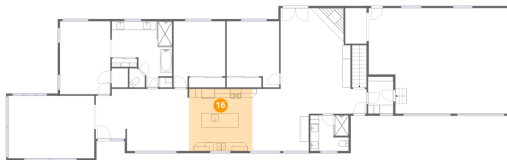
15 Floor 2 - Bedroom



Dimensions: 11'10" x 15'2"
Area: 157 sq. ft
Counted as living area: Yes

Heated: Yes
Finished: Yes
Enclosed: Yes
Contiguous: Yes
Permitted: Yes
Wet space: No
Addition: No
Conversion: No

16 Floor 2 - Kitchen



Dimensions: 14'6" x 14'3"
Area: 207 sq. ft
Counted as living area: Yes

Heated: Yes
Finished: Yes
Enclosed: Yes
Contiguous: Yes
Permitted: Yes
Wet space: No
Addition: No
Conversion: No

17 Floor 2 - Bath

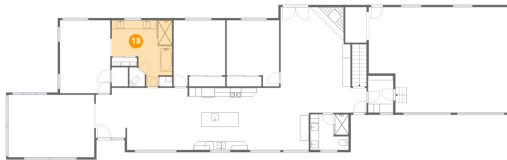


Dimensions: 8'9" x 8'2"
Area: 70 sq. ft
Counted as living area: Yes

Heated: Yes
Finished: Yes
Enclosed: Yes
Contiguous: Yes
Permitted: Yes
Wet space: Yes
Addition: No
Conversion: No

41390 Oretown Road, Cloverdale, Tillamook County, Oregon,
United States, 97112

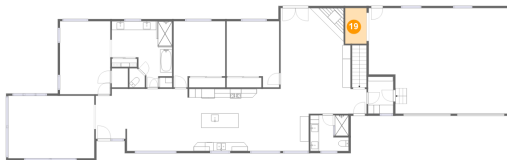
18 Floor 2 - Primary Bath



Dimensions: 13'10" x 15'2"
Area: 153 sq. ft
Counted as living area: Yes

Heated: Yes
Finished: Yes
Enclosed: Yes
Contiguous: Yes
Permitted: Yes
Wet space: Yes
Addition: No
Conversion: No

19 Floor 2 - Storage



Dimensions: 4'11" x 8'2"
Area: 40 sq. ft
Counted as living area: No

Heated: No
Finished: No
Enclosed: No
Contiguous: Yes
Permitted: Yes
Wet space: No
Addition: No
Conversion: No

20 Floor 2 - Breakfast Nook



Dimensions: 12'11" x 14'3"
Area: 184 sq. ft
Counted as living area: Yes

Heated: Yes
Finished: Yes
Enclosed: Yes
Contiguous: Yes
Permitted: Yes
Wet space: No
Addition: No
Conversion: No

41390 Oretown Road, Cloverdale, Tillamook County, Oregon,
United States, 97112

21 Floor 2 - Foyer



Dimensions: 7'2" x 11'5"
Area: 75 sq. ft
Counted as living area: Yes

Heated: Yes
Finished: Yes
Enclosed: Yes
Contiguous: Yes
Permitted: Yes
Wet space: No
Addition: No
Conversion: No

22 Floor 2 - Family Room



Dimensions: 16'0" x 24'2"
Area: 359 sq. ft
Counted as living area: Yes

Heated: Yes
Finished: Yes
Enclosed: Yes
Contiguous: Yes
Permitted: Yes
Wet space: No
Addition: No
Conversion: No