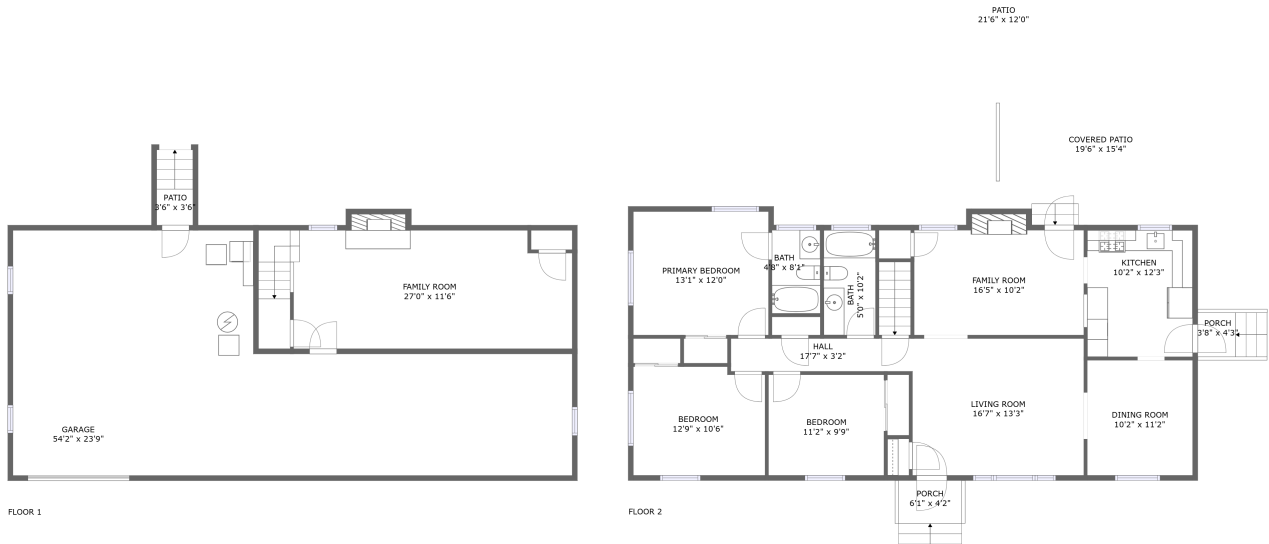



3455 Ashmeade Drive, Cave Spring, Roanoke, Roanoke County, Virginia, United States, 24018



Property summary

 **1** Garages

 **3** Bedrooms

 **2** Bathrooms

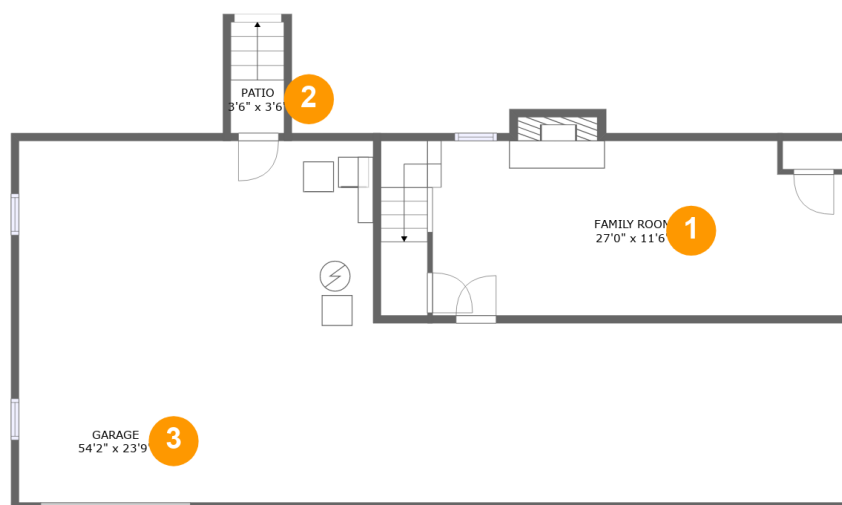
 **0** Half baths

 **2** Floors

 **1,391** Gross living area sqft

 **3,350** Total sqft

3455 Ashmeade Drive, Cave Spring, Roanoke, Roanoke County, Virginia, United States, 24018



Room dimensions

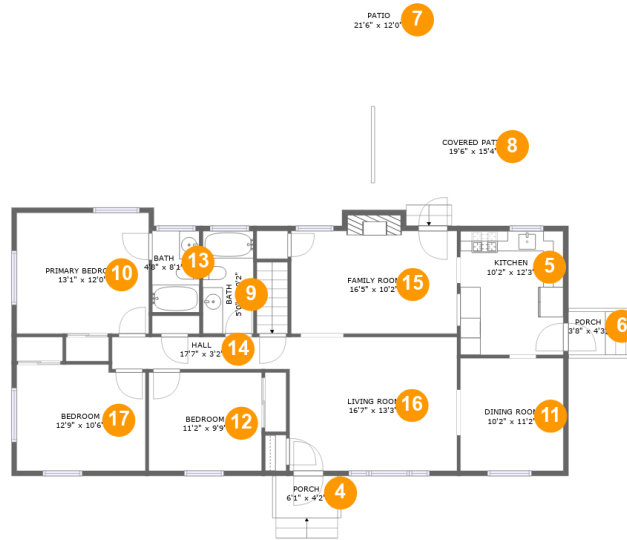
Floor 1

Total sqft: 1402

Living area: 0

#		Dimensions	sqft	Counted as living area
1	Living Room	27'0" x 11'6"	346 sq. ft	No
2	Outdoor	3'6" x 3'6"	26 sq. ft	No
3	Garage	54'2" x 23'9"	917 sq. ft	No

3455 Ashmeade Drive, Cave Spring, Roanoke, Roanoke County, Virginia, United States, 24018



Room dimensions

Floor 2

Total sqft: 1948

Living area: 1391

#		Dimensions	sqft	Counted as living area
4	Outdoor	6'1" x 4'2"	25 sq. ft	No
5	Kitchen	10'2" x 12'3"	126 sq. ft	Yes
6	Outdoor	3'8" x 4'3"	16 sq. ft	No
7	Outdoor	21'6" x 12'0"	212 sq. ft	No
8	Outdoor	19'6" x 15'4"	294 sq. ft	No
9	Bath	5'0" x 10'2"	51 sq. ft	Yes
10	Bedroom	13'1" x 12'0"	157 sq. ft	Yes
11	Dining Room	10'2" x 11'2"	114 sq. ft	Yes
12	Bedroom	11'2" x 9'9"	109 sq. ft	Yes
13	Bath	4'8" x 8'1"	38 sq. ft	Yes
14	Hall	17'7" x 3'2"	56 sq. ft	Yes

3455 Ashmeade Drive, Cave Spring, Roanoke, Roanoke County, Virginia, United States, 24018

#		Dimensions	sqft	Counted as living area
15	Living Room	16'5" x 10'2"	175 sq. ft	Yes
16	Living Room	16'7" x 13'3"	220 sq. ft	Yes
17	Bedroom	12'9" x 10'6"	131 sq. ft	Yes

3455 Ashmeade Drive, Cave Spring, Roanoke, Roanoke County, Virginia, United States, 24018

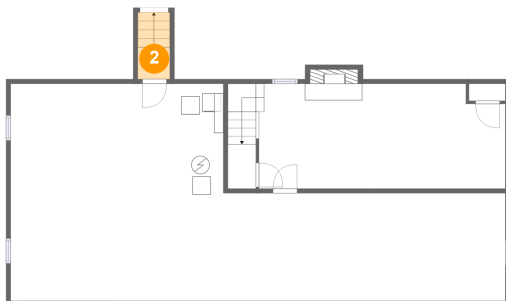
1 Floor 1 - Living Room



Dimensions: 27'0" x 11'6"
Area: 346 sq. ft
Counted as living area: No

Heated: Yes
Finished: Yes
Enclosed: Yes
Contiguous: No
Permitted: Yes
Wet space: No
Addition: No
Conversion: No

2 Floor 1 - Outdoor

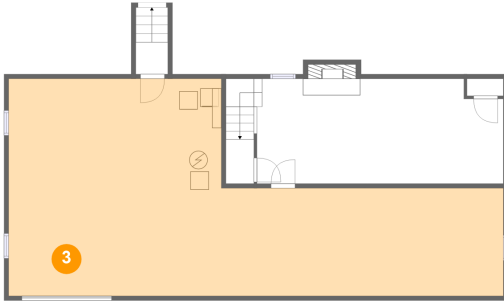


Dimensions: 3'6" x 3'6"
Area: 26 sq. ft
Counted as living area: No

Heated: No
Finished: Yes
Enclosed: No
Contiguous: Yes
Permitted: Yes
Wet space: No
Addition: No
Conversion: No

3455 Ashmeade Drive, Cave Spring, Roanoke, Roanoke County, Virginia, United States, 24018

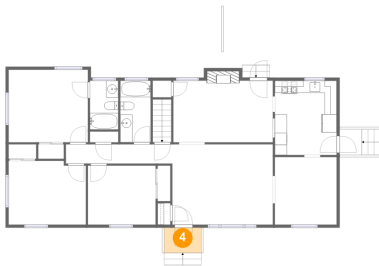
3 Floor 1 - Garage



Dimensions: 54'2" x 23'9"
Area: 917 sq. ft
Counted as living area: No

Heated: No
Finished: No
Enclosed: Yes
Contiguous: Yes
Permitted: Yes
Wet space: No
Addition: No
Conversion: No

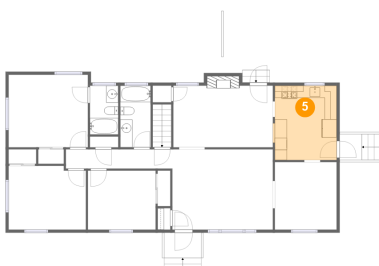
4 Floor 2 - Outdoor



Dimensions: 6'1" x 4'2"
Area: 25 sq. ft
Counted as living area: No

Heated: No
Finished: Yes
Enclosed: No
Contiguous: Yes
Permitted: Yes
Wet space: No
Addition: No
Conversion: No

5 Floor 2 - Kitchen

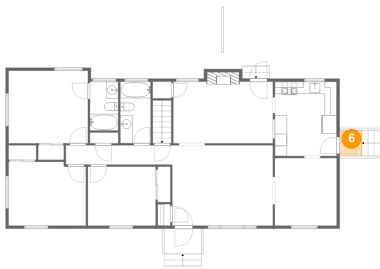


Dimensions: 10'2" x 12'3"
Area: 126 sq. ft
Counted as living area: Yes

Heated: Yes
Finished: Yes
Enclosed: Yes
Contiguous: Yes
Permitted: Yes
Wet space: No
Addition: No
Conversion: No

3455 Ashmeade Drive, Cave Spring, Roanoke, Roanoke County, Virginia, United States, 24018

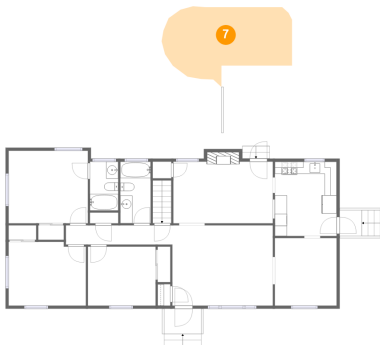
6 Floor 2 - Outdoor



Dimensions: 3'8" x 4'3"
Area: 16 sq. ft
Counted as living area: No

Heated: No
Finished: Yes
Enclosed: No
Contiguous: Yes
Permitted: Yes
Wet space: No
Addition: No
Conversion: No

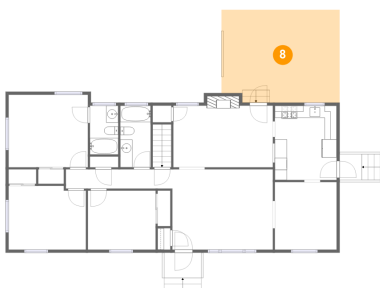
7 Floor 2 - Outdoor



Dimensions: 21'6" x 12'0"
Area: 212 sq. ft
Counted as living area: No

Heated: No
Finished: Yes
Enclosed: No
Contiguous: Yes
Permitted: Yes
Wet space: No
Addition: No
Conversion: No

8 Floor 2 - Outdoor

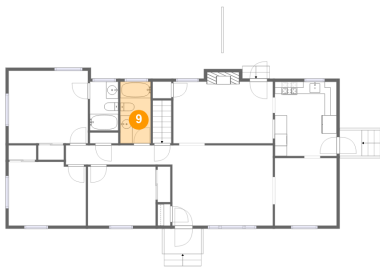


Dimensions: 19'6" x 15'4"
Area: 294 sq. ft
Counted as living area: No

Heated: No
Finished: Yes
Enclosed: No
Contiguous: Yes
Permitted: Yes
Wet space: No
Addition: No
Conversion: No

3455 Ashmeade Drive, Cave Spring, Roanoke, Roanoke County, Virginia, United States, 24018

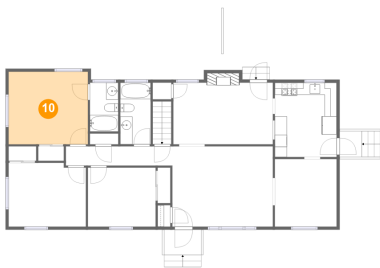
9 Floor 2 - Bath



Dimensions: 5'0" x 10'2"
Area: 51 sq. ft
Counted as living area: Yes

Heated: Yes
Finished: Yes
Enclosed: Yes
Contiguous: Yes
Permitted: Yes
Wet space: Yes
Addition: No
Conversion: No

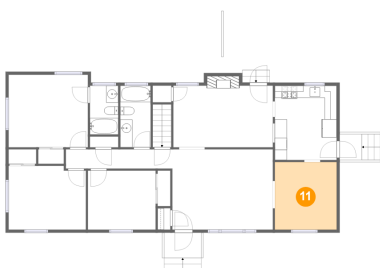
10 Floor 2 - Bedroom



Dimensions: 13'1" x 12'0"
Area: 157 sq. ft
Counted as living area: Yes

Heated: Yes
Finished: Yes
Enclosed: Yes
Contiguous: Yes
Permitted: Yes
Wet space: No
Addition: No
Conversion: No

11 Floor 2 - Dining Room

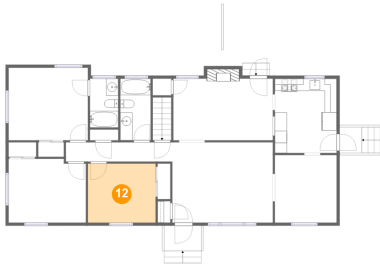


Dimensions: 10'2" x 11'2"
Area: 114 sq. ft
Counted as living area: Yes

Heated: Yes
Finished: Yes
Enclosed: Yes
Contiguous: Yes
Permitted: Yes
Wet space: No
Addition: No
Conversion: No

3455 Ashmeade Drive, Cave Spring, Roanoke, Roanoke County, Virginia, United States, 24018

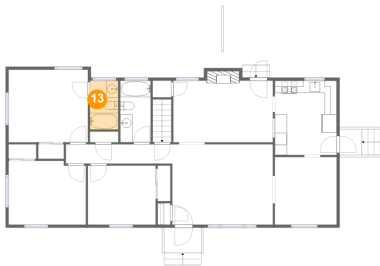
12 Floor 2 - Bedroom



Dimensions: 11'2" x 9'9"
Area: 109 sq. ft
Counted as living area: Yes

Heated: Yes
Finished: Yes
Enclosed: Yes
Contiguous: Yes
Permitted: Yes
Wet space: No
Addition: No
Conversion: No

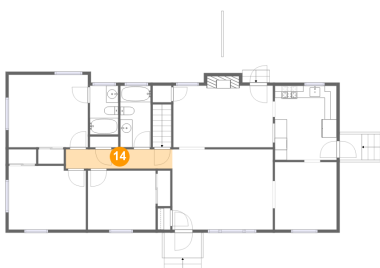
13 Floor 2 - Bath



Dimensions: 4'8" x 8'1"
Area: 38 sq. ft
Counted as living area: Yes

Heated: Yes
Finished: Yes
Enclosed: Yes
Contiguous: Yes
Permitted: Yes
Wet space: Yes
Addition: No
Conversion: No

14 Floor 2 - Hall

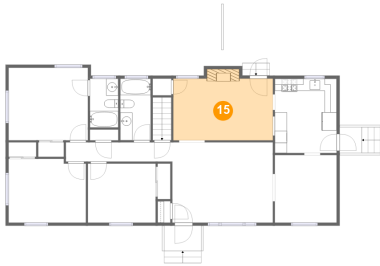


Dimensions: 17'7" x 3'2"
Area: 56 sq. ft
Counted as living area: Yes

Heated: Yes
Finished: Yes
Enclosed: Yes
Contiguous: Yes
Permitted: Yes
Wet space: No
Addition: No
Conversion: No

3455 Ashmeade Drive, Cave Spring, Roanoke, Roanoke County, Virginia, United States, 24018

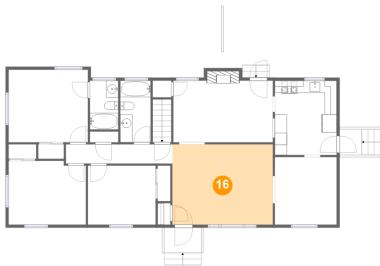
15 Floor 2 - Living Room



Dimensions: 16'5" x 10'2"
Area: 175 sq. ft
Counted as living area: Yes

Heated: Yes
Finished: Yes
Enclosed: Yes
Contiguous: Yes
Permitted: Yes
Wet space: No
Addition: No
Conversion: No

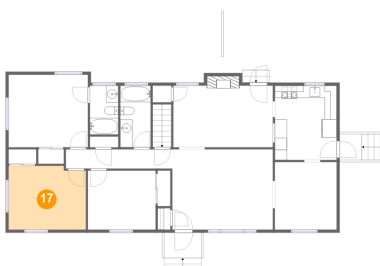
16 Floor 2 - Living Room



Dimensions: 16'7" x 13'3"
Area: 220 sq. ft
Counted as living area: Yes

Heated: Yes
Finished: Yes
Enclosed: Yes
Contiguous: Yes
Permitted: Yes
Wet space: No
Addition: No
Conversion: No

17 Floor 2 - Bedroom



Dimensions: 12'9" x 10'6"
Area: 131 sq. ft
Counted as living area: Yes

Heated: Yes
Finished: Yes
Enclosed: Yes
Contiguous: Yes
Permitted: Yes
Wet space: No
Addition: No
Conversion: No