


Home report

22615 West 87th Terrace, Lenexa, Johnson County, Kansas,  
United States, 66227



Property summary

 **1** Garages

 **4** Bedrooms

 **3** Bathrooms

 **1** Half baths

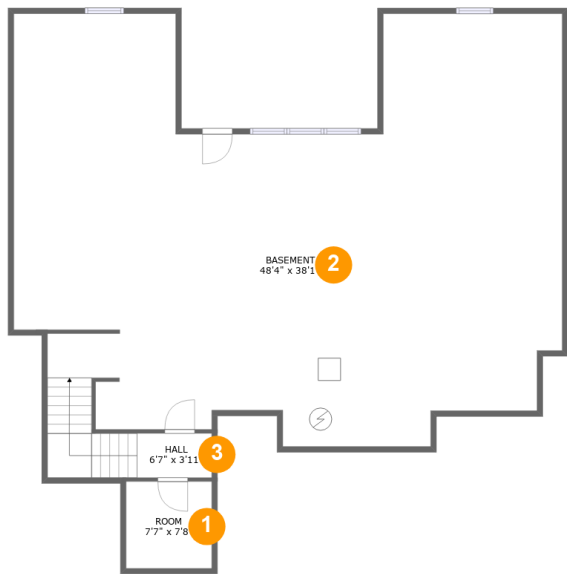
 **3** Floors

 **2,863** Gross living area sqft

 **5,901** Total sqft

Home report

22615 West 87th Terrace, Lenexa, Johnson County, Kansas,  
United States, 66227



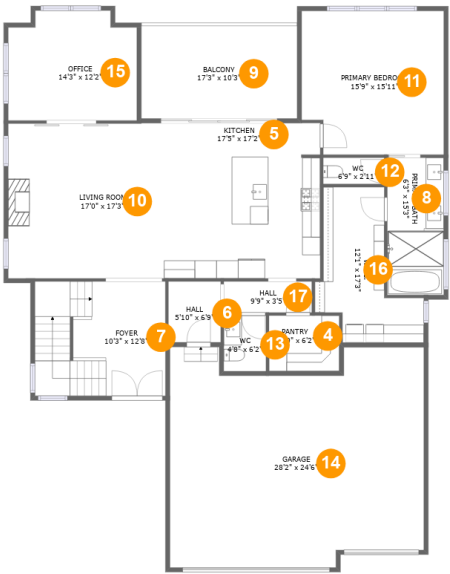
Room dimensions

Floor 1 Total sqft: 1763    Living area: 0

#		Dimensions	sqft	Counted as living area
1	Room	7'7" x 7'8"	58 sq. ft	No
2	Basement	48'4" x 38'1"	1557 sq. ft	No
3	Hall	6'7" x 3'11"	26 sq. ft	No

Home report

22615 West 87th Terrace, Lenexa, Johnson County, Kansas,  
United States, 66227



Room dimensions

Floor 2 Total sqft: 2582    Living area: 1742

#		Dimensions	sqft	Counted as living area
4	Pantry	7'10" x 6'2"	48 sq. ft	Yes
5	Kitchen	17'5" x 17'2"	300 sq. ft	Yes
6	Hall	5'10" x 6'9"	39 sq. ft	Yes
7	Foyer	10'3" x 12'8"	184 sq. ft	Yes
8	Primary Bath	6'3" x 15'3"	95 sq. ft	Yes
9	Balcony	17'3" x 10'3"	178 sq. ft	No
10	Living Room	17'0" x 17'3"	295 sq. ft	Yes
11	Primary Bedroom	15'9" x 15'11"	242 sq. ft	Yes
12	WC	6'9" x 2'11"	20 sq. ft	Yes
13	WC	4'8" x 6'2"	29 sq. ft	Yes
14	Garage	28'2" x 24'6"	626 sq. ft	No

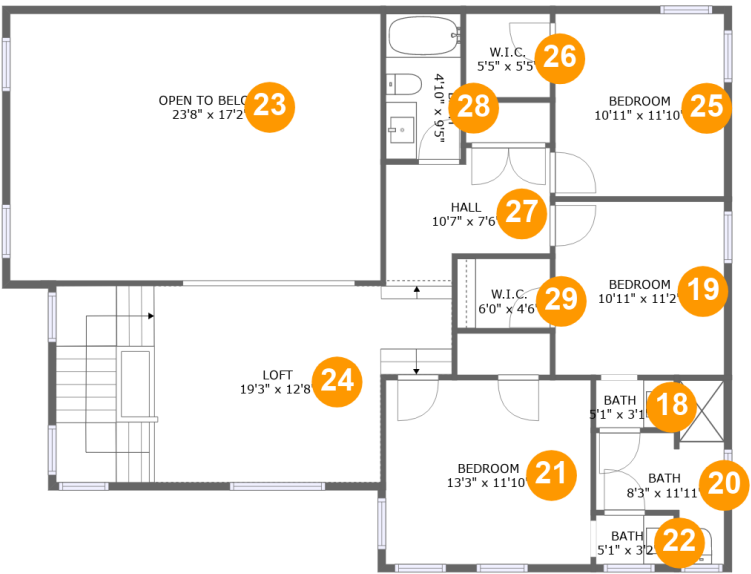
Home report

22615 West 87th Terrace, Lenexa, Johnson County, Kansas,  
United States, 66227

#		Dimensions	sqft	Counted as living area
15	Office	14'3" x 12'2"	163 sq. ft	Yes
16	W.I.C.	12'1" x 17'3"	135 sq. ft	Yes
17	Hall	9'9" x 3'5"	34 sq. ft	Yes

Home report

22615 West 87th Terrace, Lenexa, Johnson County, Kansas,  
United States, 66227



Room dimensions

Floor 3 Total sqft: 1556    Living area: 1121

#		Dimensions	sqft	Counted as living area
18	Bath	5'1" x 3'1"	16 sq. ft	Yes
19	Bedroom	10'11" x 11'2"	122 sq. ft	Yes
20	Bath	8'3" x 11'11"	61 sq. ft	Yes
21	Bedroom	13'3" x 11'10"	158 sq. ft	Yes
22	Bath	5'1" x 3'2"	16 sq. ft	Yes
23	Open To Below	23'8" x 17'2"	412 sq. ft	No
24	Loft	19'3" x 12'8"	298 sq. ft	Yes
25	Bedroom	10'11" x 11'10"	129 sq. ft	Yes
26	W.I.C.	5'5" x 5'5"	29 sq. ft	Yes
27	Hall	10'7" x 7'6"	74 sq. ft	Yes
28	Bath	4'10" x 9'5"	45 sq. ft	Yes

Home report

22615 West 87th Terrace, Lenexa, Johnson County, Kansas,  
United States, 66227

#		Dimensions	sqft	Counted as living area
29	W.I.C.	6'0" x 4'6"	27 sq. ft	Yes

22615 West 87th Terrace, Lenexa, Johnson County, Kansas,  
United States, 66227

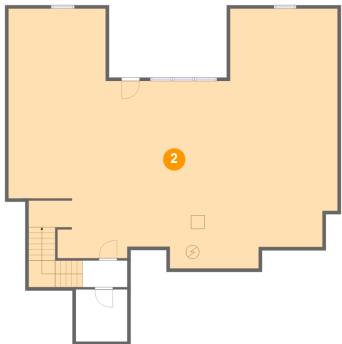
1 Floor 1 - Room



Dimensions: 7'7" x 7'8"  
Area: 58 sq. ft  
Counted as living area: No

Heated: Yes  
Finished: No  
Enclosed: Yes  
Contiguous: Yes  
Permitted: Yes  
Wet space: No  
Addition: No  
Conversion: No

2 Floor 1 - Basement

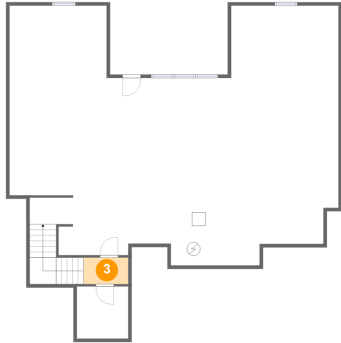


Dimensions: 48'4" x 38'1"  
Area: 1557 sq. ft  
Counted as living area: No

Heated: Yes  
Finished: No  
Enclosed: Yes  
Contiguous: Yes  
Permitted: Yes  
Wet space: No  
Addition: No  
Conversion: No

22615 West 87th Terrace, Lenexa, Johnson County, Kansas,  
United States, 66227

### 3 Floor 1 - Hall



Dimensions: 6'7" x 3'11"  
Area: 26 sq. ft  
Counted as living area: No

Heated: Yes  
Finished: Yes  
Enclosed: Yes  
Contiguous: No  
Permitted: Yes  
Wet space: No  
Addition: No  
Conversion: No

### 4 Floor 2 - Pantry



Dimensions: 7'10" x 6'2"  
Area: 48 sq. ft  
Counted as living area: Yes

Heated: Yes  
Finished: Yes  
Enclosed: Yes  
Contiguous: Yes  
Permitted: Yes  
Wet space: No  
Addition: No  
Conversion: No

### 5 Floor 2 - Kitchen



Dimensions: 17'5" x 17'2"  
Area: 300 sq. ft  
Counted as living area: Yes

Heated: Yes  
Finished: Yes  
Enclosed: Yes  
Contiguous: Yes  
Permitted: Yes  
Wet space: No  
Addition: No  
Conversion: No



22615 West 87th Terrace, Lenexa, Johnson County, Kansas,  
United States, 66227

## 6 Floor 2 - Hall



Dimensions: 5'10" x 6'9"  
Area: 39 sq. ft  
Counted as living area: Yes

Heated: Yes  
Finished: Yes  
Enclosed: Yes  
Contiguous: Yes  
Permitted: Yes  
Wet space: No  
Addition: No  
Conversion: No

## 7 Floor 2 - Foyer



Dimensions: 10'3" x 12'8"  
Area: 184 sq. ft  
Counted as living area: Yes

Heated: Yes  
Finished: Yes  
Enclosed: Yes  
Contiguous: Yes  
Permitted: Yes  
Wet space: No  
Addition: No  
Conversion: No

## 8 Floor 2 - Primary Bath



Dimensions: 6'3" x 15'3"  
Area: 95 sq. ft  
Counted as living area: Yes

Heated: Yes  
Finished: Yes  
Enclosed: Yes  
Contiguous: Yes  
Permitted: Yes  
Wet space: Yes  
Addition: No  
Conversion: No

22615 West 87th Terrace, Lenexa, Johnson County, Kansas,  
United States, 66227

## 9 Floor 2 - Balcony



Dimensions: 17'3" x 10'3"  
Area: 178 sq. ft  
Counted as living area: No

Heated: No  
Finished: Yes  
Enclosed: No  
Contiguous: Yes  
Permitted: Yes  
Wet space: No  
Addition: No  
Conversion: No

## 10 Floor 2 - Living Room



Dimensions: 17'0" x 17'3"  
Area: 295 sq. ft  
Counted as living area: Yes

Heated: Yes  
Finished: Yes  
Enclosed: Yes  
Contiguous: Yes  
Permitted: Yes  
Wet space: No  
Addition: No  
Conversion: No

## 11 Floor 2 - Primary Bedroom



Dimensions: 15'9" x 15'11"  
Area: 242 sq. ft  
Counted as living area: Yes

Heated: Yes  
Finished: Yes  
Enclosed: Yes  
Contiguous: Yes  
Permitted: Yes  
Wet space: No  
Addition: No  
Conversion: No

22615 West 87th Terrace, Lenexa, Johnson County, Kansas,  
United States, 66227

12 Floor 2 - WC



Dimensions: 6'9" x 2'11"  
Area: 20 sq. ft  
Counted as living area: Yes

Heated: Yes  
Finished: Yes  
Enclosed: Yes  
Contiguous: Yes  
Permitted: Yes  
Wet space: Yes  
Addition: No  
Conversion: No

13 Floor 2 - WC



Dimensions: 4'8" x 6'2"  
Area: 29 sq. ft  
Counted as living area: Yes

Heated: Yes  
Finished: Yes  
Enclosed: Yes  
Contiguous: Yes  
Permitted: Yes  
Wet space: Yes  
Addition: No  
Conversion: No

14 Floor 2 - Garage



Dimensions: 28'2" x 24'6"  
Area: 626 sq. ft  
Counted as living area: No

Heated: No  
Finished: No  
Enclosed: Yes  
Contiguous: Yes  
Permitted: Yes  
Wet space: No  
Addition: No  
Conversion: No

22615 West 87th Terrace, Lenexa, Johnson County, Kansas,  
United States, 66227

## 15 Floor 2 - Office



Dimensions: 14'3" x 12'2"  
Area: 163 sq. ft  
Counted as living area: Yes

Heated: Yes  
Finished: Yes  
Enclosed: Yes  
Contiguous: Yes  
Permitted: Yes  
Wet space: No  
Addition: No  
Conversion: No

## 16 Floor 2 - W.I.C.



Dimensions: 12'1" x 17'3"  
Area: 135 sq. ft  
Counted as living area: Yes

Heated: Yes  
Finished: Yes  
Enclosed: Yes  
Contiguous: Yes  
Permitted: Yes  
Wet space: No  
Addition: No  
Conversion: No

## 17 Floor 2 - Hall

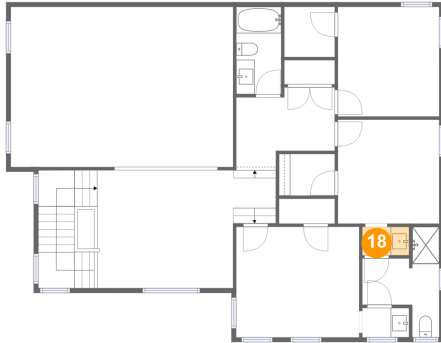


Dimensions: 9'9" x 3'5"  
Area: 34 sq. ft  
Counted as living area: Yes

Heated: Yes  
Finished: Yes  
Enclosed: Yes  
Contiguous: Yes  
Permitted: Yes  
Wet space: No  
Addition: No  
Conversion: No

22615 West 87th Terrace, Lenexa, Johnson County, Kansas,  
United States, 66227

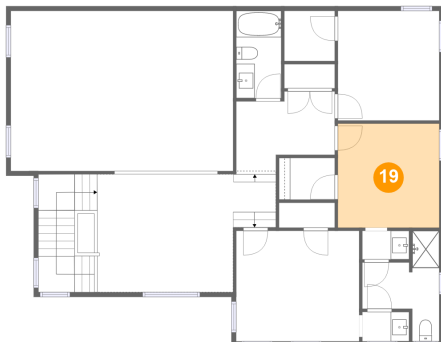
### 18 Floor 3 - Bath



Dimensions: 5'1" x 3'1"  
Area: 16 sq. ft  
Counted as living area: Yes

Heated: Yes  
Finished: Yes  
Enclosed: Yes  
Contiguous: Yes  
Permitted: Yes  
Wet space: Yes  
Addition: No  
Conversion: No

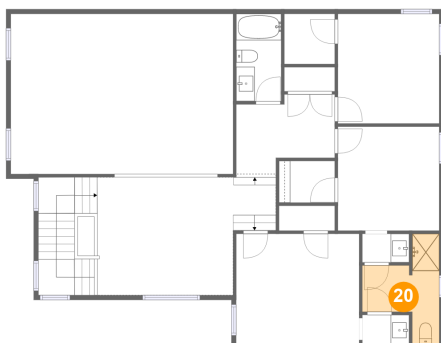
### 19 Floor 3 - Bedroom



Dimensions: 10'11" x 11'2"  
Area: 122 sq. ft  
Counted as living area: Yes

Heated: Yes  
Finished: Yes  
Enclosed: Yes  
Contiguous: Yes  
Permitted: Yes  
Wet space: No  
Addition: No  
Conversion: No

### 20 Floor 3 - Bath

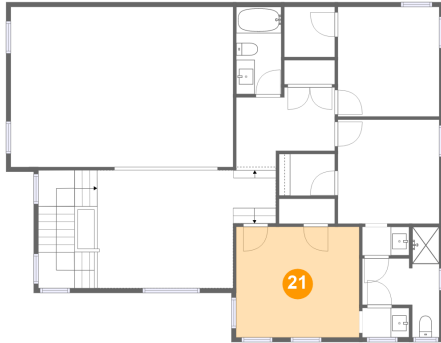


Dimensions: 8'3" x 11'11"  
Area: 61 sq. ft  
Counted as living area: Yes

Heated: Yes  
Finished: Yes  
Enclosed: Yes  
Contiguous: Yes  
Permitted: Yes  
Wet space: Yes  
Addition: No  
Conversion: No

22615 West 87th Terrace, Lenexa, Johnson County, Kansas,  
United States, 66227

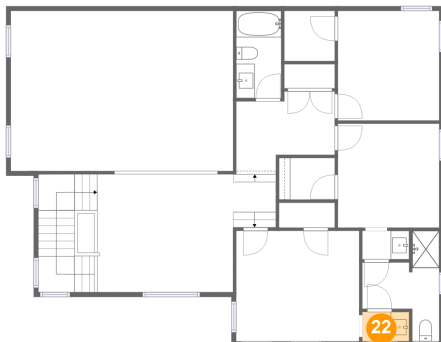
### 21 Floor 3 - Bedroom



Dimensions: 13'3" x 11'10"  
Area: 158 sq. ft  
Counted as living area: Yes

Heated: Yes  
Finished: Yes  
Enclosed: Yes  
Contiguous: Yes  
Permitted: Yes  
Wet space: No  
Addition: No  
Conversion: No

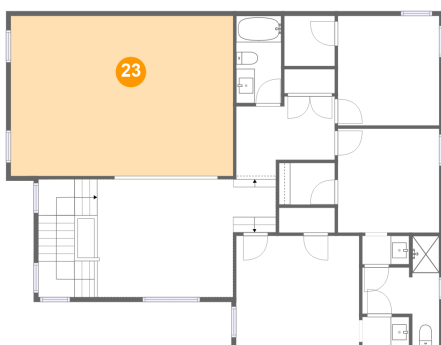
### 22 Floor 3 - Bath



Dimensions: 5'1" x 3'2"  
Area: 16 sq. ft  
Counted as living area: Yes

Heated: Yes  
Finished: Yes  
Enclosed: Yes  
Contiguous: Yes  
Permitted: Yes  
Wet space: Yes  
Addition: No  
Conversion: No

### 23 Floor 3 - Open To Below

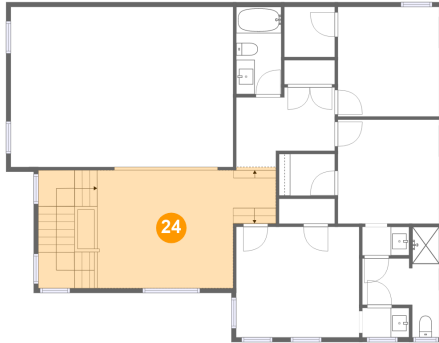


Dimensions: 23'8" x 17'2"  
Area: 412 sq. ft  
Counted as living area: No

Heated: No  
Finished: No  
Enclosed: No  
Contiguous: Yes  
Permitted: No  
Wet space: No  
Addition: No  
Conversion: No

22615 West 87th Terrace, Lenexa, Johnson County, Kansas,  
United States, 66227

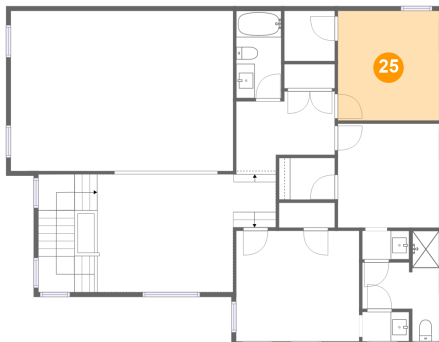
### 24 Floor 3 - Loft



Dimensions: 19'3" x 12'8"  
Area: 298 sq. ft  
Counted as living area: Yes

Heated: Yes  
Finished: Yes  
Enclosed: Yes  
Contiguous: Yes  
Permitted: Yes  
Wet space: No  
Addition: No  
Conversion: No

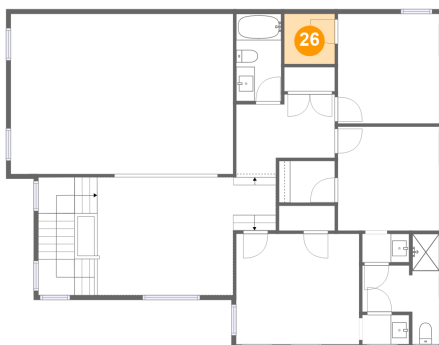
### 25 Floor 3 - Bedroom



Dimensions: 10'11" x 11'10"  
Area: 129 sq. ft  
Counted as living area: Yes

Heated: Yes  
Finished: Yes  
Enclosed: Yes  
Contiguous: Yes  
Permitted: Yes  
Wet space: No  
Addition: No  
Conversion: No

### 26 Floor 3 - W.I.C.

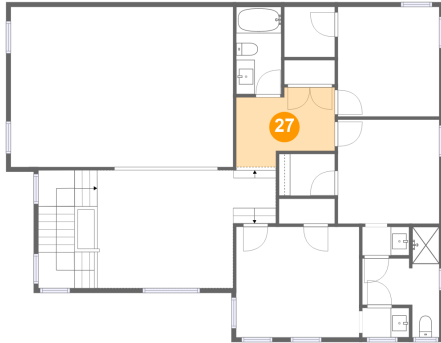


Dimensions: 5'5" x 5'5"  
Area: 29 sq. ft  
Counted as living area: Yes

Heated: Yes  
Finished: Yes  
Enclosed: Yes  
Contiguous: Yes  
Permitted: Yes  
Wet space: No  
Addition: No  
Conversion: No

22615 West 87th Terrace, Lenexa, Johnson County, Kansas,  
United States, 66227

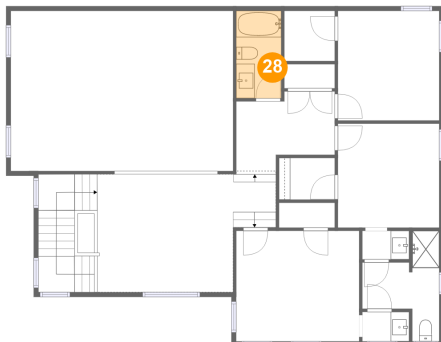
### 27 Floor 3 - Hall



Dimensions: 10'7" x 7'6"  
Area: 74 sq. ft  
Counted as living area: Yes

Heated: Yes  
Finished: Yes  
Enclosed: Yes  
Contiguous: Yes  
Permitted: Yes  
Wet space: No  
Addition: No  
Conversion: No

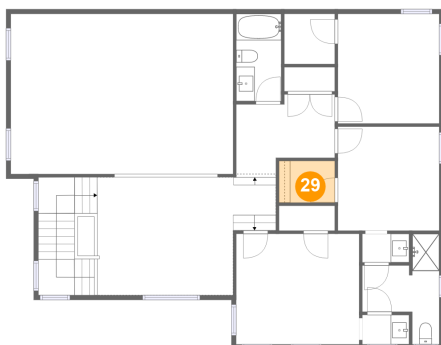
### 28 Floor 3 - Bath



Dimensions: 4'10" x 9'5"  
Area: 45 sq. ft  
Counted as living area: Yes

Heated: Yes  
Finished: Yes  
Enclosed: Yes  
Contiguous: Yes  
Permitted: Yes  
Wet space: Yes  
Addition: No  
Conversion: No

### 29 Floor 3 - W.I.C.



Dimensions: 6'0" x 4'6"  
Area: 27 sq. ft  
Counted as living area: Yes

Heated: Yes  
Finished: Yes  
Enclosed: Yes  
Contiguous: Yes  
Permitted: Yes  
Wet space: No  
Addition: No  
Conversion: No