


# 920 East Lake Drive, East Lake, Tarpon Springs, Pinellas County, Florida, United States, 34688



## Property summary


 **2** Garages

 **4** Bedrooms

 **4** Bathrooms

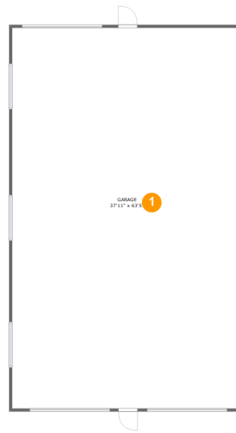
 **1** Half baths

 **4** Floors

 **3,223**  
Gross living  
area sqft

 **9,122**  
Total sqft

920 East Lake Drive, East Lake, Tarpon Springs,  
Pinellas County, Florida, United States, 34688



## Room dimensions

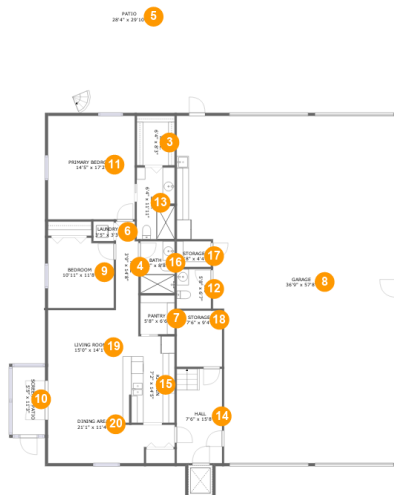
Floor 1

Total sqft: 2600

Living area: 0

#		Dimensions	sqft	Counted as living area
1	Garage	37'11" x 63'5"	2405 sq. ft	No
2	Storage Shed	7'11" x 9'4"	74 sq. ft	No

# 920 East Lake Drive, East Lake, Tarpon Springs, Pinellas County, Florida, United States, 34688



## Room dimensions

Floor 2

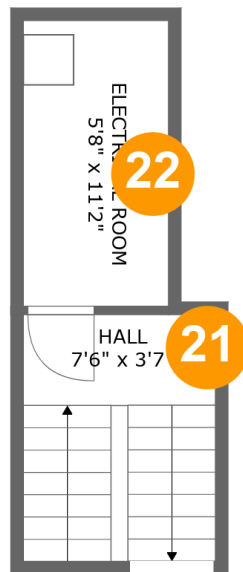
Total sqft: 4415 Living area: 1441

#		Dimensions	sqft	Counted as living area
3	W.I.C.	6'4" x 8'3"	52 sq. ft	Yes
4	Hall	3'9" x 14'8"	53 sq. ft	Yes
5	Patio	28'4" x 29'10"	848 sq. ft	No
6	Laundry	3'5" x 3'3"	11 sq. ft	Yes
7	Pantry	5'8" x 6'6"	37 sq. ft	Yes
8	Garage	36'9" x 57'8"	1846 sq. ft	No
9	Bedroom	10'11" x 11'8"	124 sq. ft	Yes
10	Screened Patio	5'5" x 11'3"	62 sq. ft	No
11	Primary Bedroom	14'5" x 17'2"	248 sq. ft	Yes
12	WC	5'8" x 6'7"	37 sq. ft	No
13	Bath	6'4" x 11'11"	74 sq. ft	Yes

**920 East Lake Drive, East Lake, Tarpon Springs,  
Pinellas County, Florida, United States, 34688**

#		Dimensions	sqft	Counted as living area
14	Hall	7'6" x 15'8"	118 sq. ft	Yes
15	Kitchen	7'2" x 14'5"	102 sq. ft	Yes
16	Bath	5'8" x 8'8"	49 sq. ft	Yes
17	Storage	5'8" x 4'4"	24 sq. ft	No
18	Storage	7'6" x 9'4"	70 sq. ft	No
19	Living Room	15'0" x 14'1"	202 sq. ft	Yes
20	Dining Area	21'1" x 11'4"	187 sq. ft	Yes

**920 East Lake Drive, East Lake, Tarpon Springs,  
Pinellas County, Florida, United States, 34688**



## Room dimensions

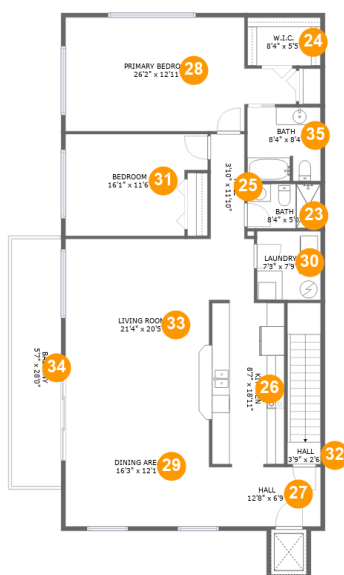
Floor 3

Total sqft: 168

Living area: 0

#		Dimensions	sqft	Counted as living area
21	Hall	7'6" x 3'7"	73 sq. ft	No
22	Electrical Room	5'8" x 11'2"	64 sq. ft	No

# 920 East Lake Drive, East Lake, Tarpon Springs, Pinellas County, Florida, United States, 34688



## Room dimensions

Floor 4

Total sqft: 1939 Living area: 1782

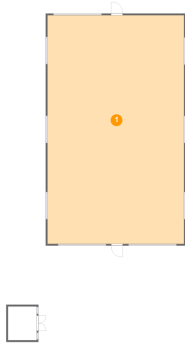
#		Dimensions	sqft	Counted as living area
23	Bath	8'4" x 5'0"	42 sq. ft	Yes
24	W.I.C.	8'4" x 5'5"	45 sq. ft	Yes
25	Hall	3'10" x 11'10"	45 sq. ft	Yes
26	Kitchen	8'7" x 18'11"	160 sq. ft	Yes
27	Hall	12'8" x 6'9"	85 sq. ft	Yes
28	Primary Bedroom	26'2" x 12'11"	285 sq. ft	Yes
29	Dining Area	16'3" x 12'1"	197 sq. ft	Yes
30	Laundry	7'3" x 7'9"	56 sq. ft	Yes
31	Bedroom	16'1" x 11'6"	166 sq. ft	Yes
32	Hall	3'9" x 2'6"	69 sq. ft	Yes
33	Living Room	21'4" x 20'5"	368 sq. ft	Yes

**920 East Lake Drive, East Lake, Tarpon Springs,  
Pinellas County, Florida, United States, 34688**

#		Dimensions	sqft	Counted as living area
34	Balcony	5'7" x 28'0"	157 sq. ft	No
35	Bath	8'4" x 8'4"	68 sq. ft	Yes

# 920 East Lake Drive, East Lake, Tarpon Springs, Pinellas County, Florida, United States, 34688

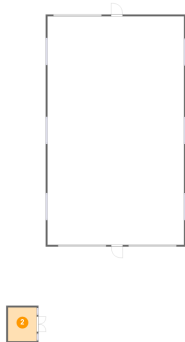
## 1 Floor 1 - Garage



Dimensions: 37'11" x 63'5"  
Area: 2405 sq. ft  
Counted as living area: No

Heated: No  
Finished: No  
Enclosed: Yes  
Contiguous: Yes  
Permitted: Yes  
Wet space: No  
Addition: No  
Conversion: No

## 2 Floor 1 - Storage Shed



Dimensions: 7'11" x 9'4"  
Area: 74 sq. ft  
Counted as living area: No

Heated: No  
Finished: No  
Enclosed: No  
Contiguous: Yes  
Permitted: Yes  
Wet space: No  
Addition: No  
Conversion: No



920 East Lake Drive, East Lake, Tarpon Springs,  
Pinellas County, Florida, United States, 34688

### 3 Floor 2 - W.I.C.



Dimensions: 6'4" x 8'3"  
Area: 52 sq. ft  
Counted as living area: Yes

Heated: Yes  
Finished: Yes  
Enclosed: Yes  
Contiguous: Yes  
Permitted: Yes  
Wet space: No  
Addition: No  
Conversion: No

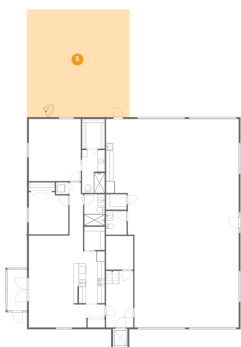
### 4 Floor 2 - Hall



Dimensions: 3'9" x 14'8"  
Area: 53 sq. ft  
Counted as living area: Yes

Heated: Yes  
Finished: Yes  
Enclosed: Yes  
Contiguous: Yes  
Permitted: Yes  
Wet space: No  
Addition: No  
Conversion: No

### 5 Floor 2 - Patio



Dimensions: 28'4" x 29'10"  
Area: 848 sq. ft  
Counted as living area: No

Heated: No  
Finished: Yes  
Enclosed: No  
Contiguous: Yes  
Permitted: Yes  
Wet space: No  
Addition: No  
Conversion: No

**920 East Lake Drive, East Lake, Tarpon Springs,  
Pinellas County, Florida, United States, 34688**

**6 Floor 2 - Laundry**



Dimensions: 3'5" x 3'3"  
Area: 11 sq. ft  
Counted as living area: Yes

Heated: Yes  
Finished: Yes  
Enclosed: Yes  
Contiguous: Yes  
Permitted: Yes  
Wet space: No  
Addition: No  
Conversion: No

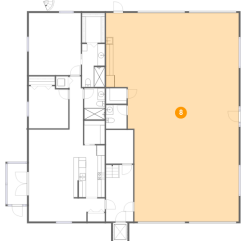
**7 Floor 2 - Pantry**



Dimensions: 5'8" x 6'6"  
Area: 37 sq. ft  
Counted as living area: Yes

Heated: Yes  
Finished: Yes  
Enclosed: Yes  
Contiguous: Yes  
Permitted: Yes  
Wet space: No  
Addition: No  
Conversion: No

**8 Floor 2 - Garage**



Dimensions: 36'9" x 57'8"  
Area: 1846 sq. ft  
Counted as living area: No

Heated: No  
Finished: Yes  
Enclosed: Yes  
Contiguous: Yes  
Permitted: Yes  
Wet space: No  
Addition: No  
Conversion: No

# 920 East Lake Drive, East Lake, Tarpon Springs, Pinellas County, Florida, United States, 34688

## 9 Floor 2 - Bedroom



Dimensions: 10'11" x 11'8"  
Area: 124 sq. ft  
Counted as living area: Yes

Heated: Yes  
Finished: Yes  
Enclosed: Yes  
Contiguous: Yes  
Permitted: Yes  
Wet space: No  
Addition: No  
Conversion: No

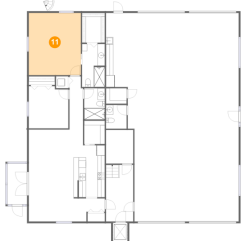
## 10 Floor 2 - Screened Patio



Dimensions: 5'5" x 11'3"  
Area: 62 sq. ft  
Counted as living area: No

Heated: No  
Finished: Yes  
Enclosed: No  
Contiguous: Yes  
Permitted: Yes  
Wet space: No  
Addition: No  
Conversion: No

## 11 Floor 2 - Primary Bedroom



Dimensions: 14'5" x 17'2"  
Area: 248 sq. ft  
Counted as living area: Yes

Heated: Yes  
Finished: Yes  
Enclosed: Yes  
Contiguous: Yes  
Permitted: Yes  
Wet space: No  
Addition: No  
Conversion: No

**920 East Lake Drive, East Lake, Tarpon Springs,  
Pinellas County, Florida, United States, 34688**

**12 Floor 2 - WC**



Dimensions: 5'8" x 6'7"  
Area: 37 sq. ft  
Counted as living area: No

Heated: Yes  
Finished: Yes  
Enclosed: Yes  
Contiguous: No  
Permitted: Yes  
Wet space: Yes  
Addition: No  
Conversion: No

**13 Floor 2 - Bath**



Dimensions: 6'4" x 11'11"  
Area: 74 sq. ft  
Counted as living area: Yes

Heated: Yes  
Finished: Yes  
Enclosed: Yes  
Contiguous: Yes  
Permitted: Yes  
Wet space: Yes  
Addition: No  
Conversion: No

**14 Floor 2 - Hall**



Dimensions: 7'6" x 15'8"  
Area: 118 sq. ft  
Counted as living area: Yes

Heated: Yes  
Finished: Yes  
Enclosed: Yes  
Contiguous: Yes  
Permitted: Yes  
Wet space: No  
Addition: No  
Conversion: No

**920 East Lake Drive, East Lake, Tarpon Springs,  
Pinellas County, Florida, United States, 34688**

**15 Floor 2 - Kitchen**

---



Dimensions: 7'2" x 14'5"  
Area: 102 sq. ft  
Counted as living area: Yes

Heated: Yes  
Finished: Yes  
Enclosed: Yes  
Contiguous: Yes  
Permitted: Yes  
Wet space: No  
Addition: No  
Conversion: No

**16 Floor 2 - Bath**

---



Dimensions: 5'8" x 8'8"  
Area: 49 sq. ft  
Counted as living area: Yes

Heated: Yes  
Finished: Yes  
Enclosed: Yes  
Contiguous: Yes  
Permitted: Yes  
Wet space: Yes  
Addition: No  
Conversion: No

**17 Floor 2 - Storage**

---

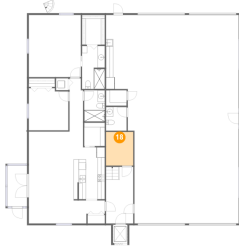


Dimensions: 5'8" x 4'4"  
Area: 24 sq. ft  
Counted as living area: No

Heated: No  
Finished: No  
Enclosed: No  
Contiguous: No  
Permitted: Yes  
Wet space: No  
Addition: No  
Conversion: No

920 East Lake Drive, East Lake, Tarpon Springs,  
Pinellas County, Florida, United States, 34688

**18** Floor 2 - Storage



Dimensions: 7'6" x 9'4"  
Area: 70 sq. ft  
Counted as living area: No

Heated: No  
Finished: No  
Enclosed: No  
Contiguous: No  
Permitted: Yes  
Wet space: No  
Addition: No  
Conversion: No

**19** Floor 2 - Living Room



Dimensions: 15'0" x 14'1"  
Area: 202 sq. ft  
Counted as living area: Yes

Heated: Yes  
Finished: Yes  
Enclosed: Yes  
Contiguous: Yes  
Permitted: Yes  
Wet space: No  
Addition: No  
Conversion: No

**20** Floor 2 - Dining Area

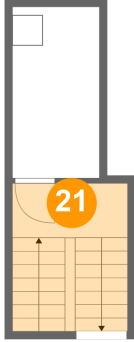


Dimensions: 21'1" x 11'4"  
Area: 187 sq. ft  
Counted as living area: Yes

Heated: Yes  
Finished: Yes  
Enclosed: Yes  
Contiguous: Yes  
Permitted: Yes  
Wet space: No  
Addition: No  
Conversion: No

920 East Lake Drive, East Lake, Tarpon Springs,  
Pinellas County, Florida, United States, 34688

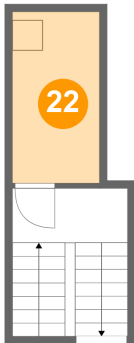
**21** Floor 3 - Hall



Dimensions: 7'6" x 3'7"  
Area: 73 sq. ft  
Counted as living area: No

Heated: Yes  
Finished: Yes  
Enclosed: Yes  
Contiguous: No  
Permitted: Yes  
Wet space: No  
Addition: No  
Conversion: No

**22** Floor 3 - Electrical Room



Dimensions: 5'8" x 11'2"  
Area: 64 sq. ft  
Counted as living area: No

Heated: No  
Finished: Yes  
Enclosed: Yes  
Contiguous: Yes  
Permitted: Yes  
Wet space: No  
Addition: No  
Conversion: No

**23** Floor 4 - Bath

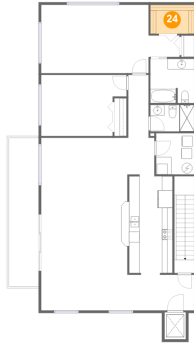


Dimensions: 8'4" x 5'0"  
Area: 42 sq. ft  
Counted as living area: Yes

Heated: Yes  
Finished: Yes  
Enclosed: Yes  
Contiguous: Yes  
Permitted: Yes  
Wet space: Yes  
Addition: No  
Conversion: No

# 920 East Lake Drive, East Lake, Tarpon Springs, Pinellas County, Florida, United States, 34688

## 24 Floor 4 - W.I.C.



Dimensions: 8'4" x 5'5"  
Area: 45 sq. ft  
Counted as living area: Yes

Heated: Yes  
Finished: Yes  
Enclosed: Yes  
Contiguous: Yes  
Permitted: Yes  
Wet space: No  
Addition: No  
Conversion: No

## 25 Floor 4 - Hall



Dimensions: 3'10" x 11'10"  
Area: 45 sq. ft  
Counted as living area: Yes

Heated: Yes  
Finished: Yes  
Enclosed: Yes  
Contiguous: Yes  
Permitted: Yes  
Wet space: No  
Addition: No  
Conversion: No

## 26 Floor 4 - Kitchen



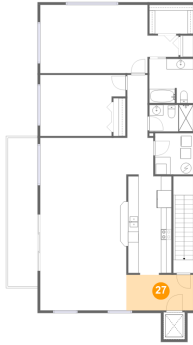
Dimensions: 8'7" x 18'11"  
Area: 160 sq. ft  
Counted as living area: Yes

Heated: Yes  
Finished: Yes  
Enclosed: Yes  
Contiguous: Yes  
Permitted: Yes  
Wet space: No  
Addition: No  
Conversion: No



920 East Lake Drive, East Lake, Tarpon Springs,  
Pinellas County, Florida, United States, 34688

**27** Floor 4 - Hall



Dimensions: 12'8" x 6'9"  
Area: 85 sq. ft  
Counted as living area: Yes

Heated: Yes  
Finished: Yes  
Enclosed: Yes  
Contiguous: Yes  
Permitted: Yes  
Wet space: No  
Addition: No  
Conversion: No

**28** Floor 4 - Primary Bedroom



Dimensions: 26'2" x 12'11"  
Area: 285 sq. ft  
Counted as living area: Yes

Heated: Yes  
Finished: Yes  
Enclosed: Yes  
Contiguous: Yes  
Permitted: Yes  
Wet space: No  
Addition: No  
Conversion: No

**29** Floor 4 - Dining Area

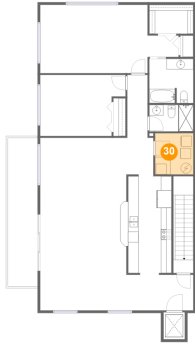


Dimensions: 16'3" x 12'1"  
Area: 197 sq. ft  
Counted as living area: Yes

Heated: Yes  
Finished: Yes  
Enclosed: Yes  
Contiguous: Yes  
Permitted: Yes  
Wet space: No  
Addition: No  
Conversion: No

# 920 East Lake Drive, East Lake, Tarpon Springs, Pinellas County, Florida, United States, 34688

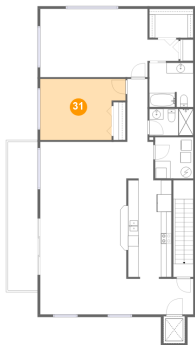
## 30 Floor 4 - Laundry



Dimensions: 7'3" x 7'9"  
Area: 56 sq. ft  
Counted as living area: Yes

Heated: Yes  
Finished: Yes  
Enclosed: Yes  
Contiguous: Yes  
Permitted: Yes  
Wet space: No  
Addition: No  
Conversion: No

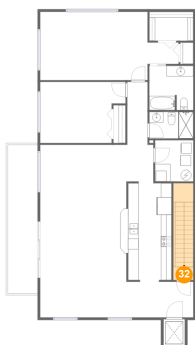
## 31 Floor 4 - Bedroom



Dimensions: 16'1" x 11'6"  
Area: 166 sq. ft  
Counted as living area: Yes

Heated: Yes  
Finished: Yes  
Enclosed: Yes  
Contiguous: Yes  
Permitted: Yes  
Wet space: No  
Addition: No  
Conversion: No

## 32 Floor 4 - Hall

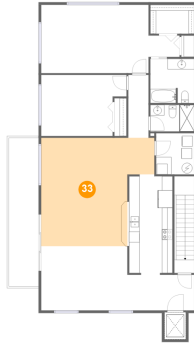


Dimensions: 3'9" x 2'6"  
Area: 69 sq. ft  
Counted as living area: Yes

Heated: Yes  
Finished: Yes  
Enclosed: Yes  
Contiguous: Yes  
Permitted: Yes  
Wet space: No  
Addition: No  
Conversion: No

# 920 East Lake Drive, East Lake, Tarpon Springs, Pinellas County, Florida, United States, 34688

## 33 Floor 4 - Living Room



Dimensions: 21'4" x 20'5"  
Area: 368 sq. ft  
Counted as living area: Yes

Heated: Yes  
Finished: Yes  
Enclosed: Yes  
Contiguous: Yes  
Permitted: Yes  
Wet space: No  
Addition: No  
Conversion: No

## 34 Floor 4 - Balcony



Dimensions: 5'7" x 28'0"  
Area: 157 sq. ft  
Counted as living area: No

Heated: No  
Finished: Yes  
Enclosed: No  
Contiguous: Yes  
Permitted: Yes  
Wet space: No  
Addition: No  
Conversion: No

## 35 Floor 4 - Bath



Dimensions: 8'4" x 8'4"  
Area: 68 sq. ft  
Counted as living area: Yes

Heated: Yes  
Finished: Yes  
Enclosed: Yes  
Contiguous: Yes  
Permitted: Yes  
Wet space: Yes  
Addition: No  
Conversion: No