



250 ERSKINE AVE TH3



Lainey Bonsell & Teresita Link

LTHOME.ca

Bringing your dreams home.

ROYAL LEPAGE
Estate Realty
REALTOR



For more information on

250 ERSKINE AVE TH3



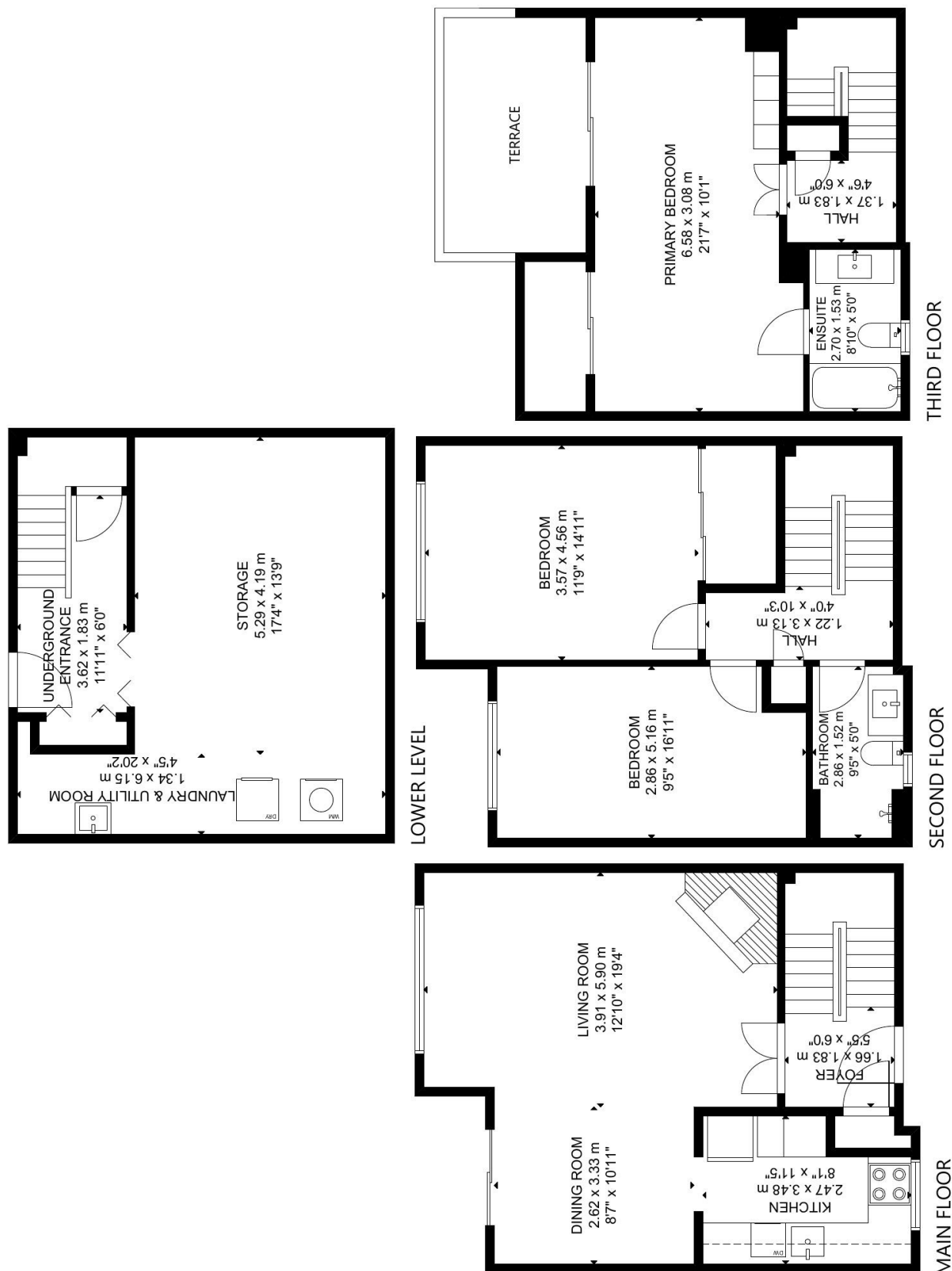
Details: Nestled on the quiet, dead end portion of Erskine Ave in the Mount Pleasant neighbourhood, this spacious 3 storey, 3 bedroom townhome with 2 car parking and beautiful terraced yard checks all the boxes.

With greenery outside every window you will forget that you are just steps from the subway, future LRT and all the shops, restaurants and amenities this uptown community has to offer! One of 9 executive townhomes, rarely offered for sale. Don't miss this chance to be a part of this amazing community.



Visit
www.LTHome.ca





GROSS INTERNAL AREA
 MAIN FLOOR: 48 m²/521 sq ft, SECOND FLOOR: 48 m²/518 sq ft
 THIRD FLOOR: 36 m²/390 sq ft, LOWER LEVEL: 41 m²/439 sq ft
 TOTAL: 173 m²/1,868 sq ft
 SIZE AND DIMENSIONS ARE APPROXIMATE, ACTUAL MAY VARY.

Not intended to solicit buyers or sellers currently under contract with another Brokerage



Lainey Bonsell & Teresita Link

LTHOME.ca

Bringing your dreams home.

Presented by:

Lainey Bonsell, Broker

Royal LePage Estate Realty, Brokerage

Lainey@LTHome.ca

416-690-5100