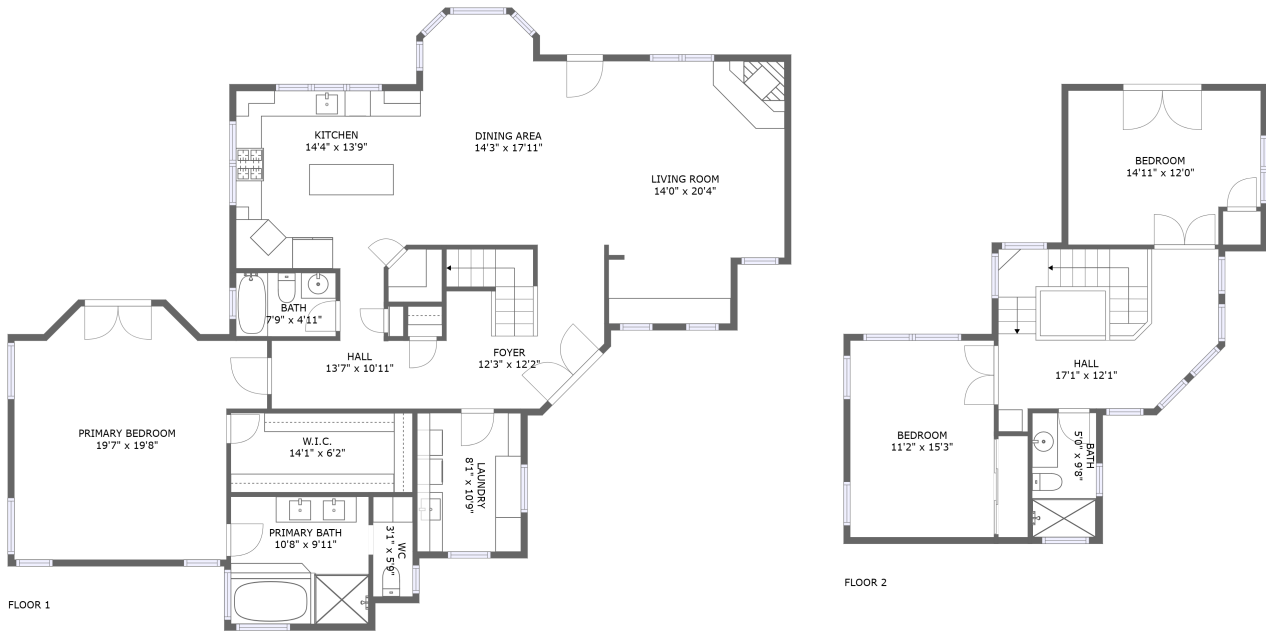



8850 San Gregorio Road, Atascadero, San Luis Obispo County, California, United States, 93422



Property summary


 **0** Garages

 **3** Bedrooms

 **3** Bathrooms

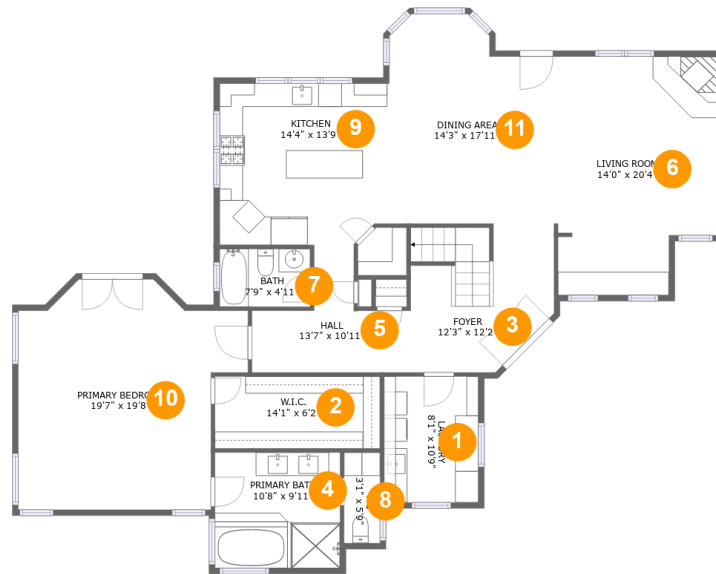
 **0** Half baths

 **2** Floors

 **2,453** Gross living area sqft

 **2,453** Total sqft

8850 San Gregorio Road, Atascadero, San Luis Obispo County, California, United States, 93422



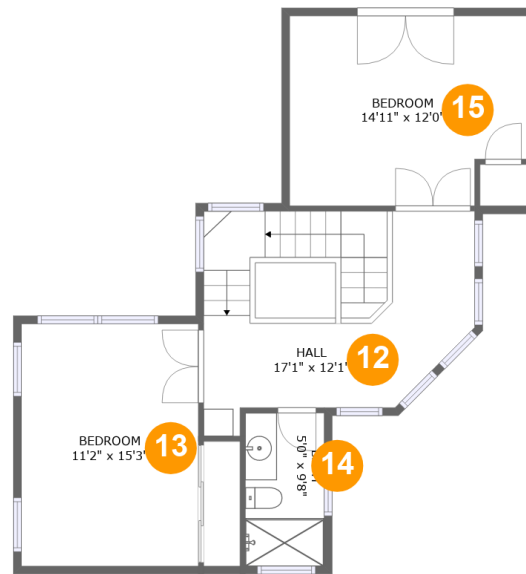
Room dimensions

Floor 1

Total sqft: 1755 Living area: 1755

#		Dimensions	sqft	Counted as living area
1	Laundry	8'1" x 10'9"	87 sq. ft	Yes
2	W.I.C.	14'1" x 6'2"	87 sq. ft	Yes
3	Foyer	12'3" x 12'2"	138 sq. ft	Yes
4	Primary Bath	10'8" x 9'11"	106 sq. ft	Yes
5	Hall	13'7" x 10'11"	91 sq. ft	Yes
6	Living Room	14'0" x 20'4"	261 sq. ft	Yes
7	Bath	7'9" x 4'11"	38 sq. ft	Yes
8	WC	3'1" x 5'9"	24 sq. ft	Yes
9	Kitchen	14'4" x 13'9"	194 sq. ft	Yes
10	Primary Bedroom	19'7" x 19'8"	321 sq. ft	Yes
11	Dining Area	14'3" x 17'11"	231 sq. ft	Yes

**8850 San Gregorio Road, Atascadero, San Luis
Obispo County, California, United States, 93422**



Room dimensions

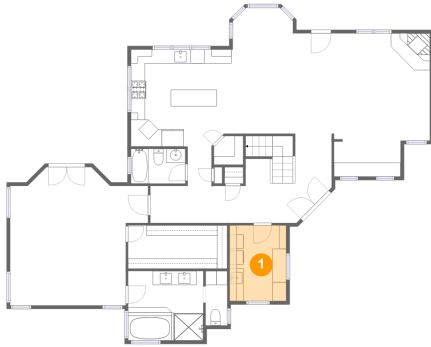
Floor 2

Total sqft: 698 Living area: 698

#		Dimensions	sqft	Counted as living area
12	Hall	17'1" x 12'1"	203 sq. ft	Yes
13	Bedroom	11'2" x 15'3"	170 sq. ft	Yes
14	Bath	5'0" x 9'8"	48 sq. ft	Yes
15	Bedroom	14'11" x 12'0"	169 sq. ft	Yes

8850 San Gregorio Road, Atascadero, San Luis Obispo County, California, United States, 93422

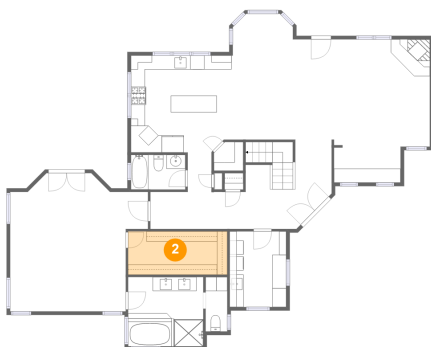
1 Floor 1 - Laundry



Dimensions: 8'1" x 10'9"
Area: 87 sq. ft
Counted as living area: Yes

Heated: Yes
Finished: Yes
Enclosed: Yes
Contiguous: Yes
Permitted: Yes
Wet space: No
Addition: No
Conversion: No

2 Floor 1 - W.I.C.

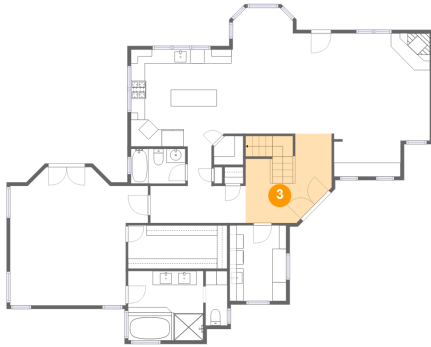


Dimensions: 14'1" x 6'2"
Area: 87 sq. ft
Counted as living area: Yes

Heated: Yes
Finished: Yes
Enclosed: Yes
Contiguous: Yes
Permitted: Yes
Wet space: No
Addition: No
Conversion: No

**8850 San Gregorio Road, Atascadero, San Luis
Obispo County, California, United States, 93422**

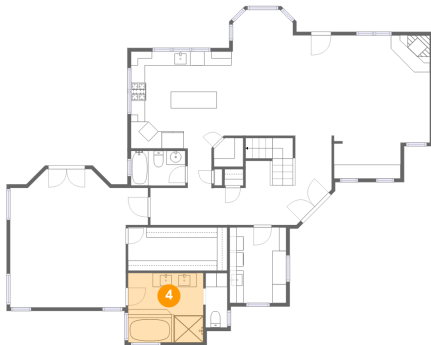
3 Floor 1 - Foyer



Dimensions: 12'3" x 12'2"
Area: 138 sq. ft
Counted as living area: Yes

Heated: Yes
Finished: Yes
Enclosed: Yes
Contiguous: Yes
Permitted: Yes
Wet space: No
Addition: No
Conversion: No

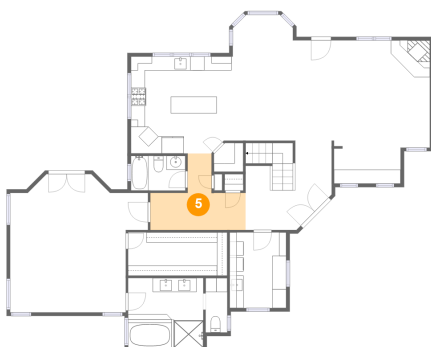
4 Floor 1 - Primary Bath



Dimensions: 10'8" x 9'11"
Area: 106 sq. ft
Counted as living area: Yes

Heated: Yes
Finished: Yes
Enclosed: Yes
Contiguous: Yes
Permitted: Yes
Wet space: Yes
Addition: No
Conversion: No

5 Floor 1 - Hall



Dimensions: 13'7" x 10'11"
Area: 91 sq. ft
Counted as living area: Yes

Heated: Yes
Finished: Yes
Enclosed: Yes
Contiguous: Yes
Permitted: Yes
Wet space: No
Addition: No
Conversion: No

8850 San Gregorio Road, Atascadero, San Luis Obispo County, California, United States, 93422

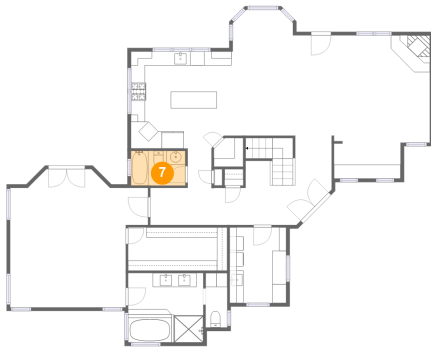
6 Floor 1 - Living Room



Dimensions: 14'0" x 20'4"
Area: 261 sq. ft
Counted as living area: Yes

Heated: Yes
Finished: Yes
Enclosed: Yes
Contiguous: Yes
Permitted: Yes
Wet space: No
Addition: No
Conversion: No

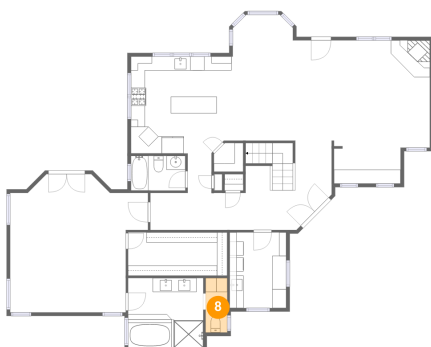
7 Floor 1 - Bath



Dimensions: 7'9" x 4'11"
Area: 38 sq. ft
Counted as living area: Yes

Heated: Yes
Finished: Yes
Enclosed: Yes
Contiguous: Yes
Permitted: Yes
Wet space: Yes
Addition: No
Conversion: No

8 Floor 1 - WC

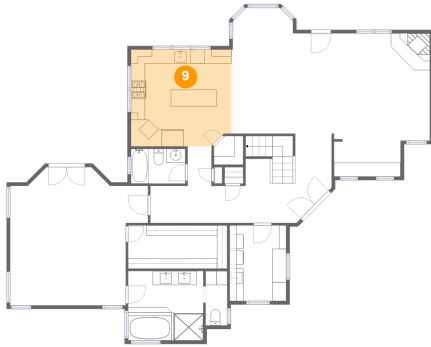


Dimensions: 3'1" x 5'9"
Area: 24 sq. ft
Counted as living area: Yes

Heated: Yes
Finished: Yes
Enclosed: Yes
Contiguous: Yes
Permitted: Yes
Wet space: Yes
Addition: No
Conversion: No

8850 San Gregorio Road, Atascadero, San Luis Obispo County, California, United States, 93422

9 Floor 1 - Kitchen



Dimensions: 14'4" x 13'9"
Area: 194 sq. ft
Counted as living area: Yes

Heated: Yes
Finished: Yes
Enclosed: Yes
Contiguous: Yes
Permitted: Yes
Wet space: No
Addition: No
Conversion: No

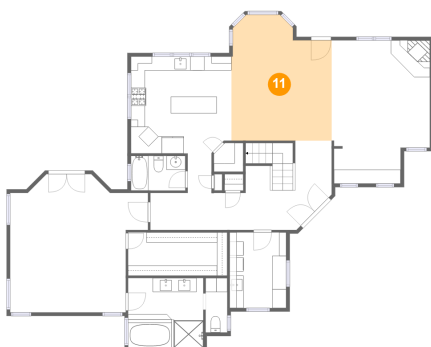
10 Floor 1 - Primary Bedroom



Dimensions: 19'7" x 19'8"
Area: 321 sq. ft
Counted as living area: Yes

Heated: Yes
Finished: Yes
Enclosed: Yes
Contiguous: Yes
Permitted: Yes
Wet space: No
Addition: No
Conversion: No

11 Floor 1 - Dining Area

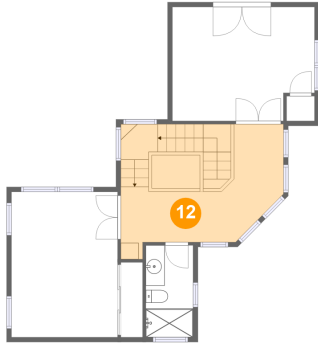


Dimensions: 14'3" x 17'11"
Area: 231 sq. ft
Counted as living area: Yes

Heated: Yes
Finished: Yes
Enclosed: Yes
Contiguous: Yes
Permitted: Yes
Wet space: No
Addition: No
Conversion: No

**8850 San Gregorio Road, Atascadero, San Luis
Obispo County, California, United States, 93422**

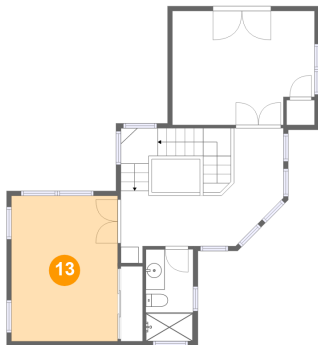
12 Floor 2 - Hall



Dimensions: 17'1" x 12'1"
Area: 203 sq. ft
Counted as living area: Yes

Heated: Yes
Finished: Yes
Enclosed: Yes
Contiguous: Yes
Permitted: Yes
Wet space: No
Addition: No
Conversion: No

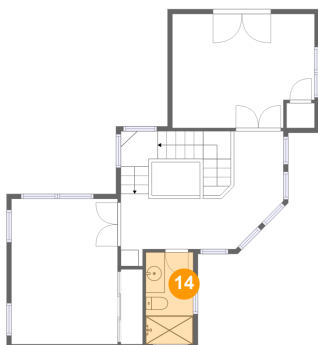
13 Floor 2 - Bedroom



Dimensions: 11'2" x 15'3"
Area: 170 sq. ft
Counted as living area: Yes

Heated: Yes
Finished: Yes
Enclosed: Yes
Contiguous: Yes
Permitted: Yes
Wet space: No
Addition: No
Conversion: No

14 Floor 2 - Bath

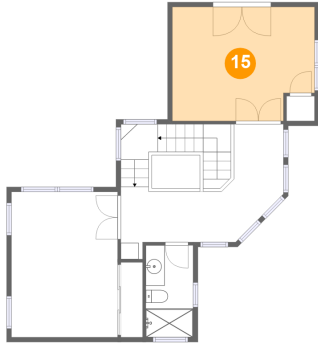


Dimensions: 5'0" x 9'8"
Area: 48 sq. ft
Counted as living area: Yes

Heated: Yes
Finished: Yes
Enclosed: Yes
Contiguous: Yes
Permitted: Yes
Wet space: Yes
Addition: No
Conversion: No

**8850 San Gregorio Road, Atascadero, San Luis
Obispo County, California, United States, 93422**

15 Floor 2 - Bedroom



Dimensions: 14'11" x 12'0"
Area: 169 sq. ft
Counted as living area: Yes

Heated: Yes
Finished: Yes
Enclosed: Yes
Contiguous: Yes
Permitted: Yes
Wet space: No
Addition: No
Conversion: No