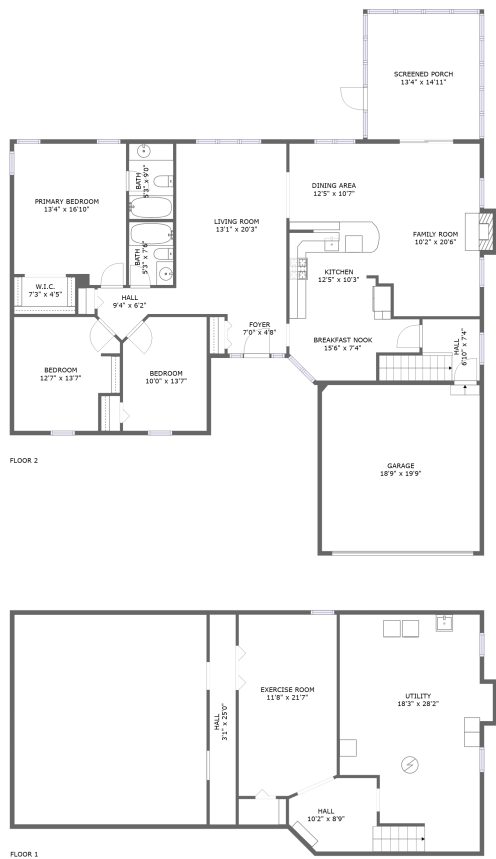


Home report

1707 Deer Run Drive, Seasons Ridge, Montgomery, Kendall County, Illinois, United States, 60538



Total Area: 1659 sq. ft

Below Ground: 383 sq. ft, Floor 2: 1659 sq. ft

Excluded: Crawl space 579 sq. ft, Utility 415 sq. ft, Hall 79 sq. ft, Garage 371 sq. ft, Screened porch 200 sq. ft, Fireplace 9 sq. ft, Walls: 227 sq. ft

Property summary

 **2** Floors

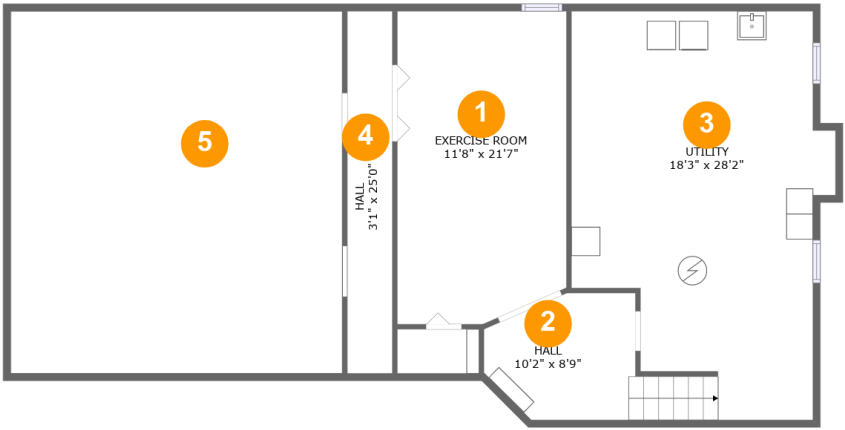
 **3** Bedrooms

 **2** Bathrooms

 **1** Garages

Home report

1707 Deer Run Drive, Seasons Ridge, Montgomery, Kendall
County, Illinois, United States, 60538



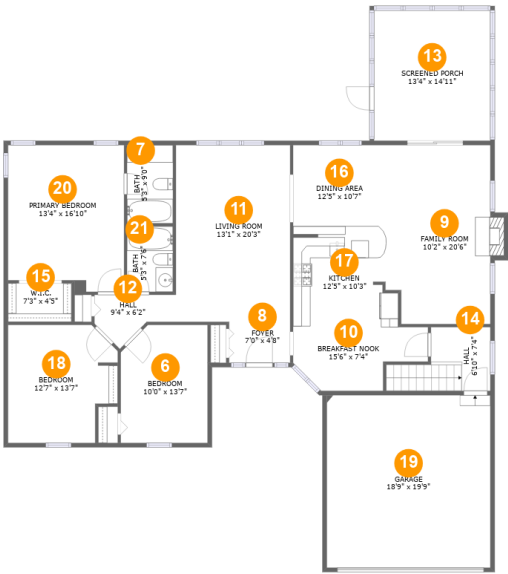
Room dimensions

Floor 1 Below ground Total:383sqft Excluded: 1073sqft

#		Max Dimensions	sqft	Included
1	Exercise Room	11'8" x 21'7"	245 sq. ft	Yes
2	Hall	10'2" x 8'9"	96 sq. ft	Yes
3	Utility	18'3" x 28'2"	415 sq. ft	No
4	Hall	3'1" x 25'0"	79 sq. ft	No
5	Crawl Space	22'11" x 24'11"	572 sq. ft	No

Home report

1707 Deer Run Drive, Seasons Ridge, Montgomery, Kendall County, Illinois, United States, 60538



Room dimensions

Floor 2 Total:1659sqft Excluded: 580sqft

#		Max Dimensions	sqft	Included
6	Bedroom	10'0" x 13'7"	130 sq. ft	Yes
7	Bath	5'3" x 9'0"	47 sq. ft	Yes
8	Foyer	7'0" x 4'8"	33 sq. ft	Yes
9	Family Room	10'2" x 20'6"	209 sq. ft	Yes
10	Breakfast Nook	15'6" x 7'4"	91 sq. ft	Yes
11	Living Room	13'1" x 20'3"	266 sq. ft	Yes
12	Hall	9'4" x 6'2"	39 sq. ft	Yes
13	Screened Porch	13'4" x 14'11"	200 sq. ft	No
14	Hall	6'10" x 7'4"	65 sq. ft	Yes
15	W.I.C.	7'3" x 4'5"	32 sq. ft	Yes
16	Dining Area	12'5" x 10'7"	131 sq. ft	Yes

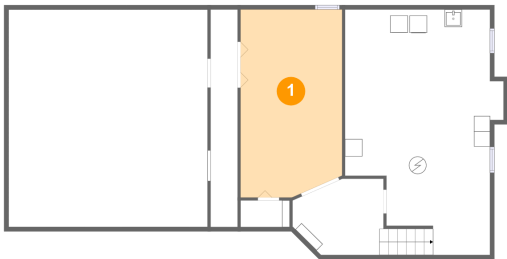
Home report

**1707 Deer Run Drive, Seasons Ridge, Montgomery, Kendall
County, Illinois, United States, 60538**

#		Max Dimensions	sqft	Included
17	Kitchen	12'5" x 10'3"	125 sq. ft	Yes
18	Bedroom	12'7" x 13'7"	154 sq. ft	Yes
19	Garage	18'9" x 19'9"	371 sq. ft	No
20	Primary Bedroom	13'4" x 16'10"	214 sq. ft	Yes
21	Bath	5'3" x 7'6"	40 sq. ft	Yes

1707 Deer Run Drive, Seasons Ridge, Montgomery, Kendall
County, Illinois, United States, 60538

1 Floor 1 - Exercise Room



Max Dimensions: 11'8" x 21'7"
Calculated Area: 245 sq. ft
Included: Yes

Heated: Yes
Finished: Yes
Enclosed: Yes
Contiguous: Yes
Permitted: Yes
Wet space: No
Addition: No
Conversion: No

2 Floor 1 - Hall

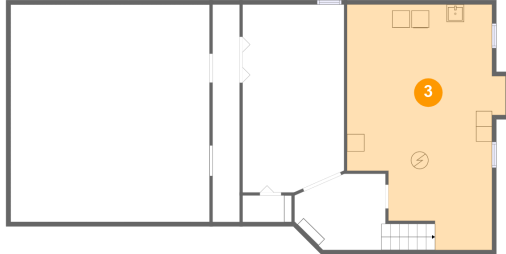


Max Dimensions: 10'2" x 8'9"
Calculated Area: 96 sq. ft
Included: Yes

Heated: Yes
Finished: Yes
Enclosed: Yes
Contiguous: Yes
Permitted: Yes
Wet space: No
Addition: No
Conversion: No

1707 Deer Run Drive, Seasons Ridge, Montgomery, Kendall
County, Illinois, United States, 60538

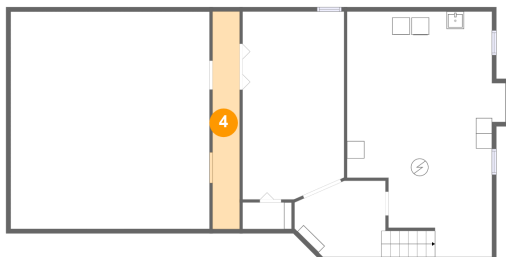
3 Floor 1 - Utility



Max Dimensions: 18'3" x 28'2"
Calculated Area: 415 sq. ft
Included: No

Heated: Yes
Finished: No
Enclosed: Yes
Contiguous: Yes
Permitted: Yes
Wet space: No
Addition: No
Conversion: No

4 Floor 1 - Hall



Max Dimensions: 3'1" x 25'0"
Calculated Area: 79 sq. ft
Included: No

Heated: Yes
Finished: No
Enclosed: Yes
Contiguous: Yes
Permitted: Yes
Wet space: No
Addition: No
Conversion: No

5 Floor 1 - Crawl Space

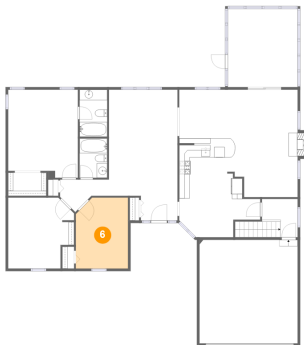


Max Dimensions: 22'11" x 24'11"
Calculated Area: 572 sq. ft
Included: No

Heated: No
Finished: No
Enclosed: No
Contiguous: Yes
Permitted: No
Wet space: No
Addition: No
Conversion: No

1707 Deer Run Drive, Seasons Ridge, Montgomery, Kendall
County, Illinois, United States, 60538

6 Floor 2 - Bedroom



Max Dimensions: 10'0" x 13'7"
Calculated Area: 130 sq. ft
Included: Yes

Heated: Yes
Finished: Yes
Enclosed: Yes
Contiguous: Yes
Permitted: Yes
Wet space: No
Addition: No
Conversion: No

7 Floor 2 - Bath



Max Dimensions: 5'3" x 9'0"
Calculated Area: 47 sq. ft
Included: Yes

Heated: Yes
Finished: Yes
Enclosed: Yes
Contiguous: Yes
Permitted: Yes
Wet space: Yes
Addition: No
Conversion: No

8 Floor 2 - Foyer



Max Dimensions: 7'0" x 4'8"
Calculated Area: 33 sq. ft
Included: Yes

Heated: Yes
Finished: Yes
Enclosed: Yes
Contiguous: Yes
Permitted: Yes
Wet space: No
Addition: No
Conversion: No

1707 Deer Run Drive, Seasons Ridge, Montgomery, Kendall
County, Illinois, United States, 60538

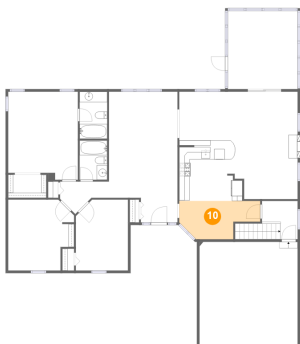
9 Floor 2 - Family Room



Max Dimensions: 10'2" x 20'6"
Calculated Area: 209 sq. ft
Included: Yes

Heated: Yes
Finished: Yes
Enclosed: Yes
Contiguous: Yes
Permitted: Yes
Wet space: No
Addition: No
Conversion: No

10 Floor 2 - Breakfast Nook



Max Dimensions: 15'6" x 7'4"
Calculated Area: 91 sq. ft
Included: Yes

Heated: Yes
Finished: Yes
Enclosed: Yes
Contiguous: Yes
Permitted: Yes
Wet space: No
Addition: No
Conversion: No

11 Floor 2 - Living Room



Max Dimensions: 13'1" x 20'3"
Calculated Area: 266 sq. ft
Included: Yes

Heated: Yes
Finished: Yes
Enclosed: Yes
Contiguous: Yes
Permitted: Yes
Wet space: No
Addition: No
Conversion: No

1707 Deer Run Drive, Seasons Ridge, Montgomery, Kendall
County, Illinois, United States, 60538

12 Floor 2 - Hall



Max Dimensions: 9'4" x 6'2"
Calculated Area: 39 sq. ft
Included: Yes

Heated: Yes
Finished: Yes
Enclosed: Yes
Contiguous: Yes
Permitted: Yes
Wet space: No
Addition: No
Conversion: No

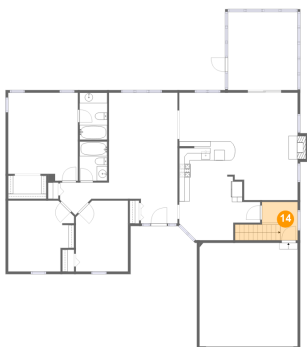
13 Floor 2 - Screened Porch



Max Dimensions: 13'4" x 14'11"
Calculated Area: 200 sq. ft
Included: No

Heated: No
Finished: Yes
Enclosed: No
Contiguous: Yes
Permitted: Yes
Wet space: No
Addition: No
Conversion: No

14 Floor 2 - Hall



Max Dimensions: 6'10" x 7'4"
Calculated Area: 65 sq. ft
Included: Yes

Heated: Yes
Finished: Yes
Enclosed: Yes
Contiguous: Yes
Permitted: Yes
Wet space: No
Addition: No
Conversion: No

1707 Deer Run Drive, Seasons Ridge, Montgomery, Kendall
County, Illinois, United States, 60538

15 Floor 2 - W.I.C.



Max Dimensions: 7'3" x 4'5"
Calculated Area: 32 sq. ft
Included: Yes

Heated: Yes
Finished: Yes
Enclosed: Yes
Contiguous: Yes
Permitted: Yes
Wet space: No
Addition: No
Conversion: No

16 Floor 2 - Dining Area



Max Dimensions: 12'5" x 10'7"
Calculated Area: 131 sq. ft
Included: Yes

Heated: Yes
Finished: Yes
Enclosed: Yes
Contiguous: Yes
Permitted: Yes
Wet space: No
Addition: No
Conversion: No

17 Floor 2 - Kitchen



Max Dimensions: 12'5" x 10'3"
Calculated Area: 125 sq. ft
Included: Yes

Heated: Yes
Finished: Yes
Enclosed: Yes
Contiguous: Yes
Permitted: Yes
Wet space: No
Addition: No
Conversion: No

1707 Deer Run Drive, Seasons Ridge, Montgomery, Kendall
County, Illinois, United States, 60538

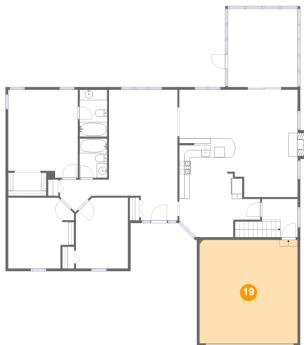
18 Floor 2 - Bedroom



Max Dimensions: 12'7" x 13'7"
Calculated Area: 154 sq. ft
Included: Yes

Heated: Yes
Finished: Yes
Enclosed: Yes
Contiguous: Yes
Permitted: Yes
Wet space: No
Addition: No
Conversion: No

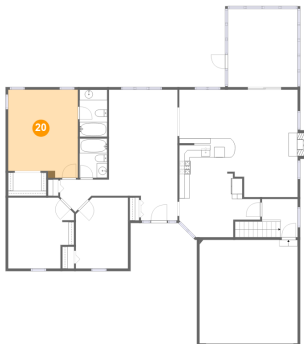
19 Floor 2 - Garage



Max Dimensions: 18'9" x 19'9"
Calculated Area: 371 sq. ft
Included: No

Heated: No
Finished: No
Enclosed: Yes
Contiguous: Yes
Permitted: Yes
Wet space: No
Addition: No
Conversion: No

20 Floor 2 - Primary Bedroom



Max Dimensions: 13'4" x 16'10"
Calculated Area: 214 sq. ft
Included: Yes

Heated: Yes
Finished: Yes
Enclosed: Yes
Contiguous: Yes
Permitted: Yes
Wet space: No
Addition: No
Conversion: No

1707 Deer Run Drive, Seasons Ridge, Montgomery, Kendall
County, Illinois, United States, 60538

21 Floor 2 - Bath



Max Dimensions: 5'3" x 7'6"
Calculated Area: 40 sq. ft
Included: Yes

Heated: Yes
Finished: Yes
Enclosed: Yes
Contiguous: Yes
Permitted: Yes
Wet space: Yes
Addition: No
Conversion: No