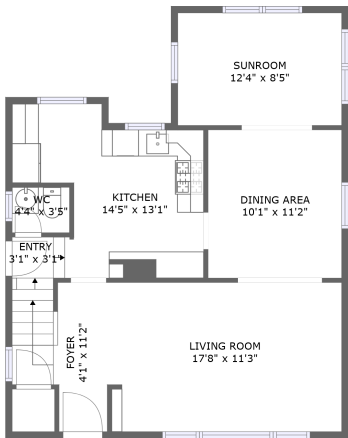
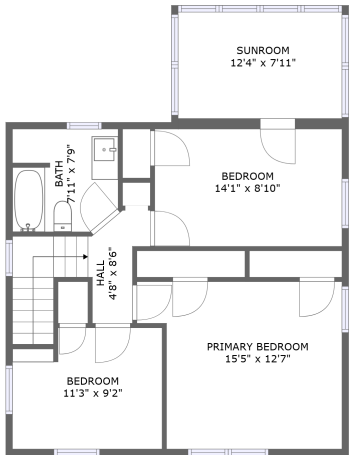


Home report

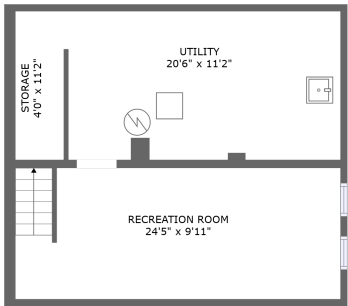
17319 Invermere Avenue, Lee-Harvard, Cleveland, Cuyahoga County, Ohio, United States, 44128



FLOOR 2



FLOOR 3



FLOOR 1


Total Area: 1389 sq. ft

Below Ground: 260 sq. ft, Floor 2: 684 sq. ft, Floor 3: 705 sq. ft

Excluded: Utility 232 sq. ft, Storage 45 sq. ft, Walls: 166 sq. ft

Property summary

 **3**
Floors

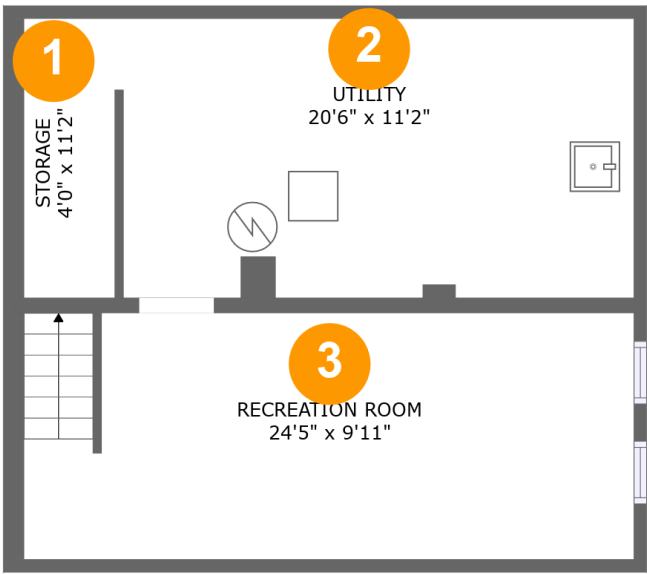
 **3**
Bedrooms

 **1**
Bathrooms

 **1**
Half baths

Home report

17319 Invermere Avenue, Lee-Harvard, Cleveland, Cuyahoga County, Ohio, United States, 44128



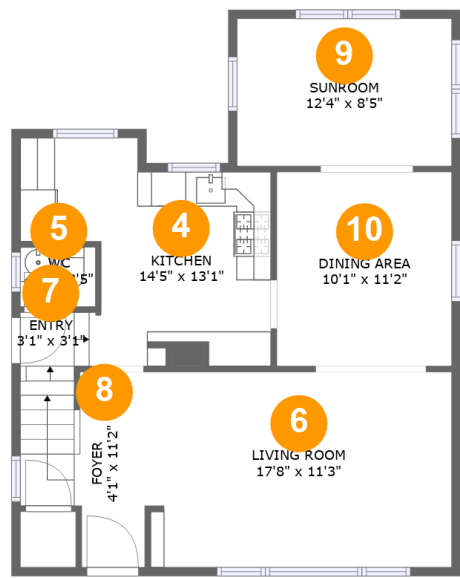
Room dimensions

Floor 1 Below ground Total:260sqft Excluded: 277sqft

#		Max Dimensions	sqft	Included
1	Storage	4'0" x 11'2"	45 sq. ft	No
2	Utility	20'6" x 11'2"	229 sq. ft	No
3	Recreation Room	24'5" x 9'11"	243 sq. ft	Yes

Home report

17319 Invermere Avenue, Lee-Harvard, Cleveland, Cuyahoga County, Ohio, United States, 44128



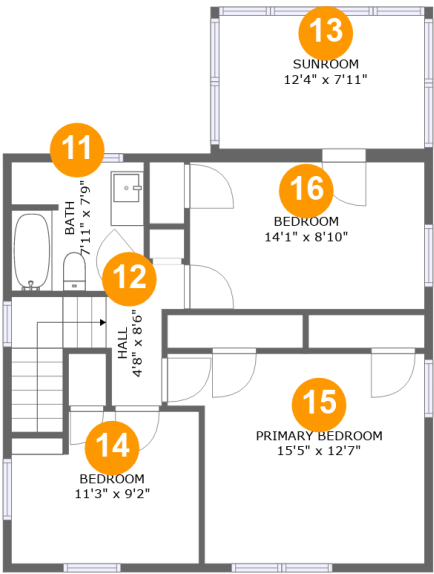
Room dimensions

Floor 2 Total:684sqft Excluded: 0sqft

#		Max Dimensions	sqft	Included
4	Kitchen	14'5" x 13'1"	142 sq. ft	Yes
5	WC	4'4" x 3'5"	15 sq. ft	Yes
6	Living Room	17'8" x 11'3"	196 sq. ft	Yes
7	Entry	3'1" x 3'1"	12 sq. ft	Yes
8	Foyer	4'1" x 11'2"	65 sq. ft	Yes
9	Sunroom	12'4" x 8'5"	104 sq. ft	Yes
10	Dining Area	10'1" x 11'2"	112 sq. ft	Yes

Home report

17319 Invermere Avenue, Lee-Harvard, Cleveland, Cuyahoga County, Ohio, United States, 44128



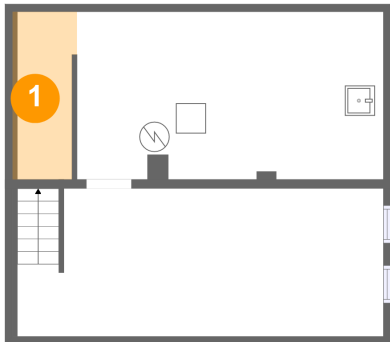
Room dimensions

Floor 3 Total:705sqft Excluded: 0sqft

#		Max Dimensions	sqft	Included
11	Bath	7'11" x 7'9"	59 sq. ft	Yes
12	Hall	4'8" x 8'6"	61 sq. ft	Yes
13	Sunroom	12'4" x 7'11"	99 sq. ft	Yes
14	Bedroom	11'3" x 9'2"	97 sq. ft	Yes
15	Primary Bedroom	15'5" x 12'7"	173 sq. ft	Yes
16	Bedroom	14'1" x 8'10"	124 sq. ft	Yes

17319 Invermere Avenue, Lee-Harvard, Cleveland, Cuyahoga County, Ohio, United States, 44128

1 Floor 1 - Storage



Max Dimensions: 4'0" x 11'2"
Calculated Area: 45 sq. ft
Included: No

Heated: No
Finished: No
Enclosed: No
Contiguous: Yes
Permitted: Yes
Wet space: No
Addition: No
Conversion: No

2 Floor 1 - Utility

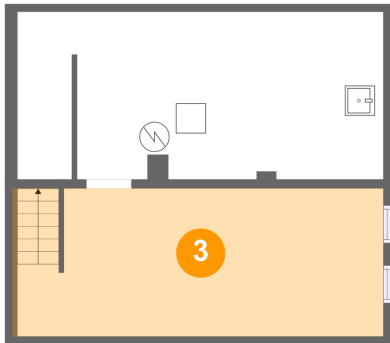


Max Dimensions: 20'6" x 11'2"
Calculated Area: 229 sq. ft
Included: No

Heated: Yes
Finished: No
Enclosed: Yes
Contiguous: Yes
Permitted: Yes
Wet space: No
Addition: No
Conversion: No

17319 Invermere Avenue, Lee-Harvard, Cleveland, Cuyahoga County, Ohio, United States, 44128

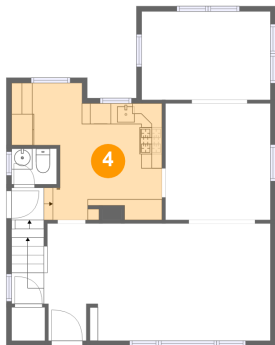
3 Floor 1 - Recreation Room



Max Dimensions: 24'5" x 9'11"
Calculated Area: 243 sq. ft
Included: No

Heated: Yes
Finished: Yes
Enclosed: Yes
Contiguous: No
Permitted: Yes
Wet space: No
Addition: No
Conversion: No

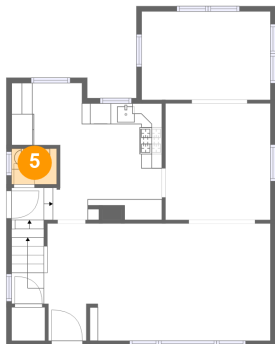
4 Floor 2 - Kitchen



Max Dimensions: 14'5" x 13'1"
Calculated Area: 142 sq. ft
Included: Yes

Heated: Yes
Finished: Yes
Enclosed: Yes
Contiguous: Yes
Permitted: Yes
Wet space: No
Addition: No
Conversion: No

5 Floor 2 - WC

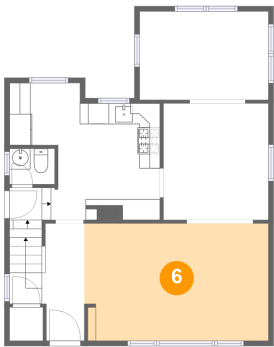


Max Dimensions: 4'4" x 3'5"
Calculated Area: 15 sq. ft
Included: Yes

Heated: Yes
Finished: Yes
Enclosed: Yes
Contiguous: Yes
Permitted: Yes
Wet space: Yes
Addition: No
Conversion: No

17319 Invermere Avenue, Lee-Harvard, Cleveland, Cuyahoga County, Ohio, United States, 44128

6 Floor 2 - Living Room



Max Dimensions: 17'8" x 11'3"
Calculated Area: 196 sq. ft
Included: Yes

Heated: Yes
Finished: Yes
Enclosed: Yes
Contiguous: Yes
Permitted: Yes
Wet space: No
Addition: No
Conversion: No

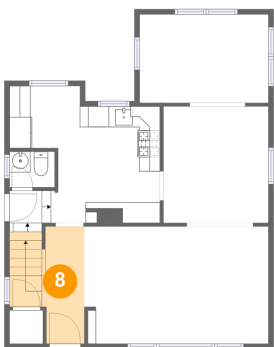
7 Floor 2 - Entry



Max Dimensions: 3'1" x 3'1"
Calculated Area: 12 sq. ft
Included: Yes

Heated: Yes
Finished: Yes
Enclosed: Yes
Contiguous: Yes
Permitted: Yes
Wet space: No
Addition: No
Conversion: No

8 Floor 2 - Foyer



Max Dimensions: 4'1" x 11'2"
Calculated Area: 65 sq. ft
Included: Yes

Heated: Yes
Finished: Yes
Enclosed: Yes
Contiguous: Yes
Permitted: Yes
Wet space: No
Addition: No
Conversion: No

17319 Invermere Avenue, Lee-Harvard, Cleveland, Cuyahoga County, Ohio, United States, 44128

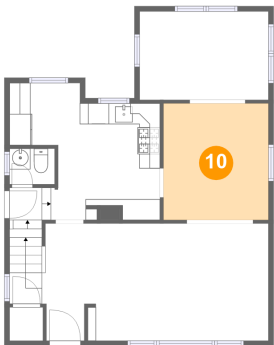
9 Floor 2 - Sunroom



Max Dimensions: 12'4" x 8'5"
Calculated Area: 104 sq. ft
Included: Yes

Heated: Yes
Finished: Yes
Enclosed: Yes
Contiguous: Yes
Permitted: Yes
Wet space: No
Addition: No
Conversion: No

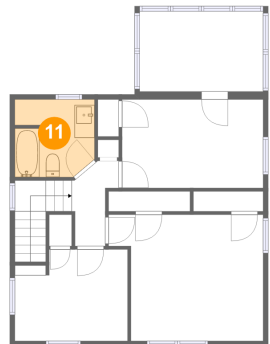
10 Floor 2 - Dining Area



Max Dimensions: 10'1" x 11'2"
Calculated Area: 112 sq. ft
Included: Yes

Heated: Yes
Finished: Yes
Enclosed: Yes
Contiguous: Yes
Permitted: Yes
Wet space: No
Addition: No
Conversion: No

11 Floor 3 - Bath

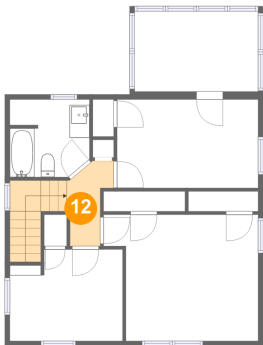


Max Dimensions: 7'11" x 7'9"
Calculated Area: 59 sq. ft
Included: Yes

Heated: Yes
Finished: Yes
Enclosed: Yes
Contiguous: Yes
Permitted: Yes
Wet space: Yes
Addition: No
Conversion: No

17319 Invermere Avenue, Lee-Harvard, Cleveland, Cuyahoga County, Ohio, United States, 44128

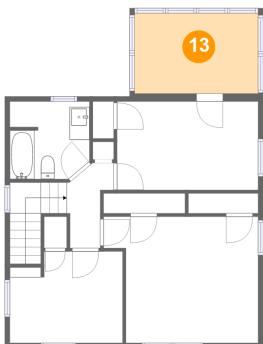
12 Floor 3 - Hall



Max Dimensions: 4'8" x 8'6"
Calculated Area: 61 sq. ft
Included: Yes

Heated: Yes
Finished: Yes
Enclosed: Yes
Contiguous: Yes
Permitted: Yes
Wet space: No
Addition: No
Conversion: No

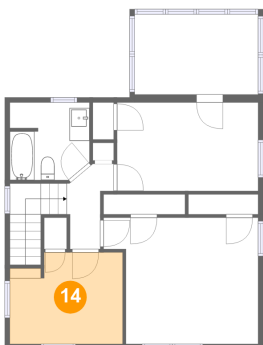
13 Floor 3 - Sunroom



Max Dimensions: 12'4" x 7'11"
Calculated Area: 99 sq. ft
Included: Yes

Heated: Yes
Finished: Yes
Enclosed: Yes
Contiguous: Yes
Permitted: Yes
Wet space: No
Addition: No
Conversion: No

14 Floor 3 - Bedroom

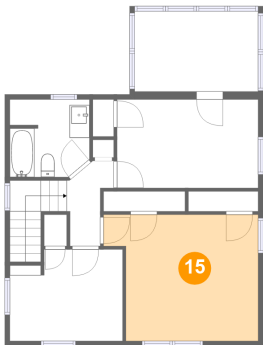


Max Dimensions: 11'3" x 9'2"
Calculated Area: 97 sq. ft
Included: Yes

Heated: Yes
Finished: Yes
Enclosed: Yes
Contiguous: Yes
Permitted: Yes
Wet space: No
Addition: No
Conversion: No

17319 Invermere Avenue, Lee-Harvard, Cleveland, Cuyahoga County, Ohio, United States, 44128

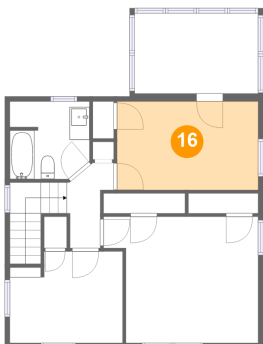
15 Floor 3 - Primary Bedroom



Max Dimensions: 15'5" x 12'7"
Calculated Area: 173 sq. ft
Included: Yes

Heated: Yes
Finished: Yes
Enclosed: Yes
Contiguous: Yes
Permitted: Yes
Wet space: No
Addition: No
Conversion: No

16 Floor 3 - Bedroom



Max Dimensions: 14'1" x 8'10"
Calculated Area: 124 sq. ft
Included: Yes

Heated: Yes
Finished: Yes
Enclosed: Yes
Contiguous: Yes
Permitted: Yes
Wet space: No
Addition: No
Conversion: No