




5535 Blackwell Street, Historic Bartlett, Bartlett,  
Shelby County, Tennessee, United States, 38134





Property summary


**0**  
Garages


**3**  
Bedrooms

**2**  
Bathrooms

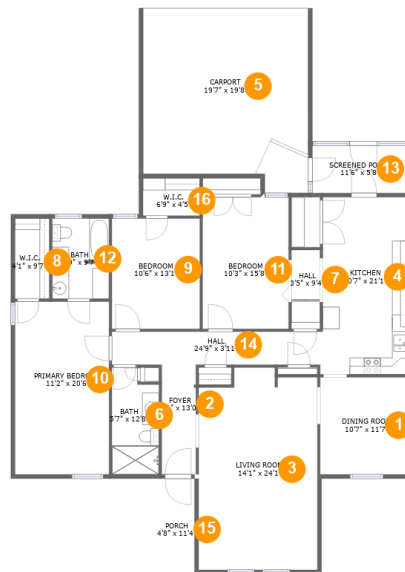
**0**  
Half baths

**1**  
Floors

**1,791**  
Gross living  
area sqft

**2,338**  
Total sqft

## Room dimensions



**Total sqft: 2338    Living area: 1791**

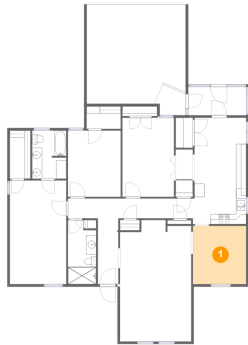
#		Dimensions	sqft	Counted as living area
1	Dining Room	10'7" x 11'7"	122 sq. ft	Yes
2	Foyer	4'1" x 13'0"	53 sq. ft	Yes
3	Living Room	14'1" x 24'1"	323 sq. ft	Yes
4	Kitchen	10'7" x 21'1"	217 sq. ft	Yes
5	Carport	19'7" x 19'8"	400 sq. ft	No
6	Bath	5'7" x 12'8"	66 sq. ft	Yes
7	Hall	3'5" x 9'4"	32 sq. ft	Yes
8	W.I.C.	4'1" x 9'7"	39 sq. ft	Yes
9	Bedroom	10'6" x 13'1"	137 sq. ft	Yes
10	Primary Bedroom	11'2" x 20'6"	230 sq. ft	Yes
11	Bedroom	10'3" x 15'8"	160 sq. ft	Yes

**5535 Blackwell Street, Historic Bartlett, Bartlett,  
Shelby County, Tennessee, United States, 38134**

#		Dimensions	sqft	Counted as living area
12	Bath	6'9" x 9'7"	64 sq. ft	Yes
13	Screened Porch	11'6" x 5'8"	65 sq. ft	No
14	Hall	24'9" x 3'11"	98 sq. ft	Yes
15	Porch	4'8" x 11'4"	53 sq. ft	No
16	W.I.C.	6'9" x 4'5"	30 sq. ft	Yes

**5535 Blackwell Street, Historic Bartlett, Bartlett,  
Shelby County, Tennessee, United States, 38134**

## 1 Floor 1 - Dining Room



**Dimensions:** 10'7" x 11'7"  
**Area:** 122 sq. ft  
**Counted as living area:** Yes

**Heated:** Yes  
**Finished:** Yes  
**Enclosed:** Yes  
**Contiguous:** Yes  
**Permitted:** Yes  
**Wet space:** No  
**Addition:** No  
**Conversion:** No

## 2 Floor 1 - Foyer

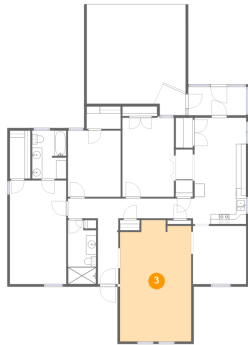


**Dimensions:** 4'1" x 13'0"  
**Area:** 53 sq. ft  
**Counted as living area:** Yes

**Heated:** Yes  
**Finished:** Yes  
**Enclosed:** Yes  
**Contiguous:** Yes  
**Permitted:** Yes  
**Wet space:** No  
**Addition:** No  
**Conversion:** No

**5535 Blackwell Street, Historic Bartlett, Bartlett,  
Shelby County, Tennessee, United States, 38134**

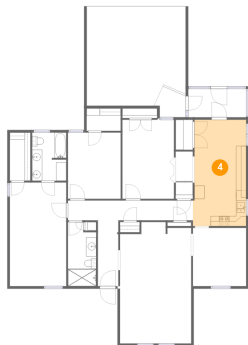
### 3 Floor 1 - Living Room



Dimensions: 14'1" x 24'1"  
Area: 323 sq. ft  
Counted as living area: Yes

Heated: Yes  
Finished: Yes  
Enclosed: Yes  
Contiguous: Yes  
Permitted: Yes  
Wet space: No  
Addition: No  
Conversion: No

### 4 Floor 1 - Kitchen



Dimensions: 10'7" x 21'1"  
Area: 217 sq. ft  
Counted as living area: Yes

Heated: Yes  
Finished: Yes  
Enclosed: Yes  
Contiguous: Yes  
Permitted: Yes  
Wet space: No  
Addition: No  
Conversion: No

### 5 Floor 1 - Carport

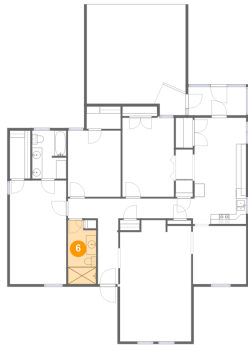


Dimensions: 19'7" x 19'8"  
Area: 400 sq. ft  
Counted as living area: No

Heated: No  
Finished: Yes  
Enclosed: No  
Contiguous: Yes  
Permitted: Yes  
Wet space: No  
Addition: No  
Conversion: No

**5535 Blackwell Street, Historic Bartlett, Bartlett,  
Shelby County, Tennessee, United States, 38134**

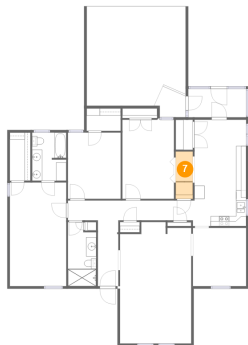
## **6 Floor 1 - Bath**



Dimensions: 5'7" x 12'8"  
Area: 66 sq. ft  
Counted as living area: Yes

Heated: Yes  
Finished: Yes  
Enclosed: Yes  
Contiguous: Yes  
Permitted: Yes  
Wet space: Yes  
Addition: No  
Conversion: No

## **7 Floor 1 - Hall**



Dimensions: 3'5" x 9'4"  
Area: 32 sq. ft  
Counted as living area: Yes

Heated: Yes  
Finished: Yes  
Enclosed: Yes  
Contiguous: Yes  
Permitted: Yes  
Wet space: No  
Addition: No  
Conversion: No

## **8 Floor 1 - W.I.C.**



Dimensions: 4'1" x 9'7"  
Area: 39 sq. ft  
Counted as living area: Yes

Heated: Yes  
Finished: Yes  
Enclosed: Yes  
Contiguous: Yes  
Permitted: Yes  
Wet space: No  
Addition: No  
Conversion: No

**5535 Blackwell Street, Historic Bartlett, Bartlett,  
Shelby County, Tennessee, United States, 38134**

### 9 Floor 1 - Bedroom



Dimensions: 10'6" x 13'1"  
Area: 137 sq. ft  
Counted as living area: Yes

Heated: Yes  
Finished: Yes  
Enclosed: Yes  
Contiguous: Yes  
Permitted: Yes  
Wet space: No  
Addition: No  
Conversion: No

### 10 Floor 1 - Primary Bedroom



Dimensions: 11'2" x 20'6"  
Area: 230 sq. ft  
Counted as living area: Yes

Heated: Yes  
Finished: Yes  
Enclosed: Yes  
Contiguous: Yes  
Permitted: Yes  
Wet space: No  
Addition: No  
Conversion: No

### 11 Floor 1 - Bedroom



Dimensions: 10'3" x 15'8"  
Area: 160 sq. ft  
Counted as living area: Yes

Heated: Yes  
Finished: Yes  
Enclosed: Yes  
Contiguous: Yes  
Permitted: Yes  
Wet space: No  
Addition: No  
Conversion: No

**5535 Blackwell Street, Historic Bartlett, Bartlett,  
Shelby County, Tennessee, United States, 38134**

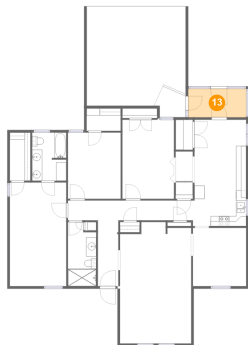
## **12** Floor 1 - Bath



Dimensions: 6'9" x 9'7"  
Area: 64 sq. ft  
Counted as living area: Yes

Heated: Yes  
Finished: Yes  
Enclosed: Yes  
Contiguous: Yes  
Permitted: Yes  
Wet space: Yes  
Addition: No  
Conversion: No

## **13** Floor 1 - Screened Porch



Dimensions: 11'6" x 5'8"  
Area: 65 sq. ft  
Counted as living area: No

Heated: No  
Finished: Yes  
Enclosed: No  
Contiguous: Yes  
Permitted: Yes  
Wet space: No  
Addition: No  
Conversion: No

## **14** Floor 1 - Hall



Dimensions: 24'9" x 3'11"  
Area: 98 sq. ft  
Counted as living area: Yes

Heated: Yes  
Finished: Yes  
Enclosed: Yes  
Contiguous: Yes  
Permitted: Yes  
Wet space: No  
Addition: No  
Conversion: No



**5535 Blackwell Street, Historic Bartlett, Bartlett,  
Shelby County, Tennessee, United States, 38134**

## **15** Floor 1 - Porch



**Dimensions:** 4'8" x 11'4"  
**Area:** 53 sq. ft  
**Counted as living area:** No

**Heated:** No  
**Finished:** Yes  
**Enclosed:** No  
**Contiguous:** Yes  
**Permitted:** Yes  
**Wet space:** No  
**Addition:** No  
**Conversion:** No

## **16** Floor 1 - W.I.C.



**Dimensions:** 6'9" x 4'5"  
**Area:** 30 sq. ft  
**Counted as living area:** Yes

**Heated:** Yes  
**Finished:** Yes  
**Enclosed:** Yes  
**Contiguous:** Yes  
**Permitted:** Yes  
**Wet space:** No  
**Addition:** No  
**Conversion:** No