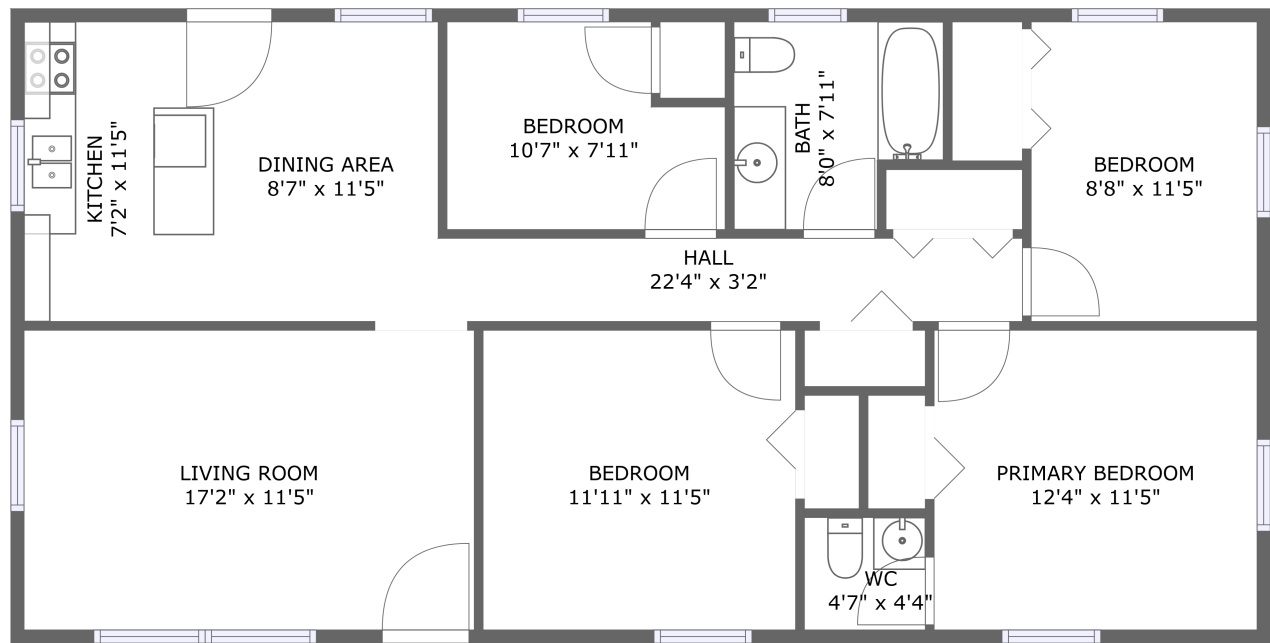


Home report

15802 Allen Drive, Stony Springs, Dinwiddie, Dinwiddie County,
Virginia, United States, 23841, 15802 Allen Dr, Dinwiddie, VA,



FLOOR 1

Total Area: 1094 sq. ft

Floor 1: 1094 sq. ft

Excluded: Walls: 71 sq. ft

Property summary

 **1** Floors

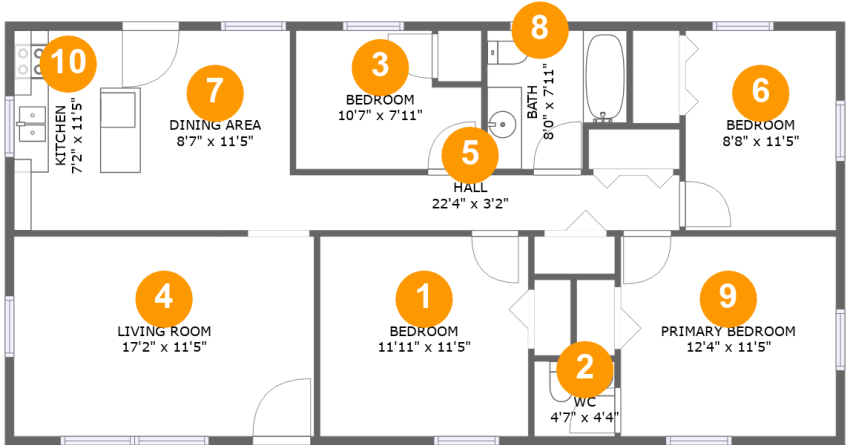
 **4** Bedrooms

 **1** Bathrooms

 **1** Half baths

Home report

15802 Allen Drive, Stony Springs, Dinwiddie, Dinwiddie County,
Virginia, United States, 23841, 15802 Allen Dr, Dinwiddie, VA,



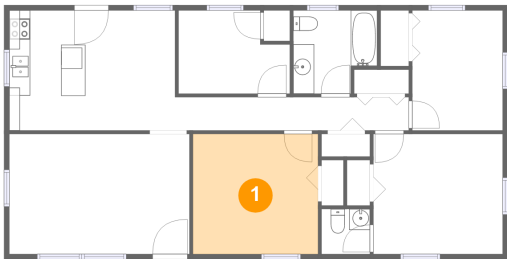
Room dimensions

Floor 1 Total:1094sqft Excluded: 0sqft

#		Max Dimensions	sqft	Included
1	Bedroom	11'11" x 11'5"	137 sq. ft	Yes
2	WC	4'7" x 4'4"	20 sq. ft	Yes
3	Bedroom	10'7" x 7'11"	75 sq. ft	Yes
4	Living Room	17'2" x 11'5"	197 sq. ft	Yes
5	Hall	22'4" x 3'2"	71 sq. ft	Yes
6	Bedroom	8'8" x 11'5"	99 sq. ft	Yes
7	Dining Area	8'7" x 11'5"	98 sq. ft	Yes
8	Bath	8'0" x 7'11"	57 sq. ft	Yes
9	Primary Bedroom	12'4" x 11'5"	141 sq. ft	Yes
10	Kitchen	7'2" x 11'5"	83 sq. ft	Yes

15802 Allen Drive, Stony Springs, Dinwiddie, Dinwiddie County,
Virginia, United States, 23841, 15802 Allen Dr, Dinwiddie, VA,

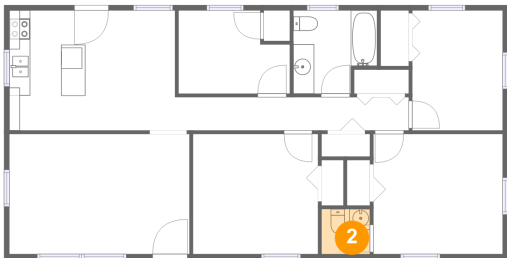
1 Floor 1 - Bedroom



Max Dimensions: 11'11" x 11'5"
Calculated Area: 137 sq. ft
Included: Yes

Heated: Yes
Finished: Yes
Enclosed: Yes
Contiguous: Yes
Permitted: Yes
Wet space: No
Addition: No
Conversion: No

2 Floor 1 - WC



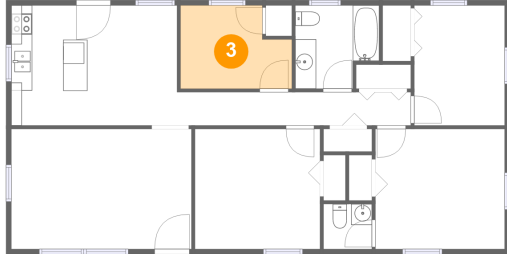
Max Dimensions: 4'7" x 4'4"
Calculated Area: 20 sq. ft
Included: Yes

Heated: Yes
Finished: Yes
Enclosed: Yes
Contiguous: Yes
Permitted: Yes
Wet space: Yes
Addition: No
Conversion: No

Home report

15802 Allen Drive, Stony Springs, Dinwiddie, Dinwiddie County,
Virginia, United States, 23841, 15802 Allen Dr, Dinwiddie, VA,

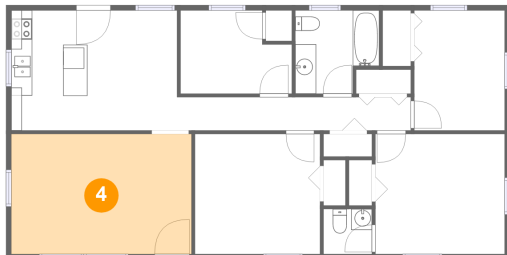
3 Floor 1 - Bedroom



Max Dimensions: 10'7" x 7'11"
Calculated Area: 75 sq. ft
Included: Yes

Heated: Yes
Finished: Yes
Enclosed: Yes
Contiguous: Yes
Permitted: Yes
Wet space: No
Addition: No
Conversion: No

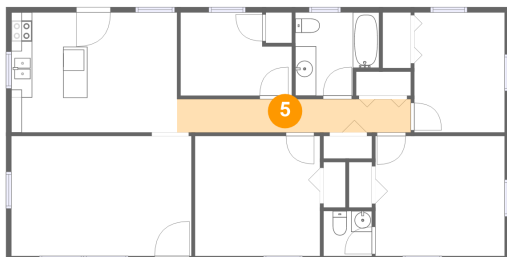
4 Floor 1 - Living Room



Max Dimensions: 17'2" x 11'5"
Calculated Area: 197 sq. ft
Included: Yes

Heated: Yes
Finished: Yes
Enclosed: Yes
Contiguous: Yes
Permitted: Yes
Wet space: No
Addition: No
Conversion: No

5 Floor 1 - Hall



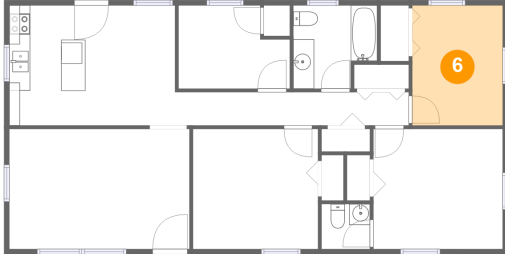
Max Dimensions: 22'4" x 3'2"
Calculated Area: 71 sq. ft
Included: Yes

Heated: Yes
Finished: Yes
Enclosed: Yes
Contiguous: Yes
Permitted: Yes
Wet space: No
Addition: No
Conversion: No

Home report

15802 Allen Drive, Stony Springs, Dinwiddie, Dinwiddie County,
Virginia, United States, 23841, 15802 Allen Dr, Dinwiddie, VA,

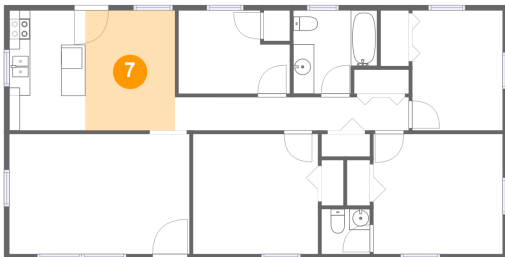
6 Floor 1 - Bedroom



Max Dimensions: 8'8" x 11'5"
Calculated Area: 99 sq. ft
Included: Yes

Heated: Yes
Finished: Yes
Enclosed: Yes
Contiguous: Yes
Permitted: Yes
Wet space: No
Addition: No
Conversion: No

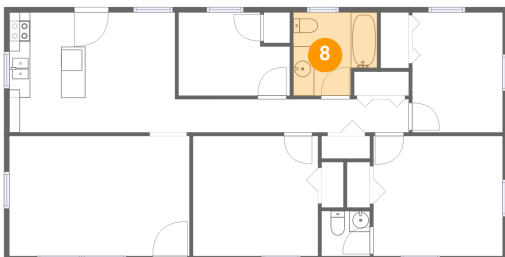
7 Floor 1 - Dining Area



Max Dimensions: 8'7" x 11'5"
Calculated Area: 98 sq. ft
Included: Yes

Heated: Yes
Finished: Yes
Enclosed: Yes
Contiguous: Yes
Permitted: Yes
Wet space: No
Addition: No
Conversion: No

8 Floor 1 - Bath

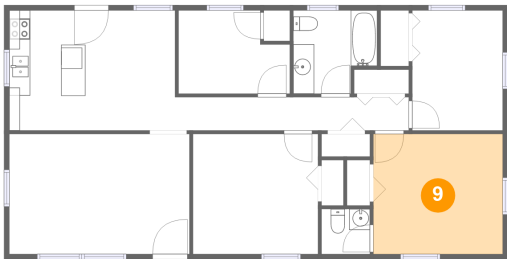


Max Dimensions: 8'0" x 7'11"
Calculated Area: 57 sq. ft
Included: Yes

Heated: Yes
Finished: Yes
Enclosed: Yes
Contiguous: Yes
Permitted: Yes
Wet space: Yes
Addition: No
Conversion: No

15802 Allen Drive, Stony Springs, Dinwiddie, Dinwiddie County,
Virginia, United States, 23841, 15802 Allen Dr, Dinwiddie, VA,

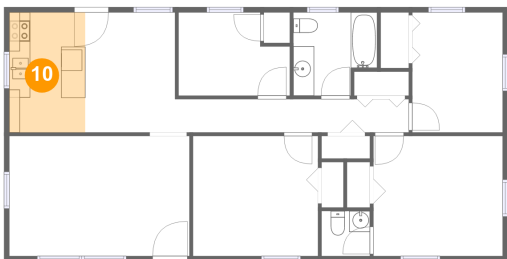
9 Floor 1 - Primary Bedroom



Max Dimensions: 12'4" x 11'5"
Calculated Area: 141 sq. ft
Included: Yes

Heated: Yes
Finished: Yes
Enclosed: Yes
Contiguous: Yes
Permitted: Yes
Wet space: No
Addition: No
Conversion: No

10 Floor 1 - Kitchen



Max Dimensions: 7'2" x 11'5"
Calculated Area: 83 sq. ft
Included: Yes

Heated: Yes
Finished: Yes
Enclosed: Yes
Contiguous: Yes
Permitted: Yes
Wet space: No
Addition: No
Conversion: No