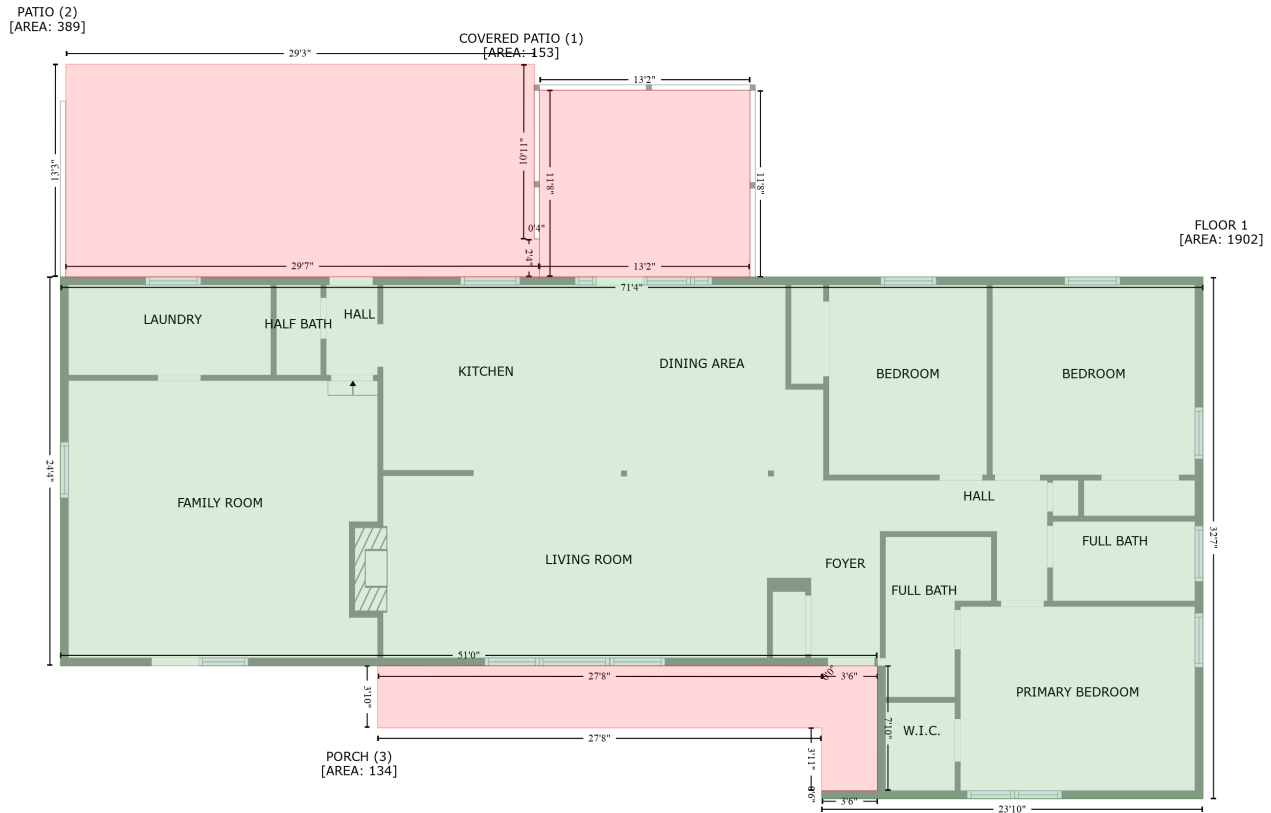


198 Etta Street, Hot Springs, Garland County, Arkansas, United States, 71901

Gross Living Area: 1902 sq. ft



Space	Area (sq. ft)	Calculation
FLOOR 1 (Living area)	1902	$-\left((781.7 + 781.7) * (370.5 - 761.6) + (781.7 + 496.1) * (761.6 - 761.6) + (496.1 + 496.1) * (761.6 - 755.6) + (496.1 + 537.9) * (755.6 - 755.6) + (537.9 + 537.9) * (755.6 - 662) + (537.9 + -73.9) * (662 - 662) + (-73.9 + -73.9) * (662 - 370.5) + (-73.9 + 781.7) * (370.5 - 370.5)\right) * 0.5 * 0.00694$
COVERED PATIO (Non-living area)	153	$-\left((442.5 + 442.5) * (230.5 - 370.5) + (442.5 + 284.9) * (370.5 - 370.5) + (284.9 + 284.9) * (370.5 - 230.5) + (284.9 + 442.5) * (230.5 - 230.5)\right) * 0.5 * 0.00694$
PATIO (Non-living area)	389	$-\left((281 + 280.9) * (211 - 342.1) + (280.9 + 284.9) * (342.1 - 342.1) + (284.9 + 284.9) * (342.1 - 370.3) + (284.9 + -69.9) * (370.3 - 370.5) + (-69.9 + -69.8) * (370.5 - 211) + (-69.8 + 281) * (211 - 211)\right) * 0.5 * 0.00694$
PORCH (Non-living area)	134	$-\left((537.9 + 537.7) * (662 - 755.6) + (537.7 + 496.1) * (755.6 - 755.6) + (496.1 + 496.1) * (755.6 - 708.5) + (496.1 + 163.7) * (708.5 - 708.5) + (163.7 + 163.7) * (708.5 - 662) + (163.7 + 496.1) * (662 - 662.1) + (496.1 + 496.2) * (662.1 - 662) + (496.2 + 537.9) * (662 - 662)\right) * 0.5 * 0.00694$