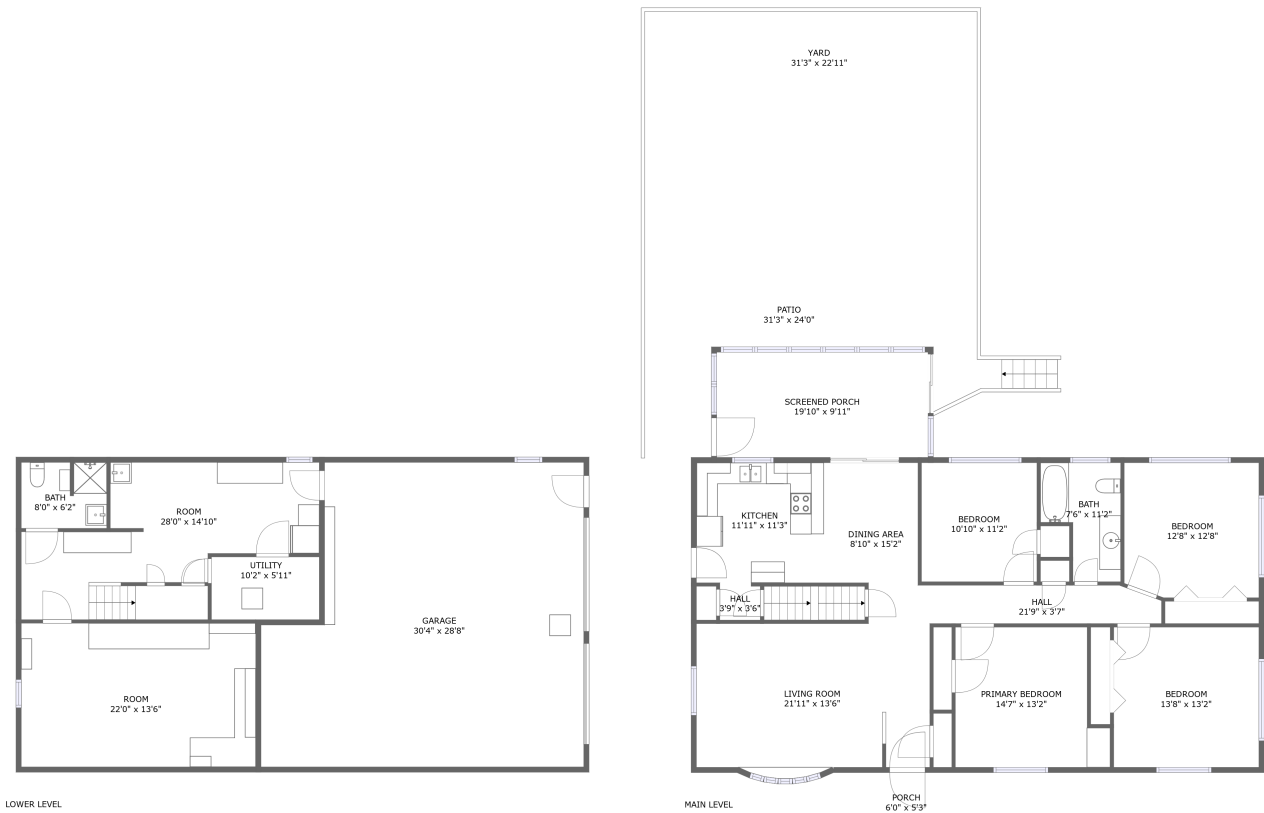


Home report

143 North Duke Street, Millersville, Lancaster County,  
Pennsylvania, United States, 17551




Property summary


 **1** Garages


 **4** Bedrooms

 **2** Bathrooms

 **0** Half baths

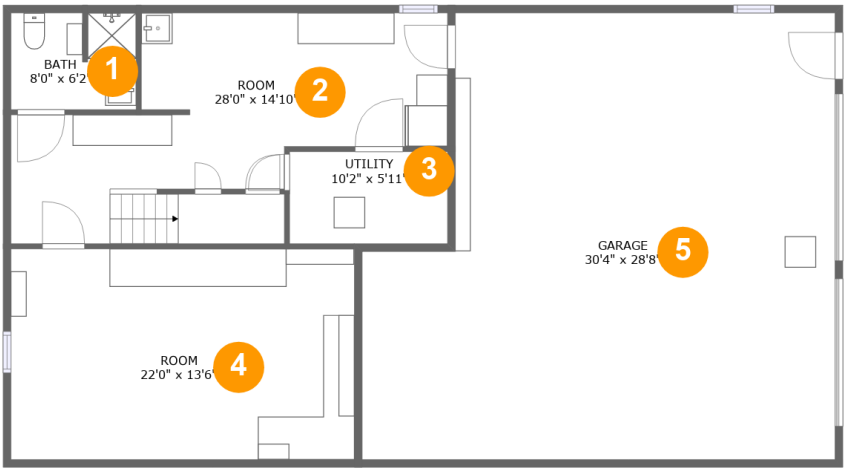
 **2** Floors

 **2,315** Gross living area sqft

 **4,006** Total sqft

Home report

143 North Duke Street, Millersville, Lancaster County,  
Pennsylvania, United States, 17551



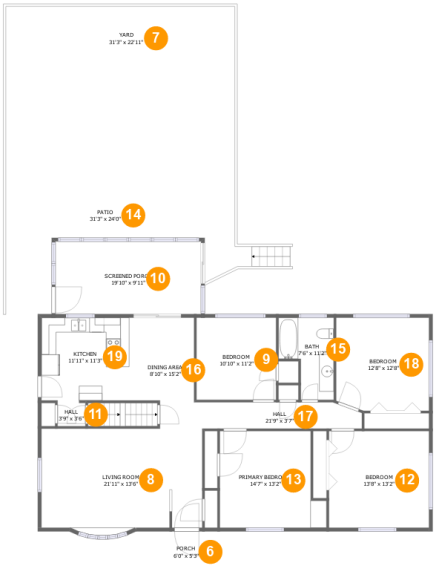
Room dimensions

Floor 1 Total sqft: 1597    Living area: 711

#		Max Dimensions	sqft	Included
1	Bath	8'0" x 6'2"	49 sq. ft	Yes
2	Room	28'0" x 14'10"	291 sq. ft	Yes
3	Utility	10'2" x 5'11"	60 sq. ft	No
4	Room	22'0" x 13'6"	298 sq. ft	Yes
5	Garage	30'4" x 28'8"	778 sq. ft	No

Home report

143 North Duke Street, Millersville, Lancaster County,  
Pennsylvania, United States, 17551



Room dimensions

Floor 2 Total sqft: 2409 Living area: 1604

#		Max Dimensions	sqft	Included
6	Porch	6'0" x 5'3"	32 sq. ft	No
7	Yard	31'3" x 22'11"	593 sq. ft	No
8	Living Room	21'11" x 13'6"	302 sq. ft	Yes
9	Bedroom	10'10" x 11'2"	121 sq. ft	Yes
10	Screened Porch	19'10" x 9'11"	197 sq. ft	No
11	Hall	3'9" x 3'6"	13 sq. ft	Yes
12	Bedroom	13'8" x 13'2"	180 sq. ft	Yes
13	Primary Bedroom	14'7" x 13'2"	171 sq. ft	Yes
14	Patio	31'3" x 24'0"	556 sq. ft	No
15	Bath	7'6" x 11'2"	67 sq. ft	Yes
16	Dining Area	8'10" x 15'2"	122 sq. ft	Yes

Home report

143 North Duke Street, Millersville, Lancaster County,  
Pennsylvania, United States, 17551

#		Max Dimensions	sqft	Included
17	Hall	21'9" x 3'7"	76 sq. ft	Yes
18	Bedroom	12'8" x 12'8"	158 sq. ft	Yes
19	Kitchen	11'11" x 11'3"	135 sq. ft	Yes

143 North Duke Street, Millersville, Lancaster County,  
Pennsylvania, United States, 17551

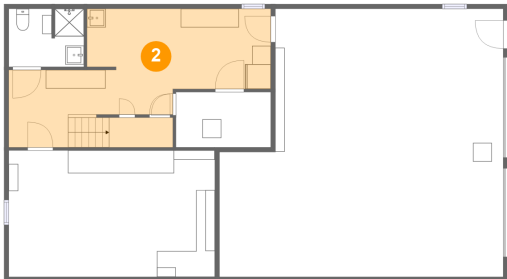
1 Floor 1 - Bath



Max Dimensions: 8'0" x 6'2"  
Calculated Area: 49 sq. ft  
Included: Yes

Heated: Yes  
Finished: Yes  
Enclosed: Yes  
Contiguous: Yes  
Permitted: Yes  
Wet space: Yes  
Addition: No  
Conversion: No

2 Floor 1 - Room

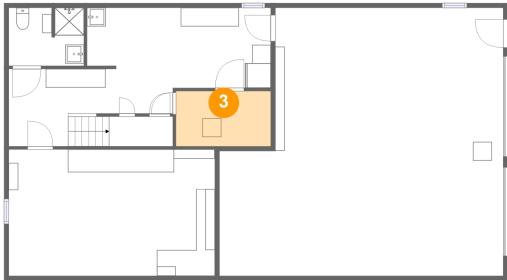


Max Dimensions: 28'0" x 14'10"  
Calculated Area: 291 sq. ft  
Included: Yes

Heated: Yes  
Finished: Yes  
Enclosed: Yes  
Contiguous: Yes  
Permitted: Yes  
Wet space: No  
Addition: No  
Conversion: No

143 North Duke Street, Millersville, Lancaster County,  
Pennsylvania, United States, 17551

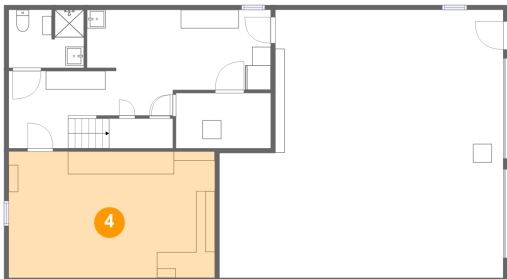
3 Floor 1 - Utility



Max Dimensions: 10'2" x 5'11"  
Calculated Area: 60 sq. ft  
Included: No

Heated: Yes  
Finished: No  
Enclosed: Yes  
Contiguous: Yes  
Permitted: Yes  
Wet space: No  
Addition: No  
Conversion: No

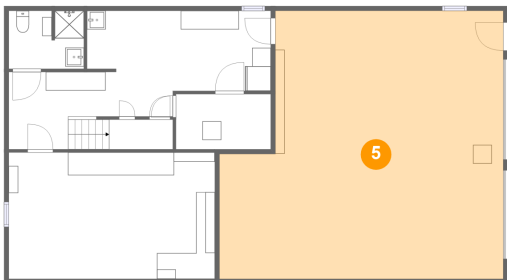
4 Floor 1 - Room



Max Dimensions: 22'0" x 13'6"  
Calculated Area: 298 sq. ft  
Included: Yes

Heated: Yes  
Finished: Yes  
Enclosed: Yes  
Contiguous: Yes  
Permitted: Yes  
Wet space: No  
Addition: No  
Conversion: No

5 Floor 1 - Garage



Max Dimensions: 30'4" x 28'8"  
Calculated Area: 778 sq. ft  
Included: No

Heated: No  
Finished: No  
Enclosed: Yes  
Contiguous: Yes  
Permitted: Yes  
Wet space: No  
Addition: No  
Conversion: No

143 North Duke Street, Millersville, Lancaster County,  
Pennsylvania, United States, 17551

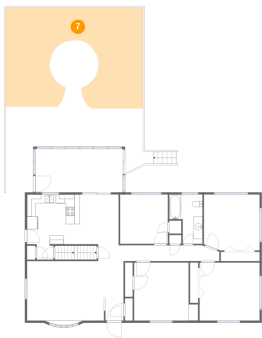
6 Floor 2 - Porch



Max Dimensions: 6'0" x 5'3"  
Calculated Area: 32 sq. ft  
Included: No

Heated: No  
Finished: Yes  
Enclosed: No  
Contiguous: Yes  
Permitted: Yes  
Wet space: No  
Addition: No  
Conversion: No

7 Floor 2 - Yard



Max Dimensions: 31'3" x 22'11"  
Calculated Area: 593 sq. ft  
Included: No

Heated: No  
Finished: No  
Enclosed: No  
Contiguous: Yes  
Permitted: No  
Wet space: No  
Addition: No  
Conversion: No

8 Floor 2 - Living Room



Max Dimensions: 21'11" x 13'6"  
Calculated Area: 302 sq. ft  
Included: Yes

Heated: Yes  
Finished: Yes  
Enclosed: Yes  
Contiguous: Yes  
Permitted: Yes  
Wet space: No  
Addition: No  
Conversion: No

143 North Duke Street, Millersville, Lancaster County,  
Pennsylvania, United States, 17551

9 Floor 2 - Bedroom



Max Dimensions: 10'10" x 11'2"  
Calculated Area: 121 sq. ft  
Included: Yes

Heated: Yes  
Finished: Yes  
Enclosed: Yes  
Contiguous: Yes  
Permitted: Yes  
Wet space: No  
Addition: No  
Conversion: No

10 Floor 2 - Screened Porch



Max Dimensions: 19'10" x 9'11"  
Calculated Area: 197 sq. ft  
Included: No

Heated: No  
Finished: Yes  
Enclosed: No  
Contiguous: Yes  
Permitted: Yes  
Wet space: No  
Addition: No  
Conversion: No

11 Floor 2 - Hall



Max Dimensions: 3'9" x 3'6"  
Calculated Area: 13 sq. ft  
Included: Yes

Heated: Yes  
Finished: Yes  
Enclosed: Yes  
Contiguous: Yes  
Permitted: Yes  
Wet space: No  
Addition: No  
Conversion: No



143 North Duke Street, Millersville, Lancaster County,  
Pennsylvania, United States, 17551

12 Floor 2 - Bedroom



Max Dimensions: 13'8" x 13'2"  
Calculated Area: 180 sq. ft  
Included: Yes

Heated: Yes  
Finished: Yes  
Enclosed: Yes  
Contiguous: Yes  
Permitted: Yes  
Wet space: No  
Addition: No  
Conversion: No

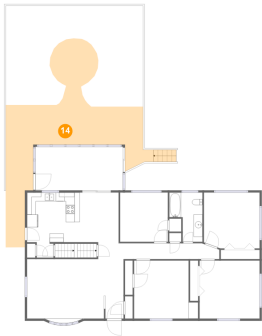
13 Floor 2 - Primary Bedroom



Max Dimensions: 14'7" x 13'2"  
Calculated Area: 171 sq. ft  
Included: Yes

Heated: Yes  
Finished: Yes  
Enclosed: Yes  
Contiguous: Yes  
Permitted: Yes  
Wet space: No  
Addition: No  
Conversion: No

14 Floor 2 - Patio



Max Dimensions: 31'3" x 24'0"  
Calculated Area: 556 sq. ft  
Included: No

Heated: No  
Finished: Yes  
Enclosed: No  
Contiguous: Yes  
Permitted: Yes  
Wet space: No  
Addition: No  
Conversion: No

143 North Duke Street, Millersville, Lancaster County,  
Pennsylvania, United States, 17551

15 Floor 2 - Bath



Max Dimensions: 7'6" x 11'2"  
Calculated Area: 67 sq. ft  
Included: Yes

Heated: Yes  
Finished: Yes  
Enclosed: Yes  
Contiguous: Yes  
Permitted: Yes  
Wet space: Yes  
Addition: No  
Conversion: No

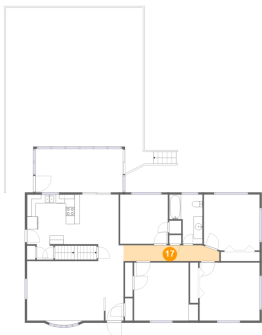
16 Floor 2 - Dining Area



Max Dimensions: 8'10" x 15'2"  
Calculated Area: 122 sq. ft  
Included: Yes

Heated: Yes  
Finished: Yes  
Enclosed: Yes  
Contiguous: Yes  
Permitted: Yes  
Wet space: No  
Addition: No  
Conversion: No

17 Floor 2 - Hall



Max Dimensions: 21'9" x 3'7"  
Calculated Area: 76 sq. ft  
Included: Yes

Heated: Yes  
Finished: Yes  
Enclosed: Yes  
Contiguous: Yes  
Permitted: Yes  
Wet space: No  
Addition: No  
Conversion: No

143 North Duke Street, Millersville, Lancaster County,  
Pennsylvania, United States, 17551

18 Floor 2 - Bedroom



Max Dimensions: 12'8" x 12'8"  
Calculated Area: 158 sq. ft  
Included: Yes

Heated: Yes  
Finished: Yes  
Enclosed: Yes  
Contiguous: Yes  
Permitted: Yes  
Wet space: No  
Addition: No  
Conversion: No

19 Floor 2 - Kitchen



Max Dimensions: 11'11" x 11'3"  
Calculated Area: 135 sq. ft  
Included: Yes

Heated: Yes  
Finished: Yes  
Enclosed: Yes  
Contiguous: Yes  
Permitted: Yes  
Wet space: No  
Addition: No  
Conversion: No