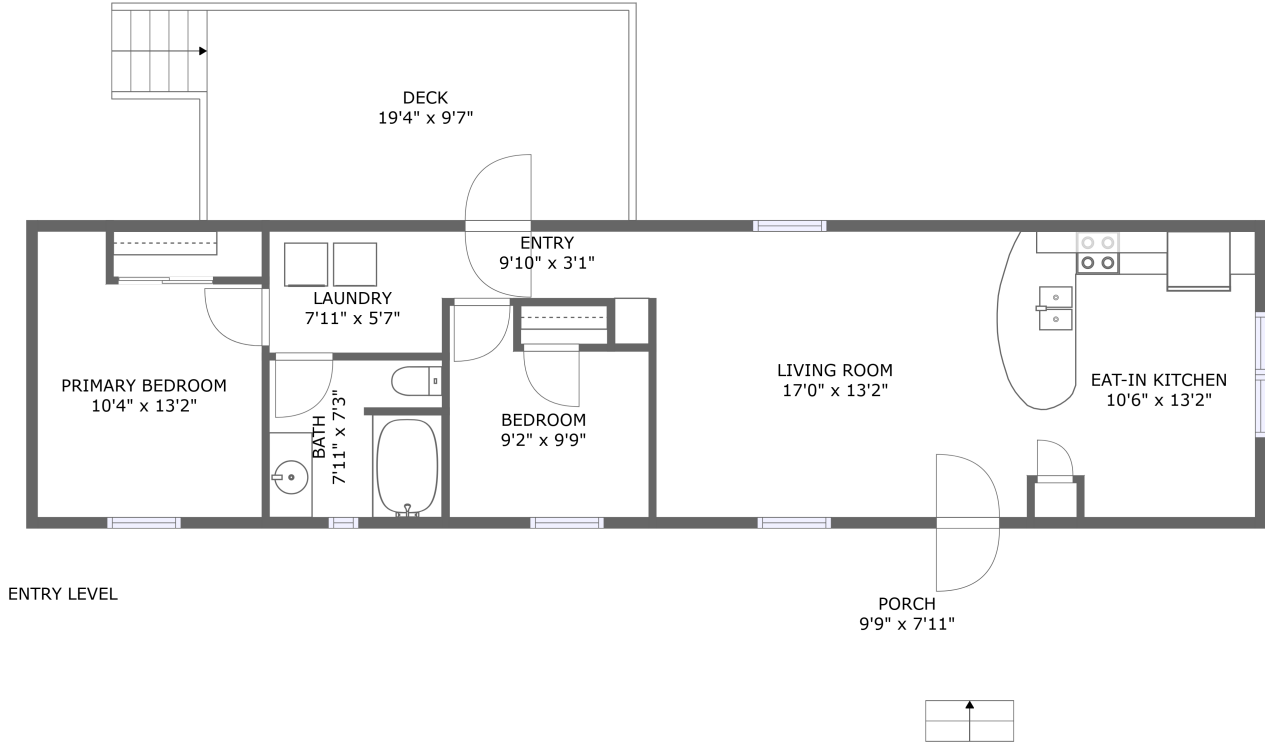



# 1209 Jefferson Dock Road, Penhook, Franklin County, Virginia, United States, 24137




## Property Summary


 **0** garages

 **2** bedrooms

 **1** bathrooms

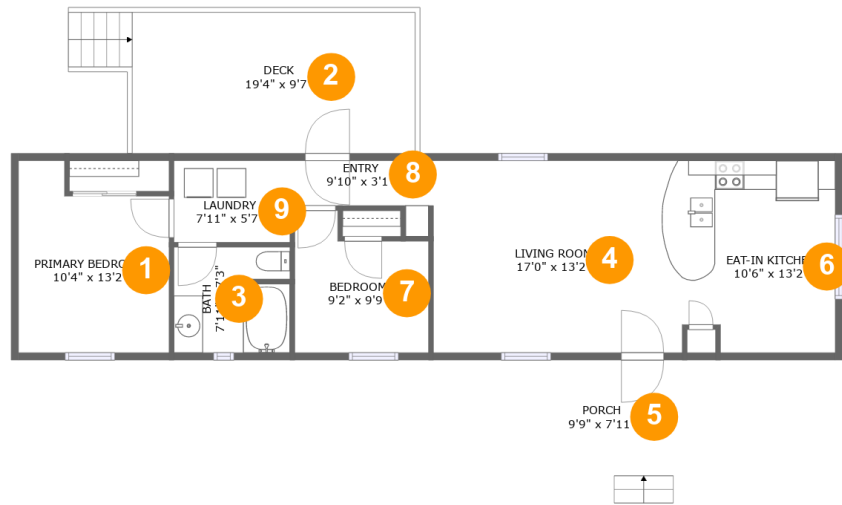
 **0** half baths

 **1** floors

 **803** Gross Living Area sqft

 **1,067** total sqft

# 1209 Jefferson Dock Road, Penhook, Franklin County, Virginia, United States, 24137



## Room Dimensions

Floor 1

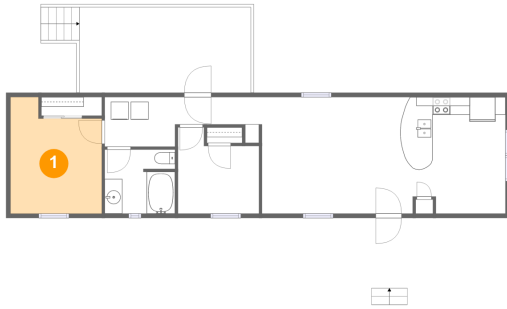
Total sqft: 1067

Living area: 803

#	Room name	Dimensions	Area (sqft)	Counted as Living Area
1	Primary Bedroom	10'4" x 13'2"	118 sq. ft	Yes
2	Deck	19'4" x 9'7"	187 sq. ft	No
3	Bath	7'11" x 7'3"	56 sq. ft	Yes
4	Living Room	17'0" x 13'2"	223 sq. ft	Yes
5	Porch	9'9" x 7'11"	77 sq. ft	No
6	Eat-in Kitchen	10'6" x 13'2"	132 sq. ft	Yes
7	Bedroom	9'2" x 9'9"	76 sq. ft	Yes
8	Entry	9'10" x 3'1"	33 sq. ft	Yes
9	Laundry	7'11" x 5'7"	44 sq. ft	Yes

# 1209 Jefferson Dock Road, Penhook, Franklin County, Virginia, United States, 24137

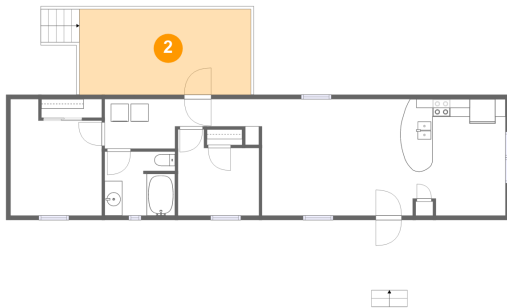
## 1 Floor 1 - Primary Bedroom



Dimensions: 10'4" x 13'2"  
Area: 118 sq. ft  
Counted as Living Area:  
Yes

Heated: Yes  
Finished: Yes  
Enclosed: Yes  
Contiguous:  
Yes  
Permitted: Yes  
Wet Space: No  
Addition: No  
Conversion: No

## 2 Floor 1 - Deck

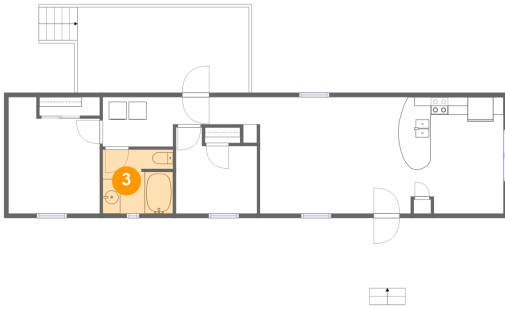


Dimensions: 19'4" x 9'7"  
Area: 187 sq. ft  
Counted as Living Area: No

Heated: No  
Finished: Yes  
Enclosed: No  
Contiguous: Yes  
Permitted: Yes  
Wet Space: No  
Addition: No  
Conversion: No

# 1209 Jefferson Dock Road, Penhook, Franklin County, Virginia, United States, 24137

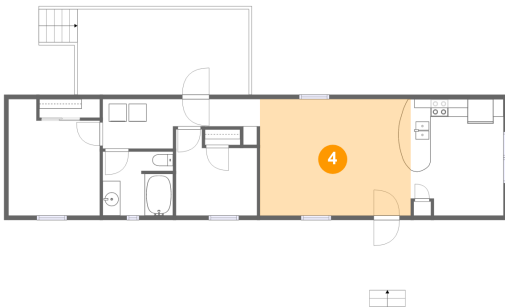
## 3 Floor 1 - Bath



Dimensions: 7'11" x 7'3"  
Area: 56 sq. ft  
Counted as Living Area:  
Yes

Heated: Yes  
Finished: Yes  
Enclosed: Yes  
Contiguous:  
Yes  
Permitted: Yes  
Wet Space: Yes  
Addition: No  
Conversion: No

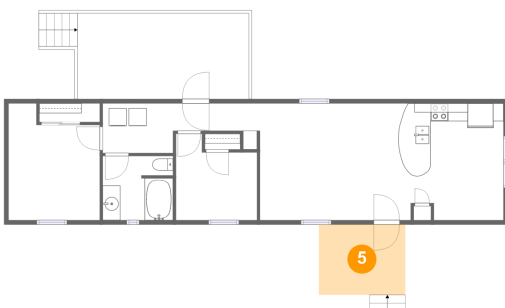
## 4 Floor 1 - Living Room



Dimensions: 17'0" x 13'2"  
Area: 223 sq. ft  
Counted as Living Area:  
Yes

Heated: Yes  
Finished: Yes  
Enclosed: Yes  
Contiguous:  
Yes  
Permitted: Yes  
Wet Space: No  
Addition: No  
Conversion: No

## 5 Floor 1 - Porch

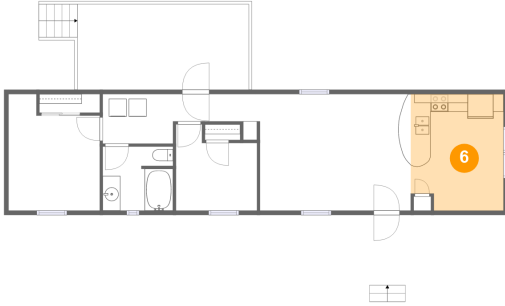


Dimensions: 9'9" x 7'11"  
Area: 77 sq. ft  
Counted as Living Area: No

Heated: No  
Finished: Yes  
Enclosed: No  
Contiguous: Yes  
Permitted: Yes  
Wet Space: No  
Addition: No  
Conversion: No

# 1209 Jefferson Dock Road, Penhook, Franklin County, Virginia, United States, 24137

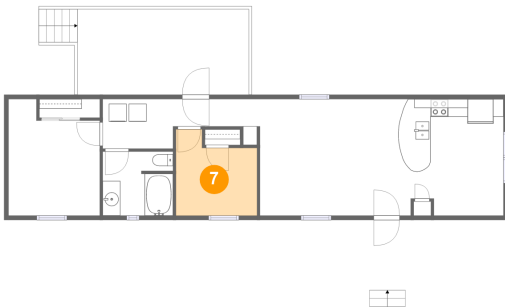
## 6 Floor 1 - Eat-in Kitchen



Dimensions: 10'6" x 13'2"  
Area: 132 sq. ft  
Counted as Living Area:  
Yes

Heated: Yes  
Finished: Yes  
Enclosed: Yes  
Contiguous:  
Yes  
Permitted: Yes  
Wet Space: No  
Addition: No  
Conversion: No

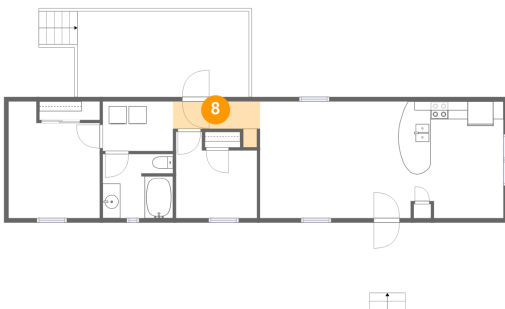
## 7 Floor 1 - Bedroom



Dimensions: 9'2" x 9'9"  
Area: 76 sq. ft  
Counted as Living Area:  
Yes

Heated: Yes  
Finished: Yes  
Enclosed: Yes  
Contiguous:  
Yes  
Permitted: Yes  
Wet Space: No  
Addition: No  
Conversion: No

## 8 Floor 1 - Entry

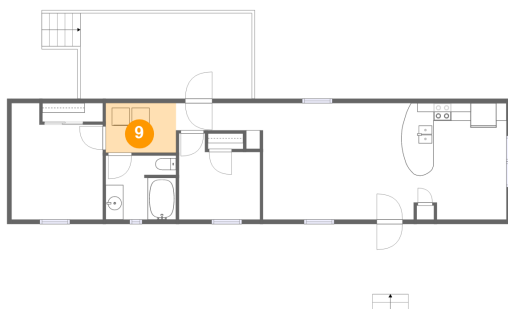


Dimensions: 9'10" x 3'1"  
Area: 33 sq. ft  
Counted as Living Area:  
Yes

Heated: Yes  
Finished: Yes  
Enclosed: Yes  
Contiguous:  
Yes  
Permitted: Yes  
Wet Space: No  
Addition: No  
Conversion: No

# 1209 Jefferson Dock Road, Penhook, Franklin County, Virginia, United States, 24137

## 9 Floor 1 - Laundry



Dimensions: 7'11" x 5'7"  
Area: 44 sq. ft  
Counted as Living Area:  
Yes

Heated: Yes  
Finished: Yes  
Enclosed: Yes  
Contiguous:  
Yes  
Permitted: Yes  
Wet Space: No  
Addition: No  
Conversion: No