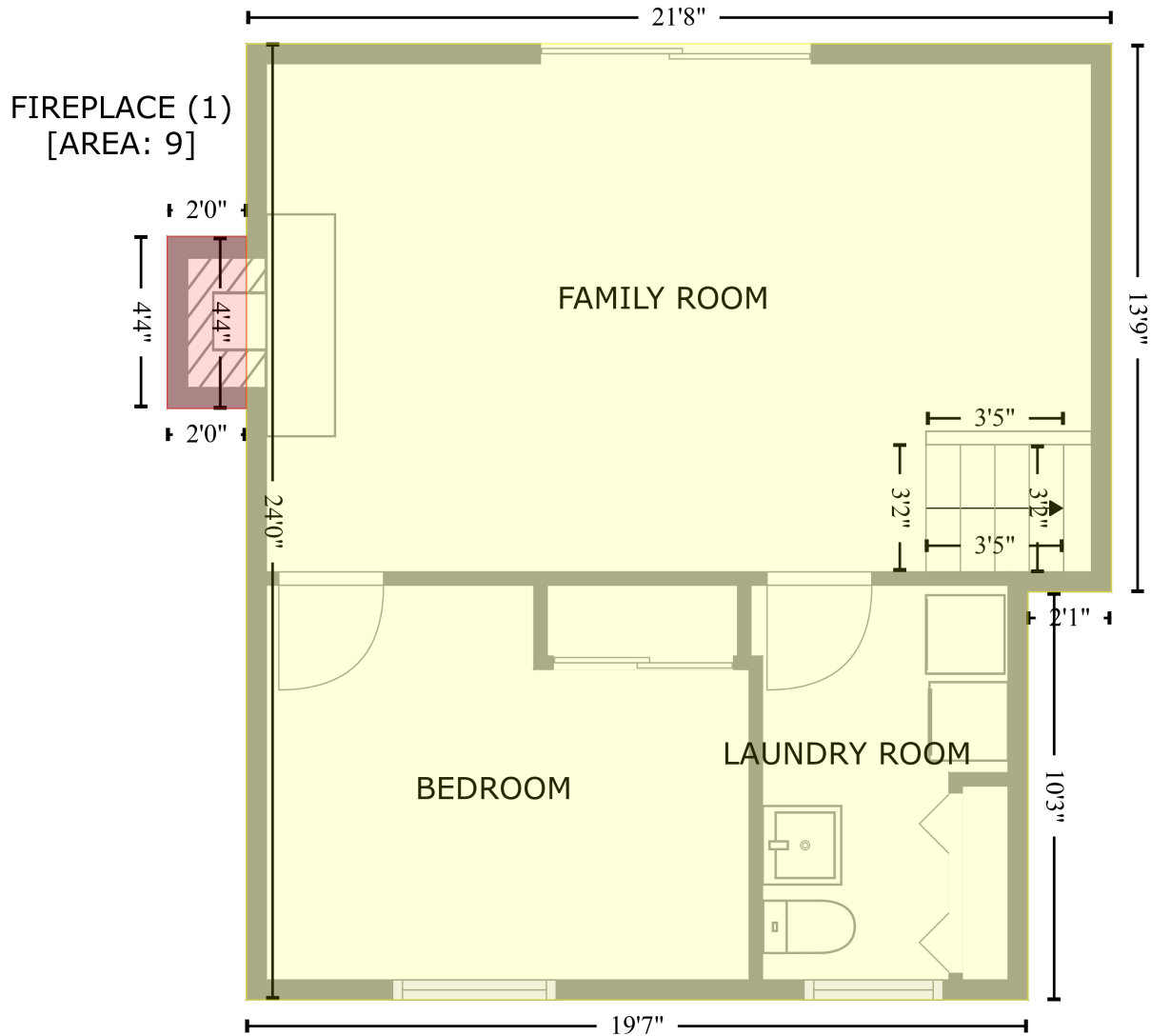


5312 Sprigwood Lane, Fern Creek, Louisville, Jefferson County, Kentucky, United States, 40291

Gross Living Area: 1073 sq. ft

Below Ground
[AREA: 498]

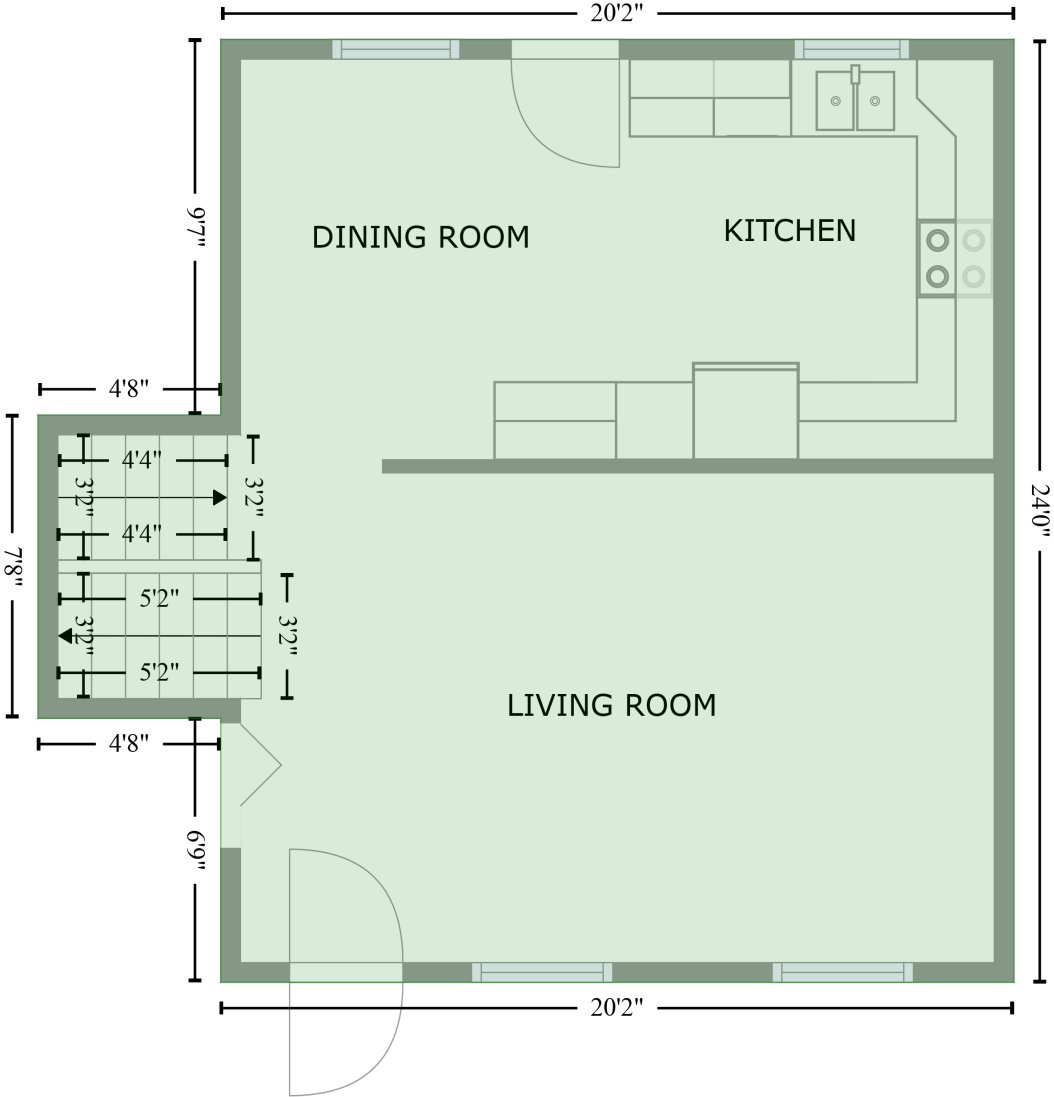


Space	Area (sq. ft)	Calculation <small>Coordinate Polygon Area Algorithm using inches</small>
Below Ground (Living area)	498	$-((258.6 + 258.6) * (50.7 - 215.5) + (258.6 + 233.5) * (215.5 - 215.5) + (233.5 + 233.5) * (215.5 - 338.2) + (233.5 + -1.6) * (338.2 - 338.2) + (-1.6 + -1.6) * (338.2 - 50.7) + (-1.6 + 258.6) * (50.7 - 50.7)) * 0.5 * 0.00694$
FIREPLACE (Non-living area)	9	$-((-1.6 + -1.6) * (108.6 - 160.3) + (-1.6 + -25.4) * (160.3 - 160.3) + (-25.4 + -25.4) * (160.3 - 108.6) + (-25.4 + -1.6) * (108.6 - 108.6)) * 0.5 * 0.00694$

5312 Sprigwood Lane, Fern Creek, Louisville, Jefferson County, Kentucky, United States, 40291

Gross Living Area: 1073 sq. ft

FLOOR 2
[AREA: 519]

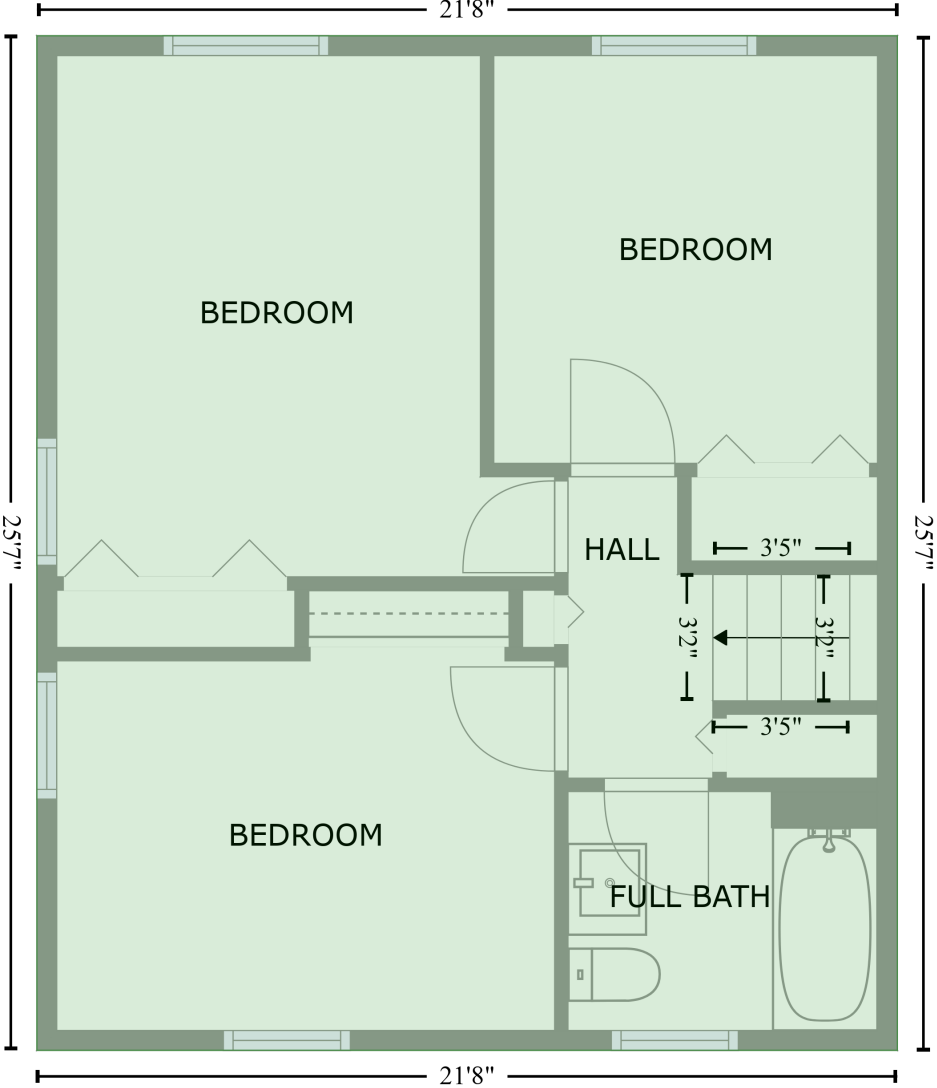


Space	Area (sq. ft)	Calculation <small>Coordinate Polygon Area Algorithm using inches</small>
FLOOR 2 (Living area)	519	$-\left((494.8 + 494.8) * (50.7 - 338.2) + (494.8 + 252.6) * (338.2 - 338.2) + (252.6 + 252.6) * (338.2 - 257.7) + (252.6 + 196.9) * (257.7 - 257.7) + (196.9 + 196.9) * (257.7 - 165.2) + (196.9 + 252.6) * (165.2 - 165.2) + (252.6 + 252.6) * (165.2 - 50.7) + (252.6 + 494.8) * (50.7 - 50.7)\right) * 0.5 * 0.00694$

5312 Sprigwood Lane, Fern Creek, Louisville, Jefferson County, Kentucky, United States, 40291

Gross Living Area: 1073 sq. ft

FLOOR 3
[AREA: 554]



Space	Area (sq. ft)	Calculation <small>Coordinate Polygon Area Algorithm using inches</small>
FLOOR 3 (Living area)	554	$-((258.6 + 258.6) * (50.7 - 357.3) + (258.6 + -1.6) * (357.3 - 357.3) + (-1.6 + -1.6) * (357.3 - 50.7) + (-1.6 + 258.6) * (50.7 - 50.7)) * 0.5 * 0.00694$