


Home report


2272 Donagale Drive Northeast, Roanoke, Roanoke County, Virginia, United States, 24012




Property summary




0
Garages



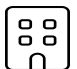
4
Bedrooms




2
Bathrooms




0
Half baths



2
Floors



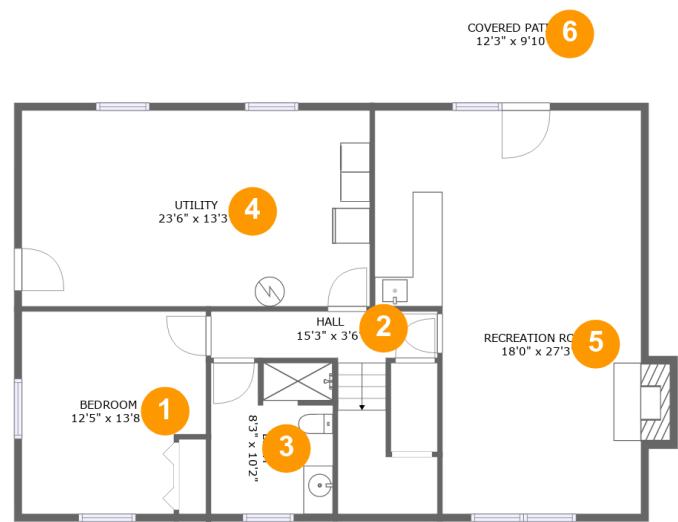
2,087
Gross living
area sqft



2,996
Total sqft

Home report

2272 Donagale Drive Northeast, Roanoke, Roanoke County, Virginia, United States, 24012



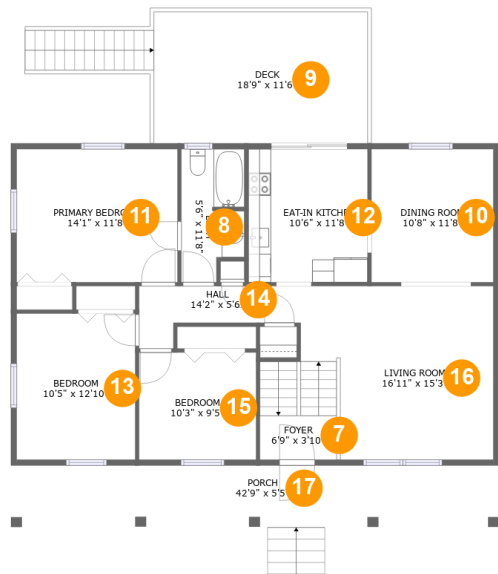
Room dimensions

Floor 1 Total sqft: 1341 Living area: 879

#		Max Dimensions	sqft	Included
1	Bedroom	12'5" x 13'8"	158 sq. ft	Yes
2	Hall	15'3" x 3'6"	96 sq. ft	Yes
3	Bath	8'3" x 10'2"	82 sq. ft	Yes
4	Utility	23'6" x 13'3"	311 sq. ft	No
5	Recreation Room	18'0" x 27'3"	436 sq. ft	Yes
6	Covered Patio	12'3" x 9'10"	122 sq. ft	No

Home report

2272 Donagale Drive Northeast, Roanoke, Roanoke County,
Virginia, United States, 24012



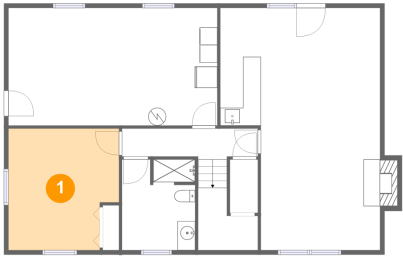
Room dimensions

Floor 2 Total sqft: 1655 Living area: 1208

#		Max Dimensions	sqft	Included
7	Foyer	6'9" x 3'10"	50 sq. ft	Yes
8	Bath	5'6" x 11'8"	58 sq. ft	Yes
9	Deck	18'9" x 11'6"	216 sq. ft	No
10	Dining Room	10'8" x 11'8"	125 sq. ft	Yes
11	Primary Bedroom	14'1" x 11'8"	165 sq. ft	Yes
12	Eat-in Kitchen	10'6" x 11'8"	122 sq. ft	Yes
13	Bedroom	10'5" x 12'10"	133 sq. ft	Yes
14	Hall	14'2" x 5'6"	52 sq. ft	Yes
15	Bedroom	10'3" x 9'5"	96 sq. ft	Yes
16	Living Room	16'11" x 15'3"	238 sq. ft	Yes
17	Porch	42'9" x 5'5"	231 sq. ft	No

2272 Donagale Drive Northeast, Roanoke, Roanoke County,
Virginia, United States, 24012

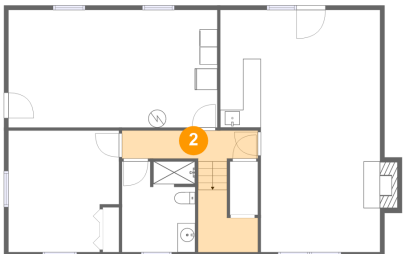
1 Floor 1 - Bedroom



Max Dimensions: 12'5" x 13'8"
Calculated Area: 158 sq. ft
Included: Yes

Heated: Yes
Finished: Yes
Enclosed: Yes
Contiguous: Yes
Permitted: Yes
Wet space: No
Addition: No
Conversion: No

2 Floor 1 - Hall

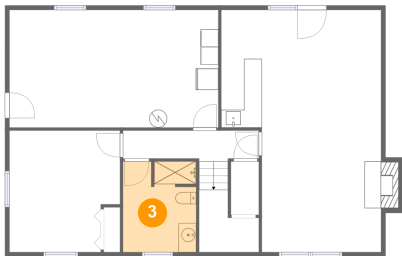


Max Dimensions: 15'3" x 3'6"
Calculated Area: 96 sq. ft
Included: Yes

Heated: Yes
Finished: Yes
Enclosed: Yes
Contiguous: Yes
Permitted: Yes
Wet space: No
Addition: No
Conversion: No

2272 Donagale Drive Northeast, Roanoke, Roanoke County,
Virginia, United States, 24012

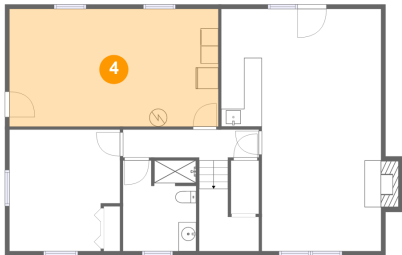
3 Floor 1 - Bath



Max Dimensions: 8'3" x 10'2"
Calculated Area: 82 sq. ft
Included: Yes

Heated: Yes
Finished: Yes
Enclosed: Yes
Contiguous: Yes
Permitted: Yes
Wet space: Yes
Addition: No
Conversion: No

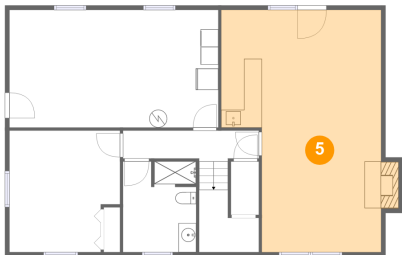
4 Floor 1 - Utility



Max Dimensions: 23'6" x 13'3"
Calculated Area: 311 sq. ft
Included: No

Heated: Yes
Finished: No
Enclosed: Yes
Contiguous: Yes
Permitted: Yes
Wet space: No
Addition: No
Conversion: No

5 Floor 1 - Recreation Room

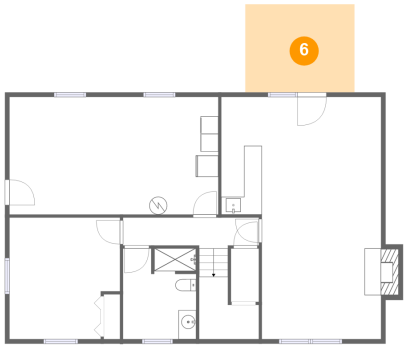


Max Dimensions: 18'0" x 27'3"
Calculated Area: 436 sq. ft
Included: Yes

Heated: Yes
Finished: Yes
Enclosed: Yes
Contiguous: Yes
Permitted: Yes
Wet space: No
Addition: No
Conversion: No

2272 Donagale Drive Northeast, Roanoke, Roanoke County,
Virginia, United States, 24012

6 Floor 1 - Covered Patio



Max Dimensions: 12'3" x 9'10"
Calculated Area: 122 sq. ft
Included: No

Heated: No
Finished: Yes
Enclosed: No
Contiguous: Yes
Permitted: Yes
Wet space: No
Addition: No
Conversion: No

7 Floor 2 - Foyer



Max Dimensions: 6'9" x 3'10"
Calculated Area: 50 sq. ft
Included: Yes

Heated: Yes
Finished: Yes
Enclosed: Yes
Contiguous: Yes
Permitted: Yes
Wet space: No
Addition: No
Conversion: No

8 Floor 2 - Bath

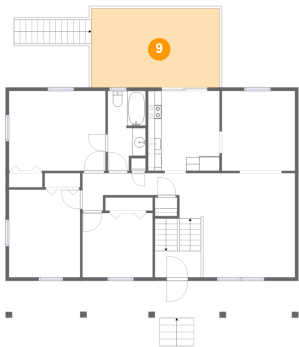


Max Dimensions: 5'6" x 11'8"
Calculated Area: 58 sq. ft
Included: Yes

Heated: Yes
Finished: Yes
Enclosed: Yes
Contiguous: Yes
Permitted: Yes
Wet space: Yes
Addition: No
Conversion: No

2272 Donagale Drive Northeast, Roanoke, Roanoke County,
Virginia, United States, 24012

9 Floor 2 - Deck



Max Dimensions: 18'9" x 11'6"
Calculated Area: 216 sq. ft
Included: No

Heated: No
Finished: Yes
Enclosed: No
Contiguous: Yes
Permitted: Yes
Wet space: No
Addition: No
Conversion: No

10 Floor 2 - Dining Room



Max Dimensions: 10'8" x 11'8"
Calculated Area: 125 sq. ft
Included: Yes

Heated: Yes
Finished: Yes
Enclosed: Yes
Contiguous: Yes
Permitted: Yes
Wet space: No
Addition: No
Conversion: No

11 Floor 2 - Primary Bedroom



Max Dimensions: 14'1" x 11'8"
Calculated Area: 165 sq. ft
Included: Yes

Heated: Yes
Finished: Yes
Enclosed: Yes
Contiguous: Yes
Permitted: Yes
Wet space: No
Addition: No
Conversion: No

2272 Donagale Drive Northeast, Roanoke, Roanoke County,
Virginia, United States, 24012

12 Floor 2 - Eat-in Kitchen



Max Dimensions: 10'6" x 11'8"
Calculated Area: 122 sq. ft
Included: Yes

Heated: Yes
Finished: Yes
Enclosed: Yes
Contiguous: Yes
Permitted: Yes
Wet space: No
Addition: No
Conversion: No

13 Floor 2 - Bedroom



Max Dimensions: 10'5" x 12'10"
Calculated Area: 133 sq. ft
Included: Yes

Heated: Yes
Finished: Yes
Enclosed: Yes
Contiguous: Yes
Permitted: Yes
Wet space: No
Addition: No
Conversion: No

14 Floor 2 - Hall



Max Dimensions: 14'2" x 5'6"
Calculated Area: 52 sq. ft
Included: Yes

Heated: Yes
Finished: Yes
Enclosed: Yes
Contiguous: Yes
Permitted: Yes
Wet space: No
Addition: No
Conversion: No

2272 Donagale Drive Northeast, Roanoke, Roanoke County,
Virginia, United States, 24012

15 Floor 2 - Bedroom



Max Dimensions: 10'3" x 9'5"
Calculated Area: 96 sq. ft
Included: Yes

Heated: Yes
Finished: Yes
Enclosed: Yes
Contiguous: Yes
Permitted: Yes
Wet space: No
Addition: No
Conversion: No

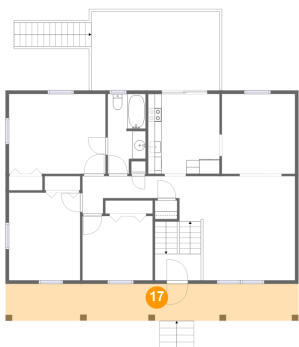
16 Floor 2 - Living Room



Max Dimensions: 16'11" x 15'3"
Calculated Area: 238 sq. ft
Included: Yes

Heated: Yes
Finished: Yes
Enclosed: Yes
Contiguous: Yes
Permitted: Yes
Wet space: No
Addition: No
Conversion: No

17 Floor 2 - Porch



Max Dimensions: 42'9" x 5'5"
Calculated Area: 231 sq. ft
Included: No

Heated: No
Finished: Yes
Enclosed: No
Contiguous: Yes
Permitted: Yes
Wet space: No
Addition: No
Conversion: No