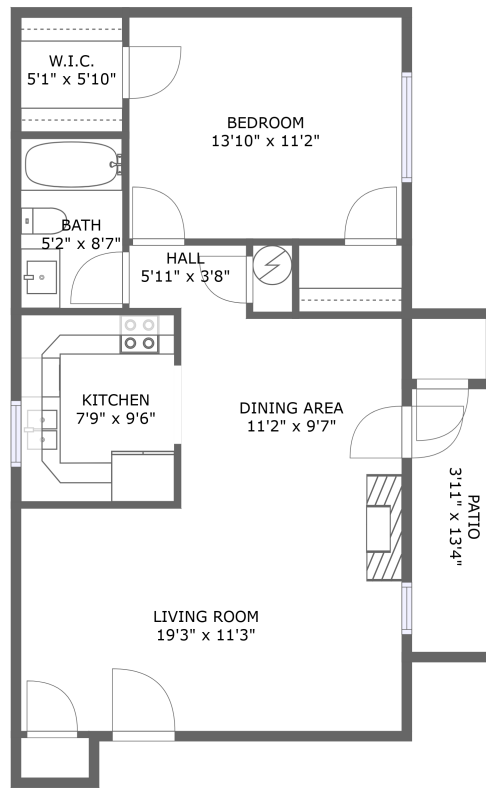


3549 Timberline Trail, Roanoke, Virginia, United States



FLOOR 1

Property summary

 **0** Garages


 **1** Bedrooms

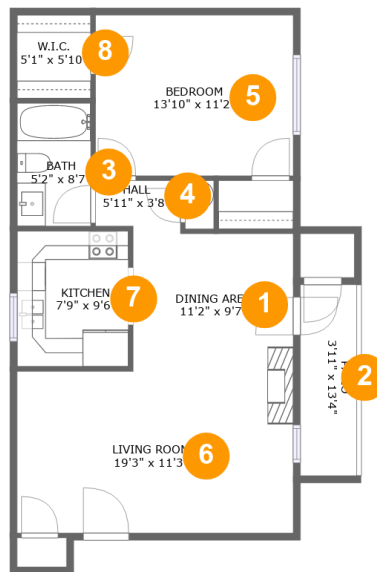
 **1** Bathrooms

 **0** Half baths

 **1** Floors

 **706** Gross living area sqft

 **770** Total sqft

3549 Timberline Trail, Roanoke, Virginia, United States**Room dimensions**

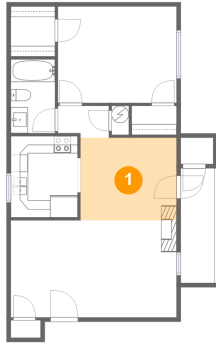
Floor 1

Total sqft: 770 Living area: 706

#		Dimensions	sqft	Counted as living area
1	Dining Area	11'2" x 9'7"	108 sq. ft	Yes
2	Patio	3'11" x 13'4"	52 sq. ft	No
3	Bath	5'2" x 8'7"	44 sq. ft	Yes
4	Hall	5'11" x 3'8"	21 sq. ft	Yes
5	Bedroom	13'10" x 11'2"	155 sq. ft	Yes
6	Living Room	19'3" x 11'3"	218 sq. ft	Yes
7	Kitchen	7'9" x 9'6"	74 sq. ft	Yes
8	W.I.C.	5'1" x 5'10"	30 sq. ft	Yes

3549 Timberline Trail, Roanoke, Virginia, United States

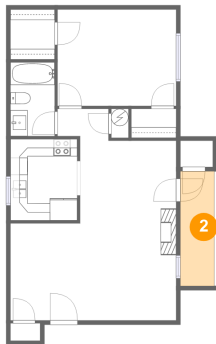
1 Floor 1 - Dining Area



Dimensions: 11'2" x 9'7"
Area: 108 sq. ft
Counted as living area: Yes

Heated: Yes
Finished: Yes
Enclosed: Yes
Contiguous: Yes
Permitted: Yes
Wet space: No
Addition: No
Conversion: No

2 Floor 1 - Patio

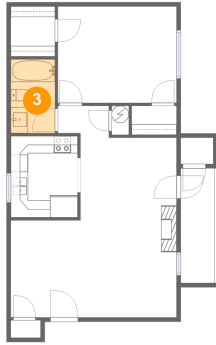


Dimensions: 3'11" x 13'4"
Area: 52 sq. ft
Counted as living area: No

Heated: No
Finished: Yes
Enclosed: No
Contiguous: Yes
Permitted: Yes
Wet space: No
Addition: No
Conversion: No

3549 Timberline Trail, Roanoke, Virginia, United States

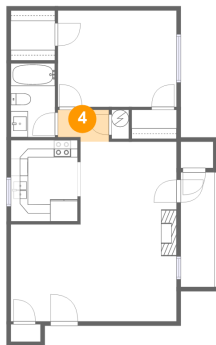
3 Floor 1 - Bath



Dimensions: 5'2" x 8'7"
Area: 44 sq. ft
Counted as living area: Yes

Heated: Yes
Finished: Yes
Enclosed: Yes
Contiguous: Yes
Permitted: Yes
Wet space: Yes
Addition: No
Conversion: No

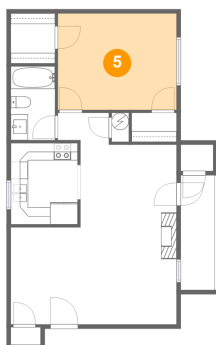
4 Floor 1 - Hall



Dimensions: 5'11" x 3'8"
Area: 21 sq. ft
Counted as living area: Yes

Heated: Yes
Finished: Yes
Enclosed: Yes
Contiguous: Yes
Permitted: Yes
Wet space: No
Addition: No
Conversion: No

5 Floor 1 - Bedroom

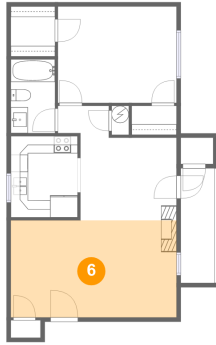


Dimensions: 13'10" x 11'2"
Area: 155 sq. ft
Counted as living area: Yes

Heated: Yes
Finished: Yes
Enclosed: Yes
Contiguous: Yes
Permitted: Yes
Wet space: No
Addition: No
Conversion: No

3549 Timberline Trail, Roanoke, Virginia, United States

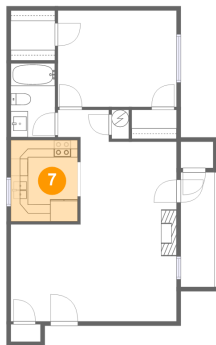
6 Floor 1 - Living Room



Dimensions: 19'3" x 11'3"
Area: 218 sq. ft
Counted as living area: Yes

Heated: Yes
Finished: Yes
Enclosed: Yes
Contiguous: Yes
Permitted: Yes
Wet space: No
Addition: No
Conversion: No

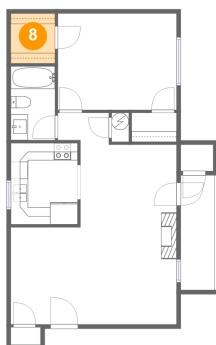
7 Floor 1 - Kitchen



Dimensions: 7'9" x 9'6"
Area: 74 sq. ft
Counted as living area: Yes

Heated: Yes
Finished: Yes
Enclosed: Yes
Contiguous: Yes
Permitted: Yes
Wet space: No
Addition: No
Conversion: No

8 Floor 1 - W.I.C.



Dimensions: 5'1" x 5'10"
Area: 30 sq. ft
Counted as living area: Yes

Heated: Yes
Finished: Yes
Enclosed: Yes
Contiguous: Yes
Permitted: Yes
Wet space: No
Addition: No
Conversion: No