



Home report


2208 Preston Rd,Peterborough,ON,CA




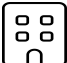
Property summary


 **1** Garages


 **4** Bedrooms

 **2** Bathrooms

 **1** Half baths

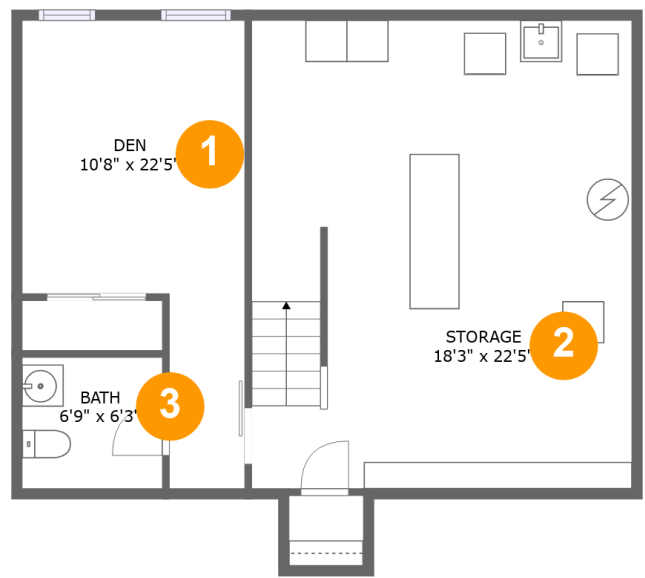
 **3** Floors

 **2,276** Gross living area sqft

 **2,995** Total sqft

Home report

2208 Preston Rd,Peterborough,ON,CA



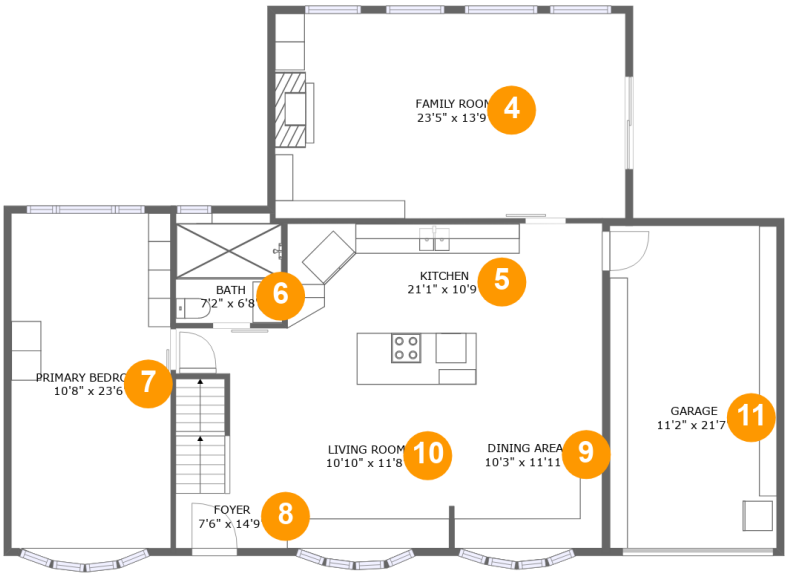
Room dimensions

Floor 1 Total sqft: 726 Living area: 270

#		Dimensions	sqft	Counted as living area
1	Den	10'8" x 22'5"	173 sq. ft	Yes
2	Storage	18'3" x 22'5"	409 sq. ft	No
3	Bath	6'9" x 6'3"	42 sq. ft	Yes

Home report

2208 Preston Rd,Peterborough,ON,CA



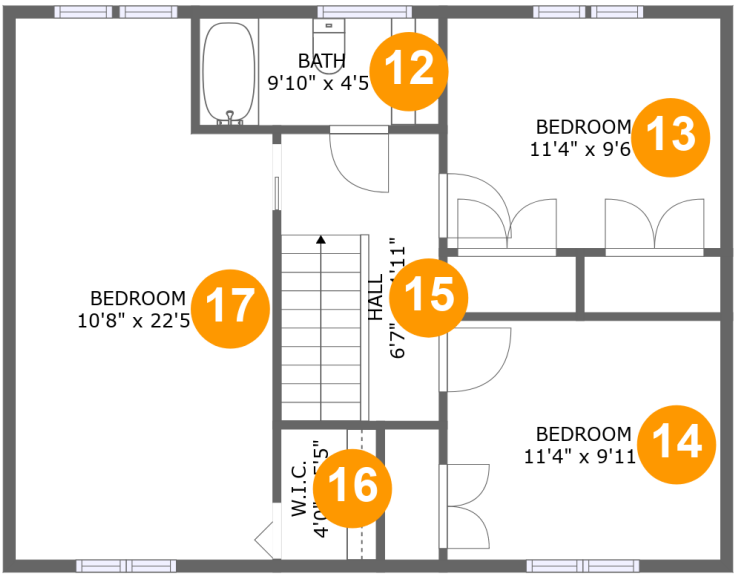
Room dimensions

Floor 2 Total sqft: 1561 Living area: 1298

#		Dimensions	sqft	Counted as living area
4	Family Room	23'5" x 13'9"	323 sq. ft	Yes
5	Kitchen	21'1" x 10'9"	227 sq. ft	Yes
6	Bath	7'2" x 6'8"	52 sq. ft	Yes
7	Primary Bedroom	10'8" x 23'6"	246 sq. ft	Yes
8	Foyer	7'6" x 14'9"	108 sq. ft	Yes
9	Dining Area	10'3" x 11'11"	116 sq. ft	Yes
10	Living Room	10'10" x 11'8"	124 sq. ft	Yes
11	Garage	11'2" x 21'7"	242 sq. ft	No

Home report

2208 Preston Rd,Peterborough,ON,CA

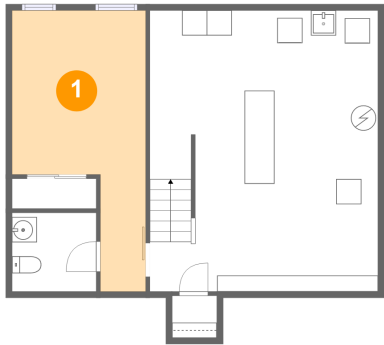


Room dimensions

Floor 3 Total sqft: 708 Living area: 708

#		Dimensions	sqft	Counted as living area
12	Bath	9'10" x 4'5"	44 sq. ft	Yes
13	Bedroom	11'4" x 9'6"	108 sq. ft	Yes
14	Bedroom	11'4" x 9'11"	112 sq. ft	Yes
15	Hall	6'7" x 11'11"	78 sq. ft	Yes
16	W.I.C.	4'0" x 5'5"	21 sq. ft	Yes
17	Bedroom	10'8" x 22'5"	223 sq. ft	Yes

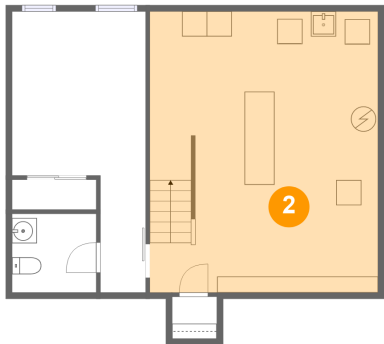
1 Floor 1 - Den



Dimensions: 10'8" x 22'5"
Area: 173 sq. ft
Counted as living area: Yes

Heated: Yes
Finished: Yes
Enclosed: Yes
Contiguous: Yes
Permitted: Yes
Wet space: No
Addition: No
Conversion: No

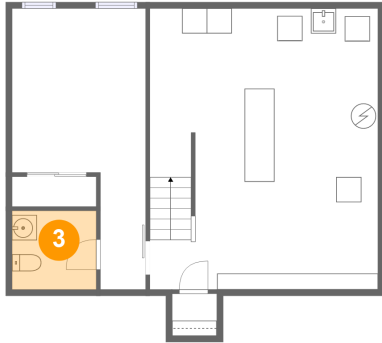
2 Floor 1 - Storage



Dimensions: 18'3" x 22'5"
Area: 409 sq. ft
Counted as living area: No

Heated: No
Finished: No
Enclosed: No
Contiguous: Yes
Permitted: Yes
Wet space: No
Addition: No
Conversion: No

3 Floor 1 - Bath



Dimensions: 6'9" x 6'3"
Area: 42 sq. ft
Counted as living area: Yes

Heated: Yes
Finished: Yes
Enclosed: Yes
Contiguous: Yes
Permitted: Yes
Wet space: Yes
Addition: No
Conversion: No

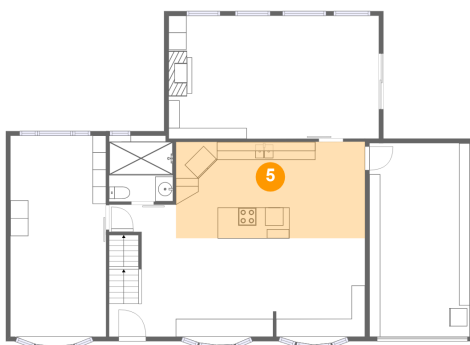
4 Floor 2 - Family Room



Dimensions: 23'5" x 13'9"
Area: 323 sq. ft
Counted as living area: Yes

Heated: Yes
Finished: Yes
Enclosed: Yes
Contiguous: Yes
Permitted: Yes
Wet space: No
Addition: No
Conversion: No

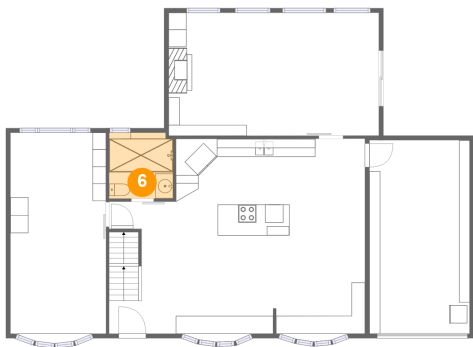
5 Floor 2 - Kitchen



Dimensions: 21'1" x 10'9"
Area: 227 sq. ft
Counted as living area: Yes

Heated: Yes
Finished: Yes
Enclosed: Yes
Contiguous: Yes
Permitted: Yes
Wet space: No
Addition: No
Conversion: No

6 Floor 2 - Bath



Dimensions: 7'2" x 6'8"
Area: 52 sq. ft
Counted as living area: Yes

Heated: Yes
Finished: Yes
Enclosed: Yes
Contiguous: Yes
Permitted: Yes
Wet space: Yes
Addition: No
Conversion: No

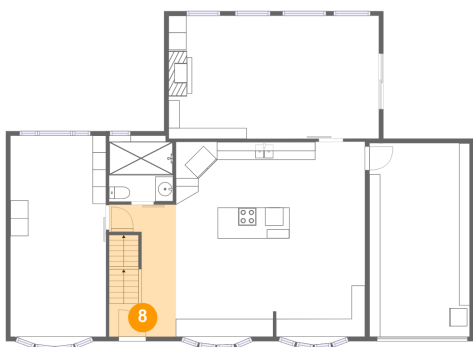
7 Floor 2 - Primary Bedroom



Dimensions: 10'8" x 23'6"
Area: 246 sq. ft
Counted as living area: Yes

Heated: Yes
Finished: Yes
Enclosed: Yes
Contiguous: Yes
Permitted: Yes
Wet space: No
Addition: No
Conversion: No

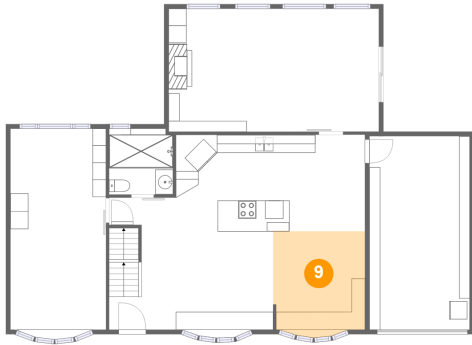
8 Floor 2 - Foyer



Dimensions: 7'6" x 14'9"
Area: 108 sq. ft
Counted as living area: Yes

Heated: Yes
Finished: Yes
Enclosed: Yes
Contiguous: Yes
Permitted: Yes
Wet space: No
Addition: No
Conversion: No

9 Floor 2 - Dining Area



Dimensions: 10'3" x 11'11"
Area: 116 sq. ft
Counted as living area: Yes

Heated: Yes
Finished: Yes
Enclosed: Yes
Contiguous: Yes
Permitted: Yes
Wet space: No
Addition: No
Conversion: No

10 Floor 2 - Living Room



Dimensions: 10'10" x 11'8"
Area: 124 sq. ft
Counted as living area: Yes

Heated: Yes
Finished: Yes
Enclosed: Yes
Contiguous: Yes
Permitted: Yes
Wet space: No
Addition: No
Conversion: No

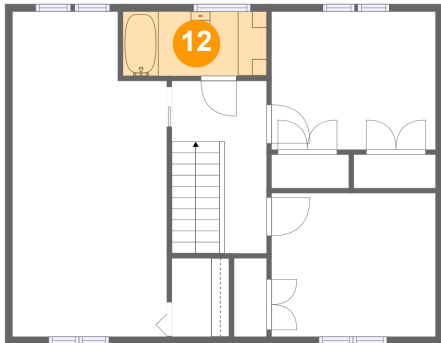
11 Floor 2 - Garage



Dimensions: 11'2" x 21'7"
Area: 242 sq. ft
Counted as living area: No

Heated: No
Finished: No
Enclosed: Yes
Contiguous: Yes
Permitted: Yes
Wet space: No
Addition: No
Conversion: No

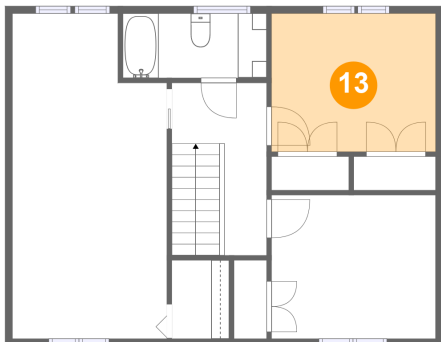
12 Floor 3 - Bath



Dimensions: 9'10" x 4'5"
Area: 44 sq. ft
Counted as living area: Yes

Heated: Yes
Finished: Yes
Enclosed: Yes
Contiguous: Yes
Permitted: Yes
Wet space: Yes
Addition: No
Conversion: No

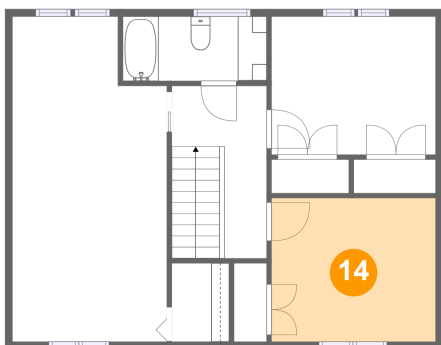
13 Floor 3 - Bedroom



Dimensions: 11'4" x 9'6"
Area: 108 sq. ft
Counted as living area: Yes

Heated: Yes
Finished: Yes
Enclosed: Yes
Contiguous: Yes
Permitted: Yes
Wet space: No
Addition: No
Conversion: No

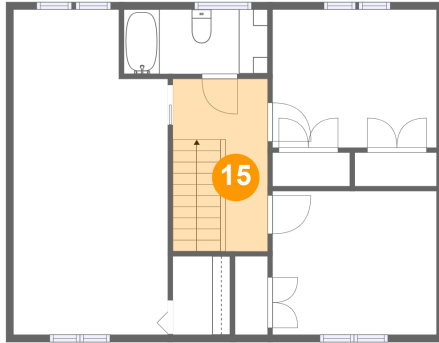
14 Floor 3 - Bedroom



Dimensions: 11'4" x 9'11"
Area: 112 sq. ft
Counted as living area: Yes

Heated: Yes
Finished: Yes
Enclosed: Yes
Contiguous: Yes
Permitted: Yes
Wet space: No
Addition: No
Conversion: No

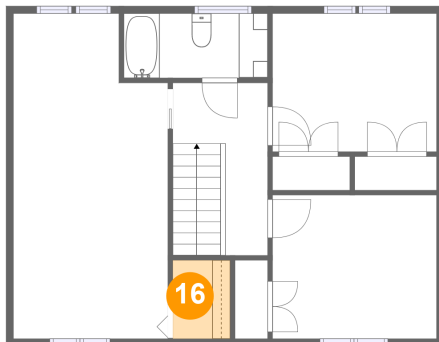
15 Floor 3 - Hall



Dimensions: 6'7" x 11'11"
Area: 78 sq. ft
Counted as living area: Yes

Heated: Yes
Finished: Yes
Enclosed: Yes
Contiguous: Yes
Permitted: Yes
Wet space: No
Addition: No
Conversion: No

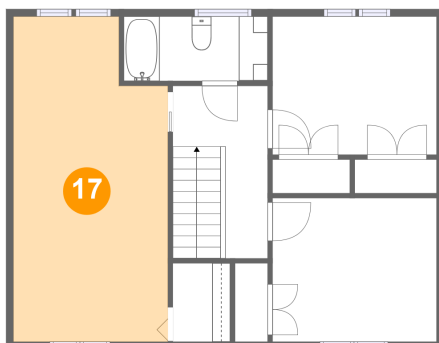
16 Floor 3 - W.I.C.



Dimensions: 4'0" x 5'5"
Area: 21 sq. ft
Counted as living area: Yes

Heated: Yes
Finished: Yes
Enclosed: Yes
Contiguous: Yes
Permitted: Yes
Wet space: No
Addition: No
Conversion: No

17 Floor 3 - Bedroom



Dimensions: 10'8" x 22'5"
Area: 223 sq. ft
Counted as living area: Yes

Heated: Yes
Finished: Yes
Enclosed: Yes
Contiguous: Yes
Permitted: Yes
Wet space: No
Addition: No
Conversion: No