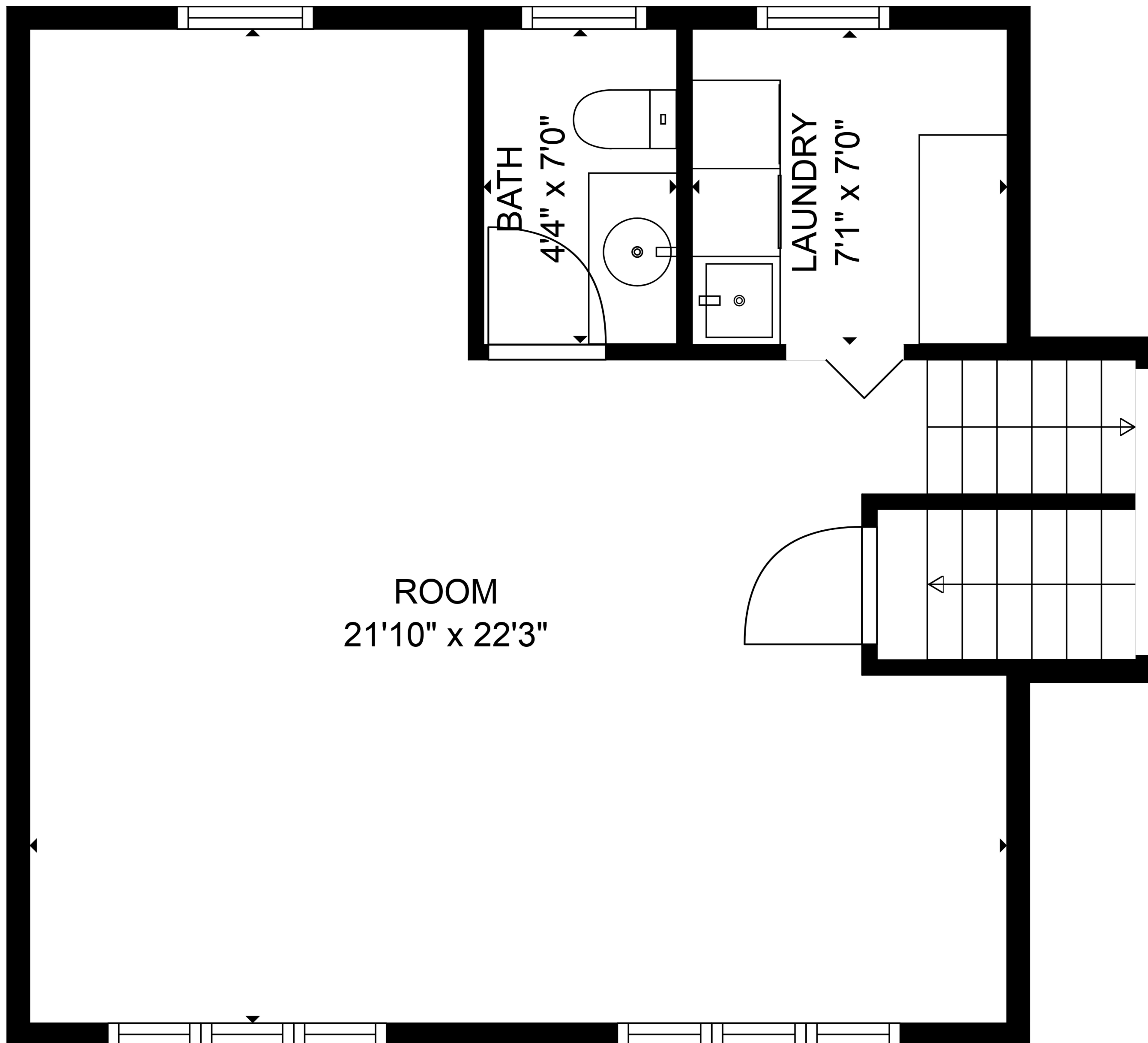


BASEMENT  
23'5" x 22'2"

TOTAL: 1674 sq. ft  
BELOW GROUND: 0 sq. ft, FLOOR 2: 505 sq. ft, FLOOR 3: 551 sq. ft, FLOOR 4: 618 sq. ft  
EXCLUDED AREAS: BASEMENT: 507 sq. ft, UNDEFINED: 21 sq. ft, BAY WINDOW: 7 sq. ft

SIZES AND DIMENSIONS ARE APPROXIMATE, ACTUAL MAY VARY.

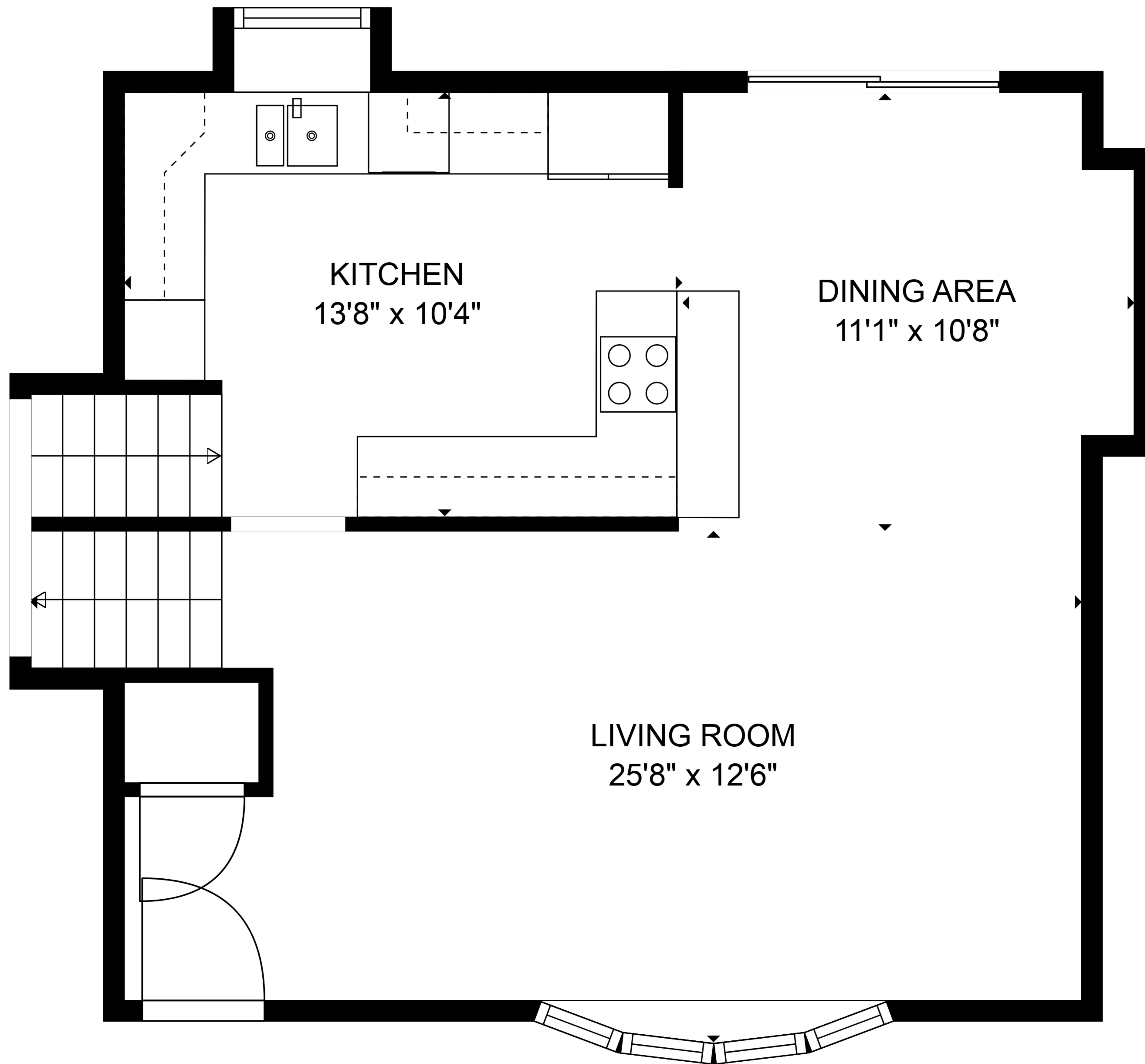


ROOM  
21'10" x 22'3"

TOTAL: 1674 sq. ft

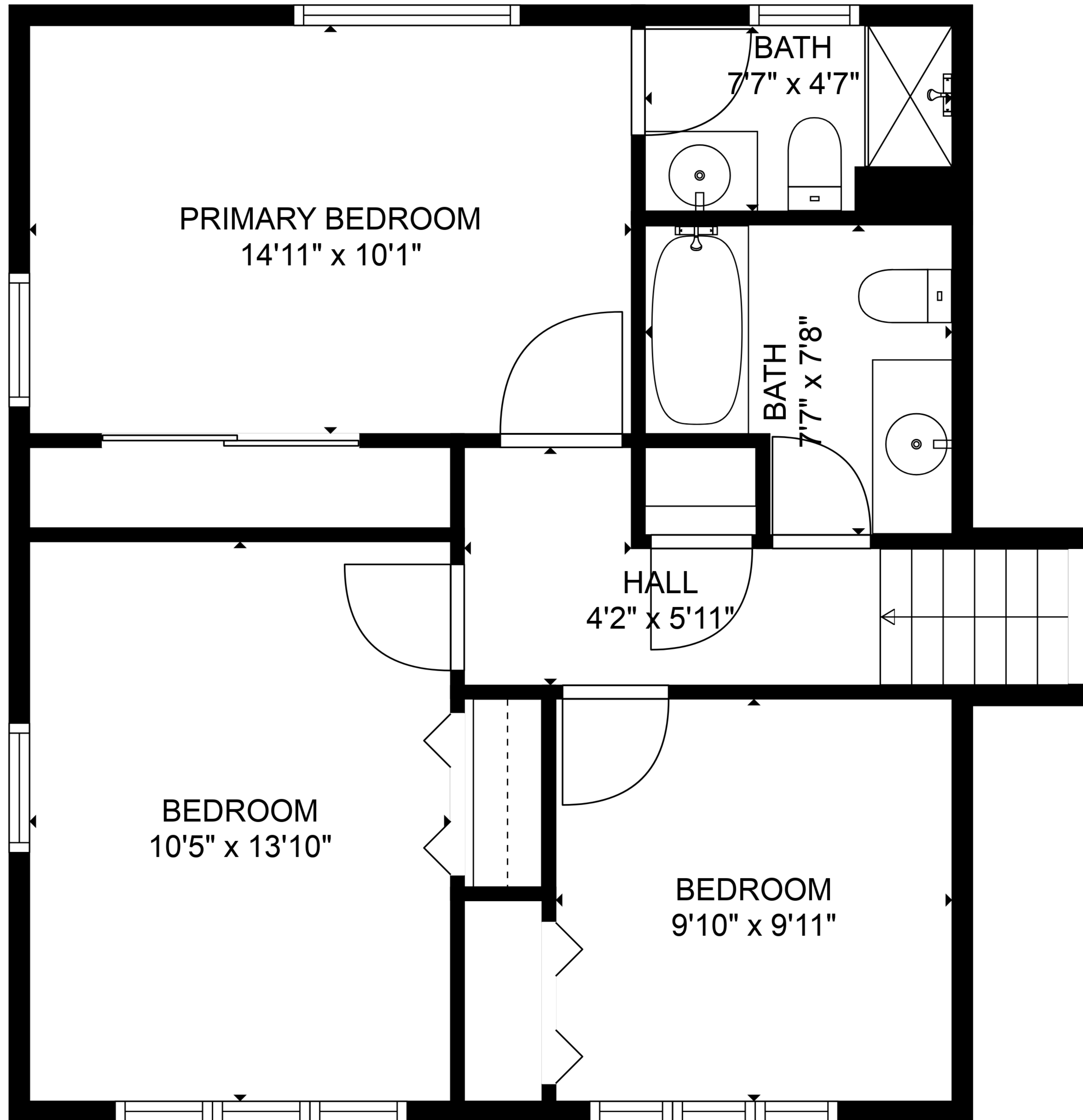
BELOW GROUND: 0 sq. ft, FLOOR 2: 505 sq. ft, FLOOR 3: 551 sq. ft, FLOOR 4: 618 sq. ft  
EXCLUDED AREAS: BASEMENT: 507 sq. ft, UNDEFINED: 21 sq. ft, BAY WINDOW: 7 sq. ft

SIZES AND DIMENSIONS ARE APPROXIMATE, ACTUAL MAY VARY.



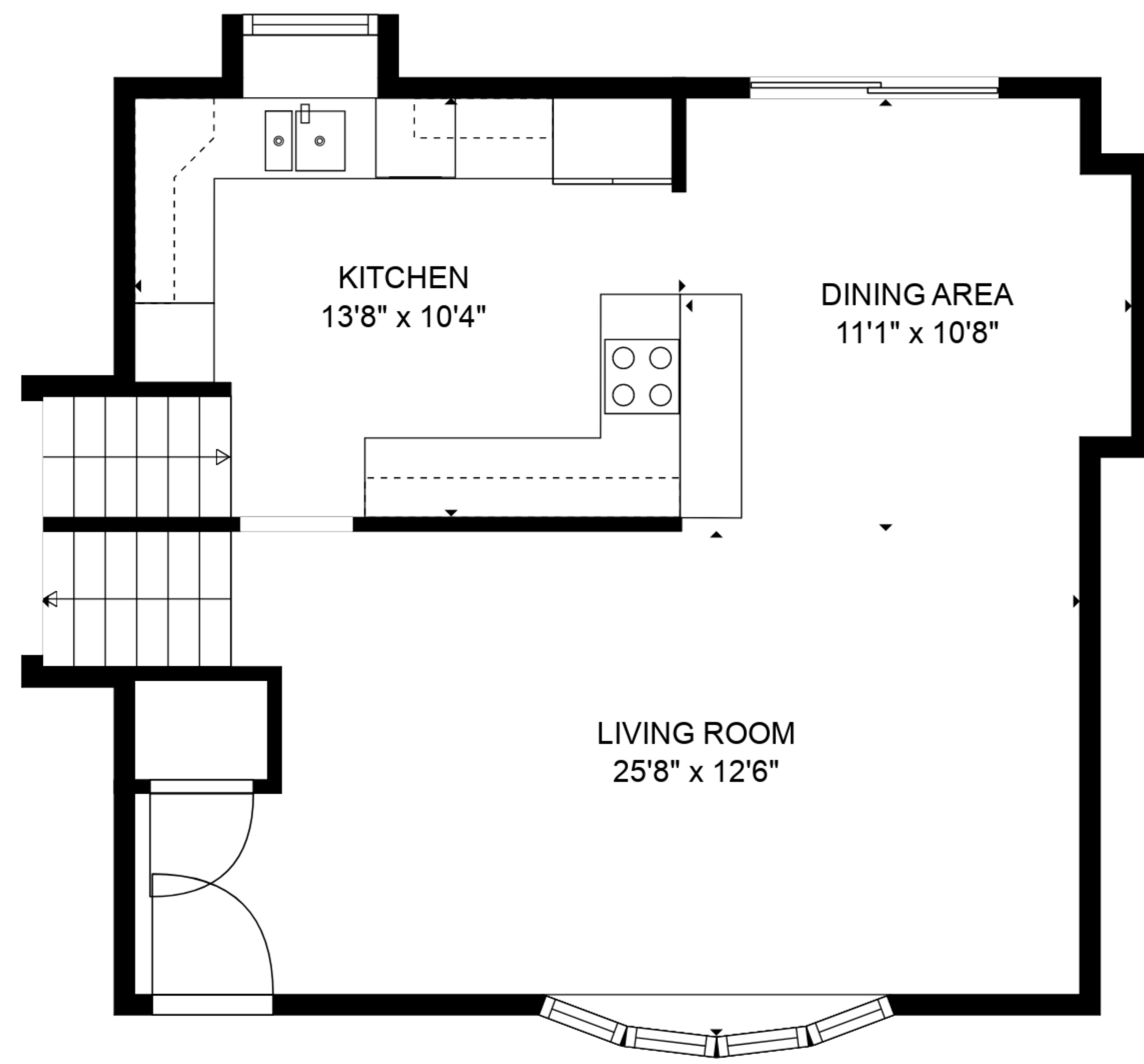
TOTAL: 1674 sq. ft  
 BELOW GROUND: 0 sq. ft, FLOOR 2: 505 sq. ft, FLOOR 3: 551 sq. ft, FLOOR 4: 618 sq. ft  
 EXCLUDED AREAS: BASEMENT: 507 sq. ft, UNDEFINED: 21 sq. ft, BAY WINDOW: 7 sq. ft

SIZES AND DIMENSIONS ARE APPROXIMATE, ACTUAL MAY VARY.

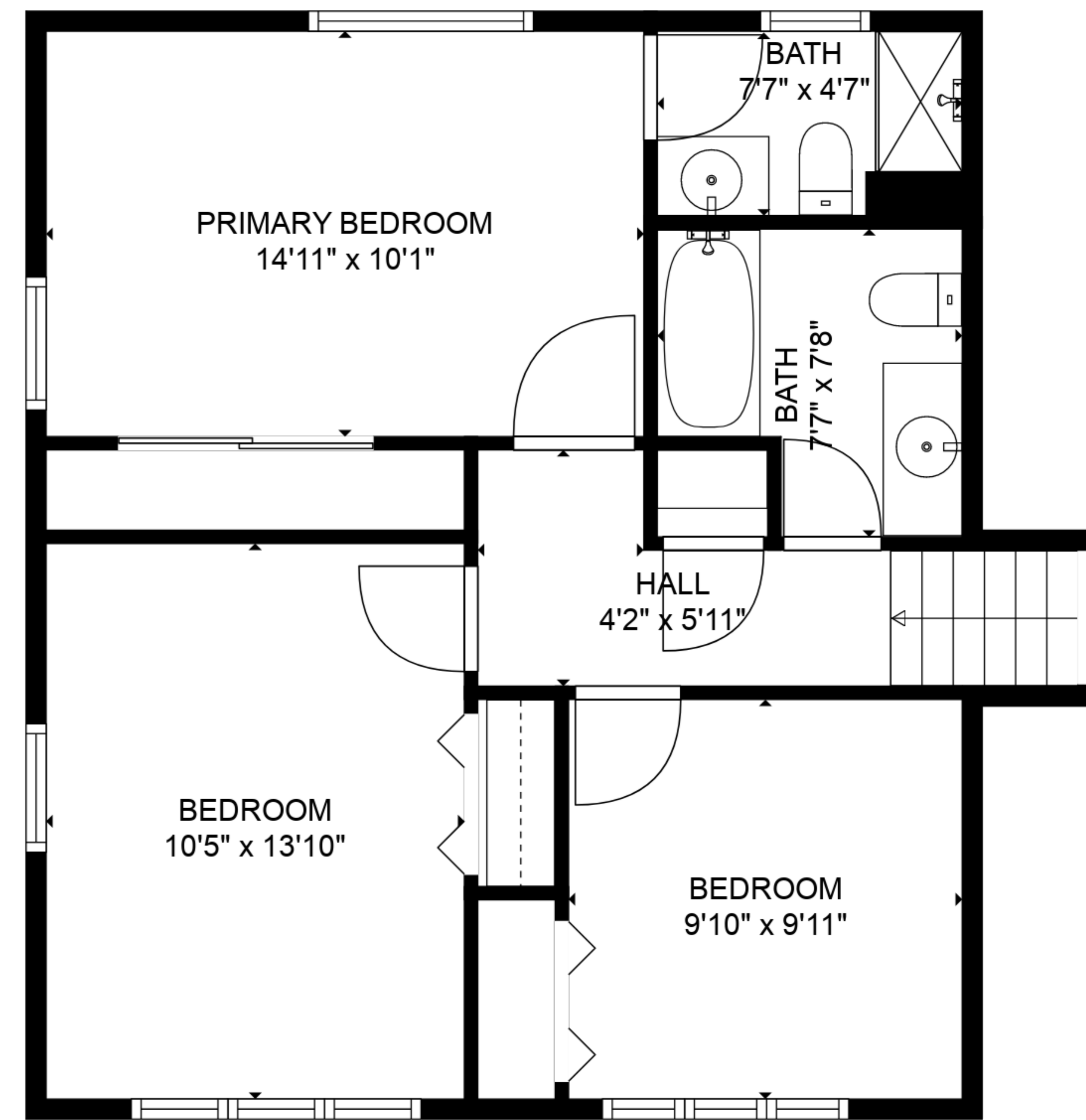


TOTAL: 1674 sq. ft  
 BELOW GROUND: 0 sq. ft, FLOOR 2: 505 sq. ft, FLOOR 3: 551 sq. ft, FLOOR 4: 618 sq. ft  
 EXCLUDED AREAS: BASEMENT: 507 sq. ft, UNDEFINED: 21 sq. ft, BAY WINDOW: 7 sq. ft

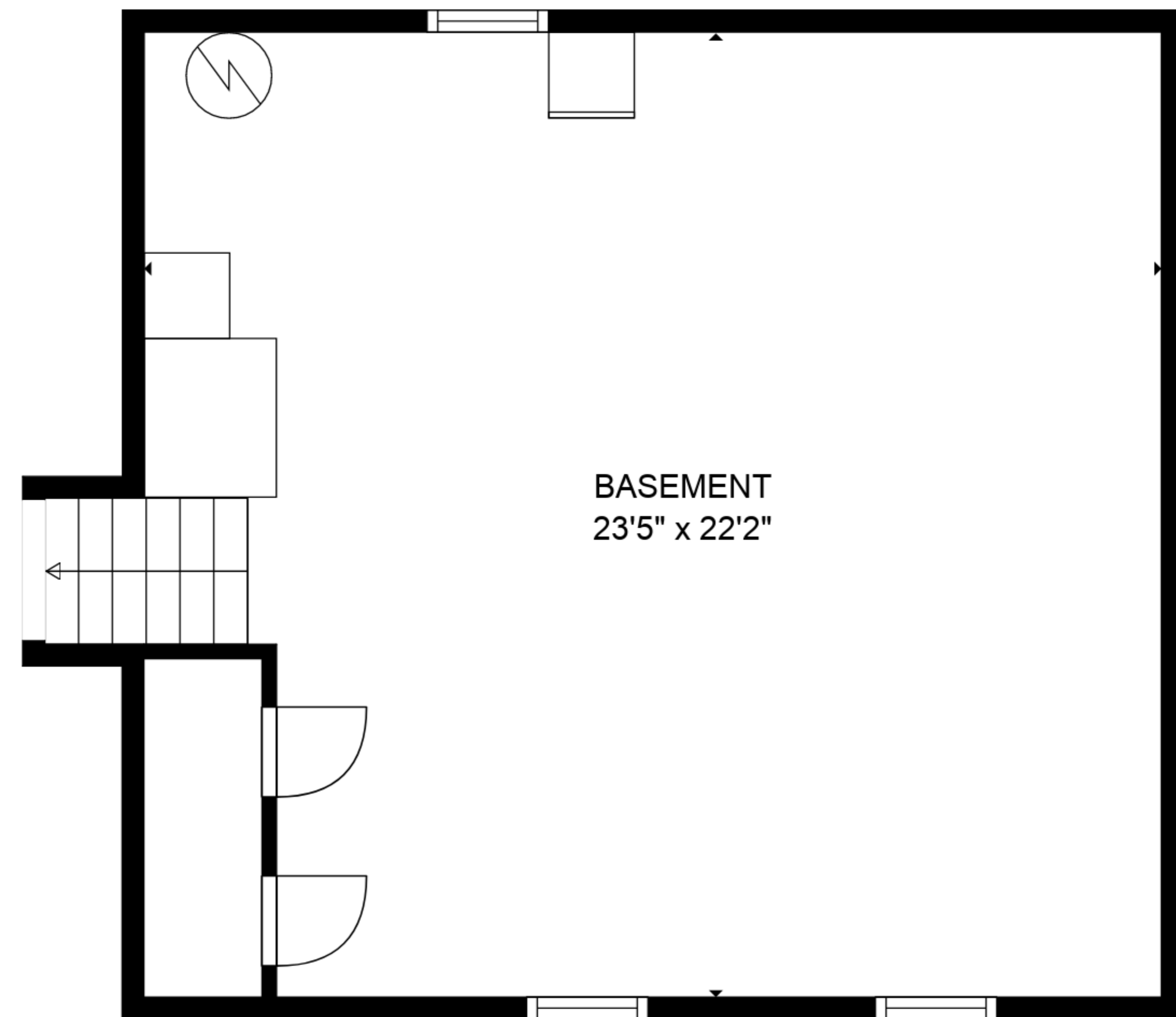
SIZES AND DIMENSIONS ARE APPROXIMATE, ACTUAL MAY VARY.



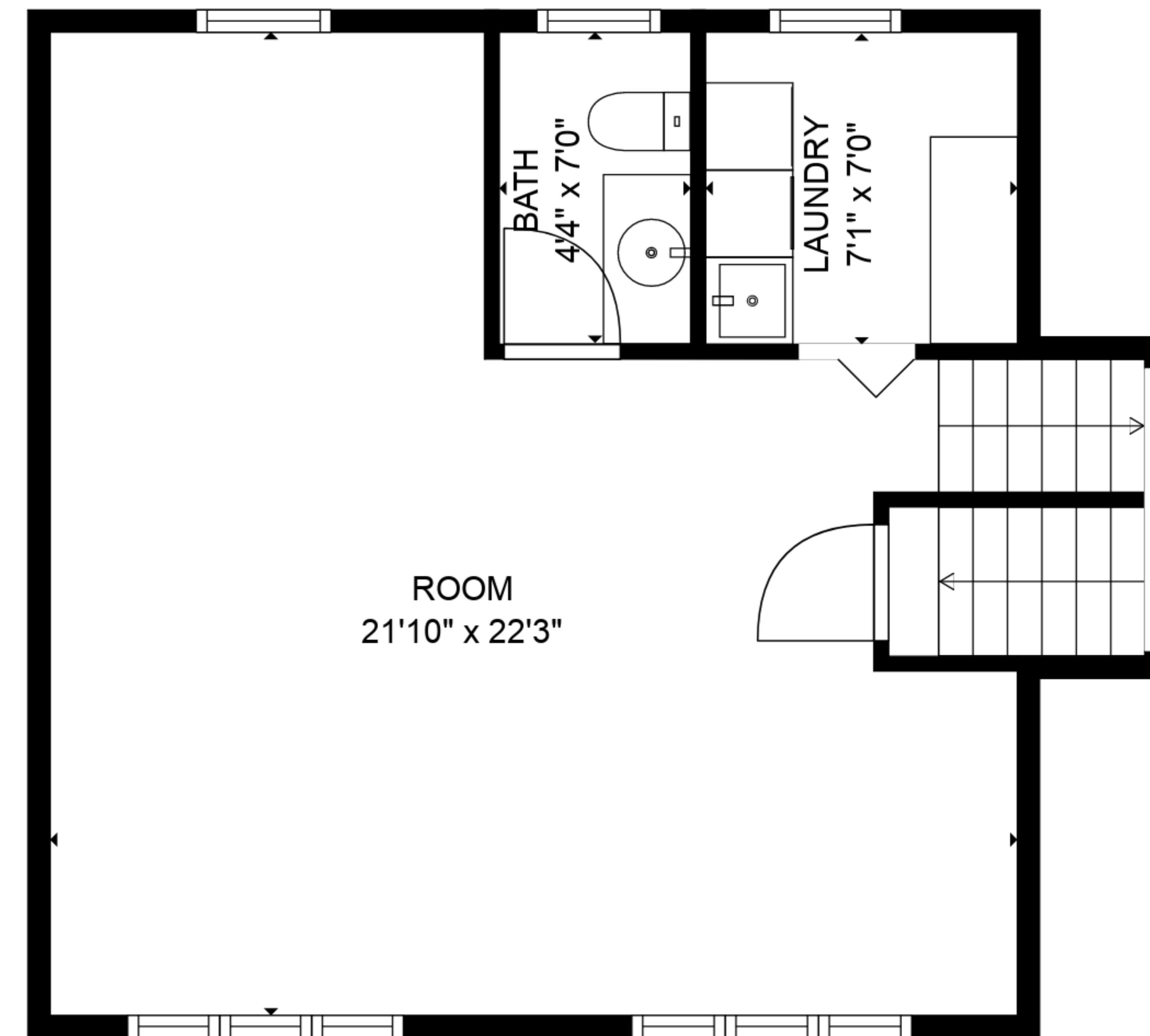
FLOOR 3



FLOOR 4



FLOOR 1



FLOOR 2

TOTAL: 1674 sq. ft  
 BELOW GROUND: 0 sq. ft, FLOOR 2: 505 sq. ft, FLOOR 3: 551 sq. ft, FLOOR 4: 618 sq. ft  
 EXCLUDED AREAS: BASEMENT: 507 sq. ft, UNDEFINED: 21 sq. ft, BAY WINDOW: 7 sq. ft

SIZES AND DIMENSIONS ARE APPROXIMATE, ACTUAL MAY VARY.