

622 South 8th Avenue, College, Pocatello, Bannock County, Idaho, United States, 83201




Property Summary

 **0** garages

 **2** bedrooms

 **1** bathrooms

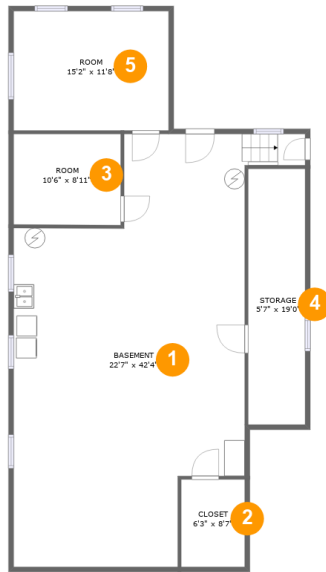
 **0** half baths

 **2** floors

 **1,538** Gross Living Area sqft

 **3,265** total sqft

622 South 8th Avenue, College, Pocatello, Bannock County, Idaho, United States, 83201



Room Dimensions

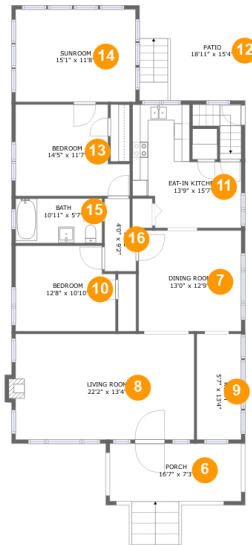
Floor 1

Total sqft: 1390

Living area: 66

#	Room name	Dimensions	Area (sqft)	Counted as Living Area
1	Basement	22'7" x 42'4"	817 sq. ft	No
2	Closet	6'3" x 8'7"	53 sq. ft	Yes
3	Room	10'6" x 8'11"	93 sq. ft	No
4	Storage	5'7" x 19'0"	139 sq. ft	No
5	Room	15'2" x 11'8"	177 sq. ft	No

622 South 8th Avenue, College, Pocatello, Bannock County, Idaho, United States, 83201



Room Dimensions

Floor 2

Total sqft: 1875

Living area: 1472

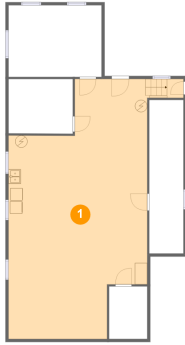
#	Room name	Dimensions	Area (sqft)	Counted as Living Area
6	Porch	16'7" x 7'3"	121 sq. ft	No
7	Dining Room	13'0" x 12'9"	165 sq. ft	Yes
8	Living Room	22'2" x 13'4"	303 sq. ft	Yes
9	Room	5'7" x 13'4"	75 sq. ft	Yes
10	Bedroom	12'8" x 10'10"	130 sq. ft	Yes
11	Eat-in Kitchen	13'9" x 15'7"	156 sq. ft	Yes
12	Patio	18'11" x 15'4"	279 sq. ft	No
13	Bedroom	14'5" x 11'7"	146 sq. ft	Yes
14	Sunroom	15'1" x 11'8"	177 sq. ft	Yes
15	Bath	10'11" x 5'7"	61 sq. ft	Yes
16	Hall	4'0" x 9'2"	33 sq. ft	Yes

Scan captured on Wed, 26 Jun 2024 17:55:30 GMT

Information is calculated by CubiCasa technology; deemed highly reliable but not guaranteed.

622 South 8th Avenue, College, Pocatello, Bannock County, Idaho, United States, 83201

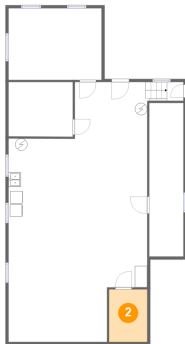
1 Floor 1 - Basement



Dimensions: 22'7" x 42'4"
Area: 817 sq. ft
Counted as Living Area: No

Heated: No
Finished: No
Enclosed: Yes
Contiguous: Yes
Permitted: Yes
Wet Space: No
Addition: No
Conversion: No

2 Floor 1 - Closet

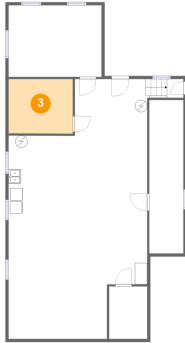


Dimensions: 6'3" x 8'7"
Area: 53 sq. ft
Counted as Living Area:
Yes

Heated: Yes
Finished: Yes
Enclosed: Yes
Contiguous:
Yes
Permitted: Yes
Wet Space: No
Addition: No
Conversion: No

622 South 8th Avenue, College, Pocatello, Bannock County, Idaho, United States, 83201

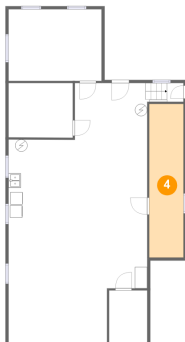
3 Floor 1 - Room



Dimensions: 10'6" x 8'11"
Area: 93 sq. ft
Counted as Living Area: No

Heated: Yes
Finished: Yes
Enclosed: Yes
Contiguous: No
Permitted: Yes
Wet Space: No
Addition: No
Conversion: No

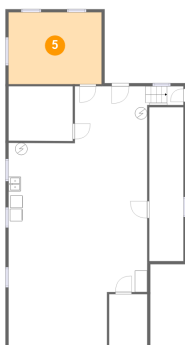
4 Floor 1 - Storage



Dimensions: 5'7" x 19'0"
Area: 139 sq. ft
Counted as Living Area: No

Heated: No
Finished: No
Enclosed: No
Contiguous: Yes
Permitted: Yes
Wet Space: No
Addition: No
Conversion: No

5 Floor 1 - Room



Dimensions: 15'2" x 11'8"
Area: 177 sq. ft
Counted as Living Area: No

Heated: Yes
Finished: Yes
Enclosed: Yes
Contiguous: No
Permitted: Yes
Wet Space: No
Addition: No
Conversion: No

622 South 8th Avenue, College, Pocatello, Bannock County, Idaho, United States, 83201

6 Floor 2 - Porch



Dimensions: 16'7" x 7'3"
Area: 121 sq. ft
Counted as Living Area: No

Heated: No
Finished: Yes
Enclosed: No
Contiguous: Yes
Permitted: Yes
Wet Space: No
Addition: No
Conversion: No

7 Floor 2 - Dining Room



Dimensions: 13'0" x 12'9"
Area: 165 sq. ft
Counted as Living Area:
Yes

Heated: Yes
Finished: Yes
Enclosed: Yes
Contiguous:
Yes
Permitted: Yes
Wet Space: No
Addition: No
Conversion: No

8 Floor 2 - Living Room



Dimensions: 22'2" x 13'4"
Area: 303 sq. ft
Counted as Living Area:
Yes

Heated: Yes
Finished: Yes
Enclosed: Yes
Contiguous:
Yes
Permitted: Yes
Wet Space: No
Addition: No
Conversion: No

622 South 8th Avenue, College, Pocatello, Bannock County, Idaho, United States, 83201

9 Floor 2 - Room



Dimensions: 5'7" x 13'4"
Area: 75 sq. ft
Counted as Living Area:
Yes

Heated: Yes
Finished: Yes
Enclosed: Yes
Contiguous:
Yes
Permitted: Yes
Wet Space: No
Addition: No
Conversion: No

10 Floor 2 - Bedroom



Dimensions: 12'8" x 10'10"
Area: 130 sq. ft
Counted as Living Area:
Yes

Heated: Yes
Finished: Yes
Enclosed: Yes
Contiguous:
Yes
Permitted: Yes
Wet Space: No
Addition: No
Conversion: No

11 Floor 2 - Eat-in Kitchen



Dimensions: 13'9" x 15'7"
Area: 156 sq. ft
Counted as Living Area:
Yes

Heated: Yes
Finished: Yes
Enclosed: Yes
Contiguous:
Yes
Permitted: Yes
Wet Space: No
Addition: No
Conversion: No

622 South 8th Avenue, College, Pocatello, Bannock County, Idaho, United States, 83201

12 Floor 2 - Patio



Dimensions: 18'11" x 15'4"
Area: 279 sq. ft
Counted as Living Area: No

Heated: No
Finished: Yes
Enclosed: No
Contiguous: Yes
Permitted: Yes
Wet Space: No
Addition: No
Conversion: No

13 Floor 2 - Bedroom



Dimensions: 14'5" x 11'7"
Area: 146 sq. ft
Counted as Living Area:
Yes

Heated: Yes
Finished: Yes
Enclosed: Yes
Contiguous:
Yes
Permitted: Yes
Wet Space: No
Addition: No
Conversion: No

14 Floor 2 - Sunroom

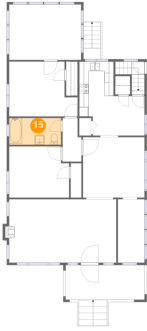


Dimensions: 15'1" x 11'8"
Area: 177 sq. ft
Counted as Living Area:
Yes

Heated: Yes
Finished: Yes
Enclosed: Yes
Contiguous:
Yes
Permitted: Yes
Wet Space: No
Addition: No
Conversion: No

622 South 8th Avenue, College, Pocatello, Bannock County, Idaho, United States, 83201

15 Floor 2 - Bath



Dimensions: 10'11" x 5'7"
Area: 61 sq. ft
Counted as Living Area:
Yes

Heated: Yes
Finished: Yes
Enclosed: Yes
Contiguous:
Yes
Permitted: Yes
Wet Space: Yes
Addition: No
Conversion: No

16 Floor 2 - Hall



Dimensions: 4'0" x 9'2"
Area: 33 sq. ft
Counted as Living Area:
Yes

Heated: Yes
Finished: Yes
Enclosed: Yes
Contiguous:
Yes
Permitted: Yes
Wet Space: No
Addition: No
Conversion: No