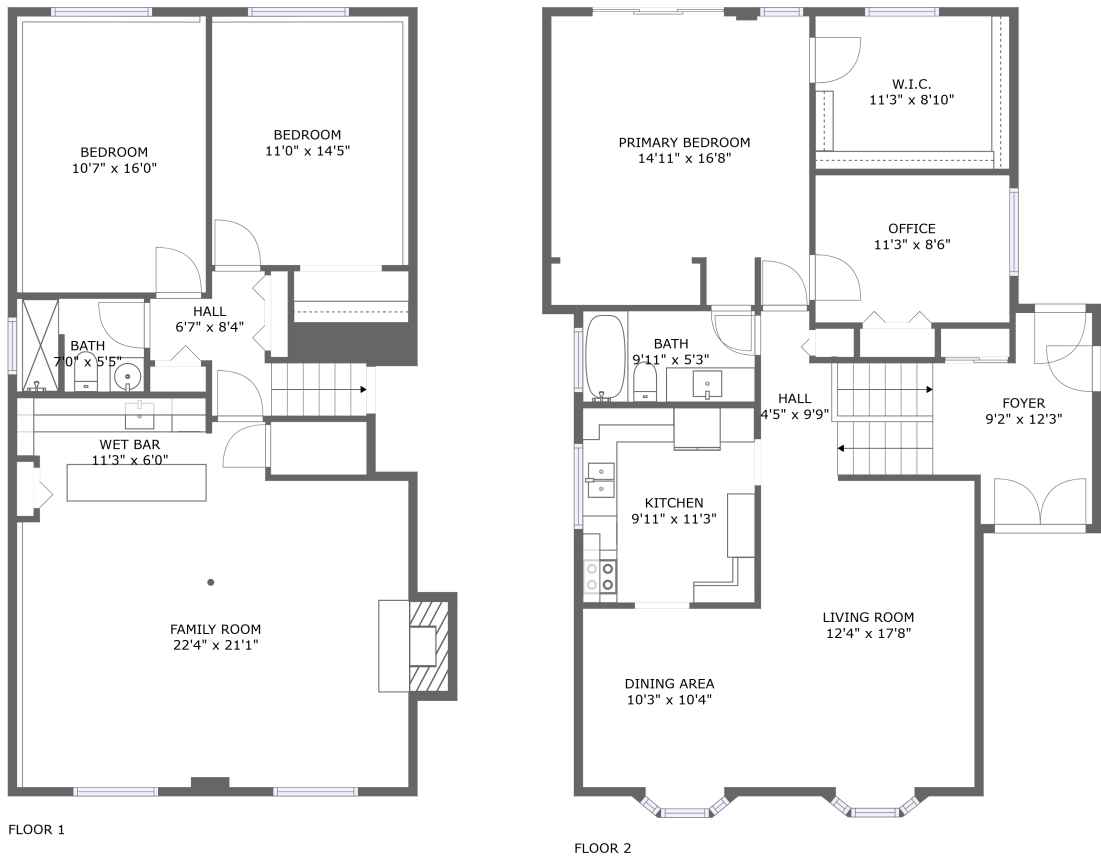


Home report

16 Coolbrook Crescent, Munster, Munster, Ontario, Canada, K0A 3P0




Total Area: 2146 sq. ft

Floor 1: 992 sq. ft, Floor 2: 1154 sq. ft

Excluded: Fireplace 14 sq. ft, Embedded window 12 sq. ft, Walls: 145 sq. ft

Property summary

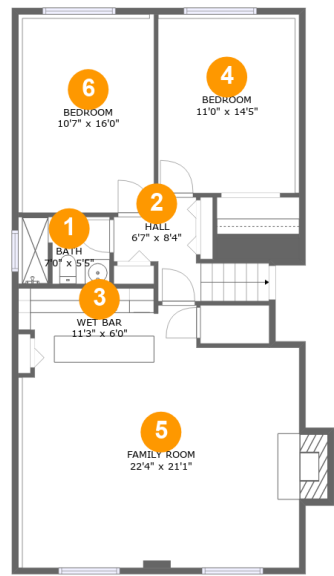
 2 Floors

 3 Bedrooms

 2 Bathrooms

Home report

16 Coolbrook Crescent, Munster, Munster, Ontario, Canada, K0A 3P0



Room dimensions

Floor 1 Total:992sqft Excluded: 14sqft

#		Max Dimensions	sqft	Included
1	Bath	7'0" x 5'5"	39 sq. ft	Yes
2	Hall	6'7" x 8'4"	56 sq. ft	Yes
3	Wet Bar	11'3" x 6'0"	63 sq. ft	Yes
4	Bedroom	11'0" x 14'5"	163 sq. ft	Yes
5	Family Room	22'4" x 21'1"	408 sq. ft	Yes
6	Bedroom	10'7" x 16'0"	174 sq. ft	Yes

Home report

16 Coolbrook Crescent, Munster, Munster, Ontario, Canada, K0A 3P0



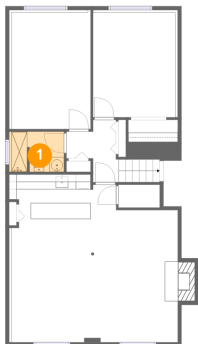
Room dimensions

Floor 2 Total:1154sqft Excluded: 12sqft

#		Max Dimensions	sqft	Included
7	Bath	9'11" x 5'3"	52 sq. ft	Yes
8	Hall	4'5" x 9'9"	39 sq. ft	Yes
9	W.I.C.	11'3" x 8'10"	99 sq. ft	Yes
10	Office	11'3" x 8'6"	95 sq. ft	Yes
11	Dining Area	10'3" x 10'4"	106 sq. ft	Yes
12	Living Room	12'4" x 17'8"	218 sq. ft	Yes
13	Primary Bedroom	14'11" x 16'8"	223 sq. ft	Yes
14	Kitchen	9'11" x 11'3"	112 sq. ft	Yes
15	Foyer	9'2" x 12'3"	126 sq. ft	Yes

16 Coolbrook Crescent, Munster, Munster, Ontario, Canada, K0A 3P0

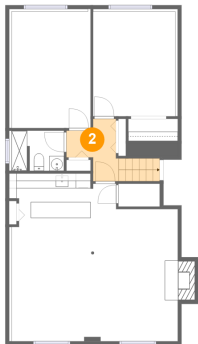
1 Floor 1 - Bath



Max Dimensions: 7'0" x 5'5"
Calculated Area: 39 sq. ft
Included: Yes

Heated: Yes
Finished: Yes
Enclosed: Yes
Contiguous: Yes
Permitted: Yes
Wet space: Yes
Addition: No
Conversion: No

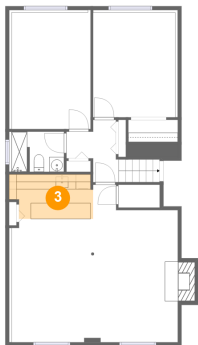
2 Floor 1 - Hall



Max Dimensions: 6'7" x 8'4"
Calculated Area: 56 sq. ft
Included: Yes

Heated: Yes
Finished: Yes
Enclosed: Yes
Contiguous: Yes
Permitted: Yes
Wet space: No
Addition: No
Conversion: No

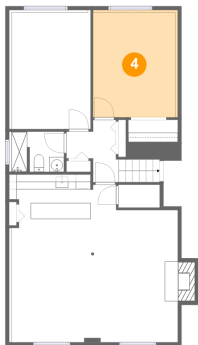
3 Floor 1 - Wet Bar



Max Dimensions: 11'3" x 6'0"
Calculated Area: 63 sq. ft
Included: Yes

Heated: Yes
Finished: Yes
Enclosed: Yes
Contiguous: Yes
Permitted: Yes
Wet space: No
Addition: No
Conversion: No

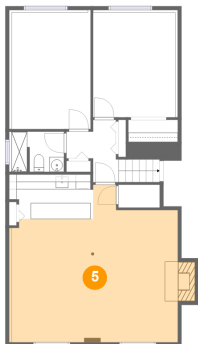
4 Floor 1 - Bedroom



Max Dimensions: 11'0" x 14'5"
Calculated Area: 163 sq. ft
Included: Yes

Heated: Yes
Finished: Yes
Enclosed: Yes
Contiguous: Yes
Permitted: Yes
Wet space: No
Addition: No
Conversion: No

5 Floor 1 - Family Room

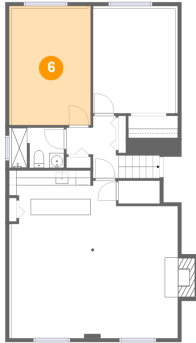


Max Dimensions: 22'4" x 21'1"
Calculated Area: 408 sq. ft
Included: Yes

Heated: Yes
Finished: Yes
Enclosed: Yes
Contiguous: Yes
Permitted: Yes
Wet space: No
Addition: No
Conversion: No

16 Coolbrook Crescent, Munster, Munster, Ontario, Canada, K0A 3P0

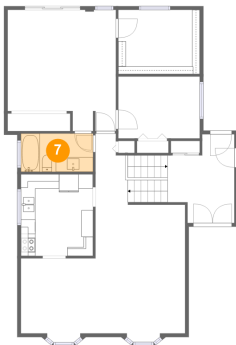
6 Floor 1 - Bedroom



Max Dimensions: 10'7" x 16'0"
Calculated Area: 174 sq. ft
Included: Yes

Heated: Yes
Finished: Yes
Enclosed: Yes
Contiguous: Yes
Permitted: Yes
Wet space: No
Addition: No
Conversion: No

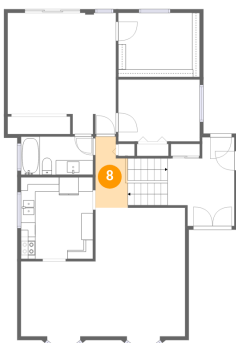
7 Floor 2 - Bath



Max Dimensions: 9'11" x 5'3"
Calculated Area: 52 sq. ft
Included: Yes

Heated: Yes
Finished: Yes
Enclosed: Yes
Contiguous: Yes
Permitted: Yes
Wet space: Yes
Addition: No
Conversion: No

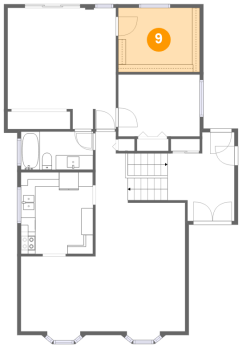
8 Floor 2 - Hall



Max Dimensions: 4'5" x 9'9"
Calculated Area: 39 sq. ft
Included: Yes

Heated: Yes
Finished: Yes
Enclosed: Yes
Contiguous: Yes
Permitted: Yes
Wet space: No
Addition: No
Conversion: No

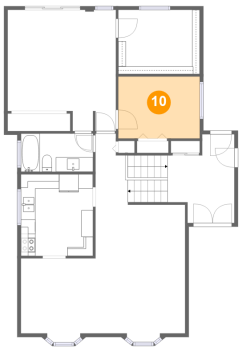
9 Floor 2 - W.I.C.



Max Dimensions: 11'3" x 8'10"
Calculated Area: 99 sq. ft
Included: Yes

Heated: Yes
Finished: Yes
Enclosed: Yes
Contiguous: Yes
Permitted: Yes
Wet space: No
Addition: No
Conversion: No

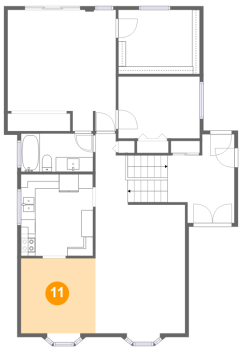
10 Floor 2 - Office



Max Dimensions: 11'3" x 8'6"
Calculated Area: 95 sq. ft
Included: Yes

Heated: Yes
Finished: Yes
Enclosed: Yes
Contiguous: Yes
Permitted: Yes
Wet space: No
Addition: No
Conversion: No

11 Floor 2 - Dining Area

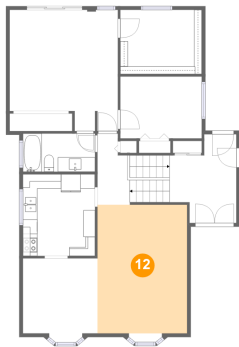


Max Dimensions: 10'3" x 10'4"
Calculated Area: 106 sq. ft
Included: Yes

Heated: Yes
Finished: Yes
Enclosed: Yes
Contiguous: Yes
Permitted: Yes
Wet space: No
Addition: No
Conversion: No

16 Coolbrook Crescent, Munster, Munster, Ontario, Canada, K0A 3P0

12 Floor 2 - Living Room



Max Dimensions: 12'4" x 17'8"
Calculated Area: 218 sq. ft
Included: Yes

Heated: Yes
Finished: Yes
Enclosed: Yes
Contiguous: Yes
Permitted: Yes
Wet space: No
Addition: No
Conversion: No

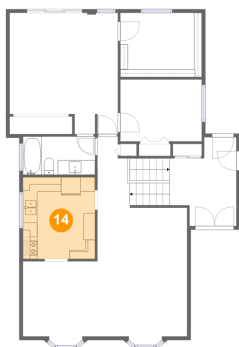
13 Floor 2 - Primary Bedroom



Max Dimensions: 14'11" x 16'8"
Calculated Area: 223 sq. ft
Included: Yes

Heated: Yes
Finished: Yes
Enclosed: Yes
Contiguous: Yes
Permitted: Yes
Wet space: No
Addition: No
Conversion: No

14 Floor 2 - Kitchen

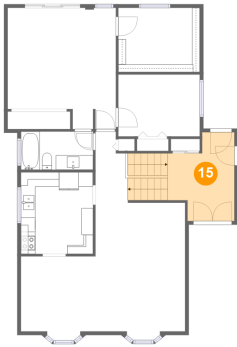


Max Dimensions: 9'11" x 11'3"
Calculated Area: 112 sq. ft
Included: Yes

Heated: Yes
Finished: Yes
Enclosed: Yes
Contiguous: Yes
Permitted: Yes
Wet space: No
Addition: No
Conversion: No

16 Coolbrook Crescent, Munster, Munster, Ontario, Canada, K0A 3P0

15 Floor 2 - Foyer



Max Dimensions: 9'2" x 12'3"
Calculated Area: 126 sq. ft
Included: Yes

Heated: Yes
Finished: Yes
Enclosed: Yes
Contiguous: Yes
Permitted: Yes
Wet space: No
Addition: No
Conversion: No