


Home report


4821 Easthill Drive, Orander Park, Cave Spring, Roanoke,
Roanoke County, Virginia, United States, 24018



Property summary


 **1** Garages

 **4** Bedrooms

 **3** Bathrooms

 **0** Half baths

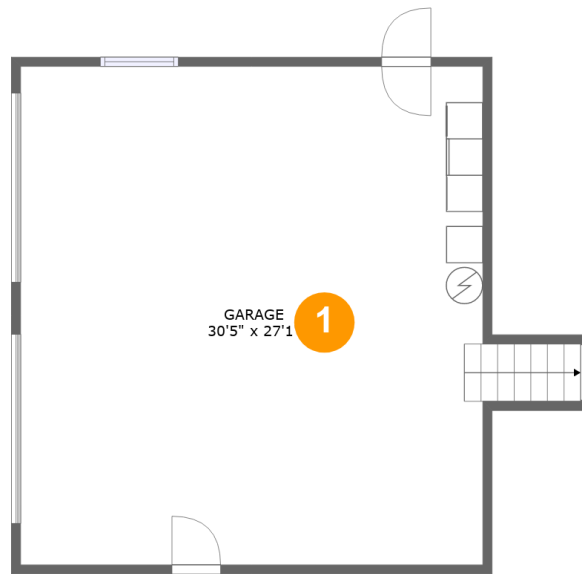
 **4** Floors

 **2,354**
Gross living
area sqft

 **3,330**
Total sqft

Home report

4821 Easthill Drive, Orander Park, Cave Spring, Roanoke,
Roanoke County, Virginia, United States, 24018



Room dimensions

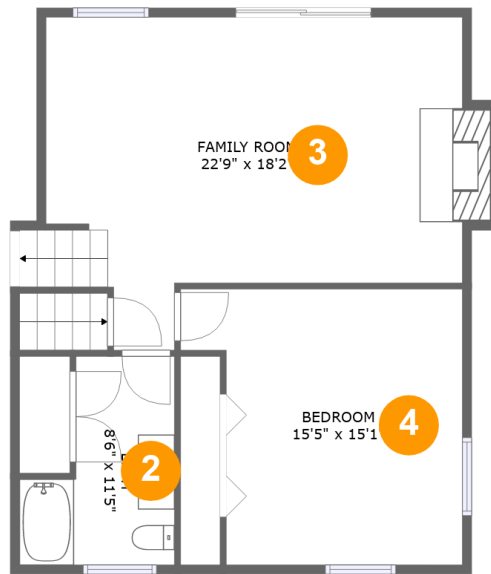
Floor 1

Total sqft: 754 Living area: 0

#		Dimensions	sqft	Counted as living area
1	Garage	30'5" x 27'1"	695 sq. ft	No

Home report

4821 Easthill Drive, Orander Park, Cave Spring, Roanoke,
Roanoke County, Virginia, United States, 24018



Room dimensions

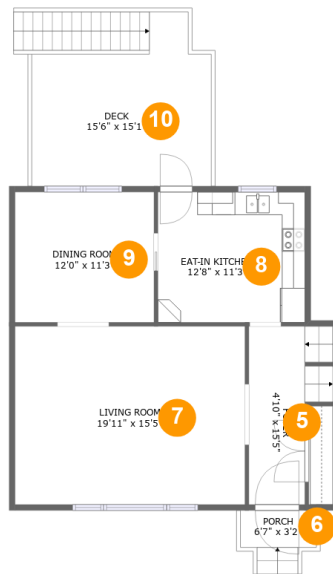
Floor 2

Total sqft: 772 Living area: 761

#		Dimensions	sqft	Counted as living area
2	Bath	8'6" x 11'5"	76 sq. ft	Yes
3	Family Room	22'9" x 18'2"	356 sq. ft	Yes
4	Bedroom	15'5" x 15'1"	202 sq. ft	Yes

Home report

**4821 Easthill Drive, Orander Park, Cave Spring, Roanoke,
Roanoke County, Virginia, United States, 24018**



Room dimensions

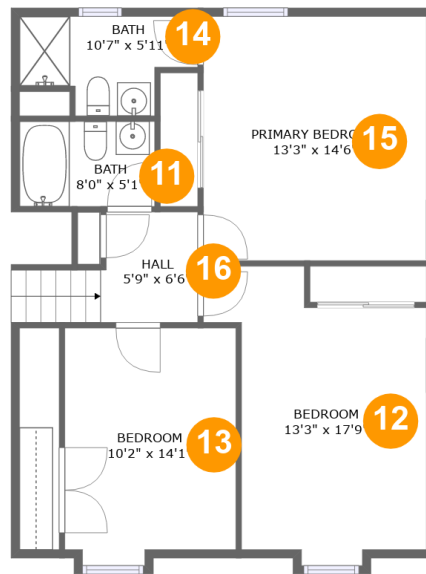
Floor 3

Total sqft: 984 Living area: 773

#		Dimensions	sqft	Counted as living area
5	Foyer	4'10" x 15'5"	90 sq. ft	Yes
6	Porch	6'7" x 3'2"	21 sq. ft	No
7	Living Room	19'11" x 15'5"	307 sq. ft	Yes
8	Eat-in Kitchen	12'8" x 11'3"	144 sq. ft	Yes
9	Dining Room	12'0" x 11'3"	136 sq. ft	Yes
10	Deck	15'6" x 15'1"	190 sq. ft	No

Home report

4821 Easthill Drive, Orander Park, Cave Spring, Roanoke,
Roanoke County, Virginia, United States, 24018



Room dimensions

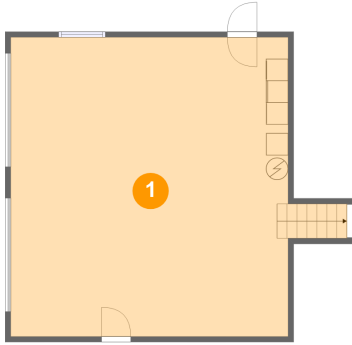
Floor 4

Total sqft: 820 Living area: 820

#		Dimensions	sqft	Counted as living area
11	Bath	8'0" x 5'1"	40 sq. ft	Yes
12	Bedroom	13'3" x 17'9"	178 sq. ft	Yes
13	Bedroom	10'2" x 14'1"	137 sq. ft	Yes
14	Bath	10'7" x 5'11"	49 sq. ft	Yes
15	Primary Bedroom	13'3" x 14'6"	192 sq. ft	Yes
16	Hall	5'9" x 6'6"	53 sq. ft	Yes

4821 Easthill Drive, Orander Park, Cave Spring, Roanoke,
Roanoke County, Virginia, United States, 24018

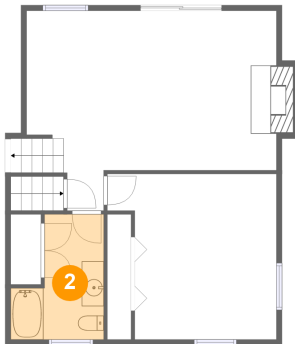
1 Floor 1 - Garage



Dimensions: 30'5" x 27'1"
Area: 695 sq. ft
Counted as living area: No

Heated: No
Finished: No
Enclosed: Yes
Contiguous: Yes
Permitted: Yes
Wet space: No
Addition: No
Conversion: No

2 Floor 2 - Bath



Dimensions: 8'6" x 11'5"
Area: 76 sq. ft
Counted as living area: Yes

Heated: Yes
Finished: Yes
Enclosed: Yes
Contiguous: Yes
Permitted: Yes
Wet space: Yes
Addition: No
Conversion: No

4821 Easthill Drive, Orander Park, Cave Spring, Roanoke,
Roanoke County, Virginia, United States, 24018

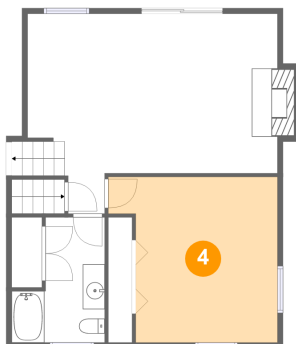
3 Floor 2 - Family Room



Dimensions: 22'9" x 18'2"
Area: 356 sq. ft
Counted as living area: Yes

Heated: Yes
Finished: Yes
Enclosed: Yes
Contiguous: Yes
Permitted: Yes
Wet space: No
Addition: No
Conversion: No

4 Floor 2 - Bedroom



Dimensions: 15'5" x 15'1"
Area: 202 sq. ft
Counted as living area: Yes

Heated: Yes
Finished: Yes
Enclosed: Yes
Contiguous: Yes
Permitted: Yes
Wet space: No
Addition: No
Conversion: No

5 Floor 3 - Foyer

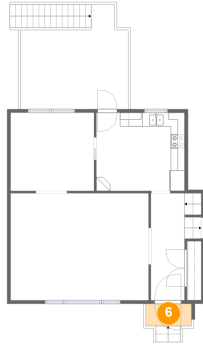


Dimensions: 4'10" x 15'5"
Area: 90 sq. ft
Counted as living area: Yes

Heated: Yes
Finished: Yes
Enclosed: Yes
Contiguous: Yes
Permitted: Yes
Wet space: No
Addition: No
Conversion: No

4821 Easthill Drive, Orander Park, Cave Spring, Roanoke,
Roanoke County, Virginia, United States, 24018

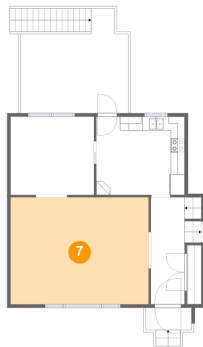
6 Floor 3 - Porch



Dimensions: 6'7" x 3'2"
Area: 21 sq. ft
Counted as living area: No

Heated: No
Finished: Yes
Enclosed: No
Contiguous: Yes
Permitted: Yes
Wet space: No
Addition: No
Conversion: No

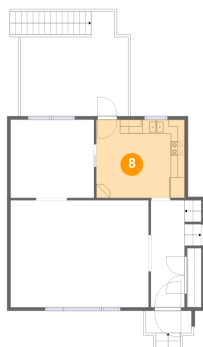
7 Floor 3 - Living Room



Dimensions: 19'11" x 15'5"
Area: 307 sq. ft
Counted as living area: Yes

Heated: Yes
Finished: Yes
Enclosed: Yes
Contiguous: Yes
Permitted: Yes
Wet space: No
Addition: No
Conversion: No

8 Floor 3 - Eat-in Kitchen

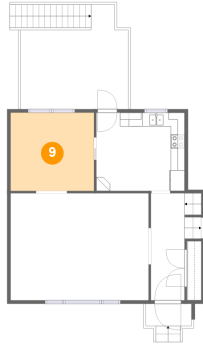


Dimensions: 12'8" x 11'3"
Area: 144 sq. ft
Counted as living area: Yes

Heated: Yes
Finished: Yes
Enclosed: Yes
Contiguous: Yes
Permitted: Yes
Wet space: No
Addition: No
Conversion: No

4821 Easthill Drive, Orander Park, Cave Spring, Roanoke,
Roanoke County, Virginia, United States, 24018

9 Floor 3 - Dining Room



Dimensions: 12'0" x 11'3"
Area: 136 sq. ft
Counted as living area: Yes

Heated: Yes
Finished: Yes
Enclosed: Yes
Contiguous: Yes
Permitted: Yes
Wet space: No
Addition: No
Conversion: No

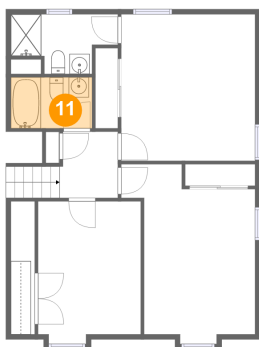
10 Floor 3 - Deck



Dimensions: 15'6" x 15'1"
Area: 190 sq. ft
Counted as living area: No

Heated: No
Finished: Yes
Enclosed: No
Contiguous: Yes
Permitted: Yes
Wet space: No
Addition: No
Conversion: No

11 Floor 4 - Bath

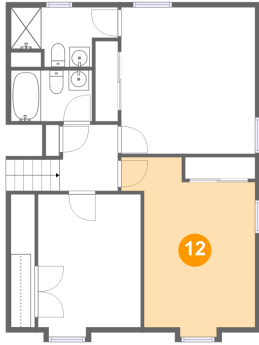


Dimensions: 8'0" x 5'1"
Area: 40 sq. ft
Counted as living area: Yes

Heated: Yes
Finished: Yes
Enclosed: Yes
Contiguous: Yes
Permitted: Yes
Wet space: Yes
Addition: No
Conversion: No

4821 Easthill Drive, Orander Park, Cave Spring, Roanoke,
Roanoke County, Virginia, United States, 24018

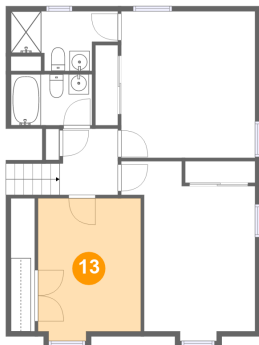
12 Floor 4 - Bedroom



Dimensions: 13'3" x 17'9"
Area: 178 sq. ft
Counted as living area: Yes

Heated: Yes
Finished: Yes
Enclosed: Yes
Contiguous: Yes
Permitted: Yes
Wet space: No
Addition: No
Conversion: No

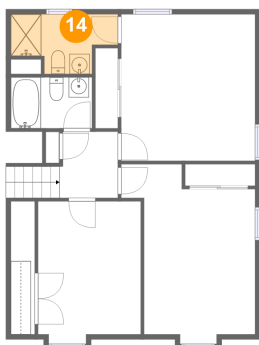
13 Floor 4 - Bedroom



Dimensions: 10'2" x 14'1"
Area: 137 sq. ft
Counted as living area: Yes

Heated: Yes
Finished: Yes
Enclosed: Yes
Contiguous: Yes
Permitted: Yes
Wet space: No
Addition: No
Conversion: No

14 Floor 4 - Bath

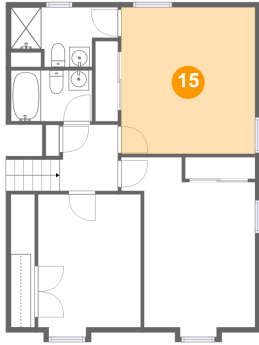


Dimensions: 10'7" x 5'11"
Area: 49 sq. ft
Counted as living area: Yes

Heated: Yes
Finished: Yes
Enclosed: Yes
Contiguous: Yes
Permitted: Yes
Wet space: Yes
Addition: No
Conversion: No

4821 Easthill Drive, Orander Park, Cave Spring, Roanoke,
Roanoke County, Virginia, United States, 24018

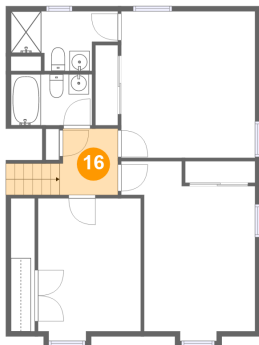
15 Floor 4 - Primary Bedroom



Dimensions: 13'3" x 14'6"
Area: 192 sq. ft
Counted as living area: Yes

Heated: Yes
Finished: Yes
Enclosed: Yes
Contiguous: Yes
Permitted: Yes
Wet space: No
Addition: No
Conversion: No

16 Floor 4 - Hall



Dimensions: 5'9" x 6'6"
Area: 53 sq. ft
Counted as living area: Yes

Heated: Yes
Finished: Yes
Enclosed: Yes
Contiguous: Yes
Permitted: Yes
Wet space: No
Addition: No
Conversion: No