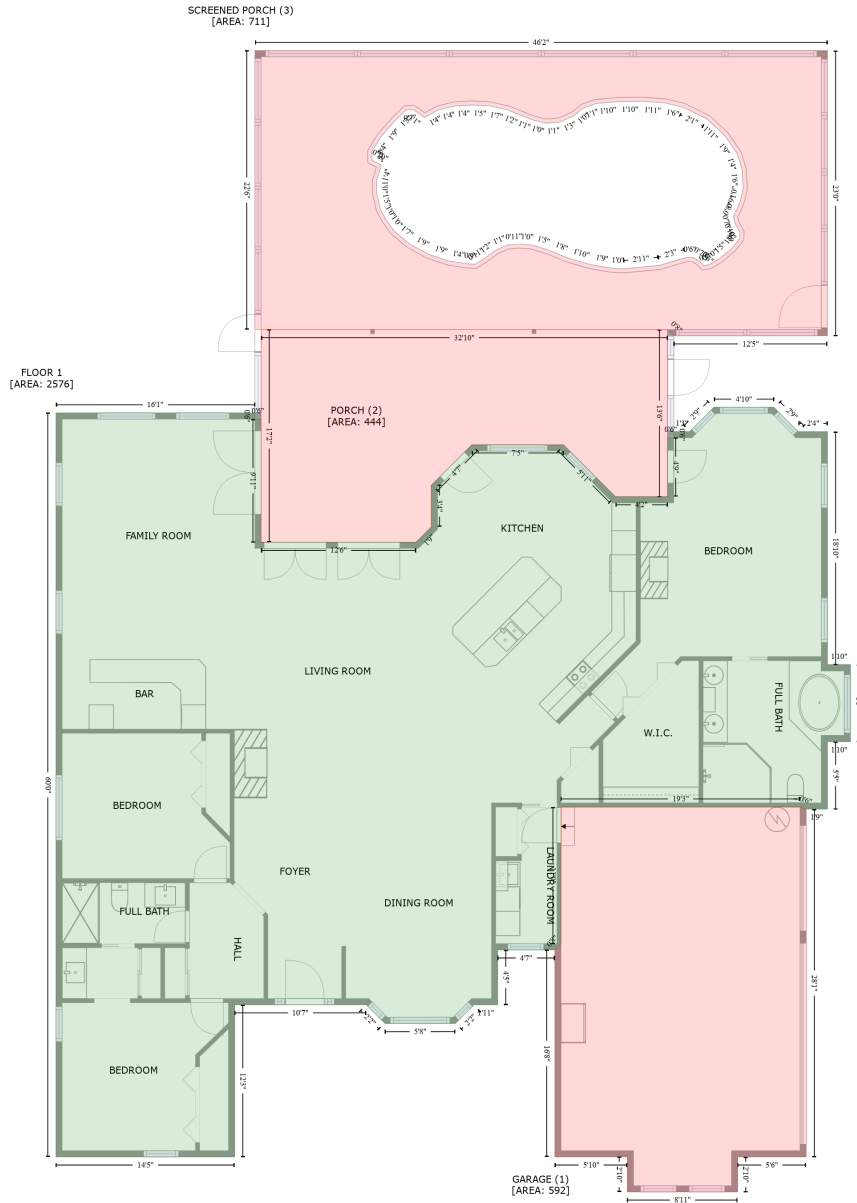


3187 Garrison Road, Spanish Acres, Dunedin, Pinellas County, Florida, United States, 34698

Gross Living Area: 2576 sq. ft



Space	Area (sq. ft)	Calculation
FLOOR 1 (Living area)	2576	Coordinate Polygon Area Algorithm using inches $-((692.3 + 716) * (389.7 - 413.3) + (716 + 744.1) * (413.3 - 413.3) + (744.1 + 744.1) * (413.3 - 638.9) + (744.1 + 766.4) * (638.9 - 638.9) + (766.4 + 766.4) * (638.9 - 713.5) + (766.4 + 744.1) * (713.5 - 713.5) + (744.1 + 744.1) * (713.5 - 778.8) + (744.1 + 723.5) * (778.8 - 778.8) + (723.5 + 717.5) * (778.8 - 776.8) + (717.5 + 486.2) * (776.8 - 776.8) + (486.2 + 486.2) * (776.8 - 909) + (486.2 + 480.2) * (909 - 915) + (480.2 + 424.8) * (915 - 915) + (424.8 + 424.8) * (915 - 968.2) + (424.8 + 402) * (968.2 - 968.2) + (402 + 383.9) * (968.2 - 986.3) + (383.9 + 315.7) * (986.3 - 986.4) + (315.7 + 297.6) * (986.4 - 968.2) + (297.6 + 170.2) * (968.2 - 968.2) + (170.2 + 170.2) *$

3187 Garrison Road, Spanish Acres, Dunedin, Pinellas County, Florida, United States, 34698

Gross Living Area: 2576 sq. ft

Space	Area (sq. ft)	Calculation <small>Coordinate Polygon Area Algorithm using inches</small>
		$(968.2 - 1115.5) + (170.2 + -2.9) * (1115.5 - 1115.5) + (-2.9 + -2.9) * (1115.5 - 395.2) + (-2.9 + 189.8) * (395.2 - 395.2) + (189.8 + 189.8) * (395.2 - 401.2) + (189.8 + 195.8) * (401.2 - 401.2) + (195.8 + 195.8) * (401.2 - 520.4) + (195.8 + 345.6) * (520.4 - 520.4) + (345.6 + 360.6) * (520.4 - 505.4) + (360.6 + 360.6) * (505.4 - 465.1) + (360.6 + 380.3) * (465.1 - 445.7) + (380.3 + 399.6) * (445.7 - 426.1) + (399.6 + 488.7) * (426.1 - 426.1) + (488.7 + 513.8) * (426.1 - 451.2) + (513.8 + 538.9) * (451.2 - 476.3) + (538.9 + 589.4) * (476.3 - 476.3) + (589.4 + 589.4) * (476.3 - 419.3) + (589.4 + 595.4) * (419.3 - 419.3) + (595.4 + 595.4) * (419.3 - 413.3) + (595.4 + 610.5) * (413.3 - 413.3) + (610.5 + 634.2) * (413.3 - 389.7) + (634.2 + 692.3) * (389.7 - 389.7) * 0.5 * 0.00694$
GARAGE (Non-living area)	592	$-((717.5 + 723.5) * (776.8 - 778.8) + (723.5 + 723.5) * (778.8 - 1115.5) + (723.5 + 657.2) * (1115.5 - 1115.5) + (657.2 + 657.2) * (1115.5 - 1149.4) + (657.2 + 550.4) * (1149.4 - 1149.4) + (550.4 + 550.4) * (1149.4 - 1115.5) + (550.4 + 480.2) * (1115.5 - 1115.5) + (480.2 + 480.2) * (1115.5 - 915) + (480.2 + 486.2) * (915 - 909) + (486.2 + 486.2) * (909 - 776.8) + (486.2 + 717.5) * (776.8 - 776.8)) * 0.5 * 0.00694$
PORCH (Non-living area)	444	$-((589.4 + 589.4) * (314.5 - 476.3) + (589.4 + 538.9) * (476.3 - 476.3) + (538.9 + 488.7) * (476.3 - 426.1) + (488.7 + 399.6) * (426.1 - 426.1) + (399.6 + 360.6) * (426.1 - 465.1) + (360.6 + 360.6) * (465.1 - 505.4) + (360.6 + 345.6) * (505.4 - 520.4) + (345.6 + 195.8) * (520.4 - 520.4) + (195.8 + 195.8) * (520.4 - 314.5) + (195.8 + 589.4) * (314.5 - 314.5)) * 0.5 * 0.00694$
SCREENED PORCH (Non-living area)	711	$-((744.1 + 744.1) * (44.4 - 320.5) + (744.1 + 595.4) * (320.5 - 320.5) + (595.4 + 589.4) * (320.5 - 314.5) + (589.4 + 189.8) * (314.5 - 314.5) + (189.8 + 189.8) * (314.5 - 44.4) + (189.8 + 744.1) * (44.4 - 44.4)) * 0.5 * 0.00694 - ((563.8 + 542) * (93.4 - 93.7) + (542 + 519.8) * (93.7 - 95.8) + (519.8 + 507.7) * (95.8 - 100.1) + (507.7 + 498.6) * (100.1 - 107.6) + (498.6 + 484.8) * (107.6 - 113.6) + (484.8 + 471.8) * (113.6 - 114.7) + (471.8 + 459.7) * (114.7 - 111.8) + (459.7 + 447.2) * (111.8 - 106.9) + (447.2 + 434.3) * (106.9 - 101.8) + (434.3 + 416.2) * (101.8 - 97.9) + (416.2 + 399.5) * (97.9 - 97.1) + (399.5 + 383.5) * (97.1 - 98) + (383.5 + 367.9) * (98 - 101.7) + (367.9 + 353.9) * (101.7 - 109.2) + (353.9 + 343.1) * (109.2 - 101.5) + (343.1 + 336.2) * (101.5 - 101.8) + (336.2 + 325.3) * (101.8 - 112.4) + (325.3 + 311.4) * (112.4 - 128.5) + (311.4 + 302.9) * (128.5 - 142.4) + (302.9 + 303.1) * (142.4 - 150.7) + (303.1 + 312.1) * (150.7 - 155.2) + (312.1 + 307.7) * (155.2 - 170.5) + (307.7 + 307.8) * (170.5 - 182.6) + (307.8 + 311.5) * (182.6 - 199.1) + (311.5 + 317.4) * (199.1 - 209.3) + (317.4 + 324.7) * (209.3 - 219.2) + (324.7 + 339.6) * (219.2 - 231.6) + (339.6 + 357.7) * (231.6 - 241.6) + (357.7 + 377.7) * (241.6 - 248.2) + (377.7 + 393.7) * (248.2 - 250.8) + (393.7 + 402.7) * (250.8 - 251.3) + (402.7 + 412.6) * (251.3 - 245.5) + (412.6 + 423.6) * (245.5 - 237.5) + (423.6 + 435.1) * (237.5 - 232.6) + (435.1 + 446.6) * (232.6 - 232.1) + (446.6 + 458.9) * (232.1 - 232.8) + (458.9 + 474.7) * (232.8 - 237.9) + (474.7 + 493) * (237.9 - 245.3) + (493 + 514.2) * (245.3 - 251.5) + (514.2 + 534.8) * (251.5 - 255) + (534.8 + 547.1) * (255 - 255.6) + (547.1 + 581.5) * (255.6 - 252.4) + (581.5 + 607.6) * (252.4 - 244.6) + (607.6 + 613.9) * (244.6 - 244.6) + (613.9 + 620.1) * (244.6 - 248.1) + (620.1 + 624.4) * (248.1 - 252.6) + (624.4 + 629.8) * (252.6 - 251.6) + (629.8 + 638.4) * (251.6 - 246.7) + (638.4 + 651.9) * (246.7 - 235.6) + (651.9 + 659.2) * (235.6 - 226.2) + (659.2 + 659.4) * (226.2 - 220.3) + (659.4 + 654.5) * (220.3 - 211.1) + (654.5 + 653) * (211.1 - 204.6) + (653 + 656.5) * (204.6 - 197.9) + (656.5 + 660) * (197.9 - 189.5) + (660 + 662.6) * (189.5 - 177.6) + (662.6 + 661.4) * (177.6 - 159.5) + (661.4 + 656.8) * (159.5 - 144.3) + (656.8 + 644.8) * (144.3 - 126.6) + (644.8 + 627.6) * (126.6 - 110.7) + (627.6 + 604.9) * (110.7 - 99.5) + (604.9 + 587.1) * (99.5 - 95.2) + (587.1 + 563.8) * (95.2 - 93.4)) * 0.5 * 0.00694$