

Home data report

18513 N 94th St,Scottsdale,AZ,US




Total Area: 2068 sq. ft
1st Floor: 1038 sq. ft, 2nd Floor: 1030 sq. ft
Excluded: Garage 425 sq. ft, Open to below 79 sq. ft, Walls: 203 sq. ft

Property summary

 **2** Floors

 **3** Bedrooms

 **3** Bathrooms

 **1** Garages

Home data report

18513 N 94th St,Scottsdale,AZ,US



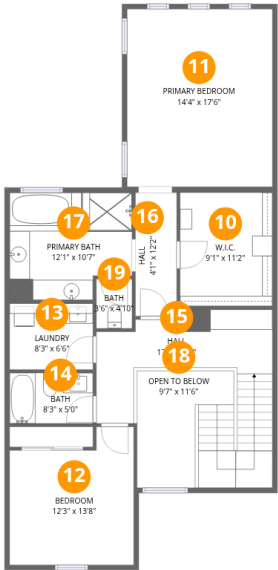
Room dimensions

Floor 1 Total:1038sqft Excluded: 425sqft

#		Dimensions	sqft	Counted as living area
1	Hall	3'9" x 2'11"	11 sq. ft	Yes
2	Foyer	13'4" x 11'4"	147 sq. ft	Yes
3	Kitchen	9'3" x 17'5"	148 sq. ft	Yes
4	Bath	8'2" x 5'8"	46 sq. ft	Yes
5	Bedroom	12'3" x 13'0"	139 sq. ft	Yes
6	Garage	20'8" x 21'1"	425 sq. ft	No
7	Hall	5'9" x 3'7"	25 sq. ft	Yes
8	Living Room	16'8" x 17'5"	291 sq. ft	Yes
9	Dining Area	12'10" x 12'8"	162 sq. ft	Yes

Home data report

18513 N 94th St,Scottsdale,AZ,US



Room dimensions

Floor 2 Total:1030sqft Excluded: 79sqft

#		Dimensions	sqft	Counted as living area
10	W.I.C.	9'1" x 11'2"	102 sq. ft	Yes
11	Primary Bedroom	14'4" x 17'6"	252 sq. ft	Yes
12	Bedroom	12'3" x 13'8"	147 sq. ft	Yes
13	Laundry	8'3" x 6'6"	54 sq. ft	Yes
14	Bath	8'3" x 5'0"	41 sq. ft	Yes
15	Hall	17'5" x 9'0"	182 sq. ft	Yes
16	Hall	4'1" x 12'2"	50 sq. ft	Yes
17	Primary Bath	12'1" x 10'7"	114 sq. ft	Yes
18	Open To Below	9'7" x 11'6"	79 sq. ft	No
19	Bath	3'6" x 4'10"	17 sq. ft	Yes

1 Floor 1 - Hall



Dimensions: 3'9" x 2'11"
Area: 11 sq. ft
Counted as living area: Yes

Heated: Yes
Finished: Yes
Enclosed: Yes
Contiguous: Yes
Permitted: Yes
Wet space: No
Addition: No
Conversion: No

2 Floor 1 - Foyer



Dimensions: 13'4" x 11'4"
Area: 147 sq. ft
Counted as living area: Yes

Heated: Yes
Finished: Yes
Enclosed: Yes
Contiguous: Yes
Permitted: Yes
Wet space: No
Addition: No
Conversion: No

3 Floor 1 - Kitchen



Dimensions: 9'3" x 17'5"
Area: 148 sq. ft
Counted as living area: Yes

Heated: Yes
Finished: Yes
Enclosed: Yes
Contiguous: Yes
Permitted: Yes
Wet space: No
Addition: No
Conversion: No

4 Floor 1 - Bath



Dimensions: 8'2" x 5'8"
Area: 46 sq. ft
Counted as living area: Yes

Heated: Yes
Finished: Yes
Enclosed: Yes
Contiguous: Yes
Permitted: Yes
Wet space: Yes
Addition: No
Conversion: No

5 Floor 1 - Bedroom



Dimensions: 12'3" x 13'0"
Area: 139 sq. ft
Counted as living area: Yes

Heated: Yes
Finished: Yes
Enclosed: Yes
Contiguous: Yes
Permitted: Yes
Wet space: No
Addition: No
Conversion: No

6 Floor 1 - Garage



Dimensions: 20'8" x 21'1"
Area: 425 sq. ft
Counted as living area: No

Heated: No
Finished: No
Enclosed: Yes
Contiguous: Yes
Permitted: Yes
Wet space: No
Addition: No
Conversion: No

7 Floor 1 - Hall



Dimensions: 5'9" x 3'7"
Area: 25 sq. ft
Counted as living area: Yes

Heated: Yes
Finished: Yes
Enclosed: Yes
Contiguous: Yes
Permitted: Yes
Wet space: No
Addition: No
Conversion: No

8 Floor 1 - Living Room



Dimensions: 16'8" x 17'5"
Area: 291 sq. ft
Counted as living area: Yes

Heated: Yes
Finished: Yes
Enclosed: Yes
Contiguous: Yes
Permitted: Yes
Wet space: No
Addition: No
Conversion: No

9 Floor 1 - Dining Area



Dimensions: 12'10" x 12'8"
Area: 162 sq. ft
Counted as living area: Yes

Heated: Yes
Finished: Yes
Enclosed: Yes
Contiguous: Yes
Permitted: Yes
Wet space: No
Addition: No
Conversion: No

10 Floor 2 - W.I.C.



Dimensions: 9'1" x 11'2"
Area: 102 sq. ft
Counted as living area: Yes

Heated: Yes
Finished: Yes
Enclosed: Yes
Contiguous: Yes
Permitted: Yes
Wet space: No
Addition: No
Conversion: No

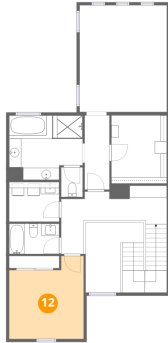
11 Floor 2 - Primary Bedroom



Dimensions: 14'4" x 17'6"
Area: 252 sq. ft
Counted as living area: Yes

Heated: Yes
Finished: Yes
Enclosed: Yes
Contiguous: Yes
Permitted: Yes
Wet space: No
Addition: No
Conversion: No

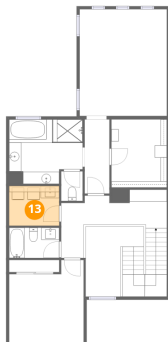
12 Floor 2 - Bedroom



Dimensions: 12'3" x 13'8"
Area: 147 sq. ft
Counted as living area: Yes

Heated: Yes
Finished: Yes
Enclosed: Yes
Contiguous: Yes
Permitted: Yes
Wet space: No
Addition: No
Conversion: No

13 Floor 2 - Laundry



Dimensions: 8'3" x 6'6"
Area: 54 sq. ft
Counted as living area: Yes

Heated: Yes
Finished: Yes
Enclosed: Yes
Contiguous: Yes
Permitted: Yes
Wet space: No
Addition: No
Conversion: No

14 Floor 2 - Bath



Dimensions: 8'3" x 5'0"
Area: 41 sq. ft
Counted as living area: Yes

Heated: Yes
Finished: Yes
Enclosed: Yes
Contiguous: Yes
Permitted: Yes
Wet space: Yes
Addition: No
Conversion: No

15 Floor 2 - Hall



Dimensions: 17'5" x 9'0"
Area: 182 sq. ft
Counted as living area: Yes

Heated: Yes
Finished: Yes
Enclosed: Yes
Contiguous: Yes
Permitted: Yes
Wet space: No
Addition: No
Conversion: No

16 Floor 2 - Hall



Dimensions: 4'1" x 12'2"
Area: 50 sq. ft
Counted as living area: Yes

Heated: Yes
Finished: Yes
Enclosed: Yes
Contiguous: Yes
Permitted: Yes
Wet space: No
Addition: No
Conversion: No

17 Floor 2 - Primary Bath



Dimensions: 12'1" x 10'7"
Area: 114 sq. ft
Counted as living area: Yes

Heated: Yes
Finished: Yes
Enclosed: Yes
Contiguous: Yes
Permitted: Yes
Wet space: Yes
Addition: No
Conversion: No

18 Floor 2 - Open To Below



Dimensions: 9'7" x 11'6"
Area: 79 sq. ft
Counted as living area: No

Heated: No
Finished: No
Enclosed: No
Contiguous: Yes
Permitted: No
Wet space: No
Addition: No
Conversion: No

19 Floor 2 - Bath



Dimensions: 3'6" x 4'10"
Area: 17 sq. ft
Counted as living area: Yes

Heated: Yes
Finished: Yes
Enclosed: Yes
Contiguous: Yes
Permitted: Yes
Wet space: Yes
Addition: No
Conversion: No