



**TOTAL: 3395 sq. ft**

Below Ground: 1469 sq. ft, FLOOR 2: 1926 sq. ft

EXCLUDED AREAS: STORAGE: 126 sq. ft, ELECTRICAL ROOM: 22 sq. ft, BASEMENT: 287 sq. ft,  
GARAGE: 560 sq. ft



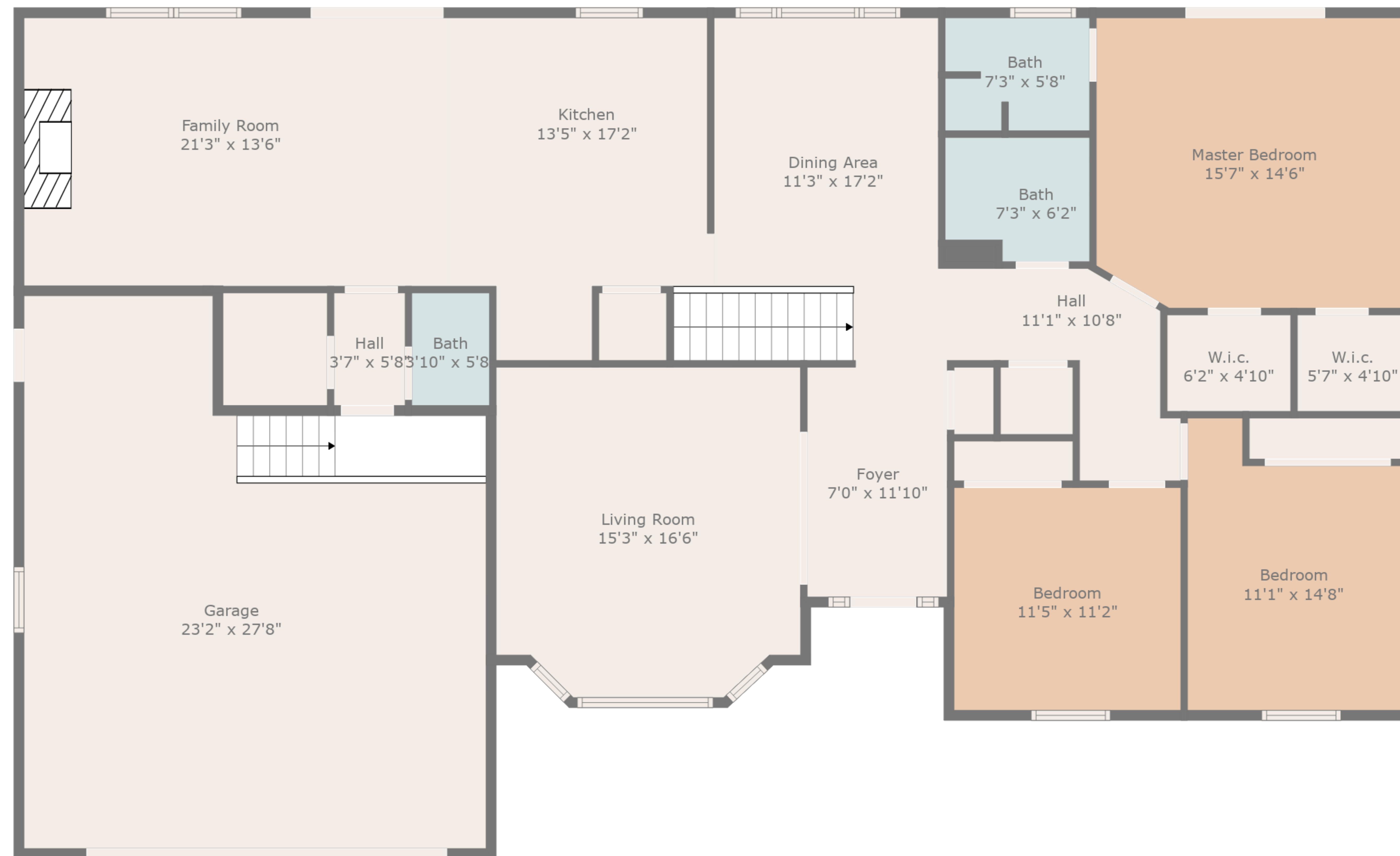


**TOTAL: 3395 sq. ft**

Below Ground: 1469 sq. ft, FLOOR 2: 1926 sq. ft

EXCLUDED AREAS: STORAGE: 126 sq. ft, ELECTRICAL ROOM: 22 sq. ft, BASEMENT: 287 sq. ft,  
GARAGE: 560 sq. ft





Floor 2



Floor 1

**TOTAL: 3395 sq. ft**

Below Ground: 1469 sq. ft, FLOOR 2: 1926 sq. ft

EXCLUDED AREAS: STORAGE: 126 sq. ft, ELECTRICAL ROOM: 22 sq. ft, BASEMENT: 287 sq. ft,  
GARAGE: 560 sq. ft

