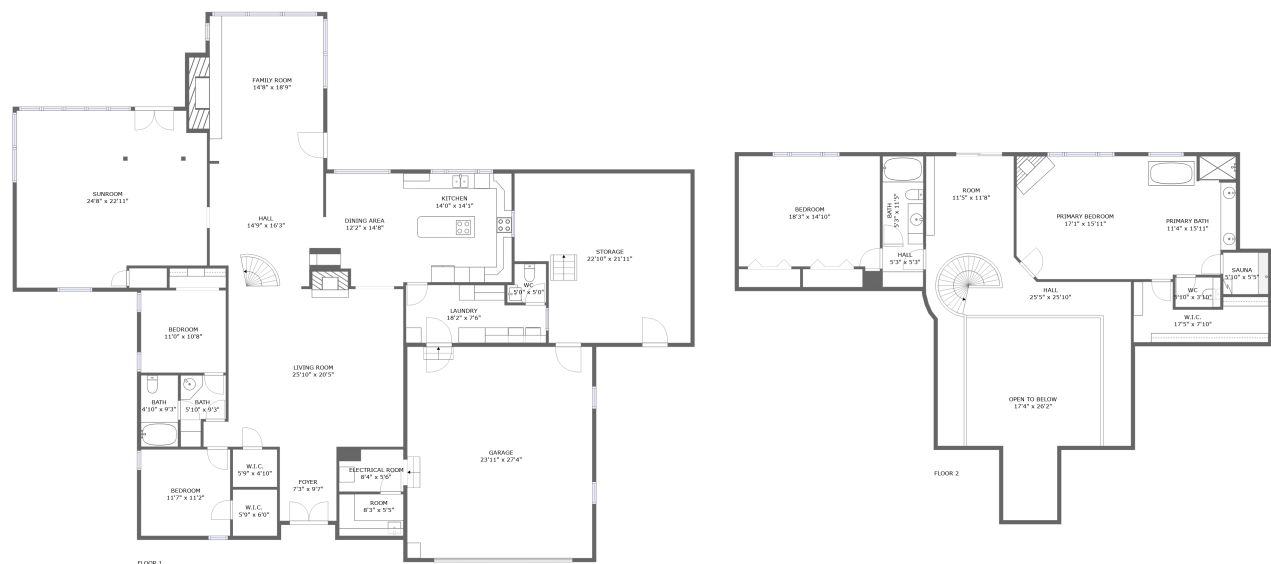


Home report

200 Southeast Quail Ridge Loop, Bartlesville, Washington
County, Oklahoma, United States, 74006



Total Area: 4110 sq. ft
Floor 1: 2641 sq. ft, Floor 2: 1469 sq. ft
Excluded: Garage 655 sq. ft, Electrical room 45 sq. ft, Storage 454 sq. ft, Fireplace 19 sq. ft, Open to below 355 sq. ft, Walls: 294 sq. ft

Property summary

 **2** Floors

 **4** Bedrooms

 **3** Bathrooms

Home report

**200 Southeast Quail Ridge Loop, Bartlesville, Washington
County, Oklahoma, United States, 74006**



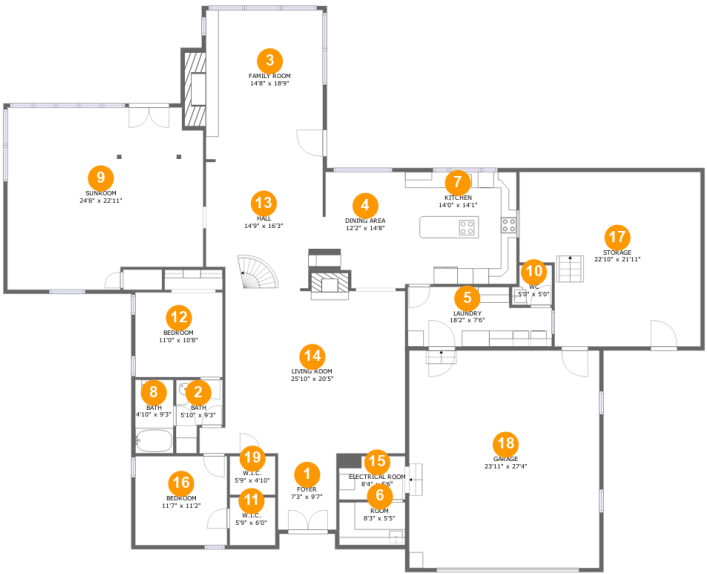
1
Half baths



1
Garages

Home report

200 Southeast Quail Ridge Loop, Bartlesville, Washington
County, Oklahoma, United States, 74006



Room dimensions

Floor 1 Total:2641sqft Excluded: 1173sqft

#		Max Dimensions	sqft	Included
1	Foyer	7'3" x 9'7"	71 sq. ft	Yes
2	Bath	5'10" x 9'3"	43 sq. ft	Yes
3	Family Room	14'8" x 18'9"	302 sq. ft	Yes
4	Dining Area	12'2" x 14'8"	146 sq. ft	Yes
5	Laundry	18'2" x 7'6"	122 sq. ft	Yes
6	Room	8'3" x 5'5"	45 sq. ft	Yes
7	Kitchen	14'0" x 14'1"	198 sq. ft	Yes
8	Bath	4'10" x 9'3"	44 sq. ft	Yes
9	Sunroom	24'8" x 22'11"	527 sq. ft	Yes
10	WC	5'0" x 5'0"	23 sq. ft	Yes
11	W.I.C.	5'9" x 6'0"	34 sq. ft	Yes

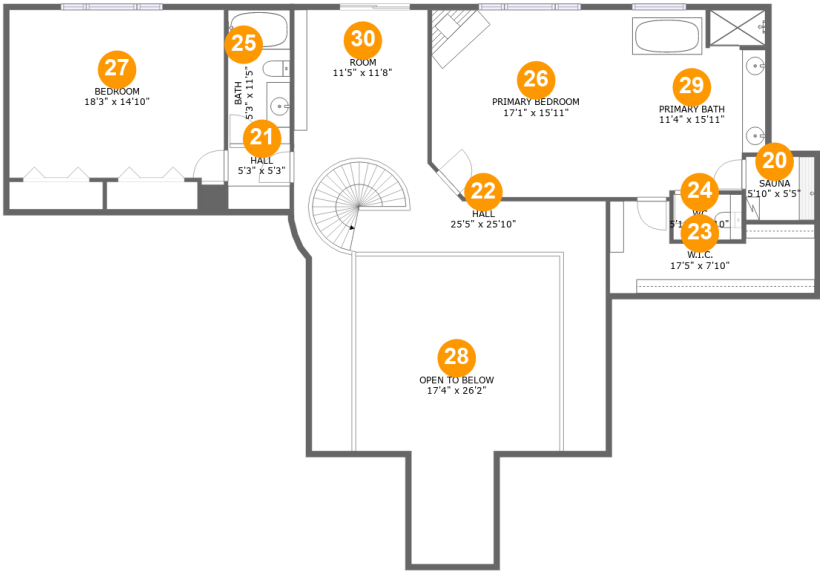
Home report

**200 Southeast Quail Ridge Loop, Bartlesville, Washington
County, Oklahoma, United States, 74006**

#		Max Dimensions	sqft	Included
12	Bedroom	11'0" x 10'8"	117 sq. ft	Yes
13	Hall	14'9" x 16'3"	223 sq. ft	Yes
14	Living Room	25'10" x 20'5"	487 sq. ft	Yes
15	Electrical Room	8'4" x 5'6"	45 sq. ft	No
16	Bedroom	11'7" x 11'2"	129 sq. ft	Yes
17	Storage	22'10" x 21'11"	454 sq. ft	No
18	Garage	23'11" x 27'4"	655 sq. ft	No
19	W.I.C.	5'9" x 4'10"	28 sq. ft	Yes

Home report

200 Southeast Quail Ridge Loop, Bartlesville, Washington
County, Oklahoma, United States, 74006



Room dimensions

Floor 2 Total:1469sqft Excluded: 355sqft

#		Max Dimensions	sqft	Included
20	Sauna	5'10" x 5'5"	32 sq. ft	Yes
21	Hall	5'3" x 5'3"	28 sq. ft	Yes
22	Hall	25'5" x 25'10"	307 sq. ft	Yes
23	W.I.C.	17'5" x 7'10"	102 sq. ft	Yes
24	WC	5'10" x 3'10"	22 sq. ft	Yes
25	Bath	5'3" x 11'5"	60 sq. ft	Yes
26	Primary Bedroom	17'1" x 15'11"	268 sq. ft	Yes
27	Bedroom	18'3" x 14'10"	266 sq. ft	Yes
28	Open To Below	17'4" x 26'2"	355 sq. ft	No
29	Primary Bath	11'4" x 15'11"	167 sq. ft	Yes
30	Room	11'5" x 11'8"	133 sq. ft	Yes

1 Floor 1 - Foyer



Max Dimensions: 7'3" x 9'7"
Calculated Area: 71 sq. ft
Included: Yes

Heated: Yes
Finished: Yes
Enclosed: Yes
Contiguous: Yes
Permitted: Yes
Wet space: No
Addition: No
Conversion: No

2 Floor 1 - Bath



Max Dimensions: 5'10" x 9'3"
Calculated Area: 43 sq. ft
Included: Yes

Heated: Yes
Finished: Yes
Enclosed: Yes
Contiguous: Yes
Permitted: Yes
Wet space: Yes
Addition: No
Conversion: No

200 Southeast Quail Ridge Loop, Bartlesville, Washington
County, Oklahoma, United States, 74006

3 Floor 1 - Family Room



Max Dimensions: 14'8" x 18'9"
Calculated Area: 302 sq. ft
Included: Yes

Heated: Yes
Finished: Yes
Enclosed: Yes
Contiguous: Yes
Permitted: Yes
Wet space: No
Addition: No
Conversion: No

4 Floor 1 - Dining Area



Max Dimensions: 12'2" x 14'8"
Calculated Area: 146 sq. ft
Included: Yes

Heated: Yes
Finished: Yes
Enclosed: Yes
Contiguous: Yes
Permitted: Yes
Wet space: No
Addition: No
Conversion: No

5 Floor 1 - Laundry



Max Dimensions: 18'2" x 7'6"
Calculated Area: 122 sq. ft
Included: Yes

Heated: Yes
Finished: Yes
Enclosed: Yes
Contiguous: Yes
Permitted: Yes
Wet space: No
Addition: No
Conversion: No

200 Southeast Quail Ridge Loop, Bartlesville, Washington
County, Oklahoma, United States, 74006

6 Floor 1 - Room



Max Dimensions: 8'3" x 5'5"
Calculated Area: 45 sq. ft
Included: No

Heated: Yes
Finished: Yes
Enclosed: Yes
Contiguous: No
Permitted: Yes
Wet space: No
Addition: No
Conversion: No

7 Floor 1 - Kitchen



Max Dimensions: 14'0" x 14'1"
Calculated Area: 198 sq. ft
Included: Yes

Heated: Yes
Finished: Yes
Enclosed: Yes
Contiguous: Yes
Permitted: Yes
Wet space: No
Addition: No
Conversion: No

8 Floor 1 - Bath

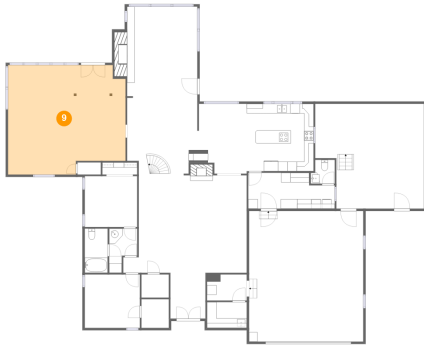


Max Dimensions: 4'10" x 9'3"
Calculated Area: 44 sq. ft
Included: Yes

Heated: Yes
Finished: Yes
Enclosed: Yes
Contiguous: Yes
Permitted: Yes
Wet space: Yes
Addition: No
Conversion: No

200 Southeast Quail Ridge Loop, Bartlesville, Washington
County, Oklahoma, United States, 74006

9 Floor 1 - Sunroom



Max Dimensions: 24'8" x 22'11"
Calculated Area: 527 sq. ft
Included: Yes

Heated: Yes
Finished: Yes
Enclosed: Yes
Contiguous: Yes
Permitted: Yes
Wet space: No
Addition: No
Conversion: No

10 Floor 1 - WC



Max Dimensions: 5'0" x 5'0"
Calculated Area: 23 sq. ft
Included: Yes

Heated: Yes
Finished: Yes
Enclosed: Yes
Contiguous: Yes
Permitted: Yes
Wet space: Yes
Addition: No
Conversion: No

11 Floor 1 - W.I.C.



Max Dimensions: 5'9" x 6'0"
Calculated Area: 34 sq. ft
Included: Yes

Heated: Yes
Finished: Yes
Enclosed: Yes
Contiguous: Yes
Permitted: Yes
Wet space: No
Addition: No
Conversion: No

200 Southeast Quail Ridge Loop, Bartlesville, Washington
County, Oklahoma, United States, 74006

12 Floor 1 - Bedroom



Max Dimensions: 11'0" x 10'8"
Calculated Area: 117 sq. ft
Included: Yes

Heated: Yes
Finished: Yes
Enclosed: Yes
Contiguous: Yes
Permitted: Yes
Wet space: No
Addition: No
Conversion: No

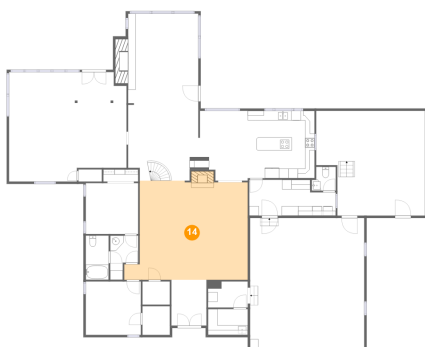
13 Floor 1 - Hall



Max Dimensions: 14'9" x 16'3"
Calculated Area: 223 sq. ft
Included: Yes

Heated: Yes
Finished: Yes
Enclosed: Yes
Contiguous: Yes
Permitted: Yes
Wet space: No
Addition: No
Conversion: No

14 Floor 1 - Living Room



Max Dimensions: 25'10" x 20'5"
Calculated Area: 487 sq. ft
Included: Yes

Heated: Yes
Finished: Yes
Enclosed: Yes
Contiguous: Yes
Permitted: Yes
Wet space: No
Addition: No
Conversion: No

200 Southeast Quail Ridge Loop, Bartlesville, Washington
County, Oklahoma, United States, 74006

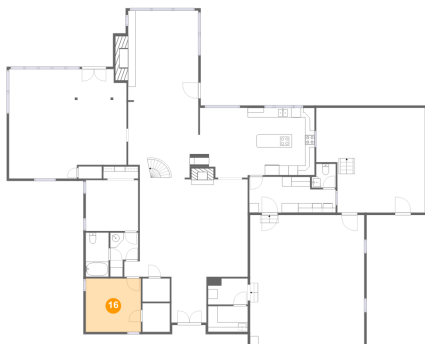
15 Floor 1 - Electrical Room



Max Dimensions: 8'4" x 5'6"
Calculated Area: 45 sq. ft
Included: No

Heated: No
Finished: No
Enclosed: Yes
Contiguous: Yes
Permitted: Yes
Wet space: No
Addition: No
Conversion: No

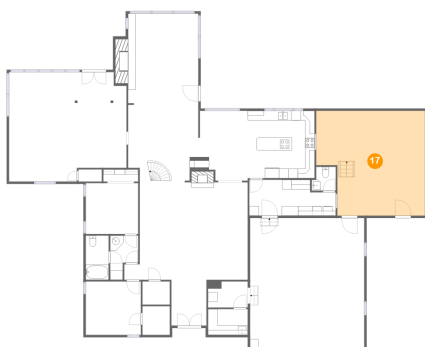
16 Floor 1 - Bedroom



Max Dimensions: 11'7" x 11'2"
Calculated Area: 129 sq. ft
Included: Yes

Heated: Yes
Finished: Yes
Enclosed: Yes
Contiguous: Yes
Permitted: Yes
Wet space: No
Addition: No
Conversion: No

17 Floor 1 - Storage



Max Dimensions: 22'10" x 21'11"
Calculated Area: 454 sq. ft
Included: No

Heated: No
Finished: No
Enclosed: No
Contiguous: Yes
Permitted: Yes
Wet space: No
Addition: No
Conversion: No

200 Southeast Quail Ridge Loop, Bartlesville, Washington
County, Oklahoma, United States, 74006

18 Floor 1 - Garage



Max Dimensions: 23'11" x 27'4"
Calculated Area: 655 sq. ft
Included: No

Heated: No
Finished: No
Enclosed: Yes
Contiguous: Yes
Permitted: Yes
Wet space: No
Addition: No
Conversion: No

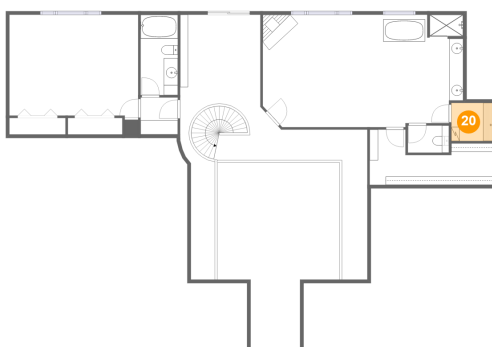
19 Floor 1 - W.I.C.



Max Dimensions: 5'9" x 4'10"
Calculated Area: 28 sq. ft
Included: Yes

Heated: Yes
Finished: Yes
Enclosed: Yes
Contiguous: Yes
Permitted: Yes
Wet space: No
Addition: No
Conversion: No

20 Floor 2 - Sauna

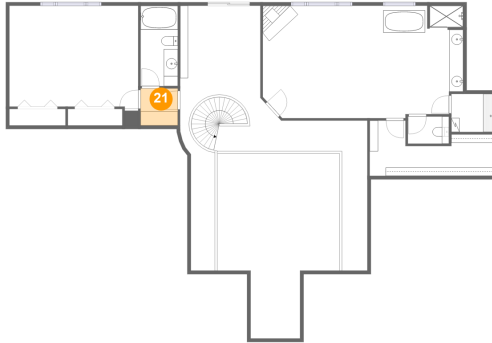


Max Dimensions: 5'10" x 5'5"
Calculated Area: 32 sq. ft
Included: Yes

Heated: Yes
Finished: Yes
Enclosed: Yes
Contiguous: Yes
Permitted: Yes
Wet space: No
Addition: No
Conversion: No

200 Southeast Quail Ridge Loop, Bartlesville, Washington
County, Oklahoma, United States, 74006

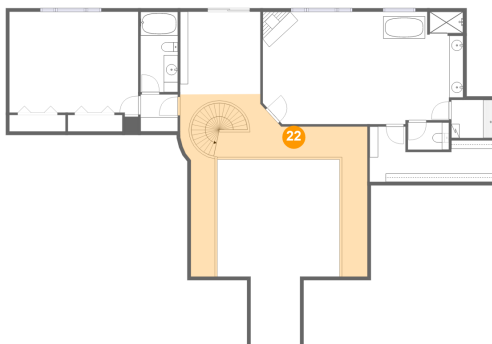
21 Floor 2 - Hall



Max Dimensions: 5'3" x 5'3"
Calculated Area: 28 sq. ft
Included: Yes

Heated: Yes
Finished: Yes
Enclosed: Yes
Contiguous: Yes
Permitted: Yes
Wet space: No
Addition: No
Conversion: No

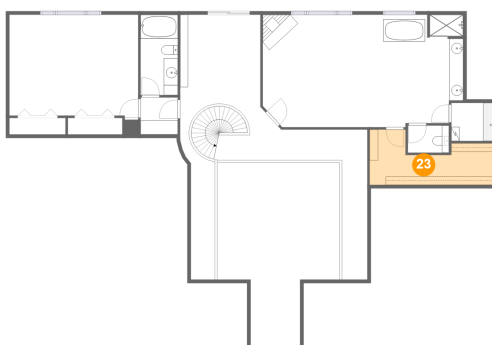
22 Floor 2 - Hall



Max Dimensions: 25'5" x
25'10"
Calculated Area: 307 sq. ft
Included: Yes

Heated: Yes
Finished: Yes
Enclosed: Yes
Contiguous:
Yes
Permitted: Yes
Wet space: No
Addition: No
Conversion: No

23 Floor 2 - W.I.C.

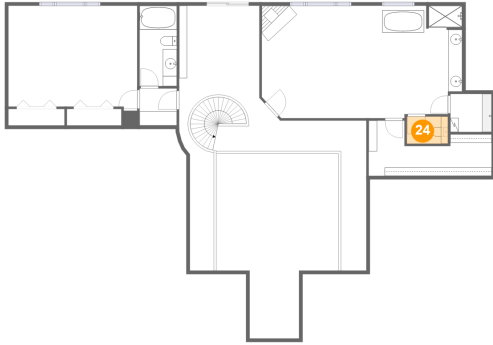


Max Dimensions: 17'5" x
7'10"
Calculated Area: 102 sq. ft
Included: Yes

Heated: Yes
Finished: Yes
Enclosed: Yes
Contiguous:
Yes
Permitted: Yes
Wet space: No
Addition: No
Conversion: No

200 Southeast Quail Ridge Loop, Bartlesville, Washington
County, Oklahoma, United States, 74006

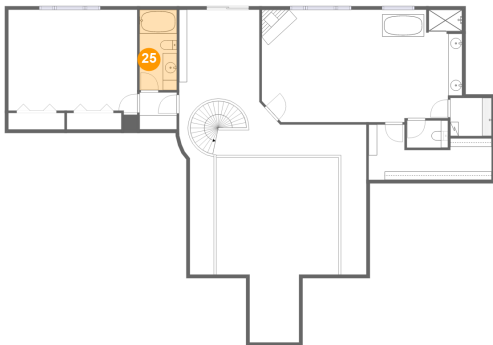
24 Floor 2 - WC



Max Dimensions: 5'10" x 3'10"
Calculated Area: 22 sq. ft
Included: Yes

Heated: Yes
Finished: Yes
Enclosed: Yes
Contiguous: Yes
Permitted: Yes
Wet space: Yes
Addition: No
Conversion: No

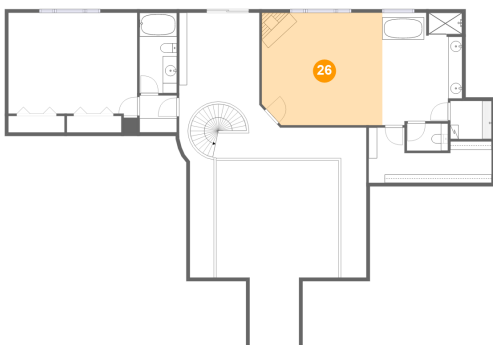
25 Floor 2 - Bath



Max Dimensions: 5'3" x 11'5"
Calculated Area: 60 sq. ft
Included: Yes

Heated: Yes
Finished: Yes
Enclosed: Yes
Contiguous: Yes
Permitted: Yes
Wet space: Yes
Addition: No
Conversion: No

26 Floor 2 - Primary Bedroom

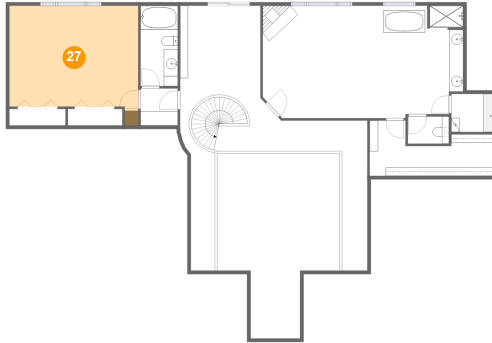


Max Dimensions: 17'1" x 15'11"
Calculated Area: 268 sq. ft
Included: Yes

Heated: Yes
Finished: Yes
Enclosed: Yes
Contiguous: Yes
Permitted: Yes
Wet space: No
Addition: No
Conversion: No

200 Southeast Quail Ridge Loop, Bartlesville, Washington
County, Oklahoma, United States, 74006

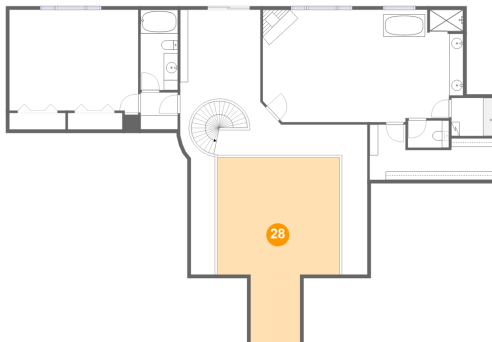
27 Floor 2 - Bedroom



Max Dimensions: 18'3" x 14'10"
Calculated Area: 266 sq. ft
Included: Yes

Heated: Yes
Finished: Yes
Enclosed: Yes
Contiguous: Yes
Permitted: Yes
Wet space: No
Addition: No
Conversion: No

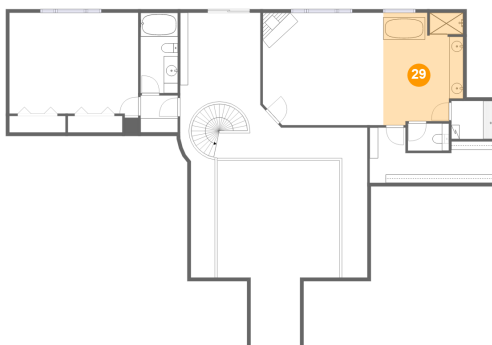
28 Floor 2 - Open To Below



Max Dimensions: 17'4" x 26'2"
Calculated Area: 355 sq. ft
Included: No

Heated: No
Finished: No
Enclosed: No
Contiguous: Yes
Permitted: No
Wet space: No
Addition: No
Conversion: No

29 Floor 2 - Primary Bath

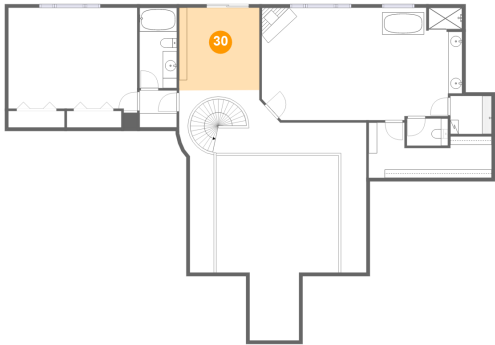


Max Dimensions: 11'4" x 15'11"
Calculated Area: 167 sq. ft
Included: Yes

Heated: Yes
Finished: Yes
Enclosed: Yes
Contiguous: Yes
Permitted: Yes
Wet space: Yes
Addition: No
Conversion: No

200 Southeast Quail Ridge Loop, Bartlesville, Washington
County, Oklahoma, United States, 74006

30 Floor 2 - Room



Max Dimensions: 11'5" x 11'8"
Calculated Area: 133 sq. ft
Included: Yes

Heated: Yes
Finished: Yes
Enclosed: Yes
Contiguous: Yes
Permitted: Yes
Wet space: No
Addition: No
Conversion: No