


Home report

341 Penguin Lane, Salem, Salem city, Virginia, United States, 24153



Property summary

 **1** Garages

 **4** Bedrooms

 **3** Bathrooms

 **1** Half baths

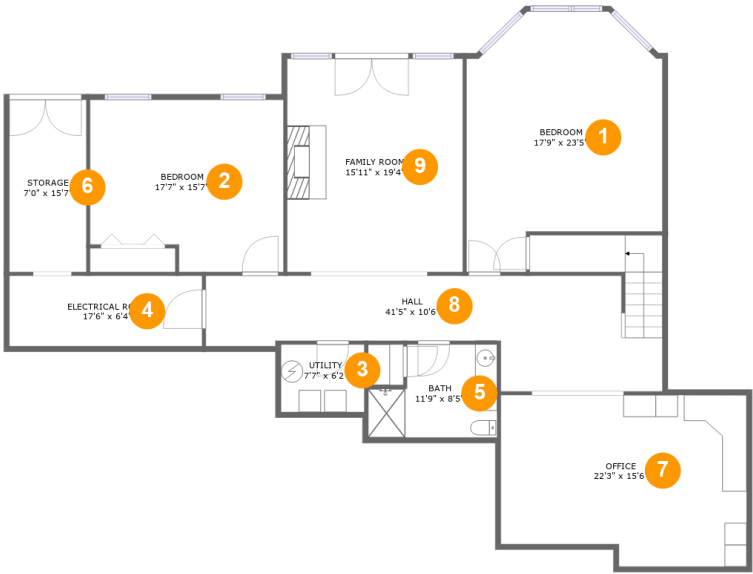
 **2** Floors

 **4,082** Gross living area sqft

 **5,436** Total sqft

Home report

341 Penguin Lane, Salem, Salem city, Virginia, United States, 24153



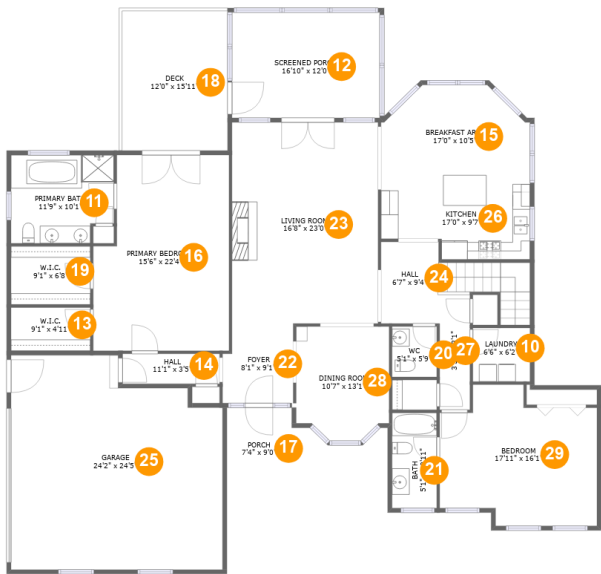
Room dimensions

Floor 1 Total sqft: 2153 Living area: 1853

#		Dimensions	sqft	Counted as living area
1	Bedroom	17'9" x 23'5"	349 sq. ft	Yes
2	Bedroom	17'7" x 15'7"	254 sq. ft	Yes
3	Utility	7'7" x 6'2"	46 sq. ft	No
4	Electrical Room	17'6" x 6'4"	112 sq. ft	No
5	Bath	11'9" x 8'5"	85 sq. ft	Yes
6	Storage	7'0" x 15'7"	109 sq. ft	No
7	Office	22'3" x 15'6"	325 sq. ft	Yes
8	Hall	41'5" x 10'6"	355 sq. ft	Yes
9	Family Room	15'11" x 19'4"	308 sq. ft	Yes

Home report

341 Penguin Lane, Salem, Salem city, Virginia, United States, 24153



Room dimensions

Floor 2 Total sqft: 3283 Living area: 2229

#		Dimensions	sqft	Counted as living area
10	Laundry	6'6" x 6'2"	40 sq. ft	Yes
11	Primary Bath	11'9" x 10'1"	112 sq. ft	Yes
12	Screened Porch	16'10" x 12'0"	203 sq. ft	No
13	W.I.C.	9'1" x 4'11"	45 sq. ft	Yes
14	Hall	11'1" x 3'5"	38 sq. ft	Yes
15	Breakfast Area	17'0" x 10'5"	154 sq. ft	Yes
16	Primary Bedroom	15'6" x 22'4"	318 sq. ft	Yes
17	Porch	7'4" x 9'0"	67 sq. ft	No
18	Deck	12'0" x 15'11"	192 sq. ft	No
19	W.I.C.	9'1" x 6'8"	60 sq. ft	Yes
20	WC	5'1" x 5'9"	29 sq. ft	Yes

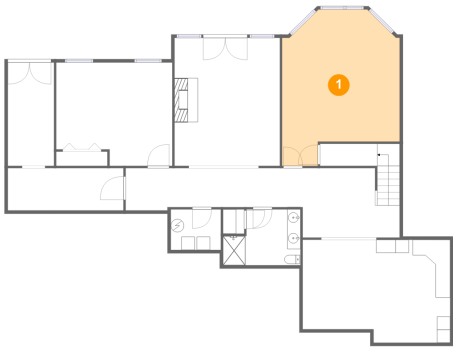
Home report

**341 Penguin Lane, Salem, Salem city, Virginia, United States,
24153**

#		Dimensions	sqft	Counted as living area
21	Bath	5'1" x 10'11"	56 sq. ft	Yes
22	Foyer	8'1" x 9'1"	70 sq. ft	Yes
23	Living Room	16'8" x 23'0"	383 sq. ft	Yes
24	Hall	6'7" x 9'4"	61 sq. ft	Yes
25	Garage	24'2" x 24'5"	537 sq. ft	No
26	Kitchen	17'0" x 9'7"	146 sq. ft	Yes
27	Hall	3'5" x 13'1"	95 sq. ft	Yes
28	Dining Room	10'7" x 13'1"	128 sq. ft	Yes
29	Bedroom	17'11" x 16'1"	242 sq. ft	Yes

341 Penguin Lane, Salem, Salem city, Virginia, United States, 24153

1 Floor 1 - Bedroom



Dimensions: 17'9" x 23'5"
Area: 349 sq. ft
Counted as living area: Yes

Heated: Yes
Finished: Yes
Enclosed: Yes
Contiguous: Yes
Permitted: Yes
Wet space: No
Addition: No
Conversion: No

2 Floor 1 - Bedroom



Dimensions: 17'7" x 15'7"
Area: 254 sq. ft
Counted as living area: Yes

Heated: Yes
Finished: Yes
Enclosed: Yes
Contiguous: Yes
Permitted: Yes
Wet space: No
Addition: No
Conversion: No

341 Penguin Lane, Salem, Salem city, Virginia, United States,
24153

3 Floor 1 - Utility



Dimensions: 7'7" x 6'2"
Area: 46 sq. ft
Counted as living area: No

Heated: Yes
Finished: No
Enclosed: Yes
Contiguous: Yes
Permitted: Yes
Wet space: No
Addition: No
Conversion: No

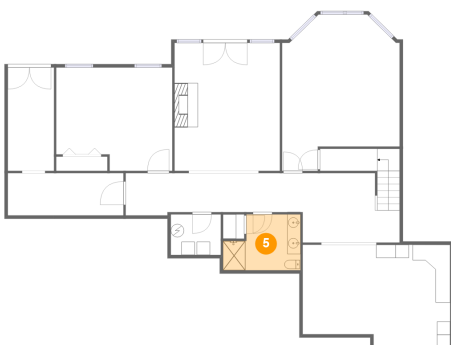
4 Floor 1 - Electrical Room



Dimensions: 17'6" x 6'4"
Area: 112 sq. ft
Counted as living area: No

Heated: No
Finished: No
Enclosed: Yes
Contiguous: Yes
Permitted: Yes
Wet space: No
Addition: No
Conversion: No

5 Floor 1 - Bath



Dimensions: 11'9" x 8'5"
Area: 85 sq. ft
Counted as living area: Yes

Heated: Yes
Finished: Yes
Enclosed: Yes
Contiguous: Yes
Permitted: Yes
Wet space: Yes
Addition: No
Conversion: No

341 Penguin Lane, Salem, Salem city, Virginia, United States,
24153

6 Floor 1 - Storage



Dimensions: 7'0" x 15'7"
Area: 109 sq. ft
Counted as living area: No

Heated: No
Finished: No
Enclosed: No
Contiguous: Yes
Permitted: Yes
Wet space: No
Addition: No
Conversion: No

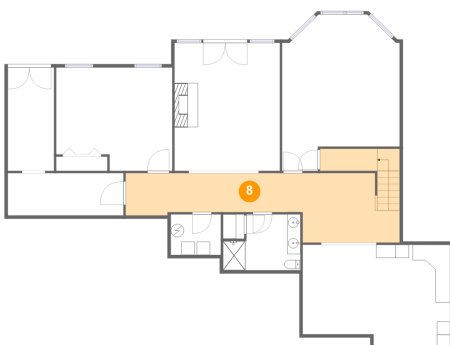
7 Floor 1 - Office



Dimensions: 22'3" x 15'6"
Area: 325 sq. ft
Counted as living area: Yes

Heated: Yes
Finished: Yes
Enclosed: Yes
Contiguous: Yes
Permitted: Yes
Wet space: No
Addition: No
Conversion: No

8 Floor 1 - Hall

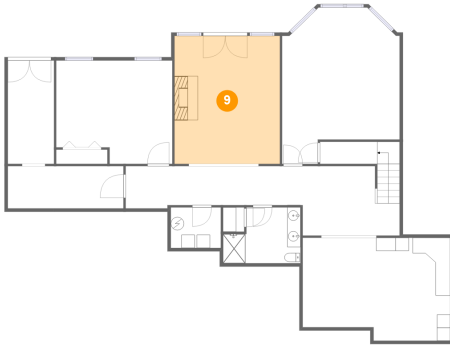


Dimensions: 41'5" x 10'6"
Area: 355 sq. ft
Counted as living area: Yes

Heated: Yes
Finished: Yes
Enclosed: Yes
Contiguous: Yes
Permitted: Yes
Wet space: No
Addition: No
Conversion: No

341 Penguin Lane, Salem, Salem city, Virginia, United States,
24153

9 Floor 1 - Family Room



Dimensions: 15'11" x 19'4"
Area: 308 sq. ft
Counted as living area: Yes

Heated: Yes
Finished: Yes
Enclosed: Yes
Contiguous: Yes
Permitted: Yes
Wet space: No
Addition: No
Conversion: No

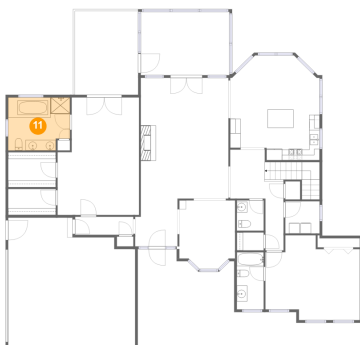
10 Floor 2 - Laundry



Dimensions: 6'6" x 6'2"
Area: 40 sq. ft
Counted as living area: Yes

Heated: Yes
Finished: Yes
Enclosed: Yes
Contiguous: Yes
Permitted: Yes
Wet space: No
Addition: No
Conversion: No

11 Floor 2 - Primary Bath



Dimensions: 11'9" x 10'1"
Area: 112 sq. ft
Counted as living area: Yes

Heated: Yes
Finished: Yes
Enclosed: Yes
Contiguous: Yes
Permitted: Yes
Wet space: Yes
Addition: No
Conversion: No

341 Penguin Lane, Salem, Salem city, Virginia, United States,
24153

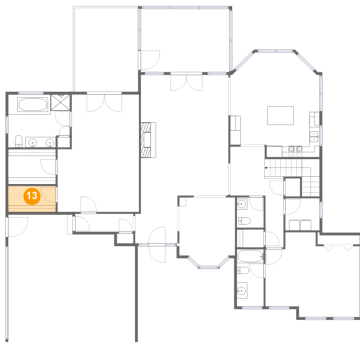
12 Floor 2 - Screened Porch



Dimensions: 16'10" x 12'0"
Area: 203 sq. ft
Counted as living area: No

Heated: No
Finished: Yes
Enclosed: No
Contiguous: Yes
Permitted: Yes
Wet space: No
Addition: No
Conversion: No

13 Floor 2 - W.I.C.



Dimensions: 9'1" x 4'11"
Area: 45 sq. ft
Counted as living area: Yes

Heated: Yes
Finished: Yes
Enclosed: Yes
Contiguous: Yes
Permitted: Yes
Wet space: No
Addition: No
Conversion: No

14 Floor 2 - Hall



Dimensions: 11'1" x 3'5"
Area: 38 sq. ft
Counted as living area: Yes

Heated: Yes
Finished: Yes
Enclosed: Yes
Contiguous: Yes
Permitted: Yes
Wet space: No
Addition: No
Conversion: No

341 Penguin Lane, Salem, Salem city, Virginia, United States,
24153

15 Floor 2 - Breakfast Area



Dimensions: 17'0" x 10'5"
Area: 154 sq. ft
Counted as living area: Yes

Heated: Yes
Finished: Yes
Enclosed: Yes
Contiguous: Yes
Permitted: Yes
Wet space: No
Addition: No
Conversion: No

16 Floor 2 - Primary Bedroom



Dimensions: 15'6" x 22'4"
Area: 318 sq. ft
Counted as living area: Yes

Heated: Yes
Finished: Yes
Enclosed: Yes
Contiguous: Yes
Permitted: Yes
Wet space: No
Addition: No
Conversion: No

17 Floor 2 - Porch



Dimensions: 7'4" x 9'0"
Area: 67 sq. ft
Counted as living area: No

Heated: No
Finished: Yes
Enclosed: No
Contiguous: Yes
Permitted: Yes
Wet space: No
Addition: No
Conversion: No

341 Penguin Lane, Salem, Salem city, Virginia, United States,
24153

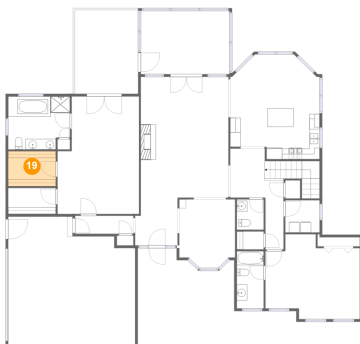
18 Floor 2 - Deck



Dimensions: 12'0" x 15'11"
Area: 192 sq. ft
Counted as living area: No

Heated: No
Finished: Yes
Enclosed: No
Contiguous: Yes
Permitted: Yes
Wet space: No
Addition: No
Conversion: No

19 Floor 2 - W.I.C.



Dimensions: 9'1" x 6'8"
Area: 60 sq. ft
Counted as living area: Yes

Heated: Yes
Finished: Yes
Enclosed: Yes
Contiguous: Yes
Permitted: Yes
Wet space: No
Addition: No
Conversion: No

20 Floor 2 - WC



Dimensions: 5'1" x 5'9"
Area: 29 sq. ft
Counted as living area: Yes

Heated: Yes
Finished: Yes
Enclosed: Yes
Contiguous: Yes
Permitted: Yes
Wet space: Yes
Addition: No
Conversion: No

341 Penguin Lane, Salem, Salem city, Virginia, United States,
24153

21 Floor 2 - Bath



Dimensions: 5'1" x 10'11"
Area: 56 sq. ft
Counted as living area: Yes

Heated: Yes
Finished: Yes
Enclosed: Yes
Contiguous: Yes
Permitted: Yes
Wet space: Yes
Addition: No
Conversion: No

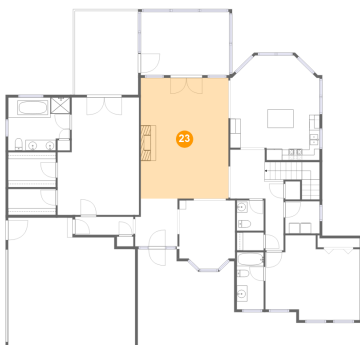
22 Floor 2 - Foyer



Dimensions: 8'1" x 9'1"
Area: 70 sq. ft
Counted as living area: Yes

Heated: Yes
Finished: Yes
Enclosed: Yes
Contiguous: Yes
Permitted: Yes
Wet space: No
Addition: No
Conversion: No

23 Floor 2 - Living Room



Dimensions: 16'8" x 23'0"
Area: 383 sq. ft
Counted as living area: Yes

Heated: Yes
Finished: Yes
Enclosed: Yes
Contiguous: Yes
Permitted: Yes
Wet space: No
Addition: No
Conversion: No

341 Penguin Lane, Salem, Salem city, Virginia, United States,
24153

24 Floor 2 - Hall



Dimensions: 6'7" x 9'4"
Area: 61 sq. ft
Counted as living area: Yes

Heated: Yes
Finished: Yes
Enclosed: Yes
Contiguous: Yes
Permitted: Yes
Wet space: No
Addition: No
Conversion: No

25 Floor 2 - Garage



Dimensions: 24'2" x 24'5"
Area: 537 sq. ft
Counted as living area: No

Heated: No
Finished: No
Enclosed: Yes
Contiguous: Yes
Permitted: Yes
Wet space: No
Addition: No
Conversion: No

26 Floor 2 - Kitchen



Dimensions: 17'0" x 9'7"
Area: 146 sq. ft
Counted as living area: Yes

Heated: Yes
Finished: Yes
Enclosed: Yes
Contiguous: Yes
Permitted: Yes
Wet space: No
Addition: No
Conversion: No

341 Penguin Lane, Salem, Salem city, Virginia, United States,
24153

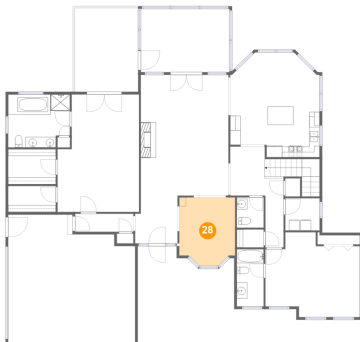
27 Floor 2 - Hall



Dimensions: 3'5" x 13'1"
Area: 95 sq. ft
Counted as living area: Yes

Heated: Yes
Finished: Yes
Enclosed: Yes
Contiguous: Yes
Permitted: Yes
Wet space: No
Addition: No
Conversion: No

28 Floor 2 - Dining Room



Dimensions: 10'7" x 13'1"
Area: 128 sq. ft
Counted as living area: Yes

Heated: Yes
Finished: Yes
Enclosed: Yes
Contiguous: Yes
Permitted: Yes
Wet space: No
Addition: No
Conversion: No

29 Floor 2 - Bedroom



Dimensions: 17'11" x 16'1"
Area: 242 sq. ft
Counted as living area: Yes

Heated: Yes
Finished: Yes
Enclosed: Yes
Contiguous: Yes
Permitted: Yes
Wet space: No
Addition: No
Conversion: No