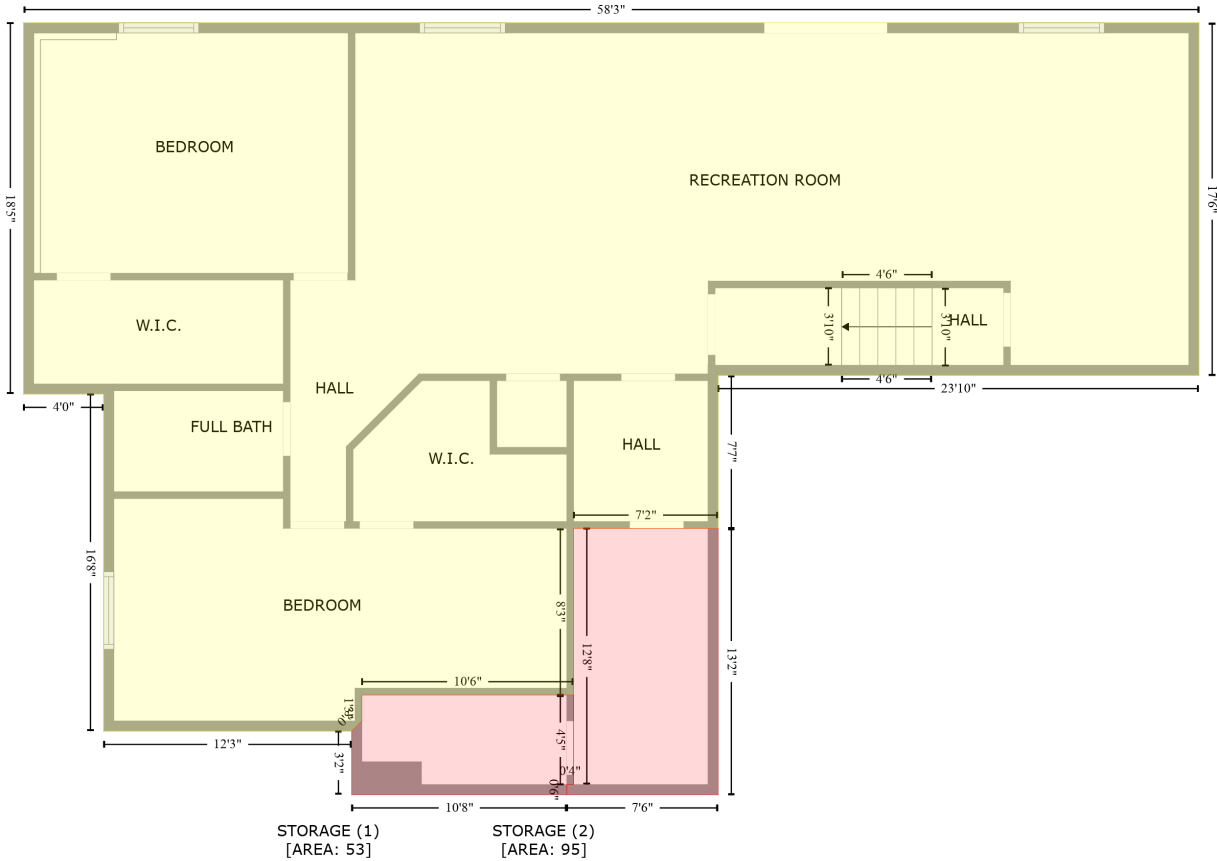


10285 N 7600 W, Tremonton, UT, US

Gross Living Area: 1501 sq. ft

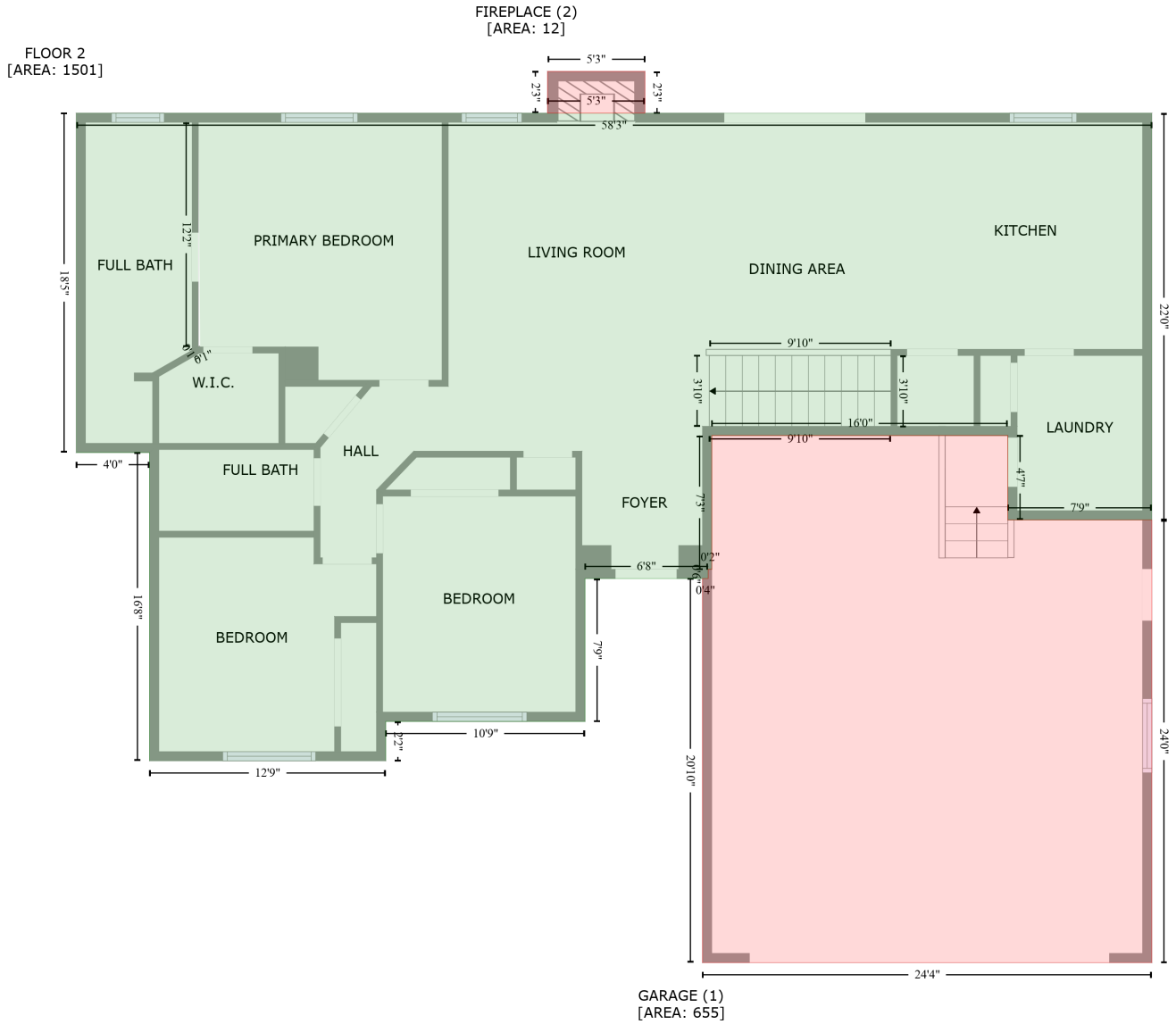
FLOOR 1
[AREA: 1466]



Space	Area (sq. ft)	Calculation <small>Coordinate Polygon Area Algorithm using inches</small>
FLOOR 1 (Living area)	1466	$-\left((701.3 + 701.3) * (10.5 - 220.1) + (701.3 + 415.5) * (220.1 - 220.1) + (415.5 + 415.5) * (220.1 - 311) + (415.5 + 329.5) * (311 - 311) + (329.5 + 329.5) * (311 - 410.1) + (329.5 + 203.7) * (410.1 - 410.1) + (203.7 + 203.7) * (410.1 - 425.6) + (203.7 + 197.7) * (425.6 - 431.6) + (197.7 + 50.2) * (431.6 - 431.6) + (50.2 + 50.2) * (431.6 - 231.2) + (50.2 + 2.6) * (231.2 - 231.2) + (2.6 + 2.6) * (231.2 - 10.5) + (2.6 + 701.3) * (10.5 - 10.5)\right) * 0.5 * 0.00694$
STORAGE (Non-living area)	53	$-\left((329.5 + 329.5) * (410.1 - 463.4) + (329.5 + 325.5) * (463.4 - 463.4) + (325.5 + 325.5) * (463.4 - 469.4) + (325.5 + 197.7) * (469.4 - 469.4) + (197.7 + 197.7) * (469.4 - 431.6) + (197.7 + 203.7) * (431.6 - 425.6) + (203.7 + 203.7) * (425.6 - 410.1) + (203.7 + 329.5) * (410.1 - 410.1)\right) * 0.5 * 0.00694$
STORAGE (Non-living area)	95	$-\left((415.5 + 415.5) * (311 - 469.4) + (415.5 + 325.5) * (469.4 - 469.4) + (325.5 + 325.5) * (469.4 - 463.4) + (325.5 + 329.5) * (463.4 - 463.4) + (329.5 + 329.5) * (463.4 - 311) + (329.5 + 415.5) * (311 - 311)\right) * 0.5 * 0.00694$

10285 N 7600 W, Tremonton, UT, US

Gross Living Area: 1501 sq. ft



Space	Area (sq. ft)	Calculation
FLOOR 2 (Living area)	1501	Coordinate Polygon Area Algorithm using inches $-((701.3 + 701.3) * (10.5 - 275) + (701.3 + 607.8) * (275 - 275) + (607.8 + 607.8) * (275 - 220.1) + (607.8 + 415.4) * (220.1 - 220.1) + (415.4 + 415.4) * (220.1 - 307.1) + (415.4 + 413.1) * (307.1 - 307.1) + (413.1 + 413.1) * (307.1 - 313.1) + (413.1 + 333.1) * (313.1 - 313.1) + (333.1 + 333.1) * (313.1 - 405.9) + (333.1 + 203.6) * (405.9 - 405.9) + (203.6 + 203.6) * (405.9 - 431.6) + (203.6 + 50.2) * (431.6 - 431.6) + (50.2 + 50.2) * (431.6 - 231.2) + (50.2 + 2.6) * (231.2 - 231.2) + (2.6 + 2.6) * (231.2 - 10.5) + (2.6 + 701.3) * (10.5 - 10.5)) * 0.5 * 0.00694 + -((81.9 + 81.9) * (16.5 - 162.2) + (81.9 + 82.6) * (162.2 - 161.9) + (82.6 + 83.1) * (161.9 - 162.5) + (83.1 + 81.9) * (162.5 - 16.5)) * 0.5 * 0.00694$

10285 N 7600 W, Tremonton, UT, US

Gross Living Area: 1501 sq. ft

Space	Area (sq. ft)	Calculation <small>Coordinate Polygon Area Algorithm using inches</small>
GARAGE (Non-living area)	655	$-\left((607.8 + 607.8) * (220.1 - 275) + (607.8 + 701.3) * (275 - 275) + (701.3 + 701.3) * (275 - 562.7) + (701.3 + 409.4) * (562.7 - 562.7) + (409.4 + 409.4) * (562.7 - 313.1) + (409.4 + 413.1) * (313.1 - 313.1) + (413.1 + 413.1) * (313.1 - 307.1) + (413.1 + 415.4) * (307.1 - 307.1) + (415.4 + 415.4) * (307.1 - 220.1) + (415.4 + 607.8) * (220.1 - 220.1)\right) * 0.5 * 0.00694$
FIREPLACE (Non-living area)	12	$-\left((372 + 372) * (-16.6 - 10.5) + (372 + 308.7) * (10.5 - 10.5) + (308.7 + 308.7) * (10.5 - -16.6) + (308.7 + 372) * (-16.6 - -16.6)\right) * 0.5 * 0.00694$