

Home report

125 Grande Villa Drive, Penhook, Franklin County, Virginia,
United States, 24137



Total Area: 4438 sq. ft
Floor 1: 2079 sq. ft, Floor 2: 2359 sq. ft
Excluded: Utility 228 sq. ft, Storage 143 sq. ft, Covered patio 614 sq. ft, Garage 592 sq. ft, Covered deck 567 sq. ft, Porch 143 sq. ft, Walls: 291 sq. ft

Property summary

 **2** Floors

 **4** Bedrooms

 **4** Bathrooms

Home report

**125 Grande Villa Drive, Penhook, Franklin County, Virginia,
United States, 24137**



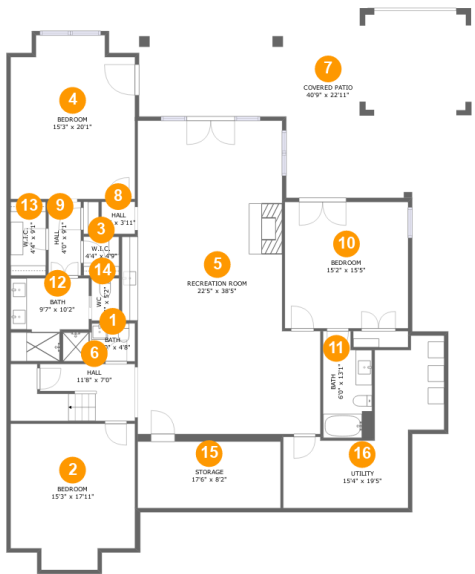
1
Half baths



1
Garages

Home report

125 Grande Villa Drive, Penhook, Franklin County, Virginia,
United States, 24137



Room dimensions

Floor 1 Total:2079sqft Excluded: 985sqft

#		Max Dimensions	sqft	Included
1	Bath	8'10" x 4'8"	37 sq. ft	Yes
2	Bedroom	15'3" x 17'11"	252 sq. ft	Yes
3	W.I.C.	4'4" x 4'9"	21 sq. ft	Yes
4	Bedroom	15'3" x 20'1"	288 sq. ft	Yes
5	Recreation Room	22'5" x 38'5"	761 sq. ft	Yes
6	Hall	11'8" x 7'0"	104 sq. ft	Yes
7	Covered Patio	40'9" x 22'11"	614 sq. ft	No
8	Hall	4'1" x 3'11"	16 sq. ft	Yes
9	Hall	4'0" x 9'1"	36 sq. ft	Yes
10	Bedroom	15'2" x 15'5"	235 sq. ft	Yes
11	Bath	6'0" x 13'1"	72 sq. ft	Yes

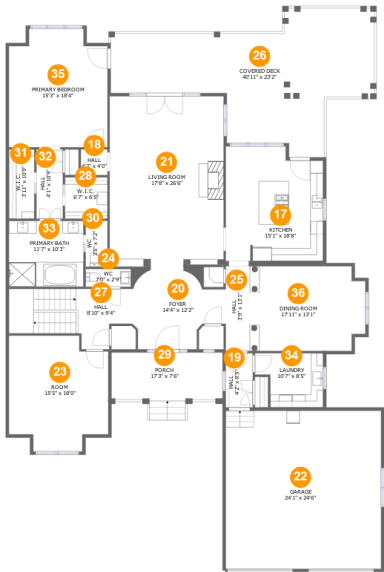
Home report

**125 Grande Villa Drive, Penhook, Franklin County, Virginia,
United States, 24137**

#		Max Dimensions	sqft	Included
12	Bath	9'7" x 10'2"	83 sq. ft	Yes
13	W.I.C.	4'4" x 9'1"	39 sq. ft	Yes
14	WC	3'4" x 5'2"	18 sq. ft	Yes
15	Storage	17'6" x 8'2"	143 sq. ft	No
16	Utility	15'4" x 19'5"	225 sq. ft	No

Home report

125 Grande Villa Drive, Penhook, Franklin County, Virginia,
United States, 24137



Room dimensions

Floor 2 Total:2359sqft Excluded: 1302sqft

#		Max Dimensions	sqft	Included
17	Kitchen	15'1" x 18'8"	257 sq. ft	Yes
18	Hall	4'2" x 4'0"	17 sq. ft	Yes
19	Hall	4'2" x 8'5"	35 sq. ft	Yes
20	Foyer	14'4" x 12'2"	143 sq. ft	Yes
21	Living Room	17'8" x 26'6"	466 sq. ft	Yes
22	Garage	24'1" x 24'6"	592 sq. ft	No
23	Room	15'5" x 18'0"	245 sq. ft	Yes
24	WC	7'0" x 2'9"	19 sq. ft	Yes
25	Hall	3'9" x 13'1"	49 sq. ft	Yes
26	Covered Deck	40'11" x 23'2"	567 sq. ft	No
27	Hall	8'10" x 9'4"	138 sq. ft	Yes

Home report

**125 Grande Villa Drive, Penhook, Franklin County, Virginia,
United States, 24137**

#		Max Dimensions	sqft	Included
28	W.I.C.	6'7" x 6'5"	42 sq. ft	Yes
29	Porch	17'3" x 7'6"	144 sq. ft	No
30	WC	3'5" x 7'2"	24 sq. ft	Yes
31	W.I.C.	3'11" x 10'9"	42 sq. ft	Yes
32	Hall	4'1" x 10'9"	44 sq. ft	Yes
33	Primary Bath	11'7" x 10'3"	118 sq. ft	Yes
34	Laundry	10'7" x 8'5"	77 sq. ft	Yes
35	Primary Bedroom	15'3" x 18'4"	263 sq. ft	Yes
36	Dining Room	17'11" x 13'1"	224 sq. ft	Yes

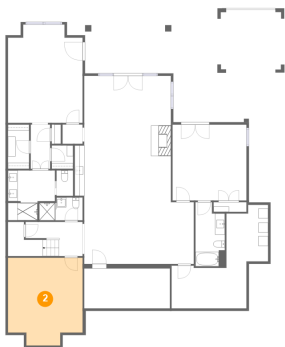
1 Floor 1 - Bath



Max Dimensions: 8'10" x 4'8"
Calculated Area: 37 sq. ft
Included: Yes

Heated: Yes
Finished: Yes
Enclosed: Yes
Contiguous: Yes
Permitted: Yes
Wet space: Yes
Addition: No
Conversion: No

2 Floor 1 - Bedroom



Max Dimensions: 15'3" x 17'11"
Calculated Area: 252 sq. ft
Included: Yes

Heated: Yes
Finished: Yes
Enclosed: Yes
Contiguous: Yes
Permitted: Yes
Wet space: No
Addition: No
Conversion: No

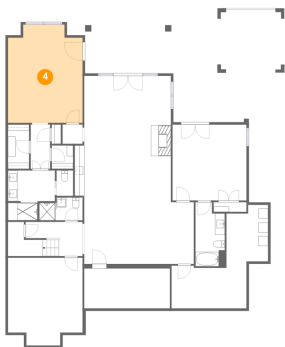
3 Floor 1 - W.I.C.



Max Dimensions: 4'4" x 4'9"
Calculated Area: 21 sq. ft
Included: Yes

Heated: Yes
Finished: Yes
Enclosed: Yes
Contiguous: Yes
Permitted: Yes
Wet space: No
Addition: No
Conversion: No

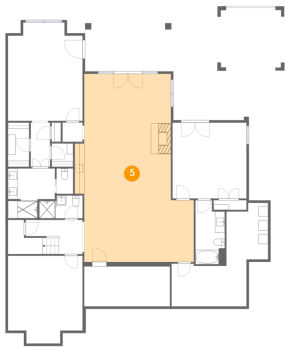
4 Floor 1 - Bedroom



Max Dimensions: 15'3" x 20'1"
Calculated Area: 288 sq. ft
Included: Yes

Heated: Yes
Finished: Yes
Enclosed: Yes
Contiguous: Yes
Permitted: Yes
Wet space: No
Addition: No
Conversion: No

5 Floor 1 - Recreation Room



Max Dimensions: 22'5" x 38'5"
Calculated Area: 761 sq. ft
Included: Yes

Heated: Yes
Finished: Yes
Enclosed: Yes
Contiguous: Yes
Permitted: Yes
Wet space: No
Addition: No
Conversion: No

125 Grande Villa Drive, Penhook, Franklin County, Virginia,
United States, 24137

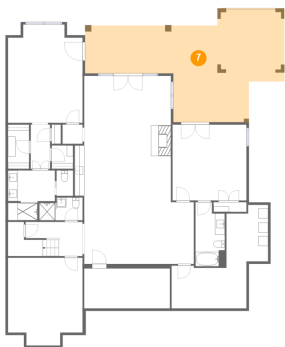
6 Floor 1 - Hall



Max Dimensions: 11'8" x 7'0"
Calculated Area: 104 sq. ft
Included: Yes

Heated: Yes
Finished: Yes
Enclosed: Yes
Contiguous: Yes
Permitted: Yes
Wet space: No
Addition: No
Conversion: No

7 Floor 1 - Covered Patio



Max Dimensions: 40'9" x 22'11"
Calculated Area: 614 sq. ft
Included: No

Heated: No
Finished: Yes
Enclosed: No
Contiguous: Yes
Permitted: Yes
Wet space: No
Addition: No
Conversion: No

8 Floor 1 - Hall



Max Dimensions: 4'1" x 3'11"
Calculated Area: 16 sq. ft
Included: Yes

Heated: Yes
Finished: Yes
Enclosed: Yes
Contiguous: Yes
Permitted: Yes
Wet space: No
Addition: No
Conversion: No

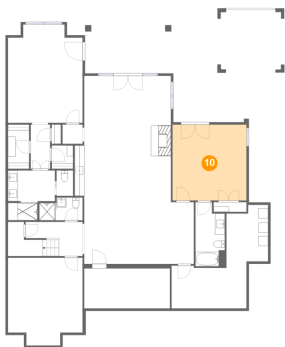
9 Floor 1 - Hall



Max Dimensions: 4'0" x 9'1"
Calculated Area: 36 sq. ft
Included: Yes

Heated: Yes
Finished: Yes
Enclosed: Yes
Contiguous: Yes
Permitted: Yes
Wet space: No
Addition: No
Conversion: No

10 Floor 1 - Bedroom



Max Dimensions: 15'2" x 15'5"
Calculated Area: 235 sq. ft
Included: Yes

Heated: Yes
Finished: Yes
Enclosed: Yes
Contiguous: Yes
Permitted: Yes
Wet space: No
Addition: No
Conversion: No

11 Floor 1 - Bath

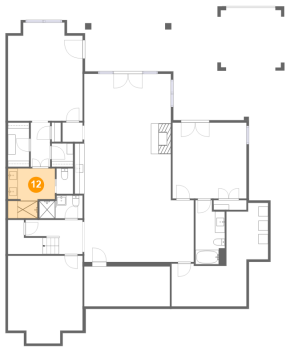


Max Dimensions: 6'0" x 13'1"
Calculated Area: 72 sq. ft
Included: Yes

Heated: Yes
Finished: Yes
Enclosed: Yes
Contiguous: Yes
Permitted: Yes
Wet space: Yes
Addition: No
Conversion: No

125 Grande Villa Drive, Penhook, Franklin County, Virginia,
United States, 24137

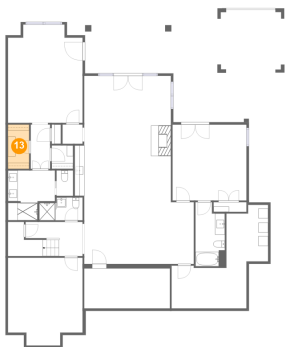
12 Floor 1 - Bath



Max Dimensions: 9'7" x 10'2"
Calculated Area: 83 sq. ft
Included: Yes

Heated: Yes
Finished: Yes
Enclosed: Yes
Contiguous: Yes
Permitted: Yes
Wet space: Yes
Addition: No
Conversion: No

13 Floor 1 - W.I.C.



Max Dimensions: 4'4" x 9'1"
Calculated Area: 39 sq. ft
Included: Yes

Heated: Yes
Finished: Yes
Enclosed: Yes
Contiguous: Yes
Permitted: Yes
Wet space: No
Addition: No
Conversion: No

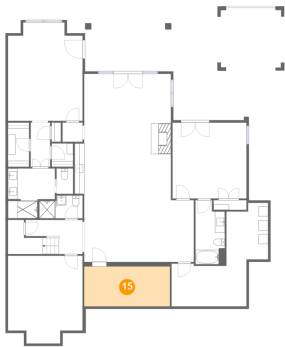
14 Floor 1 - WC



Max Dimensions: 3'4" x 5'2"
Calculated Area: 18 sq. ft
Included: Yes

Heated: Yes
Finished: Yes
Enclosed: Yes
Contiguous: Yes
Permitted: Yes
Wet space: Yes
Addition: No
Conversion: No

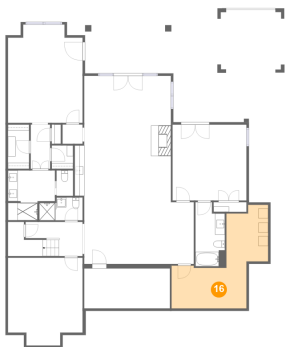
15 Floor 1 - Storage



Max Dimensions: 17'6" x 8'2"
Calculated Area: 143 sq. ft
Included: No

Heated: No
Finished: No
Enclosed: No
Contiguous: Yes
Permitted: Yes
Wet space: No
Addition: No
Conversion: No

16 Floor 1 - Utility



Max Dimensions: 15'4" x 19'5"
Calculated Area: 225 sq. ft
Included: No

Heated: Yes
Finished: No
Enclosed: Yes
Contiguous: Yes
Permitted: Yes
Wet space: No
Addition: No
Conversion: No

17 Floor 2 - Kitchen



Max Dimensions: 15'1" x 18'8"
Calculated Area: 257 sq. ft
Included: Yes

Heated: Yes
Finished: Yes
Enclosed: Yes
Contiguous: Yes
Permitted: Yes
Wet space: No
Addition: No
Conversion: No

18 Floor 2 - Hall



Max Dimensions: 4'2" x 4'0"
Calculated Area: 17 sq. ft
Included: Yes

Heated: Yes
Finished: Yes
Enclosed: Yes
Contiguous: Yes
Permitted: Yes
Wet space: No
Addition: No
Conversion: No

19 Floor 2 - Hall



Max Dimensions: 4'2" x 8'5"
Calculated Area: 35 sq. ft
Included: Yes

Heated: Yes
Finished: Yes
Enclosed: Yes
Contiguous: Yes
Permitted: Yes
Wet space: No
Addition: No
Conversion: No

20 Floor 2 - Foyer



Max Dimensions: 14'4" x 12'2"
Calculated Area: 143 sq. ft
Included: Yes

Heated: Yes
Finished: Yes
Enclosed: Yes
Contiguous: Yes
Permitted: Yes
Wet space: No
Addition: No
Conversion: No

21 Floor 2 - Living Room



Max Dimensions: 17'8" x 26'6"
Calculated Area: 466 sq. ft
Included: Yes

Heated: Yes
Finished: Yes
Enclosed: Yes
Contiguous: Yes
Permitted: Yes
Wet space: No
Addition: No
Conversion: No

22 Floor 2 - Garage



Max Dimensions: 24'1" x 24'6"
Calculated Area: 592 sq. ft
Included: No

Heated: No
Finished: No
Enclosed: Yes
Contiguous: Yes
Permitted: Yes
Wet space: No
Addition: No
Conversion: No

23 Floor 2 - Room



Max Dimensions: 15'5" x 18'0"
Calculated Area: 245 sq. ft
Included: Yes

Heated: Yes
Finished: Yes
Enclosed: Yes
Contiguous: Yes
Permitted: Yes
Wet space: No
Addition: No
Conversion: No

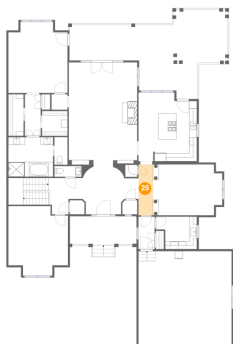
24 Floor 2 - WC



Max Dimensions: 7'0" x 2'9"
Calculated Area: 19 sq. ft
Included: Yes

Heated: Yes
Finished: Yes
Enclosed: Yes
Contiguous: Yes
Permitted: Yes
Wet space: No
Addition: No
Conversion: No

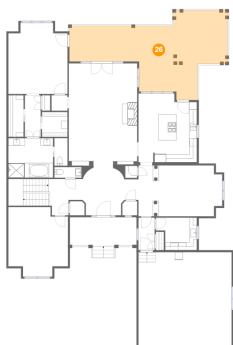
25 Floor 2 - Hall



Max Dimensions: 3'9" x 13'1"
Calculated Area: 49 sq. ft
Included: Yes

Heated: Yes
Finished: Yes
Enclosed: Yes
Contiguous: Yes
Permitted: Yes
Wet space: No
Addition: No
Conversion: No

26 Floor 2 - Covered Deck



Max Dimensions: 40'11" x 23'2"
Calculated Area: 567 sq. ft
Included: No

Heated: No
Finished: Yes
Enclosed: No
Contiguous: Yes
Permitted: Yes
Wet space: No
Addition: No
Conversion: No

27 Floor 2 - Hall



Max Dimensions: 8'10" x 9'4"
Calculated Area: 138 sq. ft
Included: Yes

Heated: Yes
Finished: Yes
Enclosed: Yes
Contiguous: Yes
Permitted: Yes
Wet space: No
Addition: No
Conversion: No

28 Floor 2 - W.I.C.



Max Dimensions: 6'7" x 6'5"
Calculated Area: 42 sq. ft
Included: Yes

Heated: Yes
Finished: Yes
Enclosed: Yes
Contiguous: Yes
Permitted: Yes
Wet space: No
Addition: No
Conversion: No

29 Floor 2 - Porch



Max Dimensions: 17'3" x 7'6"
Calculated Area: 144 sq. ft
Included: No

Heated: No
Finished: Yes
Enclosed: No
Contiguous: Yes
Permitted: Yes
Wet space: No
Addition: No
Conversion: No

30 Floor 2 - WC



Max Dimensions: 3'5" x 7'2"
Calculated Area: 24 sq. ft
Included: Yes

Heated: Yes
Finished: Yes
Enclosed: Yes
Contiguous: Yes
Permitted: Yes
Wet space: Yes
Addition: No
Conversion: No

31 Floor 2 - W.I.C.



Max Dimensions: 3'11" x 10'9"
Calculated Area: 42 sq. ft
Included: Yes

Heated: Yes
Finished: Yes
Enclosed: Yes
Contiguous: Yes
Permitted: Yes
Wet space: No
Addition: No
Conversion: No

32 Floor 2 - Hall



Max Dimensions: 4'1" x 10'9"
Calculated Area: 44 sq. ft
Included: Yes

Heated: Yes
Finished: Yes
Enclosed: Yes
Contiguous: Yes
Permitted: Yes
Wet space: No
Addition: No
Conversion: No

125 Grande Villa Drive, Penhook, Franklin County, Virginia,
United States, 24137

33 Floor 2 - Primary Bath



Max Dimensions: 11'7" x 10'3"
Calculated Area: 118 sq. ft
Included: Yes

Heated: Yes
Finished: Yes
Enclosed: Yes
Contiguous: Yes
Permitted: Yes
Wet space: Yes
Addition: No
Conversion: No

34 Floor 2 - Laundry



Max Dimensions: 10'7" x 8'5"
Calculated Area: 77 sq. ft
Included: Yes

Heated: Yes
Finished: Yes
Enclosed: Yes
Contiguous: Yes
Permitted: Yes
Wet space: No
Addition: No
Conversion: No

35 Floor 2 - Primary Bedroom



Max Dimensions: 15'3" x 18'4"
Calculated Area: 263 sq. ft
Included: Yes

Heated: Yes
Finished: Yes
Enclosed: Yes
Contiguous: Yes
Permitted: Yes
Wet space: No
Addition: No
Conversion: No

125 Grande Villa Drive, Penhook, Franklin County, Virginia,
United States, 24137

36 Floor 2 - Dining Room



Max Dimensions: 17'11" x 13'1"
Calculated Area: 224 sq. ft
Included: Yes

Heated: Yes
Finished: Yes
Enclosed: Yes
Contiguous: Yes
Permitted: Yes
Wet space: No
Addition: No
Conversion: No