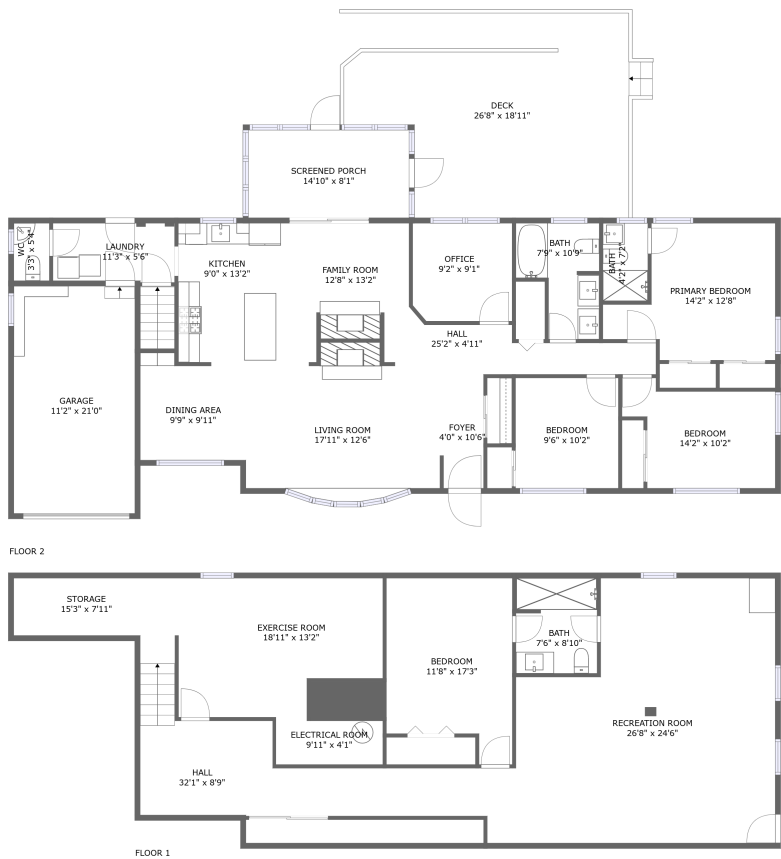




Home report


2208 Muskogee Street, White Oak Manor, Adelphi, Prince George's County, Maryland, United States, 20783




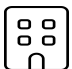
Property summary


 **1** Garages


 **4** Bedrooms

 **3** Bathrooms

 **1** Half baths

 **2** Floors

 **3,007** Gross living area sqft

 **3,989** Total sqft

Home report

2208 Muskogee Street, White Oak Manor, Adelphi, Prince George's County, Maryland, United States, 20783



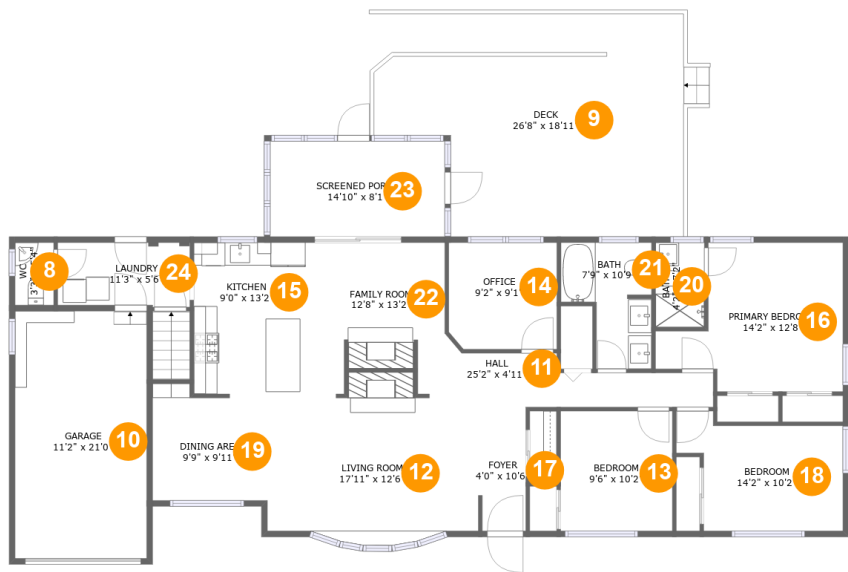
Room dimensions

Floor 1 Total sqft: 1572 Living area: 1425

#		Max Dimensions	sqft	Included
1	Exercise Room	18'11" x 13'2"	219 sq. ft	Yes
2	Hall	32'1" x 8'9"	212 sq. ft	Yes
3	Bedroom	11'8" x 17'3"	176 sq. ft	Yes
4	Storage	15'3" x 7'11"	89 sq. ft	No
5	Bath	7'6" x 8'10"	65 sq. ft	Yes
6	Electrical Room	9'11" x 4'1"	40 sq. ft	No
7	Recreation Room	26'8" x 24'6"	534 sq. ft	Yes

Home report

2208 Muskogee Street, White Oak Manor, Adelphi, Prince George's County, Maryland, United States, 20783



Room dimensions

Floor 2 Total sqft: 2417 Living area: 1582

#		Max Dimensions	sqft	Included
8	WC	3'3" x 5'4"	17 sq. ft	Yes
9	Deck	26'8" x 18'11"	444 sq. ft	No
10	Garage	11'2" x 21'0"	235 sq. ft	No
11	Hall	25'2" x 4'11"	93 sq. ft	Yes
12	Living Room	17'11" x 12'6"	225 sq. ft	Yes
13	Bedroom	9'6" x 10'2"	97 sq. ft	Yes
14	Office	9'2" x 9'1"	82 sq. ft	Yes
15	Kitchen	9'0" x 13'2"	118 sq. ft	Yes
16	Primary Bedroom	14'2" x 12'8"	152 sq. ft	Yes
17	Foyer	4'0" x 10'6"	41 sq. ft	Yes
18	Bedroom	14'2" x 10'2"	115 sq. ft	Yes

Home report

2208 Muskogee Street, White Oak Manor, Adelphi, Prince George's County, Maryland, United States, 20783

#		Max Dimensions	sqft	Included
19	Dining Area	9'9" x 9'11"	89 sq. ft	Yes
20	Bath	4'2" x 7'2"	30 sq. ft	Yes
21	Bath	7'9" x 10'9"	65 sq. ft	Yes
22	Family Room	12'8" x 13'2"	134 sq. ft	Yes
23	Screened Porch	14'10" x 8'1"	121 sq. ft	No
24	Laundry	11'3" x 5'6"	60 sq. ft	Yes

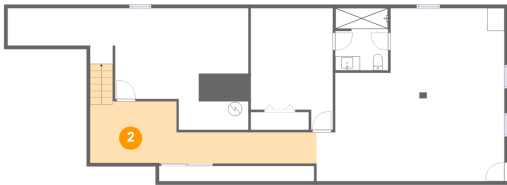
1 Floor 1 - Exercise Room



Max Dimensions: 18'11" x 13'2"
Calculated Area: 219 sq. ft
Included: Yes

Heated: Yes
Finished: Yes
Enclosed: Yes
Contiguous: Yes
Permitted: Yes
Wet space: No
Addition: No
Conversion: No

2 Floor 1 - Hall



Max Dimensions: 32'1" x 8'9"
Calculated Area: 212 sq. ft
Included: Yes

Heated: Yes
Finished: Yes
Enclosed: Yes
Contiguous: Yes
Permitted: Yes
Wet space: No
Addition: No
Conversion: No

2208 Muskogee Street, White Oak Manor, Adelphi, Prince George's County, Maryland, United States, 20783

3 Floor 1 - Bedroom



Max Dimensions: 11'8" x 17'3"
Calculated Area: 176 sq. ft
Included: Yes

Heated: Yes
Finished: Yes
Enclosed: Yes
Contiguous: Yes
Permitted: Yes
Wet space: No
Addition: No
Conversion: No

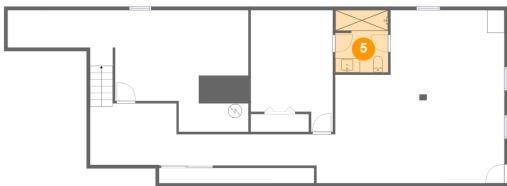
4 Floor 1 - Storage



Max Dimensions: 15'3" x 7'11"
Calculated Area: 89 sq. ft
Included: No

Heated: No
Finished: No
Enclosed: No
Contiguous: Yes
Permitted: Yes
Wet space: No
Addition: No
Conversion: No

5 Floor 1 - Bath



Max Dimensions: 7'6" x 8'10"
Calculated Area: 65 sq. ft
Included: Yes

Heated: Yes
Finished: Yes
Enclosed: Yes
Contiguous: Yes
Permitted: Yes
Wet space: Yes
Addition: No
Conversion: No

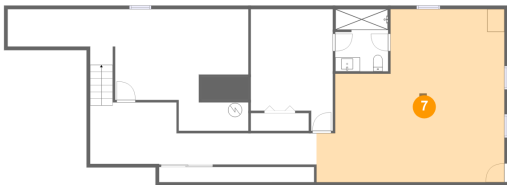
6 Floor 1 - Electrical Room



Max Dimensions: 9'11" x 4'1"
Calculated Area: 40 sq. ft
Included: No

Heated: No
Finished: No
Enclosed: Yes
Contiguous: Yes
Permitted: Yes
Wet space: No
Addition: No
Conversion: No

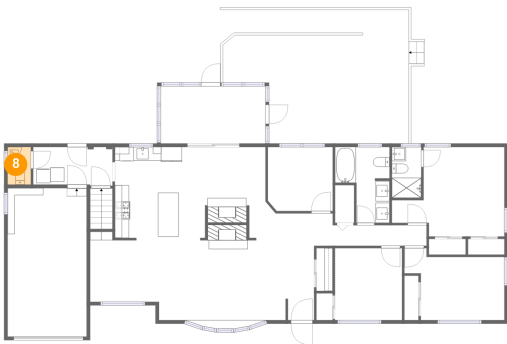
7 Floor 1 - Recreation Room



Max Dimensions: 26'8" x 24'6"
Calculated Area: 534 sq. ft
Included: Yes

Heated: Yes
Finished: Yes
Enclosed: Yes
Contiguous: Yes
Permitted: Yes
Wet space: No
Addition: No
Conversion: No

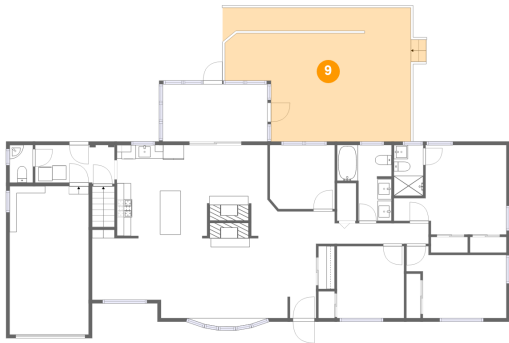
8 Floor 2 - WC



Max Dimensions: 3'3" x 5'4"
Calculated Area: 17 sq. ft
Included: Yes

Heated: Yes
Finished: Yes
Enclosed: Yes
Contiguous: Yes
Permitted: Yes
Wet space: Yes
Addition: No
Conversion: No

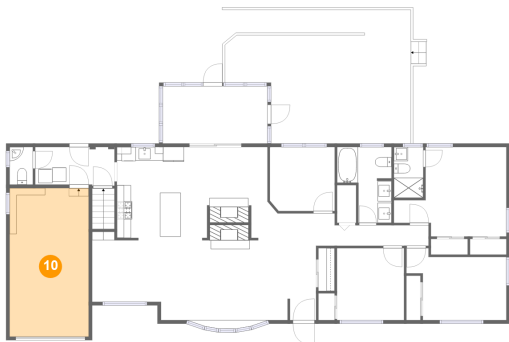
9 Floor 2 - Deck



Max Dimensions: 26'8" x 18'11"
Calculated Area: 444 sq. ft
Included: No

Heated: No
Finished: Yes
Enclosed: No
Contiguous: Yes
Permitted: Yes
Wet space: No
Addition: No
Conversion: No

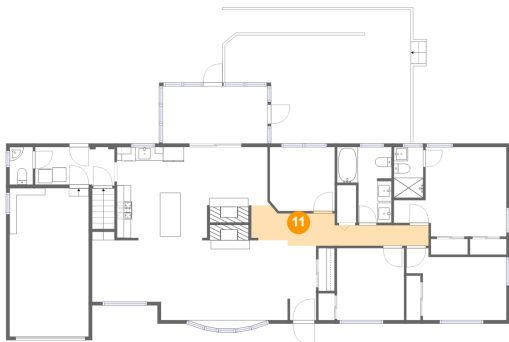
10 Floor 2 - Garage



Max Dimensions: 11'2" x 21'0"
Calculated Area: 235 sq. ft
Included: No

Heated: No
Finished: No
Enclosed: Yes
Contiguous: Yes
Permitted: Yes
Wet space: No
Addition: No
Conversion: No

11 Floor 2 - Hall

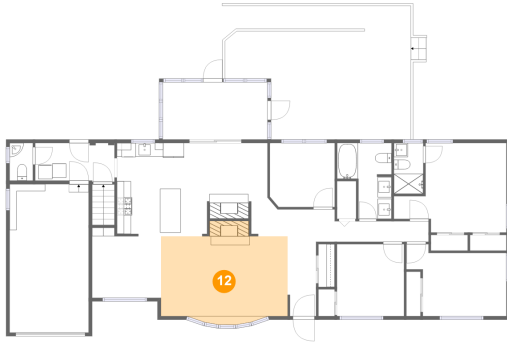


Max Dimensions: 25'2" x 4'11"
Calculated Area: 93 sq. ft
Included: Yes

Heated: Yes
Finished: Yes
Enclosed: Yes
Contiguous: Yes
Permitted: Yes
Wet space: No
Addition: No
Conversion: No

2208 Muskogee Street, White Oak Manor, Adelphi, Prince
George's County, Maryland, United States, 20783

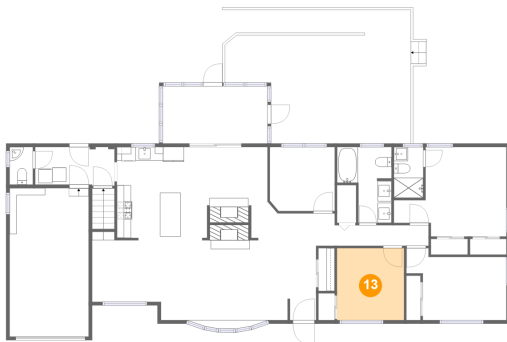
12 Floor 2 - Living Room



Max Dimensions: 17'11" x 12'6"
Calculated Area: 225 sq. ft
Included: Yes

Heated: Yes
Finished: Yes
Enclosed: Yes
Contiguous: Yes
Permitted: Yes
Wet space: No
Addition: No
Conversion: No

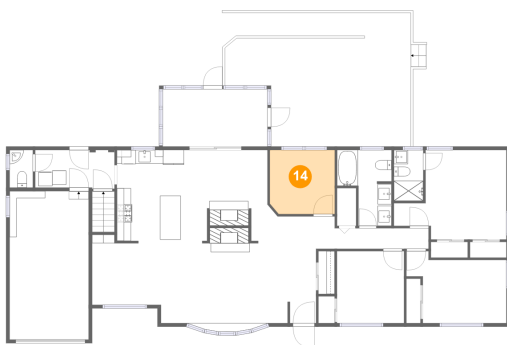
13 Floor 2 - Bedroom



Max Dimensions: 9'6" x 10'2"
Calculated Area: 97 sq. ft
Included: Yes

Heated: Yes
Finished: Yes
Enclosed: Yes
Contiguous: Yes
Permitted: Yes
Wet space: No
Addition: No
Conversion: No

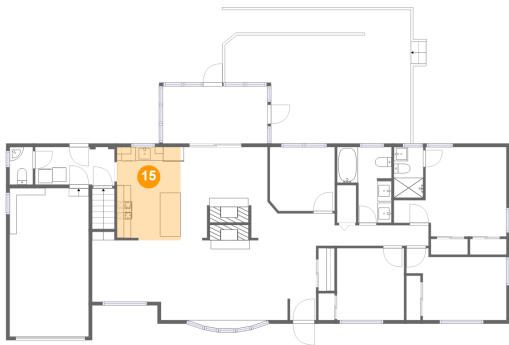
14 Floor 2 - Office



Max Dimensions: 9'2" x 9'1"
Calculated Area: 82 sq. ft
Included: Yes

Heated: Yes
Finished: Yes
Enclosed: Yes
Contiguous: Yes
Permitted: Yes
Wet space: No
Addition: No
Conversion: No

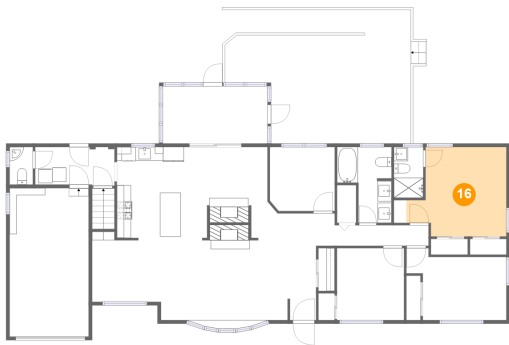
15 Floor 2 - Kitchen



Max Dimensions: 9'0" x 13'2"
Calculated Area: 118 sq. ft
Included: Yes

Heated: Yes
Finished: Yes
Enclosed: Yes
Contiguous: Yes
Permitted: Yes
Wet space: No
Addition: No
Conversion: No

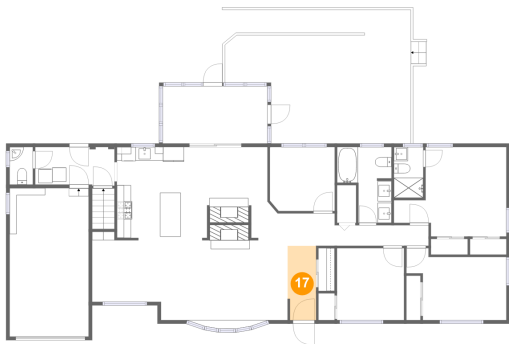
16 Floor 2 - Primary Bedroom



Max Dimensions: 14'2" x 12'8"
Calculated Area: 152 sq. ft
Included: Yes

Heated: Yes
Finished: Yes
Enclosed: Yes
Contiguous: Yes
Permitted: Yes
Wet space: No
Addition: No
Conversion: No

17 Floor 2 - Foyer

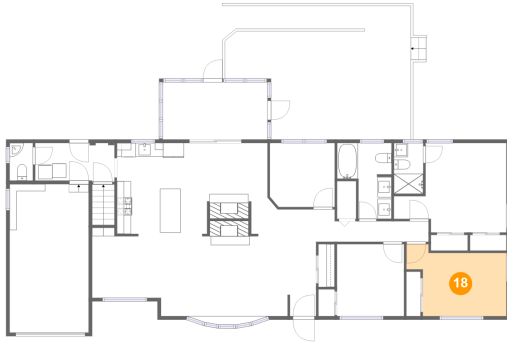


Max Dimensions: 4'0" x 10'6"
Calculated Area: 41 sq. ft
Included: Yes

Heated: Yes
Finished: Yes
Enclosed: Yes
Contiguous: Yes
Permitted: Yes
Wet space: No
Addition: No
Conversion: No

2208 Muskogee Street, White Oak Manor, Adelphi, Prince
George's County, Maryland, United States, 20783

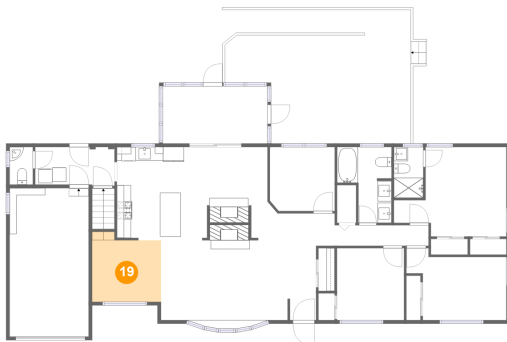
18 Floor 2 - Bedroom



Max Dimensions: 14'2" x 10'2"
Calculated Area: 115 sq. ft
Included: Yes

Heated: Yes
Finished: Yes
Enclosed: Yes
Contiguous: Yes
Permitted: Yes
Wet space: No
Addition: No
Conversion: No

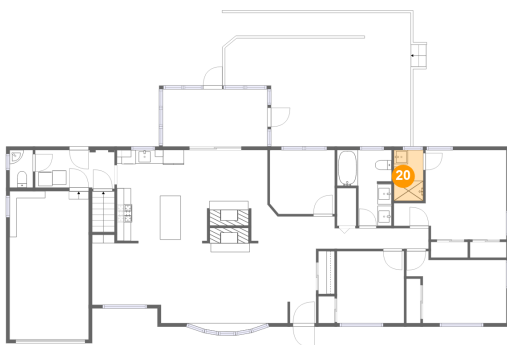
19 Floor 2 - Dining Area



Max Dimensions: 9'9" x 9'11"
Calculated Area: 89 sq. ft
Included: Yes

Heated: Yes
Finished: Yes
Enclosed: Yes
Contiguous: Yes
Permitted: Yes
Wet space: No
Addition: No
Conversion: No

20 Floor 2 - Bath

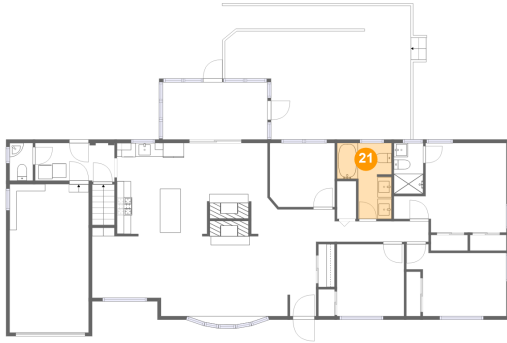


Max Dimensions: 4'2" x 7'2"
Calculated Area: 30 sq. ft
Included: Yes

Heated: Yes
Finished: Yes
Enclosed: Yes
Contiguous: Yes
Permitted: Yes
Wet space: Yes
Addition: No
Conversion: No

2208 Muskogee Street, White Oak Manor, Adelphi, Prince
George's County, Maryland, United States, 20783

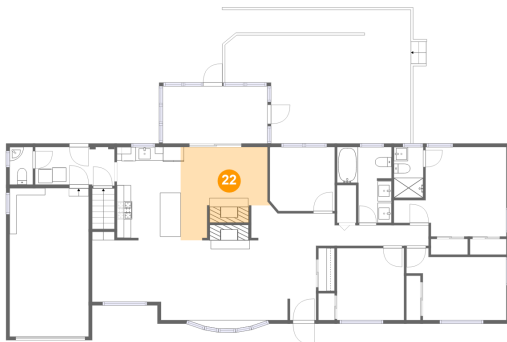
21 Floor 2 - Bath



Max Dimensions: 7'9" x
10'9"
Calculated Area: 65 sq. ft
Included: Yes

Heated: Yes
Finished: Yes
Enclosed: Yes
Contiguous:
Yes
Permitted: Yes
Wet space: Yes
Addition: No
Conversion: No

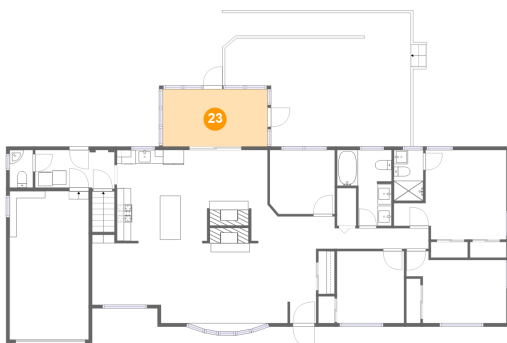
22 Floor 2 - Family Room



Max Dimensions: 12'8" x
13'2"
Calculated Area: 134 sq. ft
Included: Yes

Heated: Yes
Finished: Yes
Enclosed: Yes
Contiguous:
Yes
Permitted: Yes
Wet space: No
Addition: No
Conversion: No

23 Floor 2 - Screened Porch

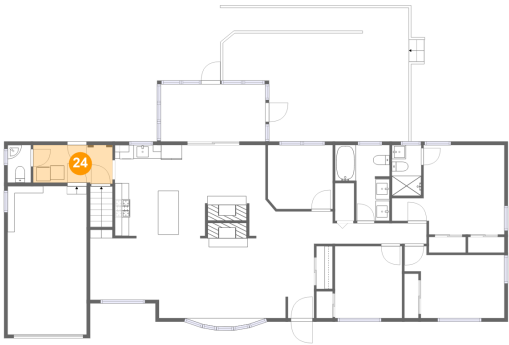


Max Dimensions: 14'10" x
8'1"
Calculated Area: 121 sq. ft
Included: No

Heated: No
Finished: Yes
Enclosed: No
Contiguous:
Yes
Permitted: Yes
Wet space: No
Addition: No
Conversion: No

2208 Muskogee Street, White Oak Manor, Adelphi, Prince
George's County, Maryland, United States, 20783

24 Floor 2 - Laundry



Max Dimensions: 11'3" x 5'6"
Calculated Area: 60 sq. ft
Included: Yes

Heated: Yes
Finished: Yes
Enclosed: Yes
Contiguous: Yes
Permitted: Yes
Wet space: No
Addition: No
Conversion: No