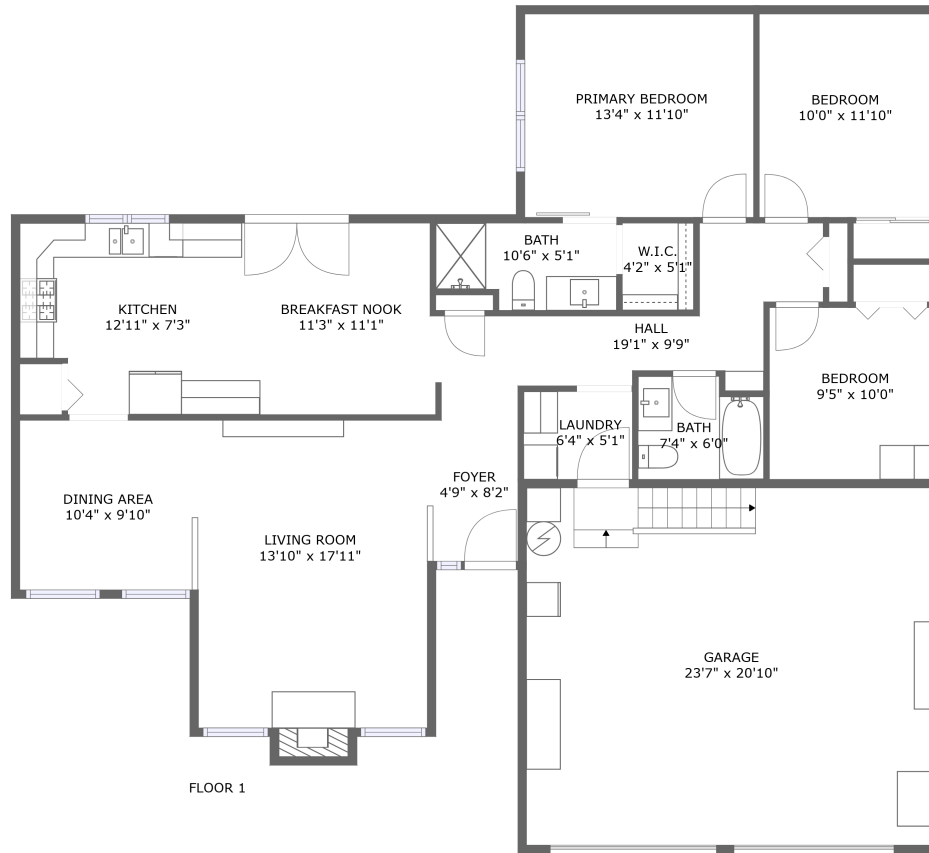



# 15130 S Greentree Dr, Oregon City, OR, US



## Property summary


 **1** Garages

 **3** Bedrooms

 **2** Bathrooms

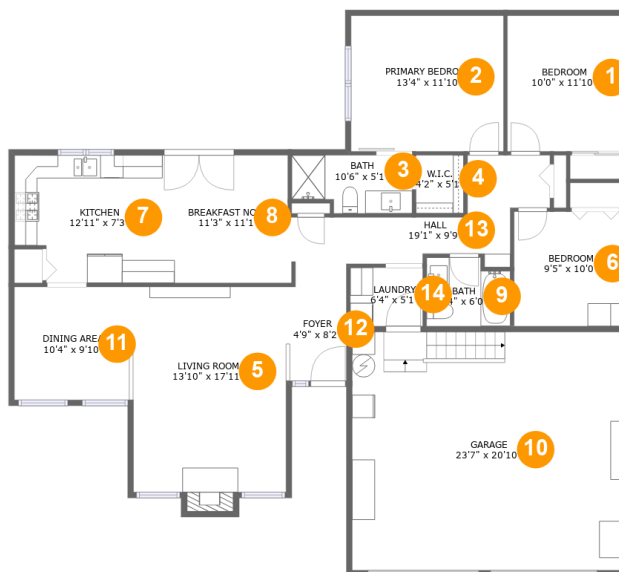
 **0** Half baths

 **1** Floors

 **1,460** Gross living area sqft

 **1,989** Total sqft

# 15130 S Greentree Dr, Oregon City, OR, US



## Room dimensions

Floor 1

Total sqft: 1989 Living area: 1460

#		Dimensions	sqft	Counted as living area
1	Bedroom	10'0" x 11'10"	118 sq. ft	Yes
2	Bedroom	13'4" x 11'10"	158 sq. ft	Yes
3	Bath	10'6" x 5'1"	49 sq. ft	Yes
4	Cl	4'2" x 5'1"	21 sq. ft	Yes
5	Living Room	13'10" x 17'11"	250 sq. ft	Yes
6	Bedroom	9'5" x 10'0"	94 sq. ft	Yes
7	Kitchen	12'11" x 7'3"	135 sq. ft	Yes
8	Nook	11'3" x 11'1"	124 sq. ft	Yes
9	Bath	7'4" x 6'0"	41 sq. ft	Yes
10	Garage	23'7" x 20'10"	490 sq. ft	No
11	Dining Room	10'4" x 9'10"	102 sq. ft	Yes

**15130 S Greentree Dr,Oregon City,OR,US**

#		Dimensions	sqft	Counted as living area
12	Entry	4'9" x 8'2"	39 sq. ft	Yes
13	Hall	19'1" x 9'9"	119 sq. ft	Yes
14	Utility	6'4" x 5'1"	32 sq. ft	Yes

# 15130 S Greentree Dr, Oregon City, OR, US

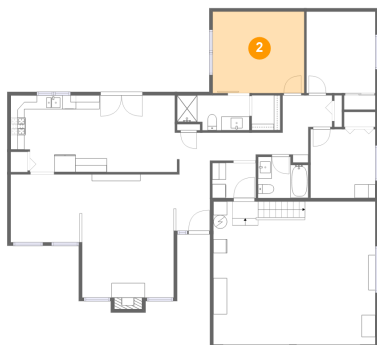
## 1 Floor 1 - Bedroom



**Dimensions:** 10'0" x 11'10"  
**Area:** 118 sq. ft  
**Counted as living area:** Yes

**Heated:** Yes  
**Finished:** Yes  
**Enclosed:** Yes  
**Contiguous:** Yes  
**Permitted:** Yes  
**Wet space:** No  
**Addition:** No  
**Conversion:** No

## 2 Floor 1 - Bedroom



**Dimensions:** 13'4" x 11'10"  
**Area:** 158 sq. ft  
**Counted as living area:** Yes

**Heated:** Yes  
**Finished:** Yes  
**Enclosed:** Yes  
**Contiguous:** Yes  
**Permitted:** Yes  
**Wet space:** No  
**Addition:** No  
**Conversion:** No

# 15130 S Greentree Dr, Oregon City, OR, US

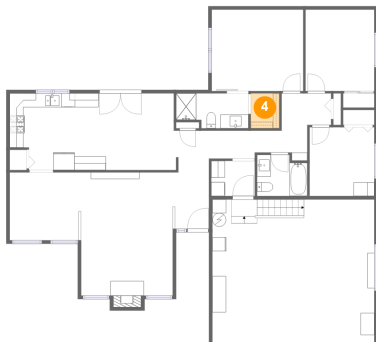
## 3 Floor 1 - Bath



Dimensions: 10'6" x 5'1"  
Area: 49 sq. ft  
Counted as living area: Yes

Heated: Yes  
Finished: Yes  
Enclosed: Yes  
Contiguous: Yes  
Permitted: Yes  
Wet space: Yes  
Addition: No  
Conversion: No

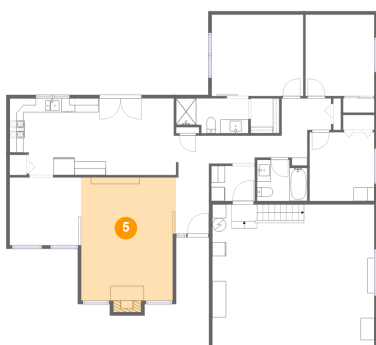
## 4 Floor 1 - Cl



Dimensions: 4'2" x 5'1"  
Area: 21 sq. ft  
Counted as living area: Yes

Heated: Yes  
Finished: Yes  
Enclosed: Yes  
Contiguous: Yes  
Permitted: Yes  
Wet space: No  
Addition: No  
Conversion: No

## 5 Floor 1 - Living Room



Dimensions: 13'10" x 17'11"  
Area: 250 sq. ft  
Counted as living area: Yes

Heated: Yes  
Finished: Yes  
Enclosed: Yes  
Contiguous: Yes  
Permitted: Yes  
Wet space: No  
Addition: No  
Conversion: No

# 15130 S Greentree Dr, Oregon City, OR, US

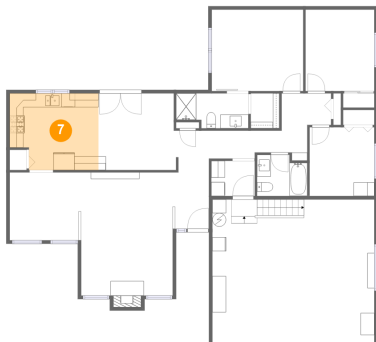
## 6 Floor 1 - Bedroom



Dimensions: 9'5" x 10'0"  
Area: 94 sq. ft  
Counted as living area: Yes

Heated: Yes  
Finished: Yes  
Enclosed: Yes  
Contiguous: Yes  
Permitted: Yes  
Wet space: No  
Addition: No  
Conversion: No

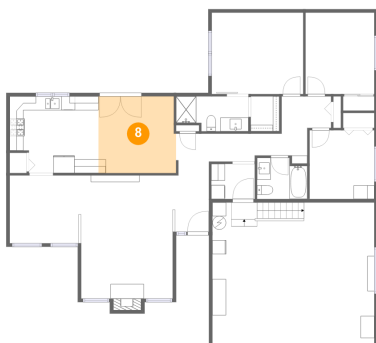
## 7 Floor 1 - Kitchen



Dimensions: 12'11" x 7'3"  
Area: 135 sq. ft  
Counted as living area: Yes

Heated: Yes  
Finished: Yes  
Enclosed: Yes  
Contiguous: Yes  
Permitted: Yes  
Wet space: No  
Addition: No  
Conversion: No

## 8 Floor 1 - Nook



Dimensions: 11'3" x 11'1"  
Area: 124 sq. ft  
Counted as living area: Yes

Heated: Yes  
Finished: Yes  
Enclosed: Yes  
Contiguous: Yes  
Permitted: Yes  
Wet space: No  
Addition: No  
Conversion: No

# 15130 S Greentree Dr, Oregon City, OR, US

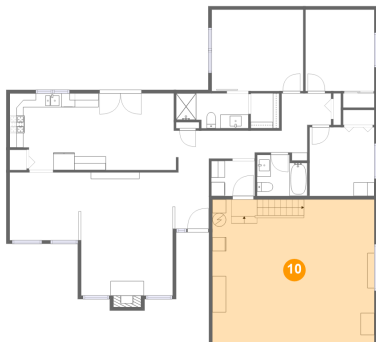
## 9 Floor 1 - Bath



Dimensions: 7'4" x 6'0"  
Area: 41 sq. ft  
Counted as living area: Yes

Heated: Yes  
Finished: Yes  
Enclosed: Yes  
Contiguous: Yes  
Permitted: Yes  
Wet space: Yes  
Addition: No  
Conversion: No

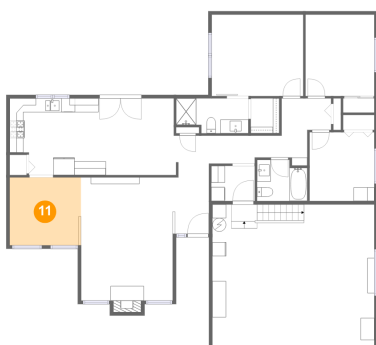
## 10 Floor 1 - Garage



Dimensions: 23'7" x 20'10"  
Area: 490 sq. ft  
Counted as living area: No

Heated: No  
Finished: No  
Enclosed: Yes  
Contiguous: Yes  
Permitted: Yes  
Wet space: No  
Addition: No  
Conversion: No

## 11 Floor 1 - Dining Room

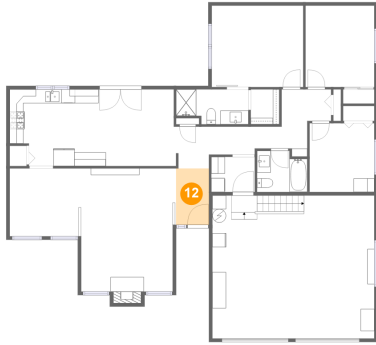


Dimensions: 10'4" x 9'10"  
Area: 102 sq. ft  
Counted as living area: Yes

Heated: Yes  
Finished: Yes  
Enclosed: Yes  
Contiguous: Yes  
Permitted: Yes  
Wet space: No  
Addition: No  
Conversion: No

# 15130 S Greentree Dr, Oregon City, OR, US

## 12 Floor 1 - Entry



Dimensions: 4'9" x 8'2"  
Area: 39 sq. ft  
Counted as living area: Yes

Heated: Yes  
Finished: Yes  
Enclosed: Yes  
Contiguous: Yes  
Permitted: Yes  
Wet space: No  
Addition: No  
Conversion: No

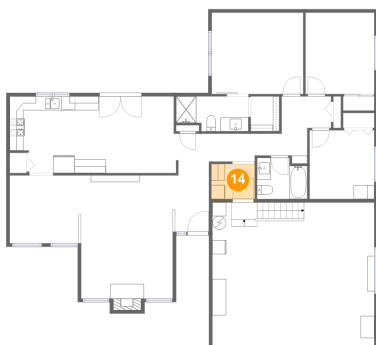
## 13 Floor 1 - Hall



Dimensions: 19'1" x 9'9"  
Area: 119 sq. ft  
Counted as living area: Yes

Heated: Yes  
Finished: Yes  
Enclosed: Yes  
Contiguous: Yes  
Permitted: Yes  
Wet space: No  
Addition: No  
Conversion: No

## 14 Floor 1 - Utility



Dimensions: 6'4" x 5'1"  
Area: 32 sq. ft  
Counted as living area: Yes

Heated: Yes  
Finished: Yes  
Enclosed: Yes  
Contiguous: Yes  
Permitted: Yes  
Wet space: No  
Addition: No  
Conversion: No