

Home report

2801 Casona Way, Forestville, Raleigh, Wake County, North Carolina, United States, 27616



Total GLA: 2305 sq. ft

Floor 1: 1141 sq. ft, Floor 2: 1164 sq. ft

Excluded: Porch 41 sq. ft, Patio 169 sq. ft, Garage 342 sq. ft, Open to below 70 sq. ft

Property summary



2 Floors



3 Bedrooms



2 Bathrooms

Home report

2801 Casona Way, Forestville, Raleigh, Wake County, North Carolina, United States, 27616



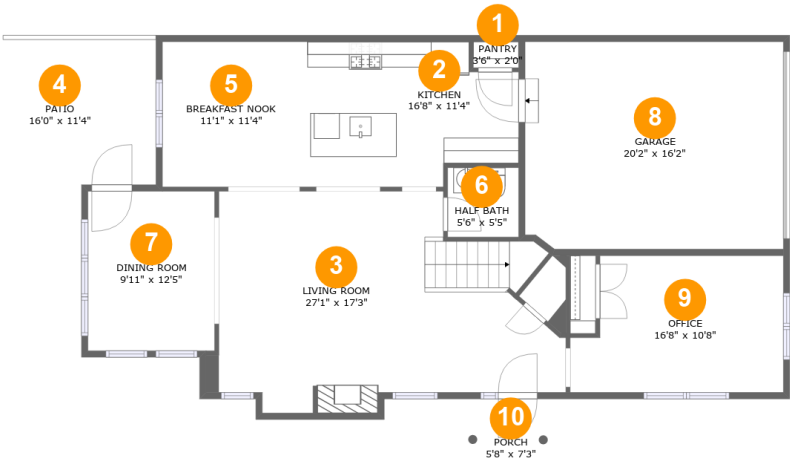
1
Half baths



1
Garages

Home report

2801 Casona Way, Forestville, Raleigh, Wake County, North Carolina, United States, 27616



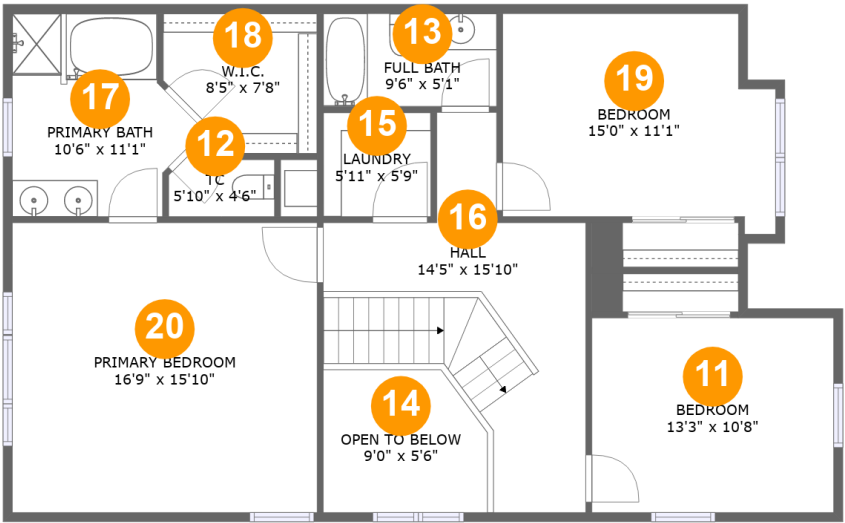
Room dimensions

Floor 1 Total:1141sqft Excluded: 552sqft

#		Max Dimensions	sqft	Included
1	Pantry	3'6" x 2'0"	7 sq. ft	Yes
2	Kitchen	16'8" x 11'4"	169 sq. ft	Yes
3	Living Room	27'1" x 17'3"	385 sq. ft	Yes
4	Patio	16'0" x 11'4"	169 sq. ft	No
5	Breakfast Nook	11'1" x 11'4"	125 sq. ft	Yes
6	Half Bath	5'6" x 5'5"	30 sq. ft	Yes
7	Dining Room	9'11" x 12'5"	123 sq. ft	Yes
8	Garage	20'2" x 16'2"	324 sq. ft	No
9	Office	16'8" x 10'8"	162 sq. ft	Yes
10	Porch	5'8" x 7'3"	41 sq. ft	No

Home report

2801 Casona Way, Forestville, Raleigh, Wake County, North Carolina, United States, 27616



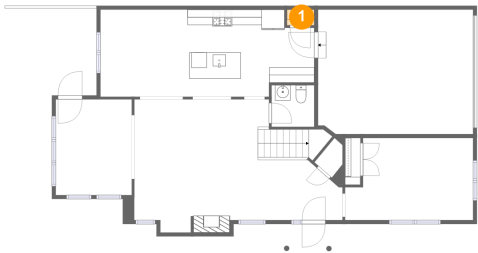
Room dimensions

Floor 2 Total:1164sqft Excluded: 70sqft

#		Max Dimensions	sqft	Included
11	Bedroom	13'3" x 10'8"	141 sq. ft	Yes
12	Tc	5'10" x 4'6"	20 sq. ft	Yes
13	Full Bath	9'6" x 5'1"	48 sq. ft	Yes
14	Open To Below	9'0" x 5'6"	66 sq. ft	No
15	Laundry	5'11" x 5'9"	34 sq. ft	Yes
16	Hall	14'5" x 15'10"	182 sq. ft	Yes
17	Primary Bath	10'6" x 11'1"	96 sq. ft	Yes
18	W.I.C.	8'5" x 7'8"	57 sq. ft	Yes
19	Bedroom	15'0" x 11'1"	160 sq. ft	Yes
20	Primary Bedroom	16'9" x 15'10"	265 sq. ft	Yes

2801 Casona Way, Forestville, Raleigh, Wake County, North Carolina, United States, 27616

1 Floor 1 - Pantry



Max Dimensions: 3'6" x 2'0"
Calculated Area: 7 sq. ft
Included: Yes

Heated: Yes
Finished: Yes
Enclosed: Yes
Contiguous: Yes
Permitted: Yes
Wet space: No
Addition: No
Conversion: No

2 Floor 1 - Kitchen



Max Dimensions: 16'8" x 11'4"
Calculated Area: 169 sq. ft
Included: Yes

Heated: Yes
Finished: Yes
Enclosed: Yes
Contiguous: Yes
Permitted: Yes
Wet space: No
Addition: No
Conversion: No

2801 Casona Way, Forestville, Raleigh, Wake County, North Carolina, United States, 27616

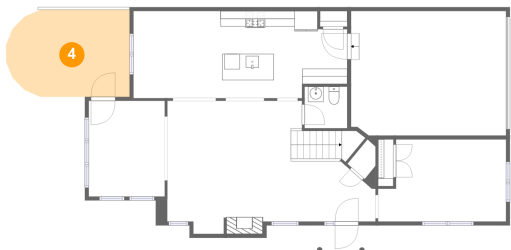
3 Floor 1 - Living Room



Max Dimensions: 27'1" x 17'3"
Calculated Area: 385 sq. ft
Included: Yes

Heated: Yes
Finished: Yes
Enclosed: Yes
Contiguous: Yes
Permitted: Yes
Wet space: No
Addition: No
Conversion: No

4 Floor 1 - Patio



Max Dimensions: 16'0" x 11'4"
Calculated Area: 169 sq. ft
Included: No

Heated: No
Finished: Yes
Enclosed: No
Contiguous: Yes
Permitted: Yes
Wet space: No
Addition: No
Conversion: No

5 Floor 1 - Breakfast Nook



Max Dimensions: 11'1" x 11'4"
Calculated Area: 125 sq. ft
Included: Yes

Heated: Yes
Finished: Yes
Enclosed: Yes
Contiguous: Yes
Permitted: Yes
Wet space: No
Addition: No
Conversion: No

2801 Casona Way, Forestville, Raleigh, Wake County, North Carolina, United States, 27616

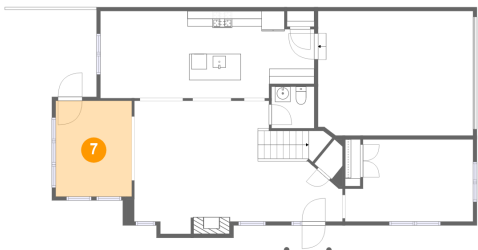
6 Floor 1 - Half Bath



Max Dimensions: 5'6" x 5'5"
Calculated Area: 30 sq. ft
Included: Yes

Heated: Yes
Finished: Yes
Enclosed: Yes
Contiguous: Yes
Permitted: Yes
Wet space: Yes
Addition: No
Conversion: No

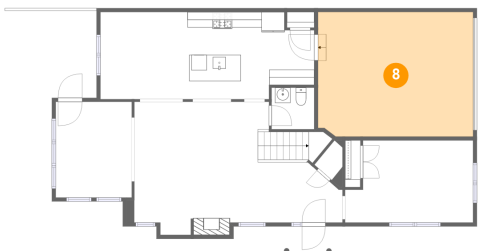
7 Floor 1 - Dining Room



Max Dimensions: 9'11" x 12'5"
Calculated Area: 123 sq. ft
Included: Yes

Heated: Yes
Finished: Yes
Enclosed: Yes
Contiguous: Yes
Permitted: Yes
Wet space: No
Addition: No
Conversion: No

8 Floor 1 - Garage



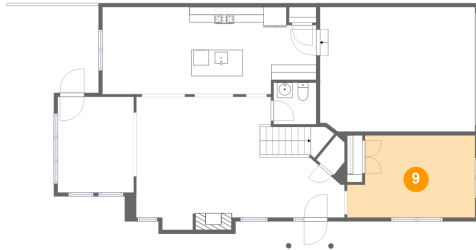
Max Dimensions: 20'2" x 16'2"
Calculated Area: 324 sq. ft
Included: No

Heated: No
Finished: Yes
Enclosed: Yes
Contiguous: Yes
Permitted: Yes
Wet space: No
Addition: No
Conversion: No

Home report

2801 Casona Way, Forestville, Raleigh, Wake County, North Carolina, United States, 27616

9 Floor 1 - Office



Max Dimensions: 16'8" x 10'8"
Calculated Area: 162 sq. ft
Included: Yes

Heated: Yes
Finished: Yes
Enclosed: Yes
Contiguous: Yes
Permitted: Yes
Wet space: No
Addition: No
Conversion: No

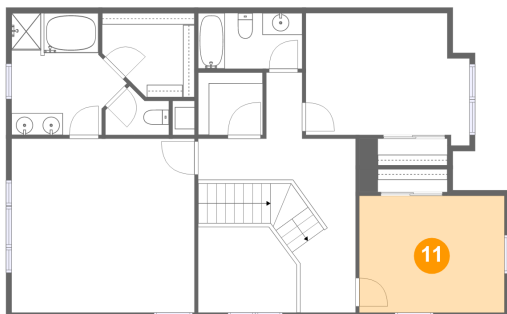
10 Floor 1 - Porch



Max Dimensions: 5'8" x 7'3"
Calculated Area: 41 sq. ft
Included: No

Heated: No
Finished: Yes
Enclosed: No
Contiguous: Yes
Permitted: Yes
Wet space: No
Addition: No
Conversion: No

11 Floor 2 - Bedroom

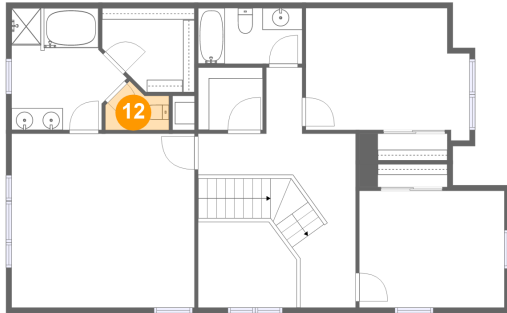


Max Dimensions: 13'3" x 10'8"
Calculated Area: 141 sq. ft
Included: Yes

Heated: Yes
Finished: Yes
Enclosed: Yes
Contiguous: Yes
Permitted: Yes
Wet space: No
Addition: No
Conversion: No

2801 Casona Way, Forestville, Raleigh, Wake County, North Carolina, United States, 27616

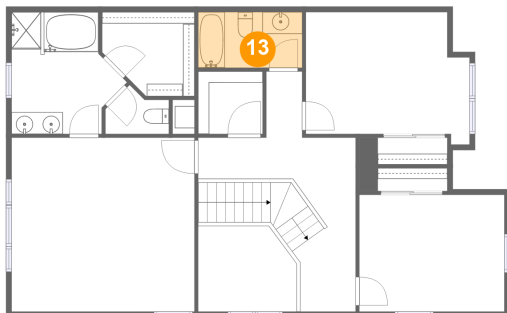
12 Floor 2 - Tc



Max Dimensions: 5'10" x 4'6"
Calculated Area: 20 sq. ft
Included: Yes

Heated: Yes
Finished: Yes
Enclosed: Yes
Contiguous: Yes
Permitted: Yes
Wet space: Yes
Addition: No
Conversion: No

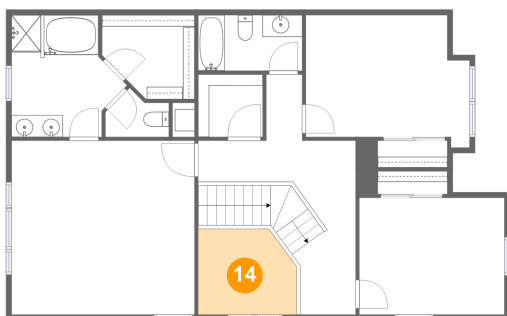
13 Floor 2 - Full Bath



Max Dimensions: 9'6" x 5'1"
Calculated Area: 48 sq. ft
Included: Yes

Heated: Yes
Finished: Yes
Enclosed: Yes
Contiguous: Yes
Permitted: Yes
Wet space: Yes
Addition: No
Conversion: No

14 Floor 2 - Open To Below

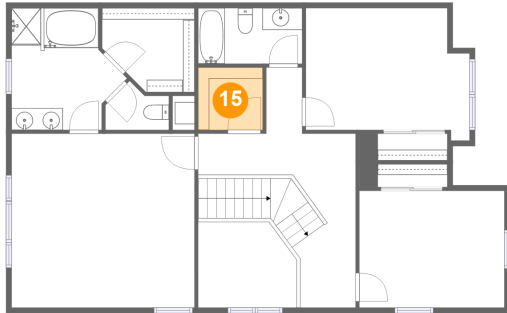


Max Dimensions: 9'0" x 5'6"
Calculated Area: 66 sq. ft
Included: No

Heated: No
Finished: Yes
Enclosed: No
Contiguous: Yes
Permitted: No
Wet space: No
Addition: No
Conversion: No

2801 Casona Way, Forestville, Raleigh, Wake County, North Carolina, United States, 27616

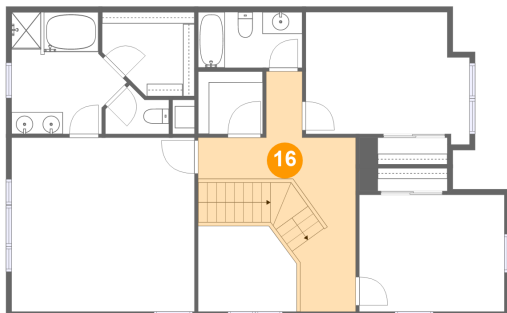
15 Floor 2 - Laundry



Max Dimensions: 5'11" x 5'9"
Calculated Area: 34 sq. ft
Included: Yes

Heated: Yes
Finished: Yes
Enclosed: Yes
Contiguous: Yes
Permitted: Yes
Wet space: No
Addition: No
Conversion: No

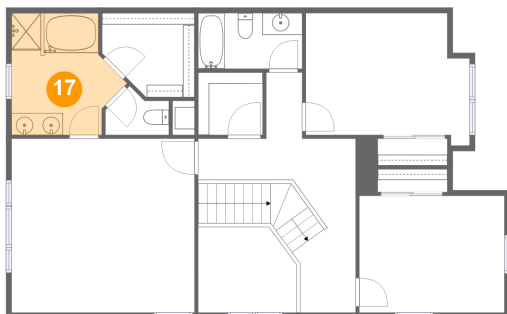
16 Floor 2 - Hall



Max Dimensions: 14'5" x 15'10"
Calculated Area: 182 sq. ft
Included: Yes

Heated: Yes
Finished: Yes
Enclosed: Yes
Contiguous: Yes
Permitted: Yes
Wet space: No
Addition: No
Conversion: No

17 Floor 2 - Primary Bath

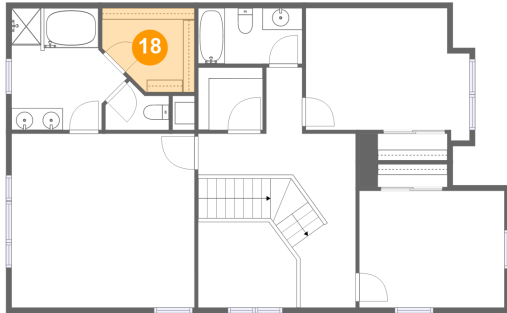


Max Dimensions: 10'6" x 11'1"
Calculated Area: 96 sq. ft
Included: Yes

Heated: Yes
Finished: Yes
Enclosed: Yes
Contiguous: Yes
Permitted: Yes
Wet space: Yes
Addition: No
Conversion: No

2801 Casona Way, Forestville, Raleigh, Wake County, North Carolina, United States, 27616

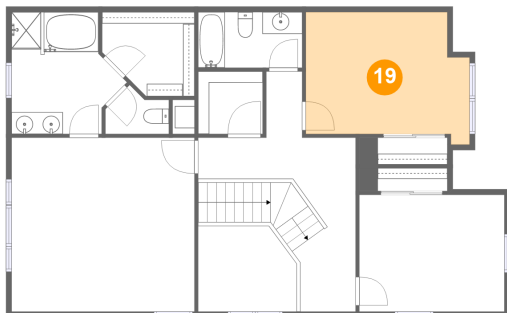
18 Floor 2 - W.I.C.



Max Dimensions: 8'5" x 7'8"
Calculated Area: 57 sq. ft
Included: Yes

Heated: Yes
Finished: Yes
Enclosed: Yes
Contiguous: Yes
Permitted: Yes
Wet space: No
Addition: No
Conversion: No

19 Floor 2 - Bedroom



Max Dimensions: 15'0" x 11'1"
Calculated Area: 160 sq. ft
Included: Yes

Heated: Yes
Finished: Yes
Enclosed: Yes
Contiguous: Yes
Permitted: Yes
Wet space: No
Addition: No
Conversion: No

20 Floor 2 - Primary Bedroom



Max Dimensions: 16'9" x 15'10"
Calculated Area: 265 sq. ft
Included: Yes

Heated: Yes
Finished: Yes
Enclosed: Yes
Contiguous: Yes
Permitted: Yes
Wet space: No
Addition: No
Conversion: No