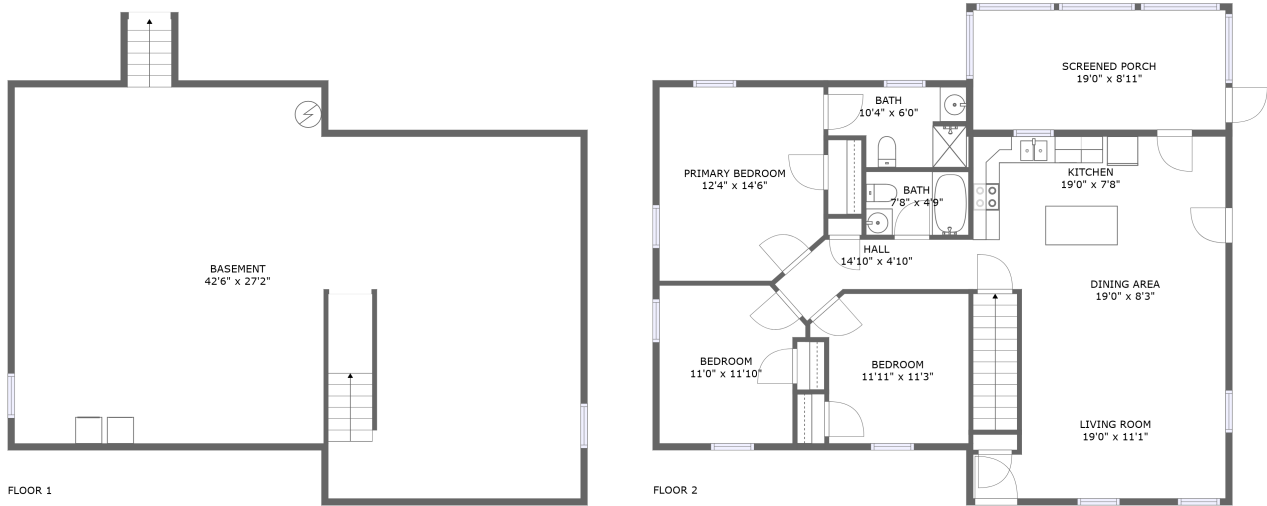


219 Main St., Springvale, ME, US



Property summary

 **0**
Garages


 **3**
Bedrooms

 **2**
Bathrooms

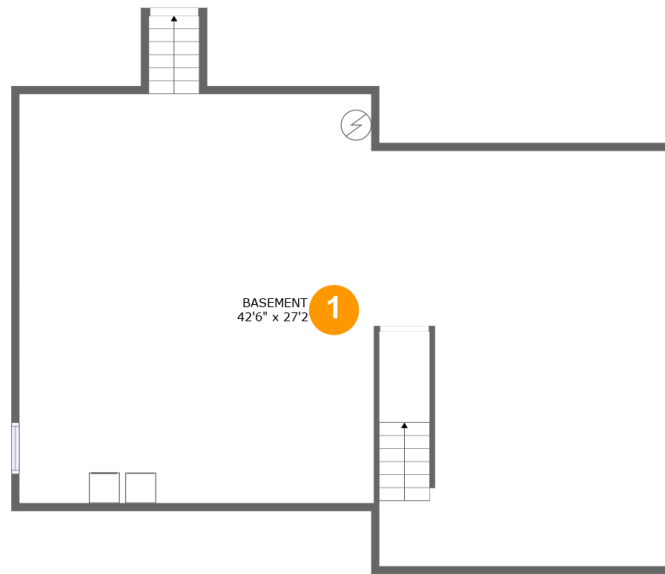
 **0**
Half baths

 **2**
Floors

 **1,219**
Gross living
area sqft

 **2,648**
Total sqft

219 Main St., Springvale, ME, US



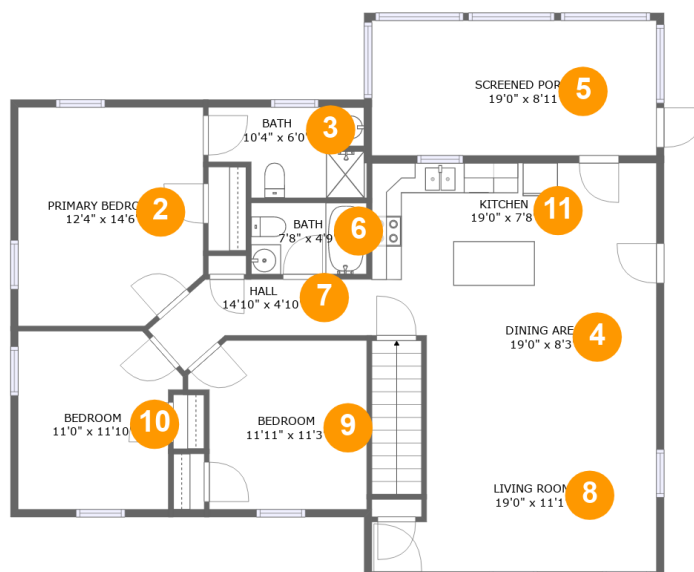
Room dimensions

Floor 1

Total sqft: 1241

Living area: 0

#		Dimensions	sqft	Counted as living area
1	Basement	42'6" x 27'2"	1161 sq. ft	No

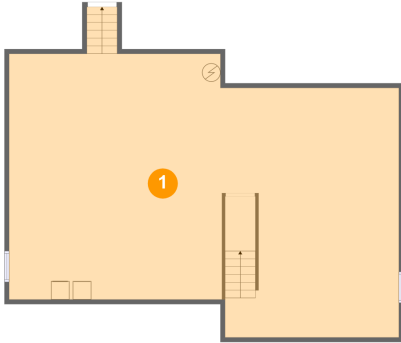
219 Main St., Springvale, ME, US**Room dimensions**

Floor 2

Total sqft: 1407 Living area: 1219

#		Dimensions	sqft	Counted as living area
2	Bedroom	12'4" x 14'6"	173 sq. ft	Yes
3	Bath	10'4" x 6'0"	55 sq. ft	Yes
4	Dining Room	19'0" x 8'3"	141 sq. ft	Yes
5	Outdoor	19'0" x 8'11"	170 sq. ft	No
6	Bath	7'8" x 4'9"	37 sq. ft	Yes
7	Hall	14'10" x 4'10"	55 sq. ft	Yes
8	Living Room	19'0" x 11'1"	183 sq. ft	Yes
9	Bedroom	11'11" x 11'3"	120 sq. ft	Yes
10	Bedroom	11'0" x 11'10"	118 sq. ft	Yes
11	Kitchen	19'0" x 7'8"	147 sq. ft	Yes

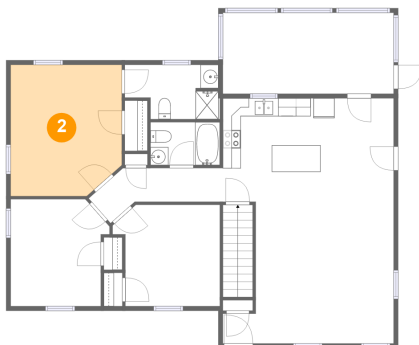
1 Floor 1 - Basement



Dimensions: 42'6" x 27'2"
Area: 1161 sq. ft
Counted as living area: No

Heated: Yes
Finished: No
Enclosed: Yes
Contiguous: Yes
Permitted: Yes
Wet space: No
Addition: No
Conversion: No

2 Floor 2 - Bedroom



Dimensions: 12'4" x 14'6"
Area: 173 sq. ft
Counted as living area: Yes

Heated: Yes
Finished: Yes
Enclosed: Yes
Contiguous: Yes
Permitted: Yes
Wet space: No
Addition: No
Conversion: No

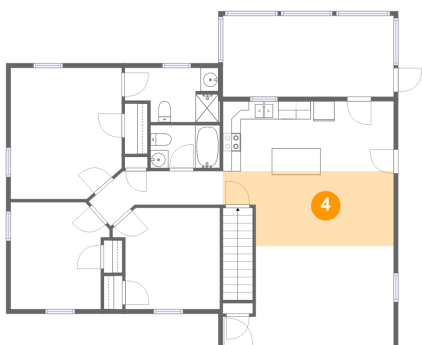
3 Floor 2 - Bath



Dimensions: 10'4" x 6'0"
Area: 55 sq. ft
Counted as living area: Yes

Heated: Yes
Finished: Yes
Enclosed: Yes
Contiguous: Yes
Permitted: Yes
Wet space: Yes
Addition: No
Conversion: No

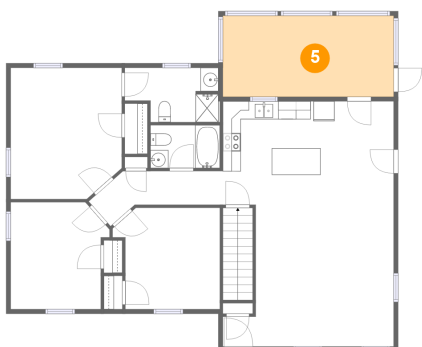
4 Floor 2 - Dining Room



Dimensions: 19'0" x 8'3"
Area: 141 sq. ft
Counted as living area: Yes

Heated: Yes
Finished: Yes
Enclosed: Yes
Contiguous: Yes
Permitted: Yes
Wet space: No
Addition: No
Conversion: No

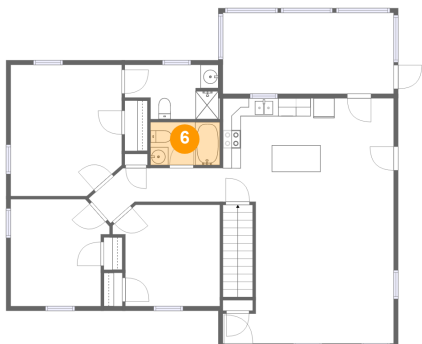
5 Floor 2 - Outdoor



Dimensions: 19'0" x 8'11"
Area: 170 sq. ft
Counted as living area: No

Heated: No
Finished: Yes
Enclosed: No
Contiguous: Yes
Permitted: Yes
Wet space: No
Addition: No
Conversion: No

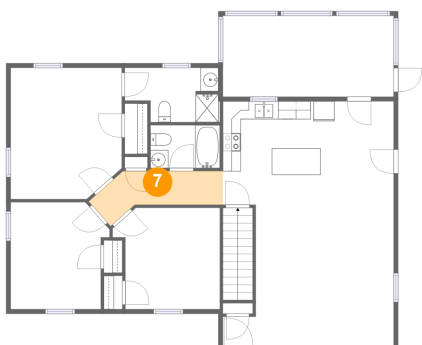
6 Floor 2 - Bath



Dimensions: 7'8" x 4'9"
Area: 37 sq. ft
Counted as living area: Yes

Heated: Yes
Finished: Yes
Enclosed: Yes
Contiguous: Yes
Permitted: Yes
Wet space: Yes
Addition: No
Conversion: No

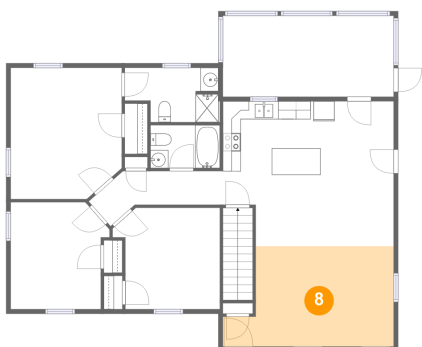
7 Floor 2 - Hall



Dimensions: 14'10" x 4'10"
Area: 55 sq. ft
Counted as living area: Yes

Heated: Yes
Finished: Yes
Enclosed: Yes
Contiguous: Yes
Permitted: Yes
Wet space: No
Addition: No
Conversion: No

8 Floor 2 - Living Room

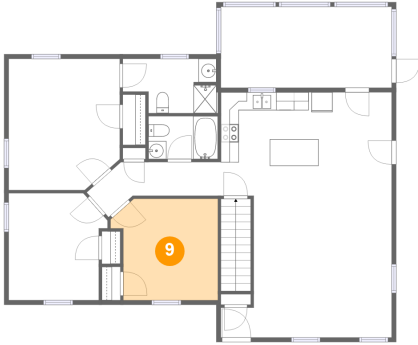


Dimensions: 19'0" x 11'1"
Area: 183 sq. ft
Counted as living area: Yes

Heated: Yes
Finished: Yes
Enclosed: Yes
Contiguous: Yes
Permitted: Yes
Wet space: No
Addition: No
Conversion: No

219 Main St., Springvale, ME, US

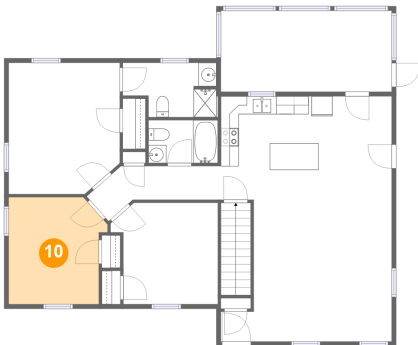
9 Floor 2 - Bedroom



Dimensions: 11'11" x 11'3"
Area: 120 sq. ft
Counted as living area: Yes

Heated: Yes
Finished: Yes
Enclosed: Yes
Contiguous: Yes
Permitted: Yes
Wet space: No
Addition: No
Conversion: No

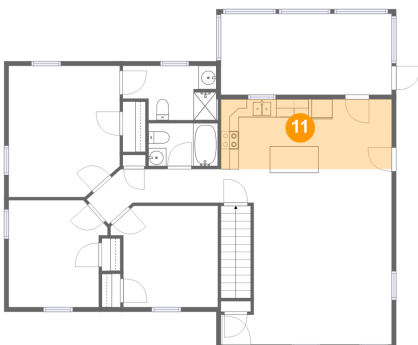
10 Floor 2 - Bedroom



Dimensions: 11'0" x 11'10"
Area: 118 sq. ft
Counted as living area: Yes

Heated: Yes
Finished: Yes
Enclosed: Yes
Contiguous: Yes
Permitted: Yes
Wet space: No
Addition: No
Conversion: No

11 Floor 2 - Kitchen



Dimensions: 19'0" x 7'8"
Area: 147 sq. ft
Counted as living area: Yes

Heated: Yes
Finished: Yes
Enclosed: Yes
Contiguous: Yes
Permitted: Yes
Wet space: No
Addition: No
Conversion: No