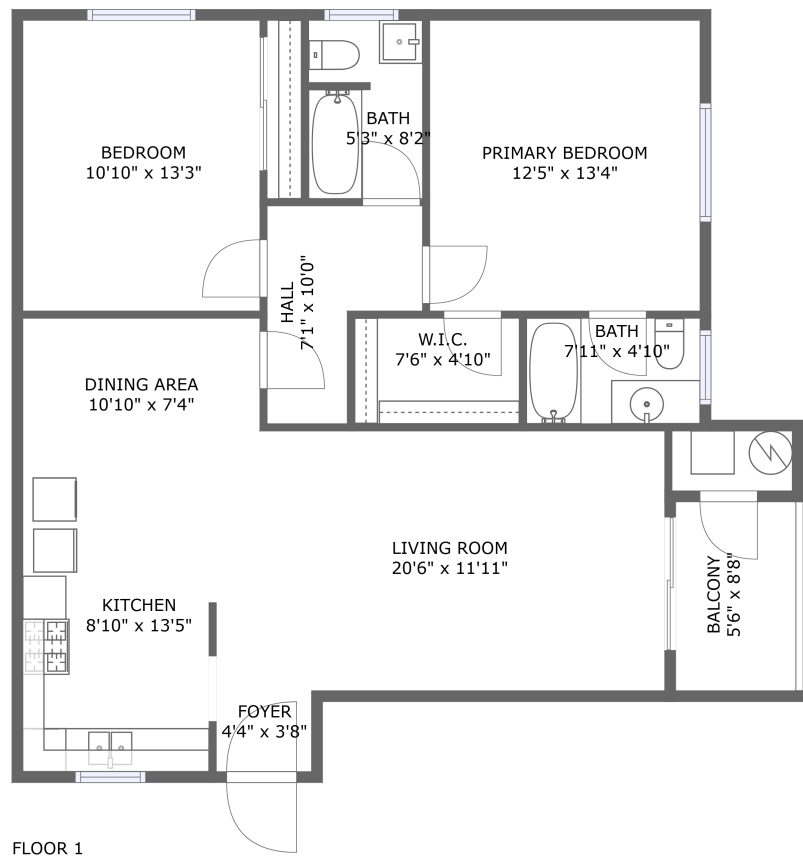





1635 West Blvd,#4,Los Angeles,CA,US, #4




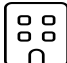
Property summary


**0** Garages


**2** Bedrooms

**2** Bathrooms

**0** Half baths

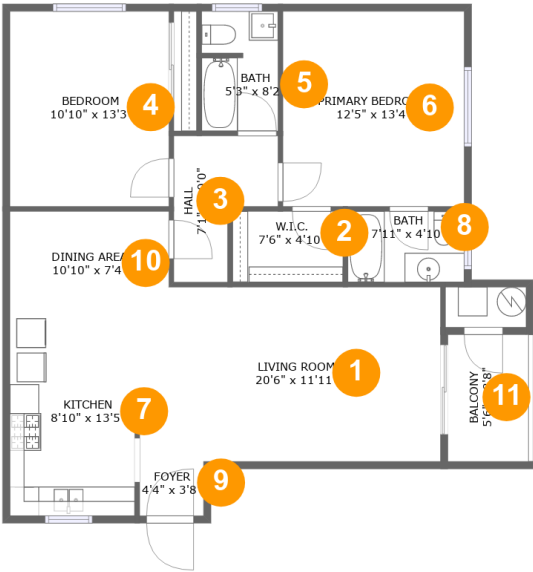
**1** Floors

**983** Gross living area sqft

**1,046** Total sqft

Home report

1635 West Blvd,#4,Los Angeles,CA,US, #4

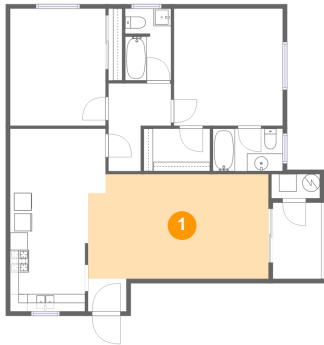


Room dimensions

Floor 1 Total sqft: 1046 Living area: 983

#		Dimensions	sqft	Counted as living area
1	Living Room	20'6" x 11'11"	240 sq. ft	Yes
2	W.I.C.	7'6" x 4'10"	36 sq. ft	Yes
3	Hall	7'1" x 10'0"	53 sq. ft	Yes
4	Bedroom	10'10" x 13'3"	145 sq. ft	Yes
5	Bath	5'3" x 8'2"	42 sq. ft	Yes
6	Primary Bedroom	12'5" x 13'4"	165 sq. ft	Yes
7	Kitchen	8'10" x 13'5"	117 sq. ft	Yes
8	Bath	7'11" x 4'10"	38 sq. ft	Yes
9	Foyer	4'4" x 3'8"	16 sq. ft	Yes
10	Dining Area	10'10" x 7'4"	79 sq. ft	Yes
11	Balcony	5'6" x 8'8"	48 sq. ft	No

1 Floor 1 - Living Room



Dimensions: 20'6" x 11'11"
Area: 240 sq. ft
Counted as living area: Yes

Heated: Yes
Finished: Yes
Enclosed: Yes
Contiguous: Yes
Permitted: Yes
Wet space: No
Addition: No
Conversion: No

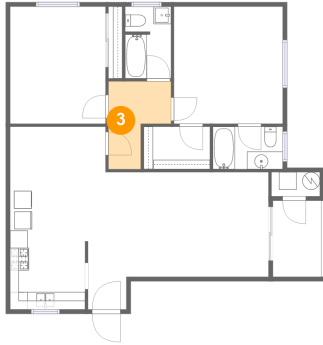
2 Floor 1 - W.I.C.



Dimensions: 7'6" x 4'10"
Area: 36 sq. ft
Counted as living area: Yes

Heated: Yes
Finished: Yes
Enclosed: Yes
Contiguous: Yes
Permitted: Yes
Wet space: No
Addition: No
Conversion: No

3 Floor 1 - Hall



Dimensions: 7'1" x 10'0"
Area: 53 sq. ft
Counted as living area: Yes

Heated: Yes
Finished: Yes
Enclosed: Yes
Contiguous: Yes
Permitted: Yes
Wet space: No
Addition: No
Conversion: No

4 Floor 1 - Bedroom



Dimensions: 10'10" x 13'3"
Area: 145 sq. ft
Counted as living area: Yes

Heated: Yes
Finished: Yes
Enclosed: Yes
Contiguous: Yes
Permitted: Yes
Wet space: No
Addition: No
Conversion: No

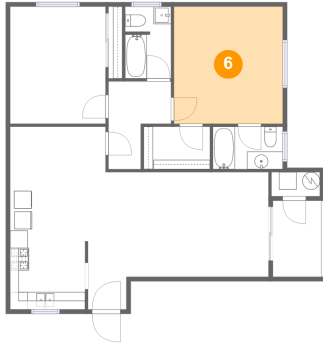
5 Floor 1 - Bath



Dimensions: 5'3" x 8'2"
Area: 42 sq. ft
Counted as living area: Yes

Heated: Yes
Finished: Yes
Enclosed: Yes
Contiguous: Yes
Permitted: Yes
Wet space: Yes
Addition: No
Conversion: No

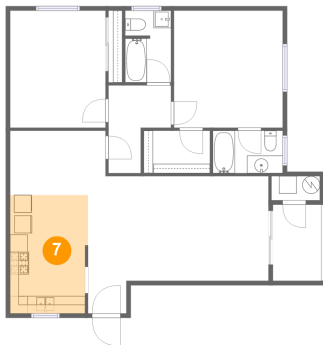
6 Floor 1 - Primary Bedroom



Dimensions: 12'5" x 13'4"
Area: 165 sq. ft
Counted as living area: Yes

Heated: Yes
Finished: Yes
Enclosed: Yes
Contiguous: Yes
Permitted: Yes
Wet space: No
Addition: No
Conversion: No

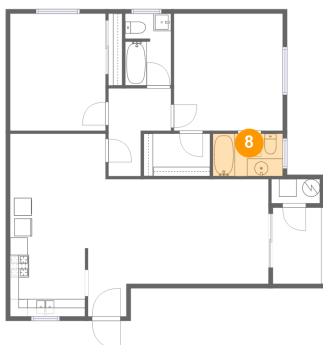
7 Floor 1 - Kitchen



Dimensions: 8'10" x 13'5"
Area: 117 sq. ft
Counted as living area: Yes

Heated: Yes
Finished: Yes
Enclosed: Yes
Contiguous: Yes
Permitted: Yes
Wet space: No
Addition: No
Conversion: No

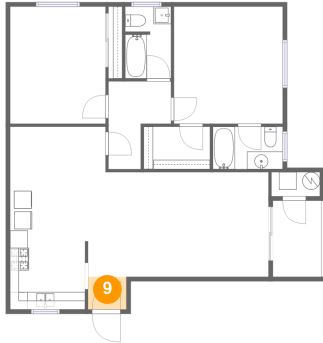
8 Floor 1 - Bath



Dimensions: 7'11" x 4'10"
Area: 38 sq. ft
Counted as living area: Yes

Heated: Yes
Finished: Yes
Enclosed: Yes
Contiguous: Yes
Permitted: Yes
Wet space: Yes
Addition: No
Conversion: No

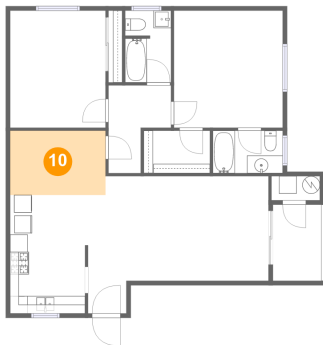
9 Floor 1 - Foyer



Dimensions: 4'4" x 3'8"
Area: 16 sq. ft
Counted as living area: Yes

Heated: Yes
Finished: Yes
Enclosed: Yes
Contiguous: Yes
Permitted: Yes
Wet space: No
Addition: No
Conversion: No

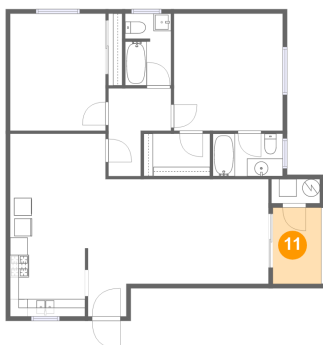
10 Floor 1 - Dining Area



Dimensions: 10'10" x 7'4"
Area: 79 sq. ft
Counted as living area: Yes

Heated: Yes
Finished: Yes
Enclosed: Yes
Contiguous: Yes
Permitted: Yes
Wet space: No
Addition: No
Conversion: No

11 Floor 1 - Balcony



Dimensions: 5'6" x 8'8"
Area: 48 sq. ft
Counted as living area: No

Heated: No
Finished: Yes
Enclosed: No
Contiguous: Yes
Permitted: Yes
Wet space: No
Addition: No
Conversion: No