

# 63 Padbury Trail, Northwest Brampton, Brampton, Peel County, Ontario, Canada, L7A



## Property Summary



**4** floors



**3** bedrooms



**2** bathrooms



**2,598** total sqft

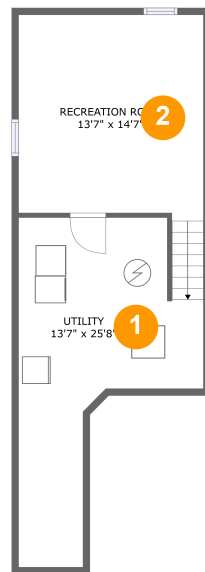


**1** garages



**2,343** Gross Living Area sqft

# 63 Padbury Trail, Northwest Brampton, Brampton, Peel County, Ontario, Canada, L7A



## Room Dimensions

Floor 1

Total sqft: 484

Living area: 484

#	Room name	Dimensions	Area (sqft)	Counted as Living Area
1	Utility	13'7" x 25'8"	220 sq. ft	Yes
2	Recreation Room	13'7" x 14'7"	210 sq. ft	Yes

# 63 Padbury Trail, Northwest Brampton, Brampton, Peel County, Ontario, Canada, L7A



## Room Dimensions

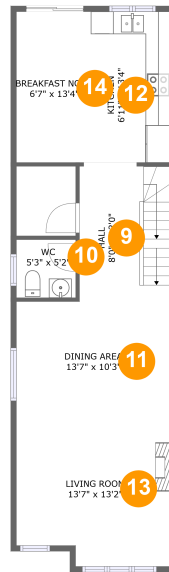
Floor 2

Total sqft: 697

Living area: 442

#	Room name	Dimensions	Area (sqft)	Counted as Living Area
3	Hall	8'1" x 11'9"	91 sq. ft	Yes
4	Foyer	5'7" x 17'5"	87 sq. ft	Yes
5	Porch	5'2" x 4'6"	24 sq. ft	No
6	Garage	8'4" x 21'2"	176 sq. ft	No
7	Family Room	13'7" x 15'8"	213 sq. ft	Yes
8	Wc	5'7" x 4'11"	28 sq. ft	No

# 63 Padbury Trail, Northwest Brampton, Brampton, Peel County, Ontario, Canada, L7A



## Room Dimensions

Floor 3

Total sqft: 708

Living area: 708

#	Room name	Dimensions	Area (sqft)	Counted as Living Area
9	Hall	8'0" x 12'0"	96 sq. ft	Yes
10	Wc	5'3" x 5'2"	27 sq. ft	Yes
11	Dining Area	13'7" x 10'3"	139 sq. ft	Yes
12	Kitchen	6'11" x 13'4"	93 sq. ft	Yes
13	Living Room	13'7" x 13'2"	169 sq. ft	Yes
14	Breakfast Nook	6'7" x 13'4"	88 sq. ft	Yes

# 63 Padbury Trail, Northwest Brampton, Brampton, Peel County, Ontario, Canada, L7A



## Room Dimensions

Floor 4

Total sqft: 709

Living area: 709

#	Room name	Dimensions	Area (sqft)	Counted as Living Area
15	Bath	5'0" x 7'7"	38 sq. ft	Yes
16	Hall	8'3" x 19'11"	127 sq. ft	Yes
17	Bath	5'0" x 7'10"	39 sq. ft	Yes
18	Bedroom	10'3" x 8'7"	84 sq. ft	Yes
19	Bedroom	13'7" x 13'1"	137 sq. ft	Yes
20	Primary Bedroom	13'7" x 10'9"	146 sq. ft	Yes
21	W.i.c.	4'6" x 4'4"	20 sq. ft	Yes

# 63 Padbury Trail, Northwest Brampton, Brampton, Peel County, Ontario, Canada, L7A

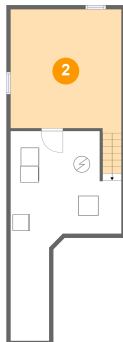
## 1 Floor 1 - Utility



Dimensions: 13'7" x 25'8"  
Area: 220 sq. ft  
Counted as Living Area:  
Yes

Heated: Yes  
Finished: Yes  
Enclosed: Yes  
Contiguous:  
Yes  
Permitted: Yes  
Wet Space: No  
Addition: No  
Conversion: No

## 2 Floor 1 - Recreation Room



Dimensions: 13'7" x 14'7"  
Area: 210 sq. ft  
Counted as Living Area:  
Yes

Heated: Yes  
Finished: Yes  
Enclosed: Yes  
Contiguous:  
Yes  
Permitted: Yes  
Wet Space: No  
Addition: No  
Conversion: No

# 63 Padbury Trail, Northwest Brampton, Brampton, Peel County, Ontario, Canada, L7A

## 3 Floor 2 - Hall



Dimensions: 8'1" x 11'9"  
Area: 91 sq. ft  
Counted as Living Area:  
Yes

Heated: Yes  
Finished: Yes  
Enclosed: Yes  
Contiguous:  
Yes  
Permitted: Yes  
Wet Space: No  
Addition: No  
Conversion: No

## 4 Floor 2 - Foyer



Dimensions: 5'7" x 17'5"  
Area: 87 sq. ft  
Counted as Living Area:  
Yes

Heated: Yes  
Finished: Yes  
Enclosed: Yes  
Contiguous:  
Yes  
Permitted: Yes  
Wet Space: No  
Addition: No  
Conversion: No

## 5 Floor 2 - Porch



Dimensions: 5'2" x 4'6"  
Area: 24 sq. ft  
Counted as Living Area: No

Heated: No  
Finished: Yes  
Enclosed: No  
Contiguous: Yes  
Permitted: Yes  
Wet Space: No  
Addition: No  
Conversion: No

# 63 Padbury Trail, Northwest Brampton, Brampton, Peel County, Ontario, Canada, L7A

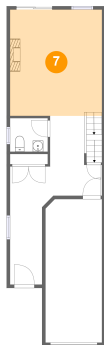
## 6 Floor 2 - Garage



Dimensions: 8'4" x 21'2"  
Area: 176 sq. ft  
Counted as Living Area: No

Heated: No  
Finished: No  
Enclosed: Yes  
Contiguous: Yes  
Permitted: Yes  
Wet Space: No  
Addition: No  
Conversion: No

## 7 Floor 2 - Family Room



Dimensions: 13'7" x 15'8"  
Area: 213 sq. ft  
Counted as Living Area:  
Yes

Heated: Yes  
Finished: Yes  
Enclosed: Yes  
Contiguous:  
Yes  
Permitted: Yes  
Wet Space: No  
Addition: No  
Conversion: No

## 8 Floor 2 - Wc



Dimensions: 5'7" x 4'11"  
Area: 28 sq. ft  
Counted as Living Area: No

Heated: Yes  
Finished: Yes  
Enclosed: Yes  
Contiguous: Yes  
Permitted: Yes  
Wet Space: Yes  
Addition: No  
Conversion: No



# 63 Padbury Trail, Northwest Brampton, Brampton, Peel County, Ontario, Canada, L7A

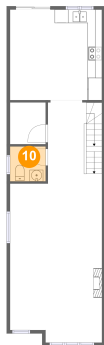
## 9 Floor 3 - Hall



Dimensions: 8'0" x 12'0"  
Area: 96 sq. ft  
Counted as Living Area:  
Yes

Heated: Yes  
Finished: Yes  
Enclosed: Yes  
Contiguous:  
Yes  
Permitted: Yes  
Wet Space: No  
Addition: No  
Conversion: No

## 10 Floor 3 - Wc



Dimensions: 5'3" x 5'2"  
Area: 27 sq. ft  
Counted as Living Area:  
Yes

Heated: Yes  
Finished: Yes  
Enclosed: Yes  
Contiguous:  
Yes  
Permitted: Yes  
Wet Space: Yes  
Addition: No  
Conversion: No

## 11 Floor 3 - Dining Area



Dimensions: 13'7" x 10'3"  
Area: 139 sq. ft  
Counted as Living Area:  
Yes

Heated: Yes  
Finished: Yes  
Enclosed: Yes  
Contiguous:  
Yes  
Permitted: Yes  
Wet Space: No  
Addition: No  
Conversion: No

# 63 Padbury Trail, Northwest Brampton, Brampton, Peel County, Ontario, Canada, L7A

## 12 Floor 3 - Kitchen



Dimensions: 6'11" x 13'4"  
Area: 93 sq. ft  
Counted as Living Area:  
Yes

Heated: Yes  
Finished: Yes  
Enclosed: Yes  
Contiguous:  
Yes  
Permitted: Yes  
Wet Space: No  
Addition: No  
Conversion: No

## 13 Floor 3 - Living Room



Dimensions: 13'7" x 13'2"  
Area: 169 sq. ft  
Counted as Living Area:  
Yes

Heated: Yes  
Finished: Yes  
Enclosed: Yes  
Contiguous:  
Yes  
Permitted: Yes  
Wet Space: No  
Addition: No  
Conversion: No

## 14 Floor 3 - Breakfast Nook



Dimensions: 6'7" x 13'4"  
Area: 88 sq. ft  
Counted as Living Area:  
Yes

Heated: Yes  
Finished: Yes  
Enclosed: Yes  
Contiguous:  
Yes  
Permitted: Yes  
Wet Space: No  
Addition: No  
Conversion: No

# 63 Padbury Trail, Northwest Brampton, Brampton, Peel County, Ontario, Canada, L7A

## 15 Floor 4 - Bath



Dimensions: 5'0" x 7'7"  
Area: 38 sq. ft  
Counted as Living Area:  
Yes

Heated: Yes  
Finished: Yes  
Enclosed: Yes  
Contiguous:  
Yes  
Permitted: Yes  
Wet Space: Yes  
Addition: No  
Conversion: No

## 16 Floor 4 - Hall



Dimensions: 8'3" x 19'11"  
Area: 127 sq. ft  
Counted as Living Area:  
Yes

Heated: Yes  
Finished: Yes  
Enclosed: Yes  
Contiguous:  
Yes  
Permitted: Yes  
Wet Space: No  
Addition: No  
Conversion: No

## 17 Floor 4 - Bath



Dimensions: 5'0" x 7'10"  
Area: 39 sq. ft  
Counted as Living Area:  
Yes

Heated: Yes  
Finished: Yes  
Enclosed: Yes  
Contiguous:  
Yes  
Permitted: Yes  
Wet Space: Yes  
Addition: No  
Conversion: No

# 63 Padbury Trail, Northwest Brampton, Brampton, Peel County, Ontario, Canada, L7A

## 18 Floor 4 - Bedroom



Dimensions: 10'3" x 8'7"  
Area: 84 sq. ft  
Counted as Living Area:  
Yes

Heated: Yes  
Finished: Yes  
Enclosed: Yes  
Contiguous:  
Yes  
Permitted: Yes  
Wet Space: No  
Addition: No  
Conversion: No

## 19 Floor 4 - Bedroom



Dimensions: 13'7" x 13'1"  
Area: 137 sq. ft  
Counted as Living Area:  
Yes

Heated: Yes  
Finished: Yes  
Enclosed: Yes  
Contiguous:  
Yes  
Permitted: Yes  
Wet Space: No  
Addition: No  
Conversion: No

## 20 Floor 4 - Primary Bedroom



Dimensions: 13'7" x 10'9"  
Area: 146 sq. ft  
Counted as Living Area:  
Yes

Heated: Yes  
Finished: Yes  
Enclosed: Yes  
Contiguous:  
Yes  
Permitted: Yes  
Wet Space: No  
Addition: No  
Conversion: No

# 63 Padbury Trail, Northwest Brampton, Brampton, Peel County, Ontario, Canada, L7A

## 21 Floor 4 - W.i.c.



Dimensions: 4'6" x 4'4"  
Area: 20 sq. ft  
Counted as Living Area:  
Yes

Heated: Yes  
Finished: Yes  
Enclosed: Yes  
Contiguous:  
Yes  
Permitted: Yes  
Wet Space: No  
Addition: No  
Conversion: No