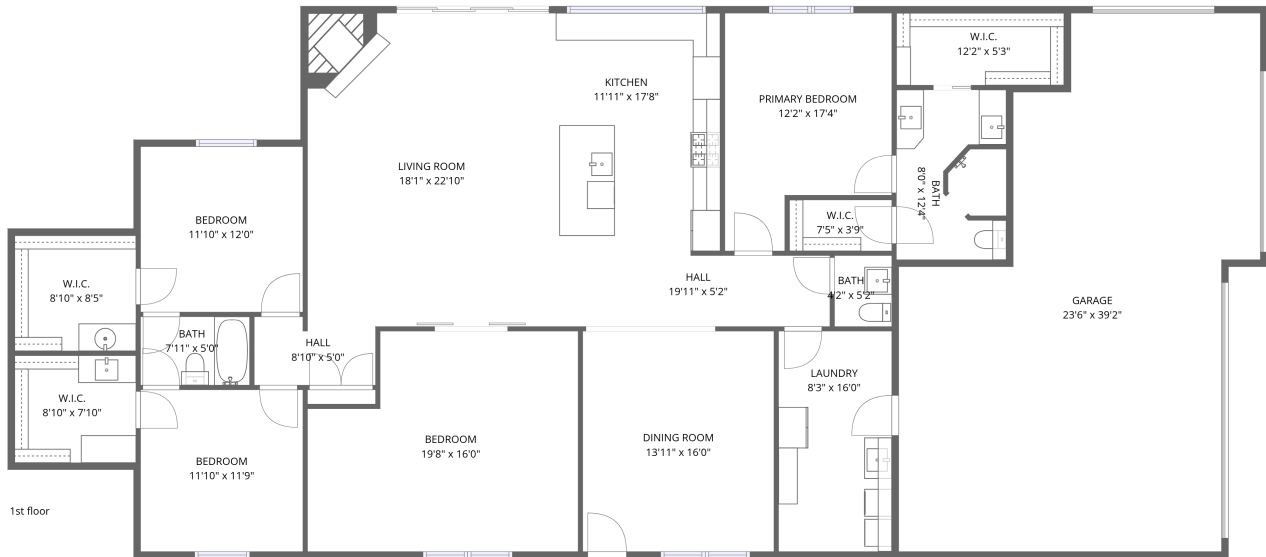


Home data report

323 Vz CR 2103,Canton,TX,US




**Total Area: 2344 sq. ft**

1st Floor: 2344 sq. ft

Excluded: Garage 792 sq. ft, Walls: 156 sq. ft

## Property summary

 **1** Floors

 **4** Bedrooms

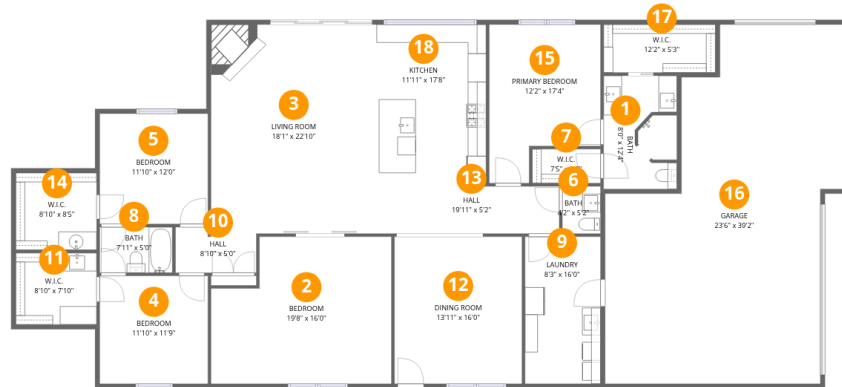
 **2** Bathrooms

Home data report

**323 Vz CR 2103,Canton,TX,US**

 **1**  
Half baths

 **1**  
Garages



## Room dimensions

Floor 1

Total:2344sqft

Excluded: 792sqft

#		Dimensions	sqft	Counted as living area
1	Bath	8'0" x 12'4"	95 sq. ft	Yes
2	Bedroom	19'8" x 16'0"	286 sq. ft	Yes
3	Living Room	18'1" x 22'10"	412 sq. ft	Yes
4	Bedroom	11'10" x 11'9"	139 sq. ft	Yes
5	Bedroom	11'10" x 12'0"	142 sq. ft	Yes
6	Bath	4'2" x 5'2"	22 sq. ft	Yes
7	W.I.C.	7'5" x 3'9"	28 sq. ft	Yes
8	Bath	7'11" x 5'0"	40 sq. ft	Yes
9	Laundry	8'3" x 16'0"	132 sq. ft	Yes
10	Hall	8'10" x 5'0"	40 sq. ft	Yes
11	W.I.C.	8'10" x 7'10"	69 sq. ft	Yes

Home data report

**323 Vz CR 2103,Canton,TX,US**

#		Dimensions	sqft	Counted as living area
12	Dining Room	13'11" x 16'0"	223 sq. ft	Yes
13	Hall	19'11" x 5'2"	103 sq. ft	Yes
14	W.I.C.	8'10" x 8'5"	74 sq. ft	Yes
15	Primary Bedroom	12'2" x 17'4"	178 sq. ft	Yes
16	Garage	23'6" x 39'2"	792 sq. ft	No
17	W.I.C.	12'2" x 5'3"	64 sq. ft	Yes
18	Kitchen	11'11" x 17'8"	210 sq. ft	Yes

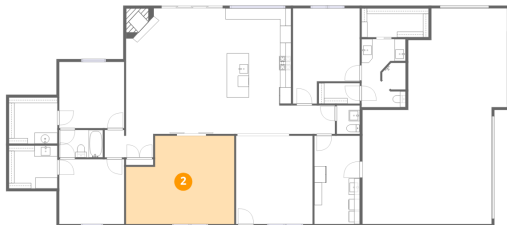
## 1 Floor 1 - Bath



Dimensions: 8'0" x 12'4"  
Area: 95 sq. ft  
Counted as living area: Yes

Heated: Yes  
Finished: Yes  
Enclosed: Yes  
Contiguous: Yes  
Permitted: Yes  
Wet space: Yes  
Addition: No  
Conversion: No

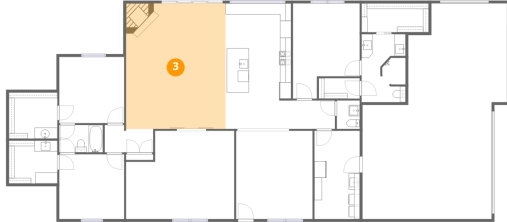
## 2 Floor 1 - Bedroom



Dimensions: 19'8" x 16'0"  
Area: 286 sq. ft  
Counted as living area: Yes

Heated: Yes  
Finished: Yes  
Enclosed: Yes  
Contiguous: Yes  
Permitted: Yes  
Wet space: No  
Addition: No  
Conversion: No

### 3 Floor 1 - Living Room



Dimensions: 18'1" x 22'10"  
Area: 412 sq. ft  
Counted as living area: Yes

Heated: Yes  
Finished: Yes  
Enclosed: Yes  
Contiguous: Yes  
Permitted: Yes  
Wet space: No  
Addition: No  
Conversion: No

### 4 Floor 1 - Bedroom



Dimensions: 11'10" x 11'9"  
Area: 139 sq. ft  
Counted as living area: Yes

Heated: Yes  
Finished: Yes  
Enclosed: Yes  
Contiguous: Yes  
Permitted: Yes  
Wet space: No  
Addition: No  
Conversion: No

### 5 Floor 1 - Bedroom



Dimensions: 11'10" x 12'0"  
Area: 142 sq. ft  
Counted as living area: Yes

Heated: Yes  
Finished: Yes  
Enclosed: Yes  
Contiguous: Yes  
Permitted: Yes  
Wet space: No  
Addition: No  
Conversion: No

**6** Floor 1 - Bath



Dimensions: 4'2" x 5'2"  
Area: 22 sq. ft  
Counted as living area: Yes

Heated: Yes  
Finished: Yes  
Enclosed: Yes  
Contiguous: Yes  
Permitted: Yes  
Wet space: Yes  
Addition: No  
Conversion: No

**7** Floor 1 - W.I.C.



Dimensions: 7'5" x 3'9"  
Area: 28 sq. ft  
Counted as living area: Yes

Heated: Yes  
Finished: Yes  
Enclosed: Yes  
Contiguous: Yes  
Permitted: Yes  
Wet space: No  
Addition: No  
Conversion: No

**8** Floor 1 - Bath



Dimensions: 7'11" x 5'0"  
Area: 40 sq. ft  
Counted as living area: Yes

Heated: Yes  
Finished: Yes  
Enclosed: Yes  
Contiguous: Yes  
Permitted: Yes  
Wet space: Yes  
Addition: No  
Conversion: No

## 9 Floor 1 - Laundry



Dimensions: 8'3" x 16'0"  
Area: 132 sq. ft  
Counted as living area: Yes

Heated: Yes  
Finished: Yes  
Enclosed: Yes  
Contiguous: Yes  
Permitted: Yes  
Wet space: No  
Addition: No  
Conversion: No

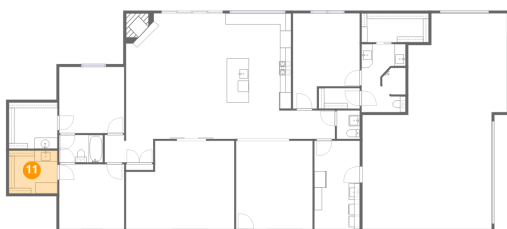
## 10 Floor 1 - Hall



Dimensions: 8'10" x 5'0"  
Area: 40 sq. ft  
Counted as living area: Yes

Heated: Yes  
Finished: Yes  
Enclosed: Yes  
Contiguous: Yes  
Permitted: Yes  
Wet space: No  
Addition: No  
Conversion: No

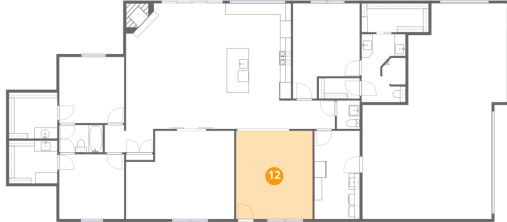
## 11 Floor 1 - W.I.C.



Dimensions: 8'10" x 7'10"  
Area: 69 sq. ft  
Counted as living area: Yes

Heated: Yes  
Finished: Yes  
Enclosed: Yes  
Contiguous: Yes  
Permitted: Yes  
Wet space: No  
Addition: No  
Conversion: No

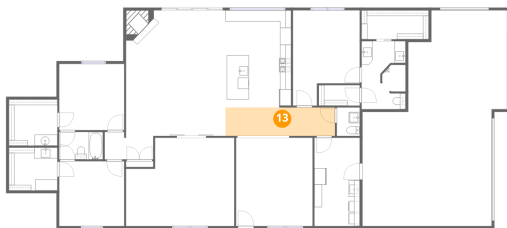
## 12 Floor 1 - Dining Room



Dimensions: 13'11" x 16'0"  
Area: 223 sq. ft  
Counted as living area: Yes

Heated: Yes  
Finished: Yes  
Enclosed: Yes  
Contiguous: Yes  
Permitted: Yes  
Wet space: No  
Addition: No  
Conversion: No

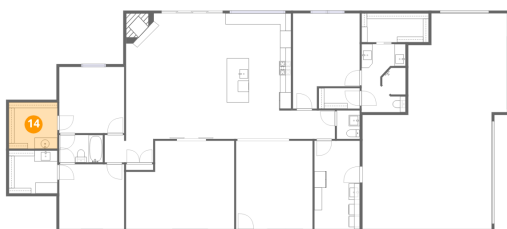
## 13 Floor 1 - Hall



Dimensions: 19'11" x 5'2"  
Area: 103 sq. ft  
Counted as living area: Yes

Heated: Yes  
Finished: Yes  
Enclosed: Yes  
Contiguous: Yes  
Permitted: Yes  
Wet space: No  
Addition: No  
Conversion: No

## 14 Floor 1 - W.I.C.



Dimensions: 8'10" x 8'5"  
Area: 74 sq. ft  
Counted as living area: Yes

Heated: Yes  
Finished: Yes  
Enclosed: Yes  
Contiguous: Yes  
Permitted: Yes  
Wet space: No  
Addition: No  
Conversion: No

### 15 Floor 1 - Primary Bedroom



Dimensions: 12'2" x 17'4"  
Area: 178 sq. ft  
Counted as living area: Yes

Heated: Yes  
Finished: Yes  
Enclosed: Yes  
Contiguous: Yes  
Permitted: Yes  
Wet space: No  
Addition: No  
Conversion: No

### 16 Floor 1 - Garage



Dimensions: 23'6" x 39'2"  
Area: 792 sq. ft  
Counted as living area: No

Heated: No  
Finished: No  
Enclosed: Yes  
Contiguous: Yes  
Permitted: Yes  
Wet space: No  
Addition: No  
Conversion: No

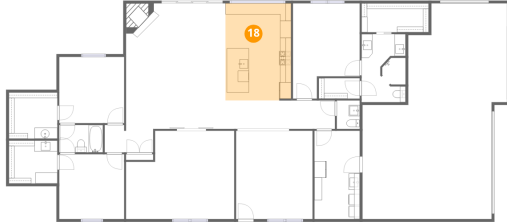
### 17 Floor 1 - W.I.C.



Dimensions: 12'2" x 5'3"  
Area: 64 sq. ft  
Counted as living area: Yes

Heated: Yes  
Finished: Yes  
Enclosed: Yes  
Contiguous: Yes  
Permitted: Yes  
Wet space: No  
Addition: No  
Conversion: No

**18** Floor 1 - Kitchen



**Dimensions:** 11'11" x 17'8"  
**Area:** 210 sq. ft  
**Counted as living area:** Yes

**Heated:** Yes  
**Finished:** Yes  
**Enclosed:** Yes  
**Contiguous:** Yes  
**Permitted:** Yes  
**Wet space:** No  
**Addition:** No  
**Conversion:** No