

Home report

5975 Landview Drive, Homeplace, Cave Spring, Roanoke,
Roanoke County, Virginia, United States, 24018



Total GLA: 3643 sq. ft

Below Ground: 0 sq. ft, Floor 2: 1291 sq. ft, Floor 3: 1605 sq. ft, Floor 4: 747 sq. ft

Excluded: Room 247 sq. ft, Garage 890 sq. ft, Basement 541 sq. ft, Screened porch 167 sq. ft, Porch 204 sq. ft, Deck 176 sq. ft, Low ceiling 48 sq. ft

Property summary

**4** Floors

**4** Bedrooms

**3** Bathrooms

Home report

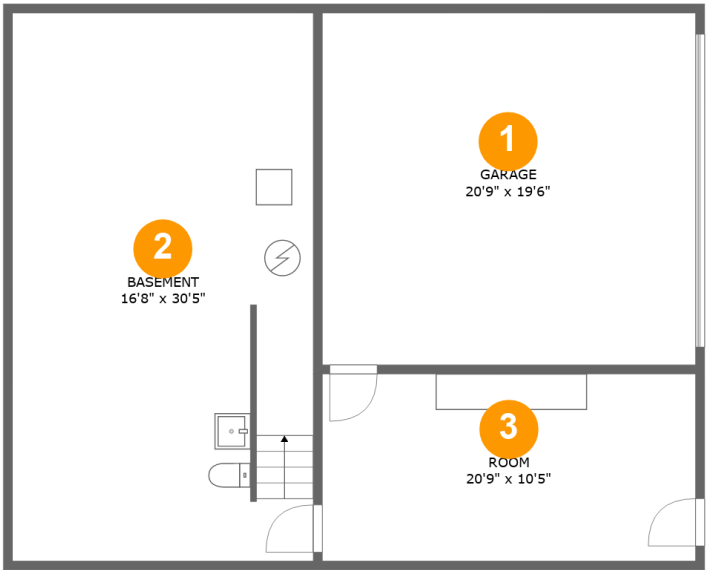
5975 Landview Drive, Homeplace, Cave Spring, Roanoke,
Roanoke County, Virginia, United States, 24018

 **2**
Half baths

 **2**
Garages

Home report

5975 Landview Drive, Homeplace, Cave Spring, Roanoke,
Roanoke County, Virginia, United States, 24018



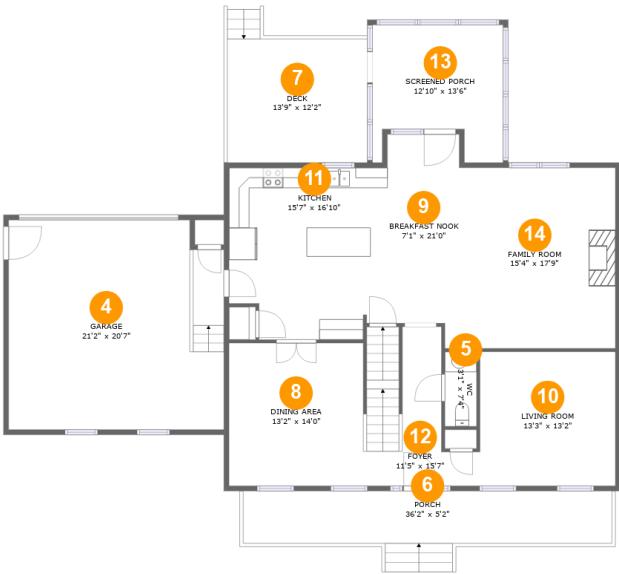
Room dimensions

Floor 1 Below ground Total:0sqft Excluded: 1223sqft

| # | | Max Dimensions | sqft | Included |
|---|----------|----------------|------------|----------|
| 1 | Garage | 20'9" x 19'6" | 404 sq. ft | No |
| 2 | Basement | 16'8" x 30'5" | 508 sq. ft | No |
| 3 | Room | 20'9" x 10'5" | 215 sq. ft | No |

Home report

5975 Landview Drive, Homeplace, Cave Spring, Roanoke,
Roanoke County, Virginia, United States, 24018



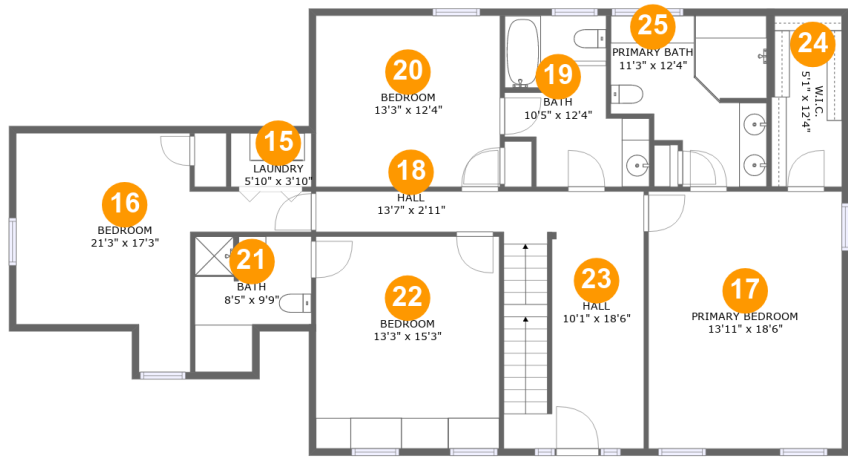
Room dimensions

Floor 2 Total:1291sqft Excluded: 1002sqft

| # | | Max Dimensions | sqft | Included |
|----|----------------|----------------|------------|----------|
| 4 | Garage | 21'2" x 20'7" | 425 sq. ft | No |
| 5 | WC | 3'1" x 7'4" | 23 sq. ft | Yes |
| 6 | Porch | 36'2" x 5'2" | 204 sq. ft | No |
| 7 | Deck | 13'9" x 12'2" | 176 sq. ft | No |
| 8 | Dining Area | 13'2" x 14'0" | 185 sq. ft | Yes |
| 9 | Breakfast Nook | 7'1" x 21'0" | 134 sq. ft | Yes |
| 10 | Living Room | 13'3" x 13'2" | 175 sq. ft | Yes |
| 11 | Kitchen | 15'7" x 16'10" | 247 sq. ft | Yes |
| 12 | Foyer | 11'5" x 15'7" | 127 sq. ft | Yes |
| 13 | Screened Porch | 12'10" x 13'6" | 147 sq. ft | No |
| 14 | Family Room | 15'4" x 17'9" | 271 sq. ft | Yes |

Home report

5975 Landview Drive, Homeplace, Cave Spring, Roanoke,
Roanoke County, Virginia, United States, 24018



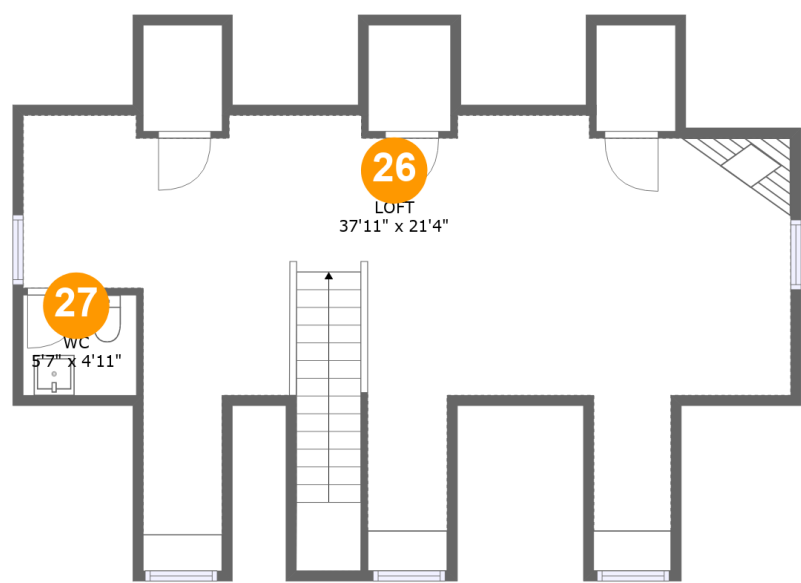
Room dimensions

Floor 3 Total:1605sqft Excluded: 0sqft

| # | | Max Dimensions | sqft | Included |
|----|-----------------|----------------|------------|----------|
| 15 | Laundry | 5'10" x 3'10" | 22 sq. ft | Yes |
| 16 | Bedroom | 21'3" x 17'3" | 211 sq. ft | Yes |
| 17 | Primary Bedroom | 13'11" x 18'6" | 258 sq. ft | Yes |
| 18 | Hall | 13'7" x 2'11" | 40 sq. ft | Yes |
| 19 | Bath | 10'5" x 12'4" | 96 sq. ft | Yes |
| 20 | Bedroom | 13'3" x 12'4" | 164 sq. ft | Yes |
| 21 | Bath | 8'5" x 9'9" | 66 sq. ft | Yes |
| 22 | Bedroom | 13'3" x 15'3" | 202 sq. ft | Yes |
| 23 | Hall | 10'1" x 18'6" | 187 sq. ft | Yes |
| 24 | W.I.C. | 5'1" x 12'4" | 63 sq. ft | Yes |
| 25 | Primary Bath | 11'3" x 12'4" | 114 sq. ft | Yes |

Home report

5975 Landview Drive, Homeplace, Cave Spring, Roanoke,
Roanoke County, Virginia, United States, 24018



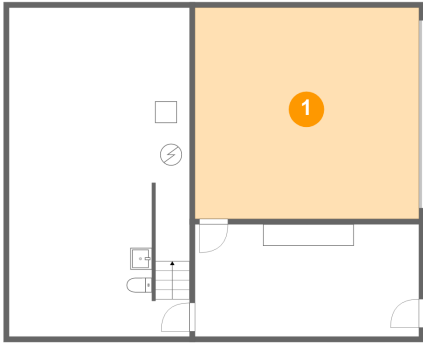
Room dimensions

Floor 4 Total:747sqft Excluded: 48sqft

| # | | Max Dimensions | sqft | Included |
|----|------|----------------|------------|----------|
| 26 | Loft | 37'11" x 21'4" | 600 sq. ft | Yes |
| 27 | WC | 5'7" x 4'11" | 28 sq. ft | Yes |

5975 Landview Drive, Homeplace, Cave Spring, Roanoke,
Roanoke County, Virginia, United States, 24018

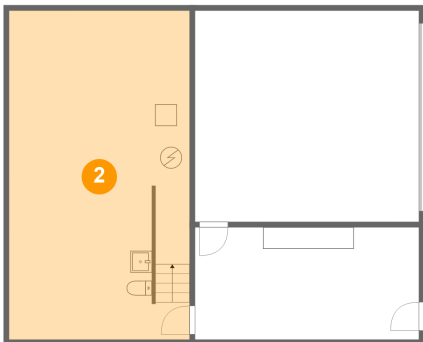
1 Floor 1 - Garage



Max Dimensions: 20'9" x 19'6"
Calculated Area: 404 sq. ft
Included: No

Heated: No
Finished: No
Enclosed: Yes
Contiguous: Yes
Permitted: Yes
Wet space: No
Addition: No
Conversion: No

2 Floor 1 - Basement

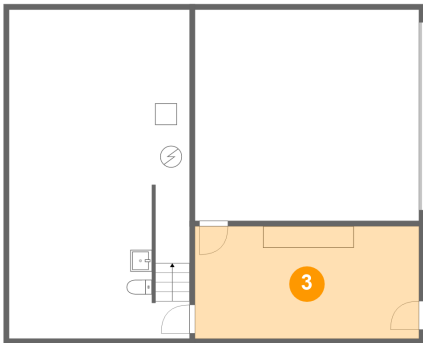


Max Dimensions: 16'8" x 30'5"
Calculated Area: 508 sq. ft
Included: No

Heated: Yes
Finished: No
Enclosed: Yes
Contiguous: Yes
Permitted: Yes
Wet space: No
Addition: No
Conversion: No

5975 Landview Drive, Homeplace, Cave Spring, Roanoke,
Roanoke County, Virginia, United States, 24018

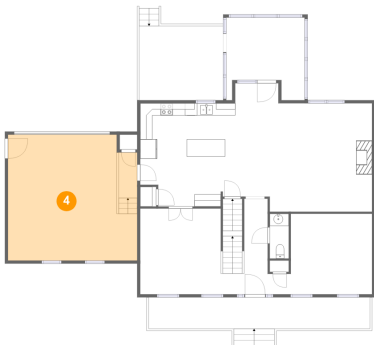
3 Floor 1 - Room



Max Dimensions: 20'9" x 10'5"
Calculated Area: 215 sq. ft
Included: No

Heated: Yes
Finished: Yes
Enclosed: Yes
Contiguous: No
Permitted: Yes
Wet space: No
Addition: No
Conversion: No

4 Floor 2 - Garage



Max Dimensions: 21'2" x 20'7"
Calculated Area: 425 sq. ft
Included: No

Heated: No
Finished: No
Enclosed: Yes
Contiguous: Yes
Permitted: Yes
Wet space: No
Addition: No
Conversion: No

5 Floor 2 - WC

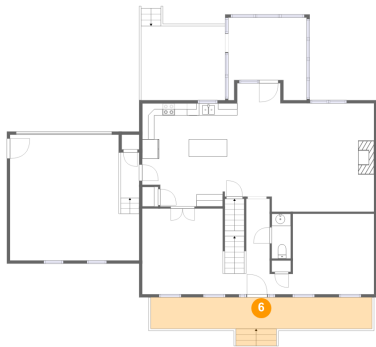


Max Dimensions: 3'1" x 7'4"
Calculated Area: 23 sq. ft
Included: Yes

Heated: Yes
Finished: Yes
Enclosed: Yes
Contiguous: Yes
Permitted: Yes
Wet space: Yes
Addition: No
Conversion: No

5975 Landview Drive, Homeplace, Cave Spring, Roanoke,
Roanoke County, Virginia, United States, 24018

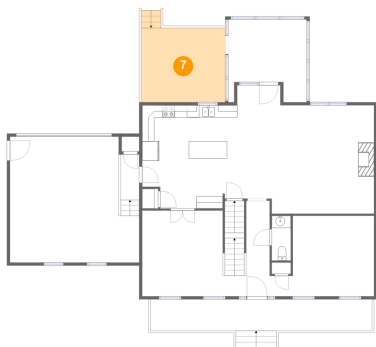
6 Floor 2 - Porch



Max Dimensions: 36'2" x 5'2"
Calculated Area: 204 sq. ft
Included: No

Heated: No
Finished: Yes
Enclosed: No
Contiguous: Yes
Permitted: Yes
Wet space: No
Addition: No
Conversion: No

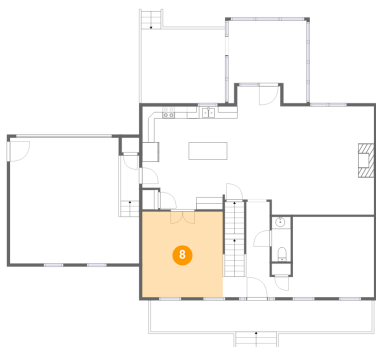
7 Floor 2 - Deck



Max Dimensions: 13'9" x 12'2"
Calculated Area: 176 sq. ft
Included: No

Heated: No
Finished: Yes
Enclosed: No
Contiguous: Yes
Permitted: Yes
Wet space: No
Addition: No
Conversion: No

8 Floor 2 - Dining Area

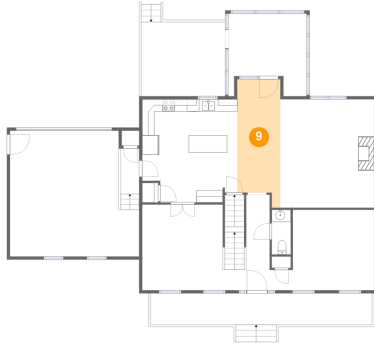


Max Dimensions: 13'2" x 14'0"
Calculated Area: 185 sq. ft
Included: Yes

Heated: Yes
Finished: Yes
Enclosed: Yes
Contiguous: Yes
Permitted: Yes
Wet space: No
Addition: No
Conversion: No

5975 Landview Drive, Homeplace, Cave Spring, Roanoke,
Roanoke County, Virginia, United States, 24018

9 Floor 2 - Breakfast Nook



Max Dimensions: 7'1" x 21'0"
Calculated Area: 134 sq. ft
Included: Yes

Heated: Yes
Finished: Yes
Enclosed: Yes
Contiguous: Yes
Permitted: Yes
Wet space: No
Addition: No
Conversion: No

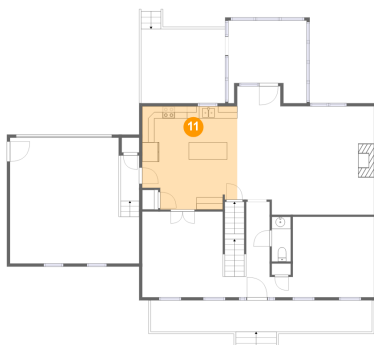
10 Floor 2 - Living Room



Max Dimensions: 13'3" x 13'2"
Calculated Area: 175 sq. ft
Included: Yes

Heated: Yes
Finished: Yes
Enclosed: Yes
Contiguous: Yes
Permitted: Yes
Wet space: No
Addition: No
Conversion: No

11 Floor 2 - Kitchen

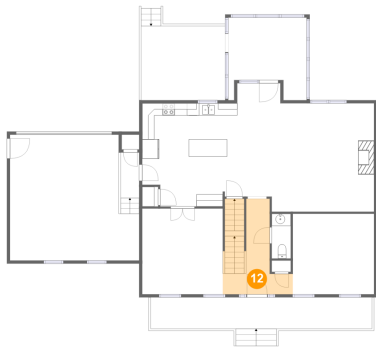


Max Dimensions: 15'7" x 16'10"
Calculated Area: 247 sq. ft
Included: Yes

Heated: Yes
Finished: Yes
Enclosed: Yes
Contiguous: Yes
Permitted: Yes
Wet space: No
Addition: No
Conversion: No

5975 Landview Drive, Homeplace, Cave Spring, Roanoke,
Roanoke County, Virginia, United States, 24018

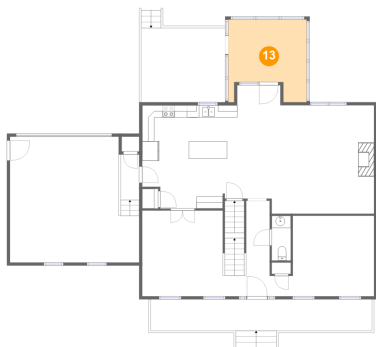
12 Floor 2 - Foyer



Max Dimensions: 11'5" x 15'7"
Calculated Area: 127 sq. ft
Included: Yes

Heated: Yes
Finished: Yes
Enclosed: Yes
Contiguous: Yes
Permitted: Yes
Wet space: No
Addition: No
Conversion: No

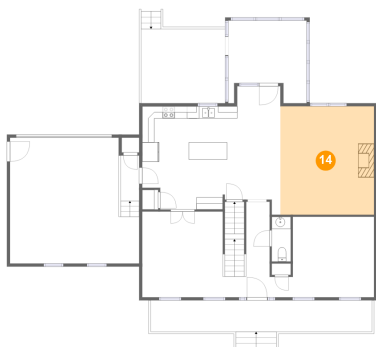
13 Floor 2 - Screened Porch



Max Dimensions: 12'10" x 13'6"
Calculated Area: 147 sq. ft
Included: No

Heated: No
Finished: Yes
Enclosed: No
Contiguous: Yes
Permitted: Yes
Wet space: No
Addition: No
Conversion: No

14 Floor 2 - Family Room

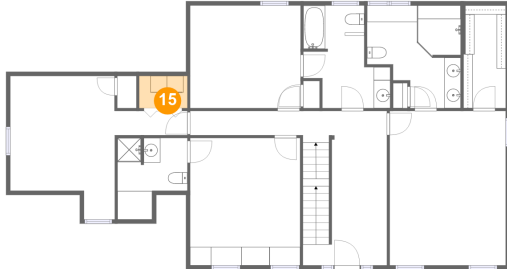


Max Dimensions: 15'4" x 17'9"
Calculated Area: 271 sq. ft
Included: Yes

Heated: Yes
Finished: Yes
Enclosed: Yes
Contiguous: Yes
Permitted: Yes
Wet space: No
Addition: No
Conversion: No

5975 Landview Drive, Homeplace, Cave Spring, Roanoke,
Roanoke County, Virginia, United States, 24018

15 Floor 3 - Laundry



Max Dimensions: 5'10" x 3'10"
Calculated Area: 22 sq. ft
Included: Yes

Heated: Yes
Finished: Yes
Enclosed: Yes
Contiguous: Yes
Permitted: Yes
Wet space: No
Addition: No
Conversion: No

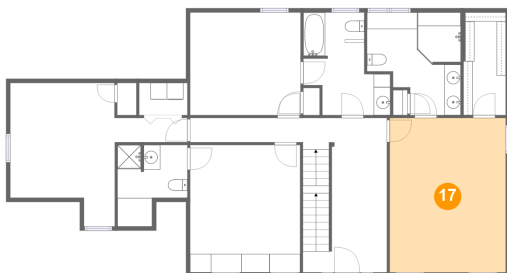
16 Floor 3 - Bedroom



Max Dimensions: 21'3" x 17'3"
Calculated Area: 211 sq. ft
Included: Yes

Heated: Yes
Finished: Yes
Enclosed: Yes
Contiguous: Yes
Permitted: Yes
Wet space: No
Addition: No
Conversion: No

17 Floor 3 - Primary Bedroom

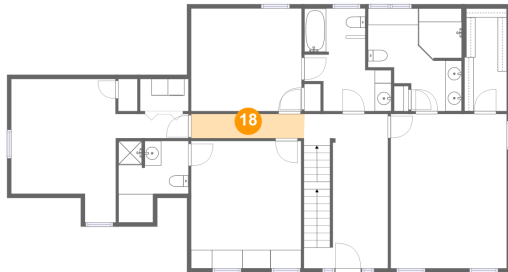


Max Dimensions: 13'11" x 18'6"
Calculated Area: 258 sq. ft
Included: Yes

Heated: Yes
Finished: Yes
Enclosed: Yes
Contiguous: Yes
Permitted: Yes
Wet space: No
Addition: No
Conversion: No

5975 Landview Drive, Homeplace, Cave Spring, Roanoke,
Roanoke County, Virginia, United States, 24018

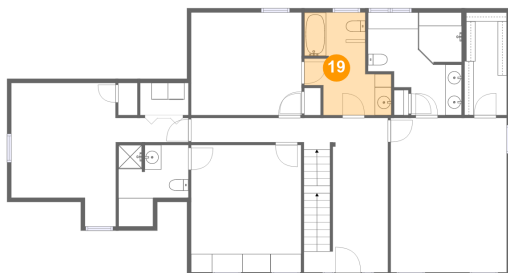
18 Floor 3 - Hall



Max Dimensions: 13'7" x 2'11"
Calculated Area: 40 sq. ft
Included: Yes

Heated: Yes
Finished: Yes
Enclosed: Yes
Contiguous: Yes
Permitted: Yes
Wet space: No
Addition: No
Conversion: No

19 Floor 3 - Bath



Max Dimensions: 10'5" x 12'4"
Calculated Area: 96 sq. ft
Included: Yes

Heated: Yes
Finished: Yes
Enclosed: Yes
Contiguous: Yes
Permitted: Yes
Wet space: Yes
Addition: No
Conversion: No

20 Floor 3 - Bedroom



Max Dimensions: 13'3" x 12'4"
Calculated Area: 164 sq. ft
Included: Yes

Heated: Yes
Finished: Yes
Enclosed: Yes
Contiguous: Yes
Permitted: Yes
Wet space: No
Addition: No
Conversion: No

5975 Landview Drive, Homeplace, Cave Spring, Roanoke,
Roanoke County, Virginia, United States, 24018

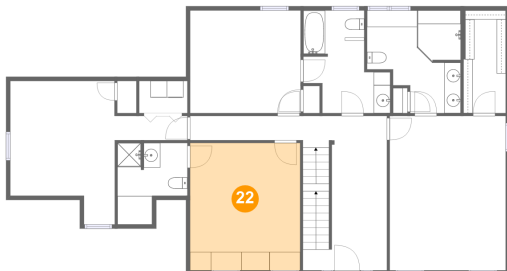
21 Floor 3 - Bath



Max Dimensions: 8'5" x 9'9"
Calculated Area: 66 sq. ft
Included: Yes

Heated: Yes
Finished: Yes
Enclosed: Yes
Contiguous: Yes
Permitted: Yes
Wet space: Yes
Addition: No
Conversion: No

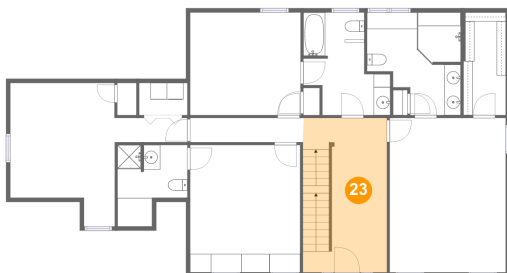
22 Floor 3 - Bedroom



Max Dimensions: 13'3" x 15'3"
Calculated Area: 202 sq. ft
Included: Yes

Heated: Yes
Finished: Yes
Enclosed: Yes
Contiguous: Yes
Permitted: Yes
Wet space: No
Addition: No
Conversion: No

23 Floor 3 - Hall



Max Dimensions: 10'1" x 18'6"
Calculated Area: 187 sq. ft
Included: Yes

Heated: Yes
Finished: Yes
Enclosed: Yes
Contiguous: Yes
Permitted: Yes
Wet space: No
Addition: No
Conversion: No

5975 Landview Drive, Homeplace, Cave Spring, Roanoke,
Roanoke County, Virginia, United States, 24018

24 Floor 3 - W.I.C.



Max Dimensions: 5'1" x 12'4"
Calculated Area: 63 sq. ft
Included: Yes

Heated: Yes
Finished: Yes
Enclosed: Yes
Contiguous: Yes
Permitted: Yes
Wet space: No
Addition: No
Conversion: No

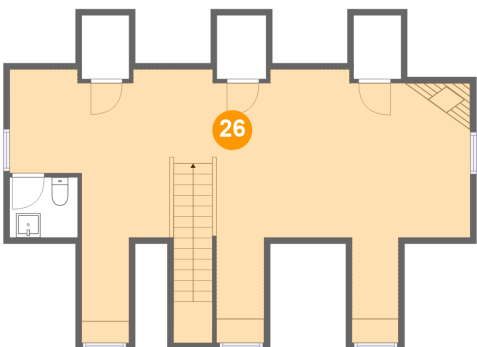
25 Floor 3 - Primary Bath



Max Dimensions: 11'3" x 12'4"
Calculated Area: 114 sq. ft
Included: Yes

Heated: Yes
Finished: Yes
Enclosed: Yes
Contiguous: Yes
Permitted: Yes
Wet space: Yes
Addition: No
Conversion: No

26 Floor 4 - Loft

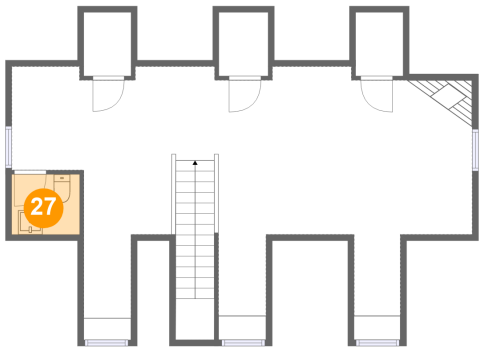


Max Dimensions: 37'11" x 21'4"
Calculated Area: 600 sq. ft
Included: Yes

Heated: Yes
Finished: Yes
Enclosed: Yes
Contiguous: Yes
Permitted: Yes
Wet space: No
Addition: No
Conversion: No

5975 Landview Drive, Homeplace, Cave Spring, Roanoke,
Roanoke County, Virginia, United States, 24018

27 Floor 4 - WC



Max Dimensions: 5'7" x
4'11"
Calculated Area: 28 sq. ft
Included: Yes

Heated: Yes
Finished: Yes
Enclosed: Yes
Contiguous:
Yes
Permitted: Yes
Wet space: Yes
Addition: No
Conversion: No