



Home report


315 Elam Avenue, Ramseur, Randolph County, North Carolina,
United States, 27316





Property summary


 **1** Garages


 **4** Bedrooms

 **2** Bathrooms

 **1** Half baths

 **1** Floors

 **3,226** Gross living area sqft

 **4,236** Total sqft

Home report

315 Elam Avenue, Ramseur, Randolph County, North Carolina,
United States, 27316



Room dimensions

Floor 1 Total sqft: 4236 Living area: 3226

#		Dimensions	sqft	Counted as living area
1	Dining Room	16'1" x 12'10"	207 sq. ft	Yes
2	Primary Bedroom	16'1" x 15'3"	245 sq. ft	Yes
3	Porch	14'2" x 21'2"	281 sq. ft	No
4	Living Room	21'1" x 14'6"	301 sq. ft	Yes
5	Breakfast Nook	13'3" x 12'7"	168 sq. ft	Yes
6	Sunroom	19'7" x 14'9"	290 sq. ft	Yes
7	Kitchen	10'11" x 18'1"	171 sq. ft	Yes
8	Bedroom	12'3" x 15'3"	187 sq. ft	Yes
9	WC	6'6" x 9'7"	52 sq. ft	Yes
10	Storage	10'2" x 5'11"	60 sq. ft	No
11	Garage	24'1" x 28'7"	558 sq. ft	No

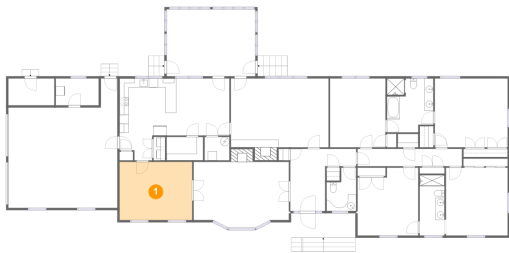
Home report

**315 Elam Avenue, Ramseur, Randolph County, North Carolina,
United States, 27316**

#		Dimensions	sqft	Counted as living area
12	Bath	5'6" x 13'4"	73 sq. ft	Yes
13	Pantry	8'1" x 5'2"	42 sq. ft	Yes
14	Family Room	21'7" x 15'3"	343 sq. ft	Yes
15	Bath	10'3" x 11'11"	115 sq. ft	Yes
16	Bedroom	13'8" x 15'0"	205 sq. ft	Yes
17	Hall	23'1" x 3'10"	89 sq. ft	Yes
18	Foyer	14'7" x 13'9"	132 sq. ft	Yes
19	Storage	9'6" x 5'11"	56 sq. ft	No
20	Bedroom	13'5" x 15'0"	187 sq. ft	Yes

315 Elam Avenue, Ramseur, Randolph County, North Carolina,
United States, 27316

1 Floor 1 - Dining Room



Dimensions: 16'1" x 12'10"
Area: 207 sq. ft
Counted as living area: Yes

Heated: Yes
Finished: Yes
Enclosed: Yes
Contiguous: Yes
Permitted: Yes
Wet space: No
Addition: No
Conversion: No

2 Floor 1 - Primary Bedroom



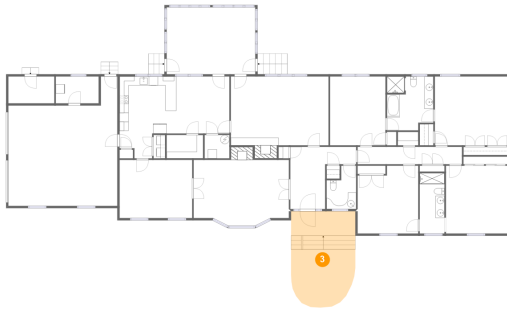
Dimensions: 16'1" x 15'3"
Area: 245 sq. ft
Counted as living area: Yes

Heated: Yes
Finished: Yes
Enclosed: Yes
Contiguous: Yes
Permitted: Yes
Wet space: No
Addition: No
Conversion: No

Home report

315 Elam Avenue, Ramseur, Randolph County, North Carolina,
United States, 27316

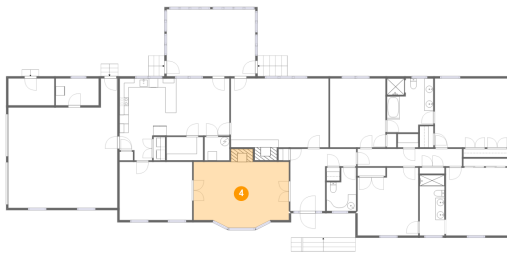
3 Floor 1 - Porch



Dimensions: 14'2" x 21'2"
Area: 281 sq. ft
Counted as living area: No

Heated: No
Finished: No
Enclosed: No
Contiguous: Yes
Permitted: Yes
Wet space: No
Addition: No
Conversion: No

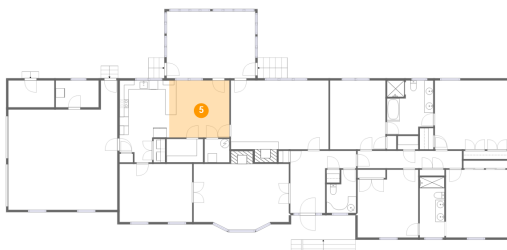
4 Floor 1 - Living Room



Dimensions: 21'1" x 14'6"
Area: 301 sq. ft
Counted as living area: Yes

Heated: Yes
Finished: Yes
Enclosed: Yes
Contiguous: Yes
Permitted: Yes
Wet space: No
Addition: No
Conversion: No

5 Floor 1 - Breakfast Nook



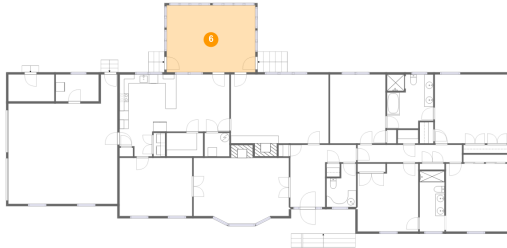
Dimensions: 13'3" x 12'7"
Area: 168 sq. ft
Counted as living area: Yes

Heated: Yes
Finished: Yes
Enclosed: Yes
Contiguous: Yes
Permitted: Yes
Wet space: No
Addition: No
Conversion: No

Home report

315 Elam Avenue, Ramseur, Randolph County, North Carolina,
United States, 27316

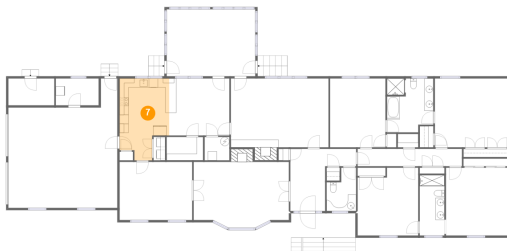
6 Floor 1 - Sunroom



Dimensions: 19'7" x 14'9"
Area: 290 sq. ft
Counted as living area: Yes

Heated: Yes
Finished: Yes
Enclosed: Yes
Contiguous: Yes
Permitted: Yes
Wet space: No
Addition: No
Conversion: No

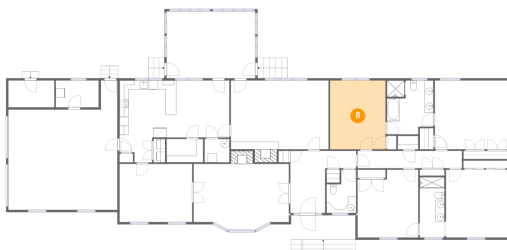
7 Floor 1 - Kitchen



Dimensions: 10'11" x 18'1"
Area: 171 sq. ft
Counted as living area: Yes

Heated: Yes
Finished: Yes
Enclosed: Yes
Contiguous: Yes
Permitted: Yes
Wet space: No
Addition: No
Conversion: No

8 Floor 1 - Bedroom



Dimensions: 12'3" x 15'3"
Area: 187 sq. ft
Counted as living area: Yes

Heated: Yes
Finished: Yes
Enclosed: Yes
Contiguous: Yes
Permitted: Yes
Wet space: No
Addition: No
Conversion: No

Home report

315 Elam Avenue, Ramseur, Randolph County, North Carolina,
United States, 27316

9 Floor 1 - WC



Dimensions: 6'6" x 9'7"
Area: 52 sq. ft
Counted as living area: Yes

Heated: Yes
Finished: Yes
Enclosed: Yes
Contiguous: Yes
Permitted: Yes
Wet space: Yes
Addition: No
Conversion: No

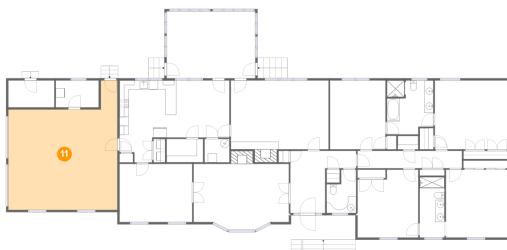
10 Floor 1 - Storage



Dimensions: 10'2" x 5'11"
Area: 60 sq. ft
Counted as living area: No

Heated: No
Finished: No
Enclosed: No
Contiguous: Yes
Permitted: Yes
Wet space: No
Addition: No
Conversion: No

11 Floor 1 - Garage



Dimensions: 24'1" x 28'7"
Area: 558 sq. ft
Counted as living area: No

Heated: No
Finished: No
Enclosed: Yes
Contiguous: Yes
Permitted: Yes
Wet space: No
Addition: No
Conversion: No

Home report

315 Elam Avenue, Ramseur, Randolph County, North Carolina,
United States, 27316

12 Floor 1 - Bath



Dimensions: 5'6" x 13'4"
Area: 73 sq. ft
Counted as living area: Yes

Heated: Yes
Finished: Yes
Enclosed: Yes
Contiguous: Yes
Permitted: Yes
Wet space: Yes
Addition: No
Conversion: No

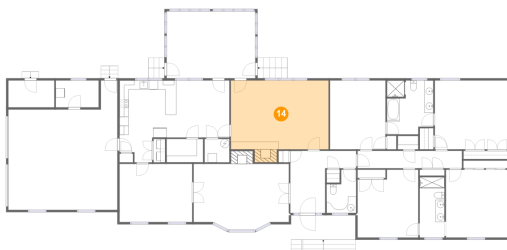
13 Floor 1 - Pantry



Dimensions: 8'1" x 5'2"
Area: 42 sq. ft
Counted as living area: Yes

Heated: Yes
Finished: Yes
Enclosed: Yes
Contiguous: Yes
Permitted: Yes
Wet space: No
Addition: No
Conversion: No

14 Floor 1 - Family Room



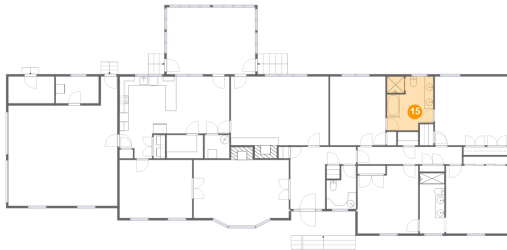
Dimensions: 21'7" x 15'3"
Area: 343 sq. ft
Counted as living area: Yes

Heated: Yes
Finished: Yes
Enclosed: Yes
Contiguous: Yes
Permitted: Yes
Wet space: No
Addition: No
Conversion: No

Home report

315 Elam Avenue, Ramseur, Randolph County, North Carolina,
United States, 27316

15 Floor 1 - Bath



Dimensions: 10'3" x 11'11"
Area: 115 sq. ft
Counted as living area: Yes

Heated: Yes
Finished: Yes
Enclosed: Yes
Contiguous: Yes
Permitted: Yes
Wet space: Yes
Addition: No
Conversion: No

16 Floor 1 - Bedroom



Dimensions: 13'8" x 15'0"
Area: 205 sq. ft
Counted as living area: Yes

Heated: Yes
Finished: Yes
Enclosed: Yes
Contiguous: Yes
Permitted: Yes
Wet space: No
Addition: No
Conversion: No

17 Floor 1 - Hall



Dimensions: 23'1" x 3'10"
Area: 89 sq. ft
Counted as living area: Yes

Heated: Yes
Finished: Yes
Enclosed: Yes
Contiguous: Yes
Permitted: Yes
Wet space: No
Addition: No
Conversion: No

Home report

315 Elam Avenue, Ramseur, Randolph County, North Carolina,
United States, 27316

18 Floor 1 - Foyer



Dimensions: 14'7" x 13'9"
Area: 132 sq. ft
Counted as living area: Yes

Heated: Yes
Finished: Yes
Enclosed: Yes
Contiguous: Yes
Permitted: Yes
Wet space: No
Addition: No
Conversion: No

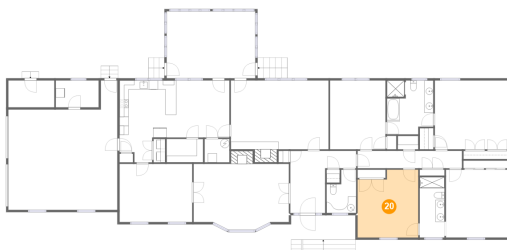
19 Floor 1 - Storage



Dimensions: 9'6" x 5'11"
Area: 56 sq. ft
Counted as living area: No

Heated: No
Finished: No
Enclosed: No
Contiguous: Yes
Permitted: Yes
Wet space: No
Addition: No
Conversion: No

20 Floor 1 - Bedroom



Dimensions: 13'5" x 15'0"
Area: 187 sq. ft
Counted as living area: Yes

Heated: Yes
Finished: Yes
Enclosed: Yes
Contiguous: Yes
Permitted: Yes
Wet space: No
Addition: No
Conversion: No