


# 4 Hilltop Drive, Hudson, Hillsborough County, New Hampshire, United States, 03051




## Property summary

 **2** Garages

 **4** Bedrooms

 **4** Bathrooms

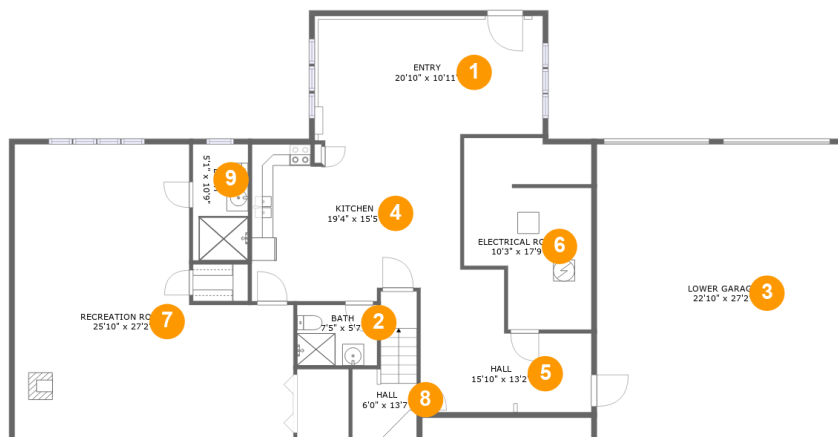
 **2** Half baths

 **4** Floors

 **5,831** Gross living area sqft

 **7,782** Total sqft

# 4 Hilltop Drive, Hudson, Hillsborough County, New Hampshire, United States, 03051



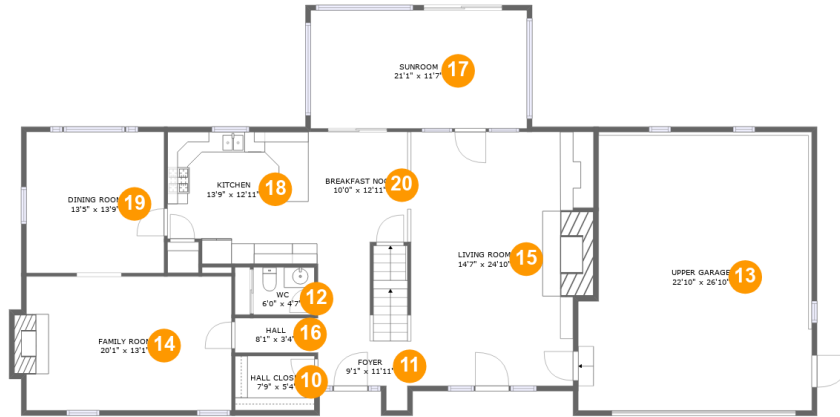
## Room dimensions

Floor 1

Total sqft: 2418 Living area: 1565

#		Dimensions	sqft	Counted as living area
1	Entry	20'10" x 10'11"	232 sq. ft	Yes
2	Bath	7'5" x 5'7"	42 sq. ft	Yes
3	Lower Garage	22'10" x 27'2"	621 sq. ft	No
4	Kitchen	19'4" x 15'5"	277 sq. ft	Yes
5	Hall	15'10" x 13'2"	158 sq. ft	Yes
6	Electrical Room	10'3" x 17'9"	180 sq. ft	No
7	Recreation Room	25'10" x 27'2"	559 sq. ft	Yes
8	Hall	6'0" x 13'7"	62 sq. ft	Yes
9	Bath	5'1" x 10'9"	55 sq. ft	Yes

# 4 Hilltop Drive, Hudson, Hillsborough County, New Hampshire, United States, 03051



## Room dimensions

Floor 2

Total sqft: 2411

Living area: 1778

#		Dimensions	sqft	Counted as living area
10	Hall Closet	7'9" x 5'4"	41 sq. ft	Yes
11	Foyer	9'1" x 11'11"	116 sq. ft	Yes
12	WC	6'0" x 4'7"	28 sq. ft	Yes
13	Upper Garage	22'10" x 26'10"	588 sq. ft	No
14	Family Room	20'1" x 13'1"	269 sq. ft	Yes
15	Living Room	14'7" x 24'10"	424 sq. ft	Yes
16	Hall	8'1" x 3'4"	27 sq. ft	Yes
17	Sunroom	21'1" x 11'7"	244 sq. ft	Yes
18	Kitchen	13'9" x 12'11"	169 sq. ft	Yes
19	Dining Room	13'5" x 13'9"	185 sq. ft	Yes
20	Breakfast Nook	10'0" x 12'11"	121 sq. ft	Yes

# 4 Hilltop Drive, Hudson, Hillsborough County, New Hampshire, United States, 03051



## Room dimensions

Floor 3

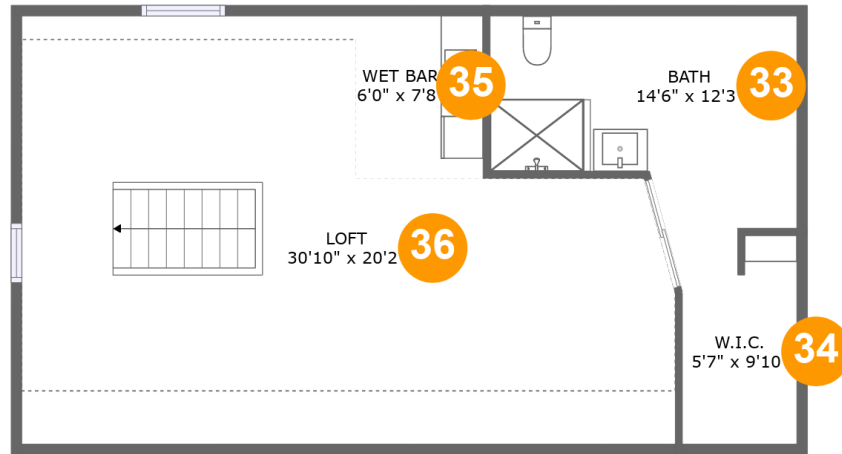
Total sqft: 2158 Living area: 1806

#		Dimensions	sqft	Counted as living area
21	Hall	16'9" x 3'8"	62 sq. ft	Yes
22	Bedroom	16'4" x 12'8"	190 sq. ft	Yes
23	Bath	8'4" x 10'2"	69 sq. ft	Yes
24	Hall	15'10" x 5'1"	72 sq. ft	Yes
25	Primary Bath	17'0" x 7'7"	115 sq. ft	Yes
26	W.I.C.	5'6" x 6'4"	35 sq. ft	Yes
27	Bedroom	16'4" x 10'2"	166 sq. ft	Yes
28	Open To Below	15'10" x 20'5"	344 sq. ft	No
29	Primary Bedroom	22'10" x 20'6"	441 sq. ft	Yes
30	Laundry	11'11" x 6'7"	79 sq. ft	Yes
31	Hall	8'7" x 20'3"	174 sq. ft	Yes

# 4 Hilltop Drive, Hudson, Hillsborough County, New Hampshire, United States, 03051

#		Dimensions	sqft	Counted as living area
32	Bedroom	11'11" x 12'8"	151 sq. ft	Yes

# 4 Hilltop Drive, Hudson, Hillsborough County, New Hampshire, United States, 03051



## Room dimensions

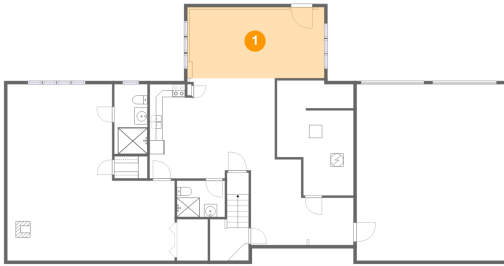
Floor 4

Total sqft: 795 Living area: 682

#		Dimensions	sqft	Counted as living area
33	Bath	14'6" x 12'3"	114 sq. ft	Yes
34	W.I.C.	5'7" x 9'10"	34 sq. ft	Yes
35	Wet Bar	6'0" x 7'8"	39 sq. ft	Yes
36	Loft	30'10" x 20'2"	408 sq. ft	Yes

# 4 Hilltop Drive, Hudson, Hillsborough County, New Hampshire, United States, 03051

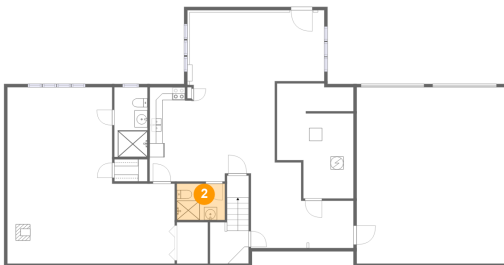
## 1 Floor 1 - Entry



Dimensions: 20'10" x 10'11"  
Area: 232 sq. ft  
Counted as living area: Yes

Heated: Yes  
Finished: Yes  
Enclosed: Yes  
Contiguous: Yes  
Permitted: Yes  
Wet space: No  
Addition: No  
Conversion: No

## 2 Floor 1 - Bath



Dimensions: 7'5" x 5'7"  
Area: 42 sq. ft  
Counted as living area: Yes

Heated: Yes  
Finished: Yes  
Enclosed: Yes  
Contiguous: Yes  
Permitted: Yes  
Wet space: Yes  
Addition: No  
Conversion: No

# 4 Hilltop Drive, Hudson, Hillsborough County, New Hampshire, United States, 03051

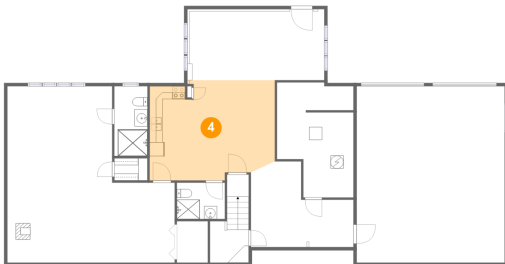
## 3 Floor 1 - Lower Garage



Dimensions: 22'10" x 27'2"  
Area: 621 sq. ft  
Counted as living area: No

Heated: No  
Finished: No  
Enclosed: Yes  
Contiguous: Yes  
Permitted: Yes  
Wet space: No  
Addition: No  
Conversion: No

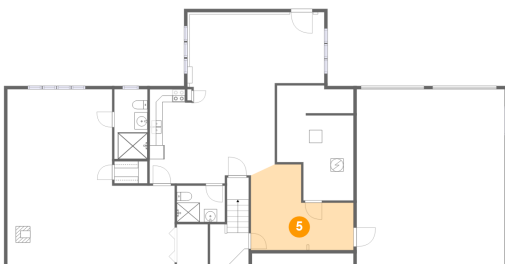
## 4 Floor 1 - Kitchen



Dimensions: 19'4" x 15'5"  
Area: 277 sq. ft  
Counted as living area: Yes

Heated: Yes  
Finished: Yes  
Enclosed: Yes  
Contiguous: Yes  
Permitted: Yes  
Wet space: No  
Addition: No  
Conversion: No

## 5 Floor 1 - Hall



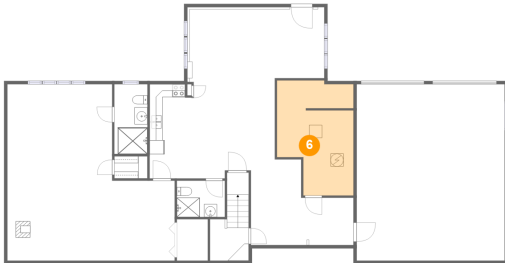
Dimensions: 15'10" x 13'2"  
Area: 158 sq. ft  
Counted as living area: Yes

Heated: Yes  
Finished: Yes  
Enclosed: Yes  
Contiguous: Yes  
Permitted: Yes  
Wet space: No  
Addition: No  
Conversion: No



# 4 Hilltop Drive, Hudson, Hillsborough County, New Hampshire, United States, 03051

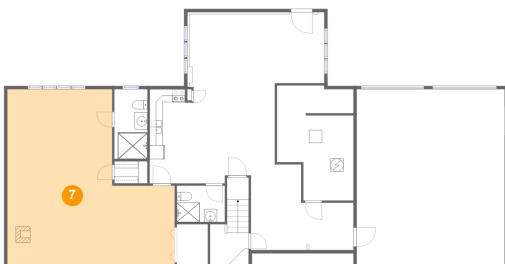
## 6 Floor 1 - Electrical Room



Dimensions: 10'3" x 17'9"  
Area: 180 sq. ft  
Counted as living area: No

Heated: No  
Finished: No  
Enclosed: Yes  
Contiguous: Yes  
Permitted: Yes  
Wet space: No  
Addition: No  
Conversion: No

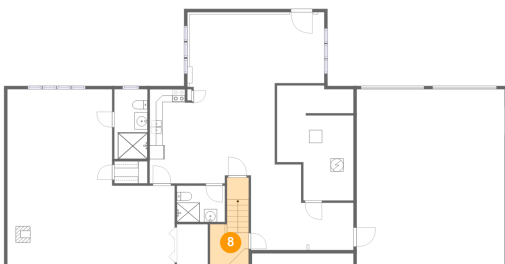
## 7 Floor 1 - Recreation Room



Dimensions: 25'10" x 27'2"  
Area: 559 sq. ft  
Counted as living area: Yes

Heated: Yes  
Finished: Yes  
Enclosed: Yes  
Contiguous: Yes  
Permitted: Yes  
Wet space: No  
Addition: No  
Conversion: No

## 8 Floor 1 - Hall



Dimensions: 6'0" x 13'7"  
Area: 62 sq. ft  
Counted as living area: Yes

Heated: Yes  
Finished: Yes  
Enclosed: Yes  
Contiguous: Yes  
Permitted: Yes  
Wet space: No  
Addition: No  
Conversion: No

# 4 Hilltop Drive, Hudson, Hillsborough County, New Hampshire, United States, 03051

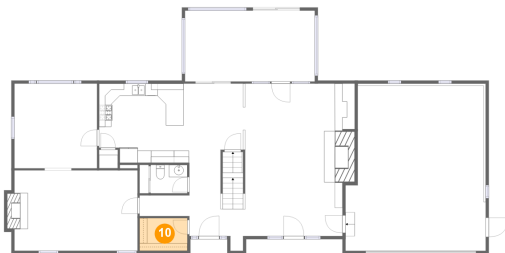
## 9 Floor 1 - Bath



Dimensions: 5'1" x 10'9"  
Area: 55 sq. ft  
Counted as living area: Yes

Heated: Yes  
Finished: Yes  
Enclosed: Yes  
Contiguous: Yes  
Permitted: Yes  
Wet space: Yes  
Addition: No  
Conversion: No

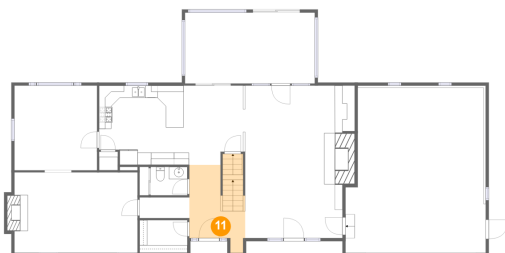
## 10 Floor 2 - Hall Closet



Dimensions: 7'9" x 5'4"  
Area: 41 sq. ft  
Counted as living area: Yes

Heated: Yes  
Finished: Yes  
Enclosed: Yes  
Contiguous: Yes  
Permitted: Yes  
Wet space: No  
Addition: No  
Conversion: No

## 11 Floor 2 - Foyer

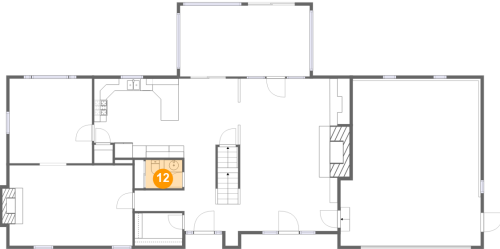


Dimensions: 9'1" x 11'11"  
Area: 116 sq. ft  
Counted as living area: Yes

Heated: Yes  
Finished: Yes  
Enclosed: Yes  
Contiguous: Yes  
Permitted: Yes  
Wet space: No  
Addition: No  
Conversion: No

# 4 Hilltop Drive, Hudson, Hillsborough County, New Hampshire, United States, 03051

## 12 Floor 2 - WC



Dimensions: 6'0" x 4'7"  
Area: 28 sq. ft  
Counted as living area: Yes

Heated: Yes  
Finished: Yes  
Enclosed: Yes  
Contiguous: Yes  
Permitted: Yes  
Wet space: Yes  
Addition: No  
Conversion: No

## 13 Floor 2 - Upper Garage



Dimensions: 22'10" x 26'10"  
Area: 588 sq. ft  
Counted as living area: No

Heated: No  
Finished: No  
Enclosed: Yes  
Contiguous: Yes  
Permitted: Yes  
Wet space: No  
Addition: No  
Conversion: No

## 14 Floor 2 - Family Room



Dimensions: 20'1" x 13'1"  
Area: 269 sq. ft  
Counted as living area: Yes

Heated: Yes  
Finished: Yes  
Enclosed: Yes  
Contiguous: Yes  
Permitted: Yes  
Wet space: No  
Addition: No  
Conversion: No

# 4 Hilltop Drive, Hudson, Hillsborough County, New Hampshire, United States, 03051

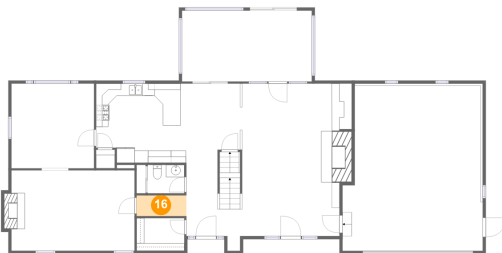
## 15 Floor 2 - Living Room



Dimensions: 14'7" x 24'10"  
Area: 424 sq. ft  
Counted as living area: Yes

Heated: Yes  
Finished: Yes  
Enclosed: Yes  
Contiguous: Yes  
Permitted: Yes  
Wet space: No  
Addition: No  
Conversion: No

## 16 Floor 2 - Hall



Dimensions: 8'1" x 3'4"  
Area: 27 sq. ft  
Counted as living area: Yes

Heated: Yes  
Finished: Yes  
Enclosed: Yes  
Contiguous: Yes  
Permitted: Yes  
Wet space: No  
Addition: No  
Conversion: No

## 17 Floor 2 - Sunroom

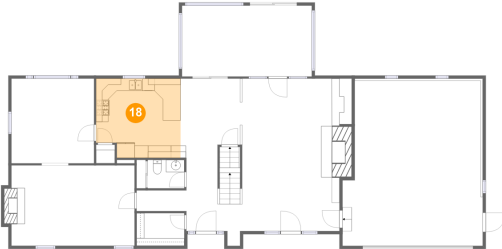


Dimensions: 21'1" x 11'7"  
Area: 244 sq. ft  
Counted as living area: Yes

Heated: Yes  
Finished: Yes  
Enclosed: Yes  
Contiguous: Yes  
Permitted: Yes  
Wet space: No  
Addition: No  
Conversion: No

# 4 Hilltop Drive, Hudson, Hillsborough County, New Hampshire, United States, 03051

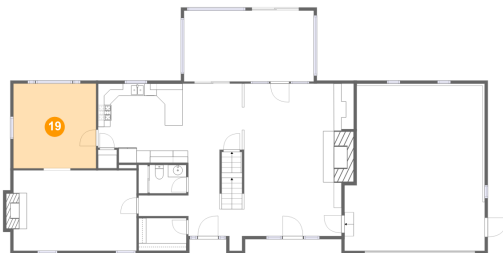
## 18 Floor 2 - Kitchen



Dimensions: 13'9" x 12'11"  
Area: 169 sq. ft  
Counted as living area: Yes

Heated: Yes  
Finished: Yes  
Enclosed: Yes  
Contiguous: Yes  
Permitted: Yes  
Wet space: No  
Addition: No  
Conversion: No

## 19 Floor 2 - Dining Room



Dimensions: 13'5" x 13'9"  
Area: 185 sq. ft  
Counted as living area: Yes

Heated: Yes  
Finished: Yes  
Enclosed: Yes  
Contiguous: Yes  
Permitted: Yes  
Wet space: No  
Addition: No  
Conversion: No

## 20 Floor 2 - Breakfast Nook

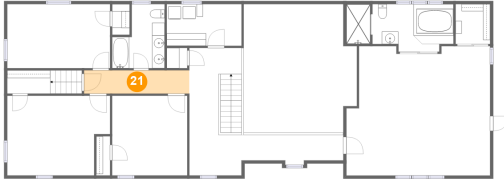


Dimensions: 10'0" x 12'11"  
Area: 121 sq. ft  
Counted as living area: Yes

Heated: Yes  
Finished: Yes  
Enclosed: Yes  
Contiguous: Yes  
Permitted: Yes  
Wet space: No  
Addition: No  
Conversion: No

# 4 Hilltop Drive, Hudson, Hillsborough County, New Hampshire, United States, 03051

## 21 Floor 3 - Hall



Dimensions: 16'9" x 3'8"  
Area: 62 sq. ft  
Counted as living area: Yes

Heated: Yes  
Finished: Yes  
Enclosed: Yes  
Contiguous: Yes  
Permitted: Yes  
Wet space: No  
Addition: No  
Conversion: No

## 22 Floor 3 - Bedroom



Dimensions: 16'4" x 12'8"  
Area: 190 sq. ft  
Counted as living area: Yes

Heated: Yes  
Finished: Yes  
Enclosed: Yes  
Contiguous: Yes  
Permitted: Yes  
Wet space: No  
Addition: No  
Conversion: No

## 23 Floor 3 - Bath



Dimensions: 8'4" x 10'2"  
Area: 69 sq. ft  
Counted as living area: Yes

Heated: Yes  
Finished: Yes  
Enclosed: Yes  
Contiguous: Yes  
Permitted: Yes  
Wet space: Yes  
Addition: No  
Conversion: No

# 4 Hilltop Drive, Hudson, Hillsborough County, New Hampshire, United States, 03051

## 24 Floor 3 - Hall



Dimensions: 15'10" x 5'1"  
Area: 72 sq. ft  
Counted as living area: Yes

Heated: Yes  
Finished: Yes  
Enclosed: Yes  
Contiguous: Yes  
Permitted: Yes  
Wet space: No  
Addition: No  
Conversion: No

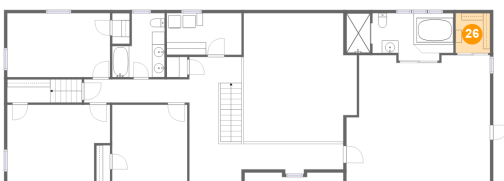
## 25 Floor 3 - Primary Bath



Dimensions: 17'0" x 7'7"  
Area: 115 sq. ft  
Counted as living area: Yes

Heated: Yes  
Finished: Yes  
Enclosed: Yes  
Contiguous: Yes  
Permitted: Yes  
Wet space: Yes  
Addition: No  
Conversion: No

## 26 Floor 3 - W.I.C.



Dimensions: 5'6" x 6'4"  
Area: 35 sq. ft  
Counted as living area: Yes

Heated: Yes  
Finished: Yes  
Enclosed: Yes  
Contiguous: Yes  
Permitted: Yes  
Wet space: No  
Addition: No  
Conversion: No

# 4 Hilltop Drive, Hudson, Hillsborough County, New Hampshire, United States, 03051

## 27 Floor 3 - Bedroom



Dimensions: 16'4" x 10'2"  
Area: 166 sq. ft  
Counted as living area: Yes

Heated: Yes  
Finished: Yes  
Enclosed: Yes  
Contiguous: Yes  
Permitted: Yes  
Wet space: No  
Addition: No  
Conversion: No

## 28 Floor 3 - Open To Below



Dimensions: 15'10" x 20'5"  
Area: 344 sq. ft  
Counted as living area: No

Heated: No  
Finished: No  
Enclosed: No  
Contiguous: Yes  
Permitted: No  
Wet space: No  
Addition: No  
Conversion: No

## 29 Floor 3 - Primary Bedroom



Dimensions: 22'10" x 20'6"  
Area: 441 sq. ft  
Counted as living area: Yes

Heated: Yes  
Finished: Yes  
Enclosed: Yes  
Contiguous: Yes  
Permitted: Yes  
Wet space: No  
Addition: No  
Conversion: No



# 4 Hilltop Drive, Hudson, Hillsborough County, New Hampshire, United States, 03051

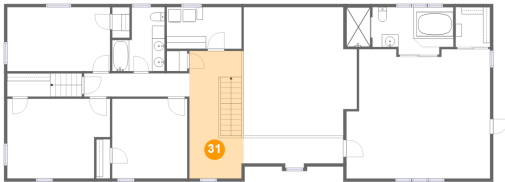
## 30 Floor 3 - Laundry



Dimensions: 11'11" x 6'7"  
Area: 79 sq. ft  
Counted as living area: Yes

Heated: Yes  
Finished: Yes  
Enclosed: Yes  
Contiguous: Yes  
Permitted: Yes  
Wet space: No  
Addition: No  
Conversion: No

## 31 Floor 3 - Hall



Dimensions: 8'7" x 20'3"  
Area: 174 sq. ft  
Counted as living area: Yes

Heated: Yes  
Finished: Yes  
Enclosed: Yes  
Contiguous: Yes  
Permitted: Yes  
Wet space: No  
Addition: No  
Conversion: No

## 32 Floor 3 - Bedroom

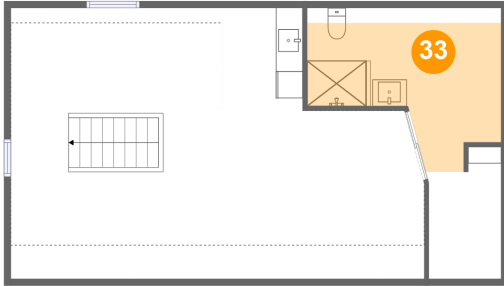


Dimensions: 11'11" x 12'8"  
Area: 151 sq. ft  
Counted as living area: Yes

Heated: Yes  
Finished: Yes  
Enclosed: Yes  
Contiguous: Yes  
Permitted: Yes  
Wet space: No  
Addition: No  
Conversion: No

# 4 Hilltop Drive, Hudson, Hillsborough County, New Hampshire, United States, 03051

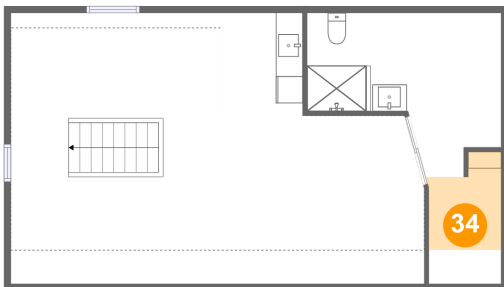
## 33 Floor 4 - Bath



Dimensions: 14'6" x 12'3"  
Area: 114 sq. ft  
Counted as living area: Yes

Heated: Yes  
Finished: Yes  
Enclosed: Yes  
Contiguous: Yes  
Permitted: Yes  
Wet space: Yes  
Addition: No  
Conversion: No

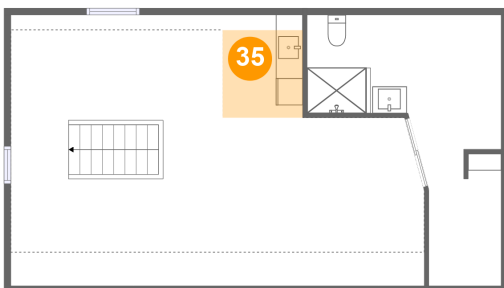
## 34 Floor 4 - W.I.C.



Dimensions: 5'7" x 9'10"  
Area: 34 sq. ft  
Counted as living area: Yes

Heated: Yes  
Finished: Yes  
Enclosed: Yes  
Contiguous: Yes  
Permitted: Yes  
Wet space: No  
Addition: No  
Conversion: No

## 35 Floor 4 - Wet Bar

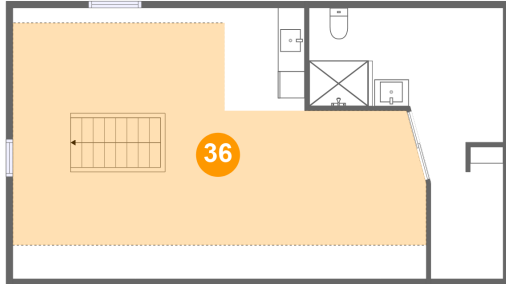


Dimensions: 6'0" x 7'8"  
Area: 39 sq. ft  
Counted as living area: Yes

Heated: Yes  
Finished: Yes  
Enclosed: Yes  
Contiguous: Yes  
Permitted: Yes  
Wet space: No  
Addition: No  
Conversion: No

# 4 Hilltop Drive, Hudson, Hillsborough County, New Hampshire, United States, 03051

## 36 Floor 4 - Loft



Dimensions: 30'10" x 20'2"  
Area: 408 sq. ft  
Counted as living area: Yes

Heated: Yes  
Finished: Yes  
Enclosed: Yes  
Contiguous: Yes  
Permitted: Yes  
Wet space: No  
Addition: No  
Conversion: No