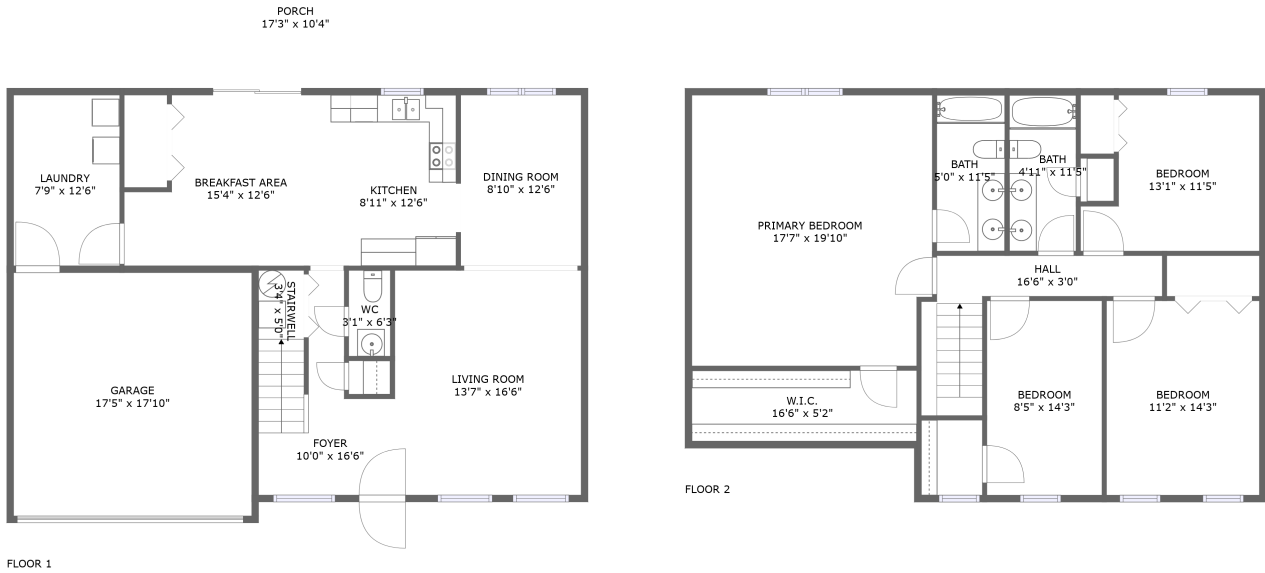



7004 Linn Drive, Lemonton, Hollins, Roanoke County, Virginia, United States, 24019



Property summary

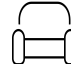
 **1** Garages

 **4** Bedrooms

 **2** Bathrooms

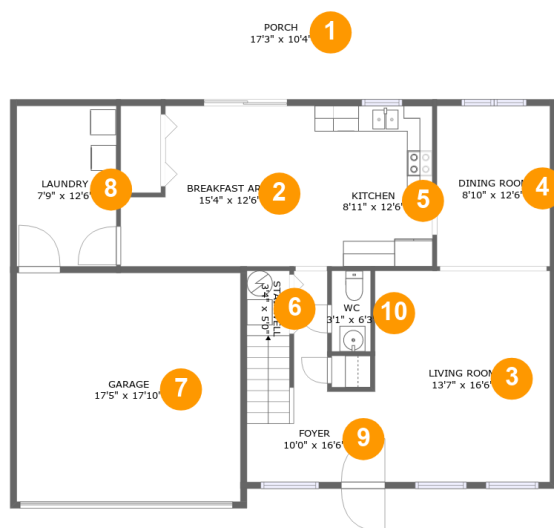
 **1** Half baths

 **2** Floors

 **2,195**
Gross living
area sqft

 **2,724**
Total sqft

7004 Linn Drive, Lemonton, Hollins, Roanoke County, Virginia, United States, 24019



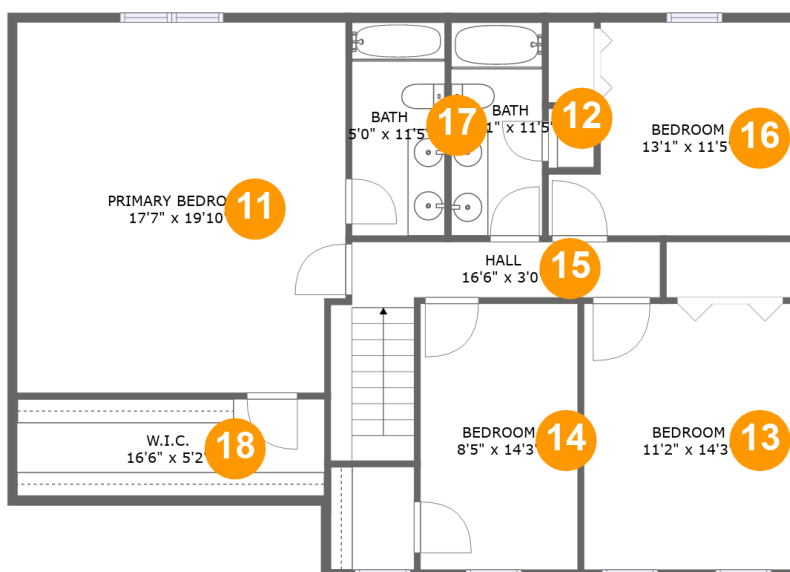
Room dimensions

Floor 1

Total sqft: 1499 Living area: 970

#		Dimensions	sqft	Counted as living area
1	Outdoor	17'3" x 10'4"	180 sq. ft	No
2	Breakfast Area	15'4" x 12'6"	167 sq. ft	Yes
3	Living Room	13'7" x 16'6"	225 sq. ft	Yes
4	Dining Room	8'10" x 12'6"	110 sq. ft	Yes
5	Kitchen	8'11" x 12'6"	112 sq. ft	Yes
6	Stairwell	3'4" x 5'0"	17 sq. ft	No
7	Garage	17'5" x 17'10"	311 sq. ft	No
8	Utility	7'9" x 12'6"	97 sq. ft	Yes
9	Entry	10'0" x 16'6"	110 sq. ft	Yes
10	Bath	3'1" x 6'3"	19 sq. ft	Yes

7004 Linn Drive, Lemonton, Hollins, Roanoke County, Virginia, United States, 24019



Room dimensions

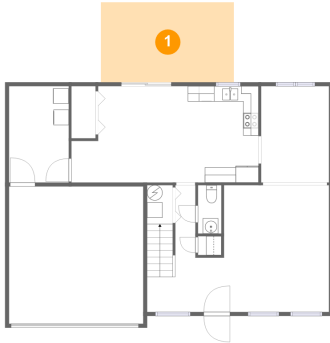
Floor 2

Total sqft: 1225 Living area: 1225

#		Dimensions	sqft	Counted as living area
11	Bedroom	17'7" x 19'10"	344 sq. ft	Yes
12	Bath	4'11" x 11'5"	56 sq. ft	Yes
13	Bedroom	11'2" x 14'3"	160 sq. ft	Yes
14	Bedroom	8'5" x 14'3"	120 sq. ft	Yes
15	Hall	16'6" x 3'0"	88 sq. ft	Yes
16	Bedroom	13'1" x 11'5"	127 sq. ft	Yes
17	Bath	5'0" x 11'5"	57 sq. ft	Yes
18	Cl	16'6" x 5'2"	86 sq. ft	Yes

7004 Linn Drive, Lemonton, Hollins, Roanoke County, Virginia, United States, 24019

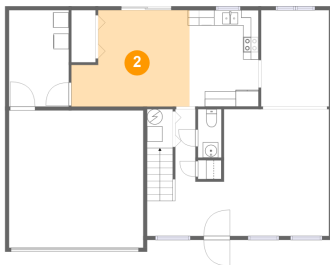
1 Floor 1 - Outdoor



Dimensions: 17'3" x 10'4"
Area: 180 sq. ft
Counted as living area: No

Heated: No
Finished: Yes
Enclosed: No
Contiguous: Yes
Permitted: Yes
Wet space: No
Addition: No
Conversion: No

2 Floor 1 - Breakfast Area



Dimensions: 15'4" x 12'6"
Area: 167 sq. ft
Counted as living area: Yes

Heated: Yes
Finished: Yes
Enclosed: Yes
Contiguous: Yes
Permitted: Yes
Wet space: No
Addition: No
Conversion: No

7004 Linn Drive, Lemonton, Hollins, Roanoke County,
Virginia, United States, 24019

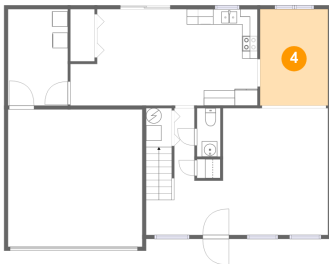
3 Floor 1 - Living Room



Dimensions: 13'7" x 16'6"
Area: 225 sq. ft
Counted as living area: Yes

Heated: Yes
Finished: Yes
Enclosed: Yes
Contiguous: Yes
Permitted: Yes
Wet space: No
Addition: No
Conversion: No

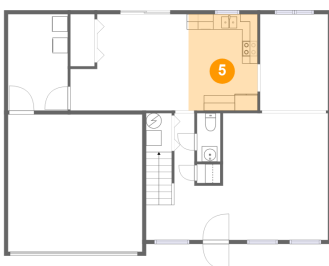
4 Floor 1 - Dining Room



Dimensions: 8'10" x 12'6"
Area: 110 sq. ft
Counted as living area: Yes

Heated: Yes
Finished: Yes
Enclosed: Yes
Contiguous: Yes
Permitted: Yes
Wet space: No
Addition: No
Conversion: No

5 Floor 1 - Kitchen

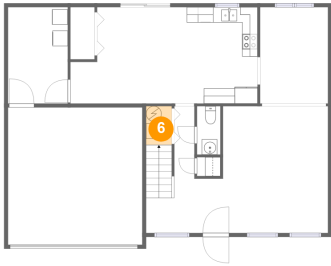


Dimensions: 8'11" x 12'6"
Area: 112 sq. ft
Counted as living area: Yes

Heated: Yes
Finished: Yes
Enclosed: Yes
Contiguous: Yes
Permitted: Yes
Wet space: No
Addition: No
Conversion: No

7004 Linn Drive, Lemonton, Hollins, Roanoke County,
Virginia, United States, 24019

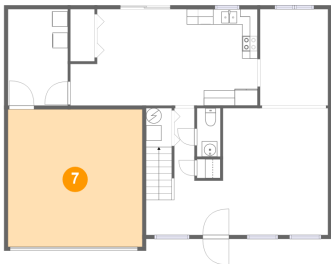
6 Floor 1 - Stairwell



Dimensions: 3'4" x 5'0"
Area: 17 sq. ft
Counted as living area: No

Heated: No
Finished: No
Enclosed: No
Contiguous: Yes
Permitted: No
Wet space: No
Addition: No
Conversion: No

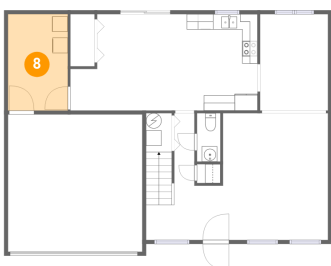
7 Floor 1 - Garage



Dimensions: 17'5" x 17'10"
Area: 311 sq. ft
Counted as living area: No

Heated: No
Finished: No
Enclosed: Yes
Contiguous: Yes
Permitted: Yes
Wet space: No
Addition: No
Conversion: No

8 Floor 1 - Utility

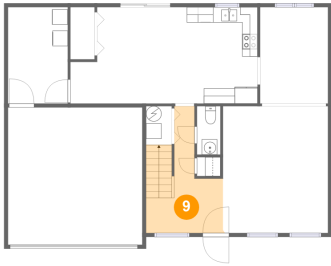


Dimensions: 7'9" x 12'6"
Area: 97 sq. ft
Counted as living area: Yes

Heated: Yes
Finished: Yes
Enclosed: Yes
Contiguous: Yes
Permitted: Yes
Wet space: No
Addition: No
Conversion: No

7004 Linn Drive, Lemonton, Hollins, Roanoke County,
Virginia, United States, 24019

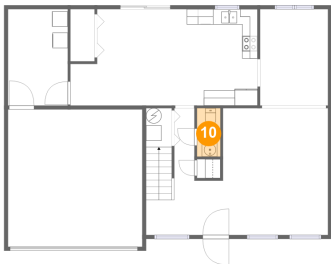
9 Floor 1 - Entry



Dimensions: 10'0" x 16'6"
Area: 110 sq. ft
Counted as living area: Yes

Heated: Yes
Finished: Yes
Enclosed: Yes
Contiguous: Yes
Permitted: Yes
Wet space: No
Addition: No
Conversion: No

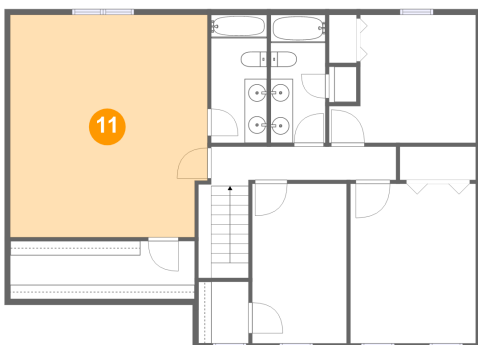
10 Floor 1 - Bath



Dimensions: 3'1" x 6'3"
Area: 19 sq. ft
Counted as living area: Yes

Heated: Yes
Finished: Yes
Enclosed: Yes
Contiguous: Yes
Permitted: Yes
Wet space: Yes
Addition: No
Conversion: No

11 Floor 2 - Bedroom

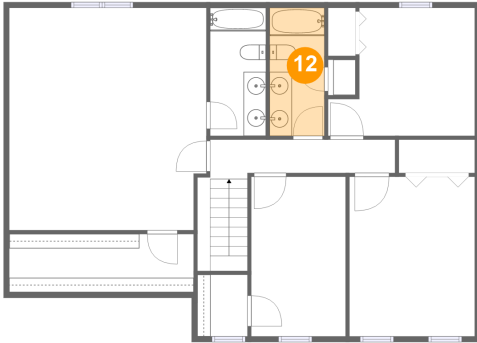


Dimensions: 17'7" x 19'10"
Area: 344 sq. ft
Counted as living area: Yes

Heated: Yes
Finished: Yes
Enclosed: Yes
Contiguous: Yes
Permitted: Yes
Wet space: No
Addition: No
Conversion: No

7004 Linn Drive, Lemonton, Hollins, Roanoke County,
Virginia, United States, 24019

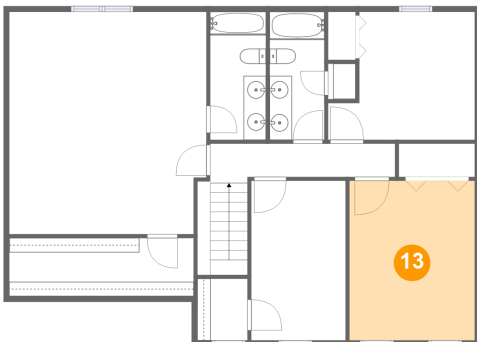
12 Floor 2 - Bath



Dimensions: 4'11" x 11'5"
Area: 56 sq. ft
Counted as living area: Yes

Heated: Yes
Finished: Yes
Enclosed: Yes
Contiguous: Yes
Permitted: Yes
Wet space: Yes
Addition: No
Conversion: No

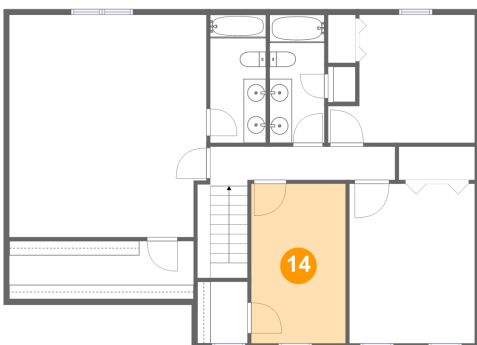
13 Floor 2 - Bedroom



Dimensions: 11'2" x 14'3"
Area: 160 sq. ft
Counted as living area: Yes

Heated: Yes
Finished: Yes
Enclosed: Yes
Contiguous: Yes
Permitted: Yes
Wet space: No
Addition: No
Conversion: No

14 Floor 2 - Bedroom

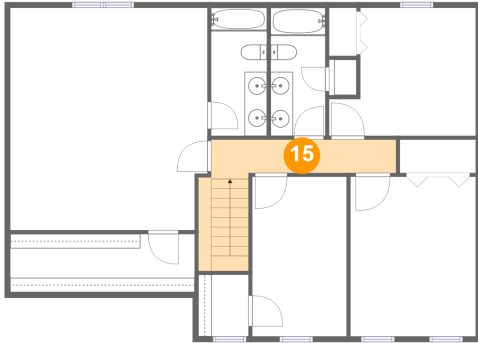


Dimensions: 8'5" x 14'3"
Area: 120 sq. ft
Counted as living area: Yes

Heated: Yes
Finished: Yes
Enclosed: Yes
Contiguous: Yes
Permitted: Yes
Wet space: No
Addition: No
Conversion: No

7004 Linn Drive, Lemonton, Hollins, Roanoke County,
Virginia, United States, 24019

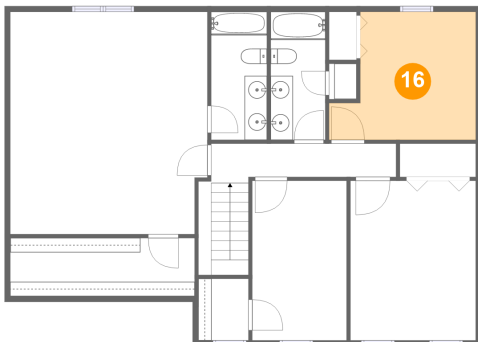
15 Floor 2 - Hall



Dimensions: 16'6" x 3'0"
Area: 88 sq. ft
Counted as living area: Yes

Heated: Yes
Finished: Yes
Enclosed: Yes
Contiguous: Yes
Permitted: Yes
Wet space: No
Addition: No
Conversion: No

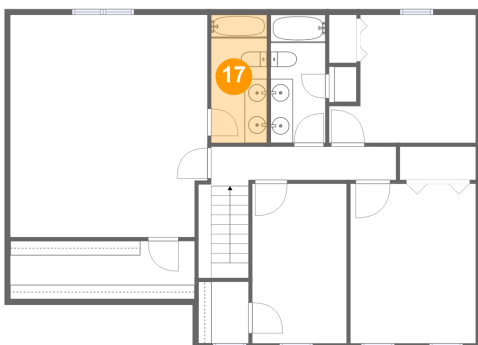
16 Floor 2 - Bedroom



Dimensions: 13'1" x 11'5"
Area: 127 sq. ft
Counted as living area: Yes

Heated: Yes
Finished: Yes
Enclosed: Yes
Contiguous: Yes
Permitted: Yes
Wet space: No
Addition: No
Conversion: No

17 Floor 2 - Bath

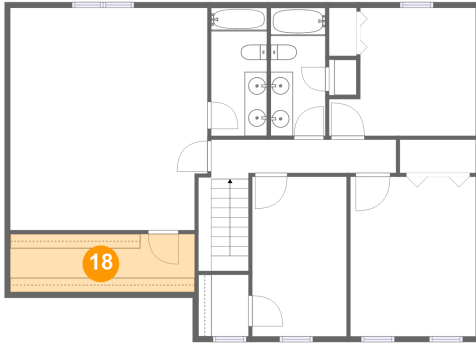


Dimensions: 5'0" x 11'5"
Area: 57 sq. ft
Counted as living area: Yes

Heated: Yes
Finished: Yes
Enclosed: Yes
Contiguous: Yes
Permitted: Yes
Wet space: Yes
Addition: No
Conversion: No

7004 Linn Drive, Lemonton, Hollins, Roanoke County,
Virginia, United States, 24019

18 Floor 2 - Cl



Dimensions: 16'6" x 5'2"
Area: 86 sq. ft
Counted as living area: Yes

Heated: Yes
Finished: Yes
Enclosed: Yes
Contiguous: Yes
Permitted: Yes
Wet space: No
Addition: No
Conversion: No