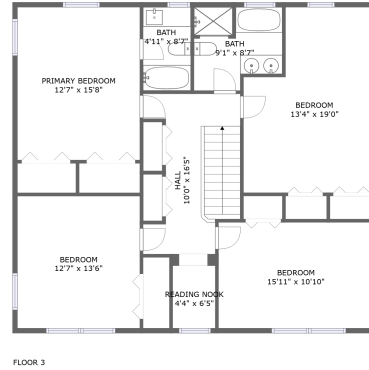
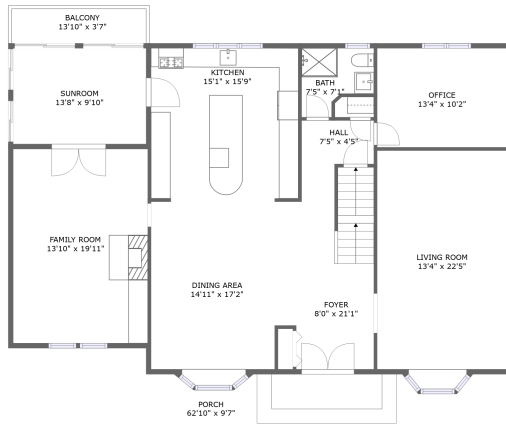
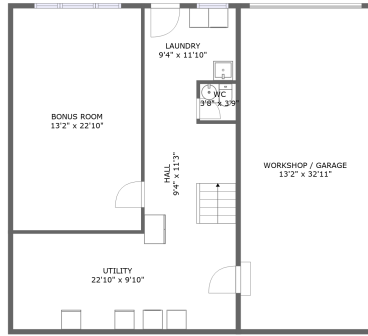


# 2515 Sharmar Road, Cave Spring, Roanoke, Roanoke County, Virginia, United States, 24018



FLOOR 2




FLOOR 1

## Property Summary

 **1** garages

 **4** bedrooms

 **3** bathrooms

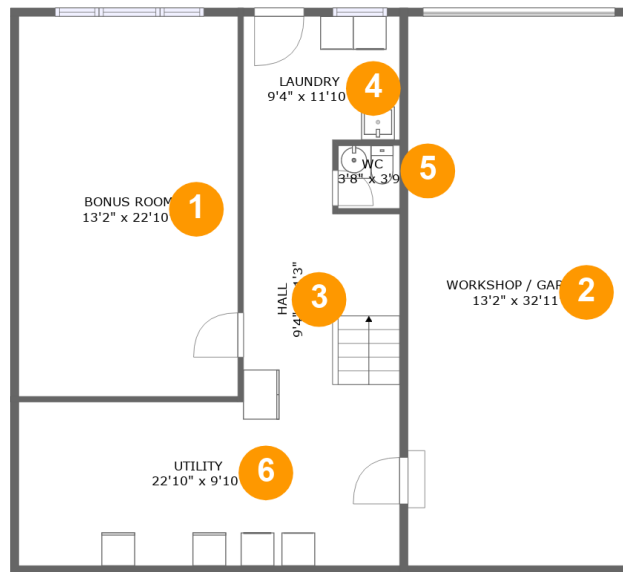
 **1** half baths

 **3** floors

 **3,320** Gross Living Area sqft

 **4,813** total sqft

## 2515 Sharmar Road, Cave Spring, Roanoke, Roanoke County, Virginia, United States, 24018



## Room Dimensions

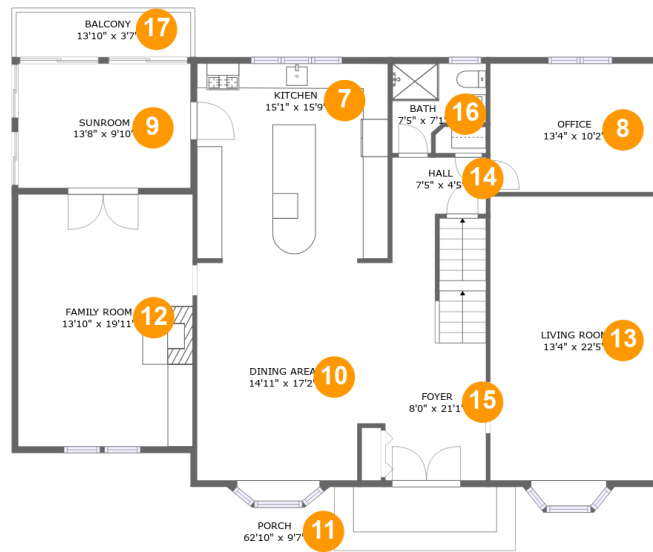
Floor 1

Total sqft: 1274

Living area: 330

#	Room name	Dimensions	Area (sqft)	Counted as Living Area
1	Bonus Room	13'2" x 22'10"	300 sq. ft	Yes
2	Workshop / Garage	13'2" x 32'11"	433 sq. ft	No
3	Hall	9'4" x 11'3"	106 sq. ft	No
4	Laundry	9'4" x 11'10"	93 sq. ft	No
5	Wc	3'8" x 3'9"	14 sq. ft	No
6	Utility	22'10" x 9'10"	224 sq. ft	No

# 2515 Sharmar Road, Cave Spring, Roanoke, Roanoke County, Virginia, United States, 24018



## Room Dimensions

Floor 2

Total sqft: 2265

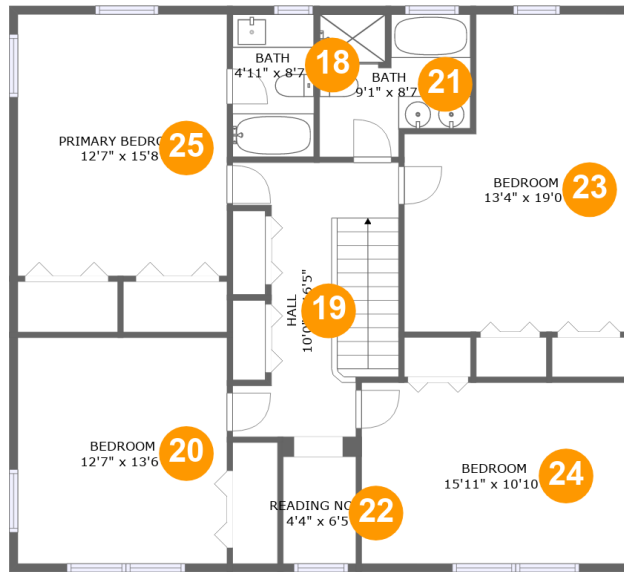
Living area: 1716

#	Room name	Dimensions	Area (sqft)	Counted as Living Area
7	Kitchen	15'1" x 15'9"	237 sq. ft	Yes
8	Office	13'4" x 10'2"	135 sq. ft	Yes
9	Sunroom	13'8" x 9'10"	134 sq. ft	Yes
10	Dining Area	14'11" x 17'2"	246 sq. ft	Yes
11	Porch	62'10" x 9'7"	500 sq. ft	No
12	Family Room	13'10" x 19'11"	275 sq. ft	Yes
13	Living Room	13'4" x 22'5"	299 sq. ft	Yes
14	Hall	7'5" x 4'5"	33 sq. ft	Yes
15	Foyer	8'0" x 21'1"	162 sq. ft	Yes
16	Bath	7'5" x 7'1"	42 sq. ft	Yes
17	Balcony	13'10" x 3'7"	49 sq. ft	No

Scan captured on Fri, 19 Jul 2024 21:54:25 GMT

Information is calculated by CubiCasa technology; deemed highly reliable but not guaranteed.

**2515 Sharmar Road, Cave Spring, Roanoke, Roanoke County, Virginia, United States, 24018**



**Room Dimensions**

**Floor 3**

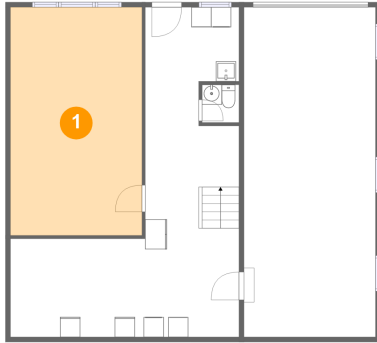
**Total sqft: 1274**

**Living area: 1274**

#	Room name	Dimensions	Area (sqft)	Counted as Living Area
18	Bath	4'11" x 8'7"	42 sq. ft	Yes
19	Hall	10'0" x 16'5"	130 sq. ft	Yes
20	Bedroom	12'7" x 13'6"	170 sq. ft	Yes
21	Bath	9'1" x 8'7"	69 sq. ft	Yes
22	Reading Nook	4'4" x 6'5"	28 sq. ft	Yes
23	Bedroom	13'4" x 19'0"	223 sq. ft	Yes
24	Bedroom	15'11" x 10'10"	173 sq. ft	Yes
25	Primary Bedroom	12'7" x 15'8"	197 sq. ft	Yes

# 2515 Sharmar Road, Cave Spring, Roanoke, Roanoke County, Virginia, United States, 24018

## 1 Floor 1 - Bonus Room



Dimensions: 13'2" x 22'10"  
Area: 300 sq. ft  
Counted as Living Area:  
Yes

Heated: Yes  
Finished: Yes  
Enclosed: Yes  
Contiguous:  
Yes  
Permitted: Yes  
Wet Space: No  
Addition: No  
Conversion: No

## 2 Floor 1 - Workshop / Garage

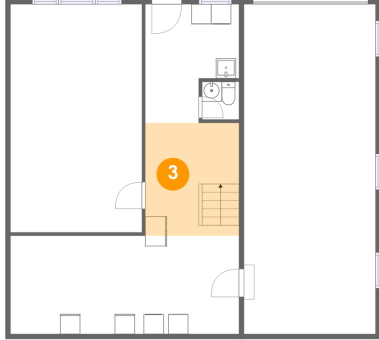


Dimensions: 13'2" x 32'11"  
Area: 433 sq. ft  
Counted as Living Area: No

Heated: No  
Finished: No  
Enclosed: Yes  
Contiguous: Yes  
Permitted: Yes  
Wet Space: No  
Addition: No  
Conversion: No

**2515 Sharmar Road, Cave Spring, Roanoke,  
Roanoke County, Virginia, United States, 24018**

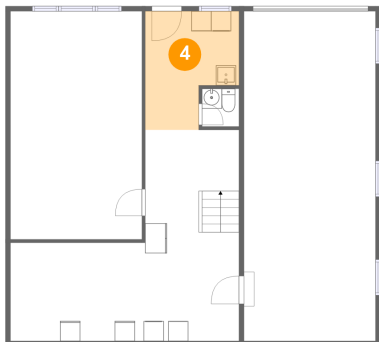
**3 Floor 1 - Hall**



Dimensions: 9'4" x 11'3"  
Area: 106 sq. ft  
Counted as Living Area: No

Heated: Yes  
Finished: No  
Enclosed: Yes  
Contiguous: Yes  
Permitted: Yes  
Wet Space: No  
Addition: No  
Conversion: No

**4 Floor 1 - Laundry**



Dimensions: 9'4" x 11'10"  
Area: 93 sq. ft  
Counted as Living Area: No

Heated: Yes  
Finished: No  
Enclosed: Yes  
Contiguous: Yes  
Permitted: Yes  
Wet Space: No  
Addition: No  
Conversion: No

**5 Floor 1 - Wc**

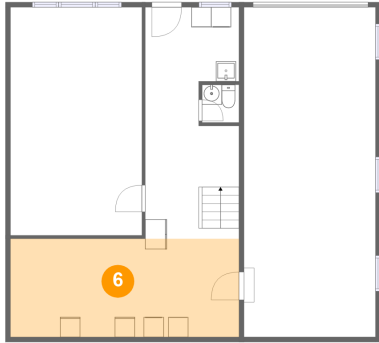


Dimensions: 3'8" x 3'9"  
Area: 14 sq. ft  
Counted as Living Area: No

Heated: Yes  
Finished: Yes  
Enclosed: Yes  
Contiguous: No  
Permitted: Yes  
Wet Space: Yes  
Addition: No  
Conversion: No

# 2515 Sharmar Road, Cave Spring, Roanoke, Roanoke County, Virginia, United States, 24018

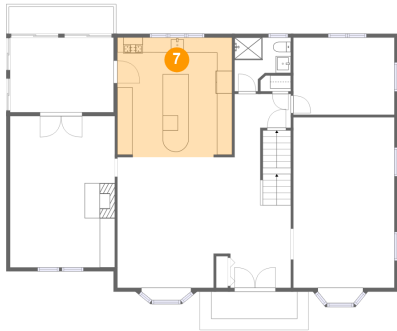
## 6 Floor 1 - Utility



Dimensions: 22'10" x 9'10"  
Area: 224 sq. ft  
Counted as Living Area: No

Heated: Yes  
Finished: Yes  
Enclosed: Yes  
Contiguous: No  
Permitted: Yes  
Wet Space: No  
Addition: No  
Conversion: No

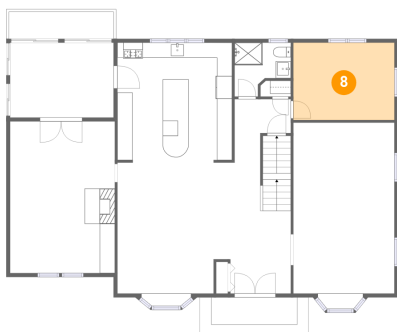
## 7 Floor 2 - Kitchen



Dimensions: 15'1" x 15'9"  
Area: 237 sq. ft  
Counted as Living Area:  
Yes

Heated: Yes  
Finished: Yes  
Enclosed: Yes  
Contiguous:  
Yes  
Permitted: Yes  
Wet Space: No  
Addition: No  
Conversion: No

## 8 Floor 2 - Office

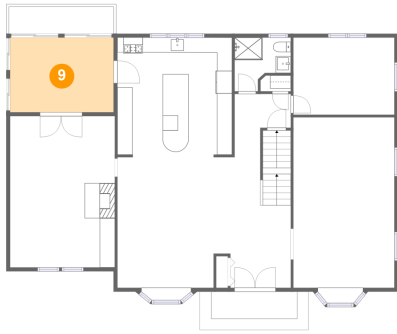


Dimensions: 13'4" x 10'2"  
Area: 135 sq. ft  
Counted as Living Area:  
Yes

Heated: Yes  
Finished: Yes  
Enclosed: Yes  
Contiguous:  
Yes  
Permitted: Yes  
Wet Space: No  
Addition: No  
Conversion: No

# 2515 Sharmar Road, Cave Spring, Roanoke, Roanoke County, Virginia, United States, 24018

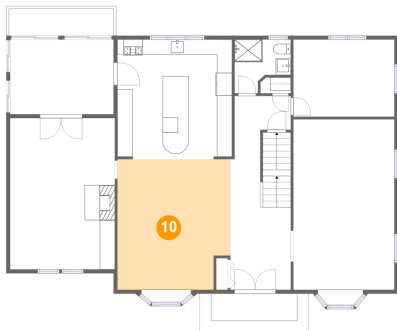
## 9 Floor 2 - Sunroom



Dimensions: 13'8" x 9'10"  
Area: 134 sq. ft  
Counted as Living Area:  
Yes

Heated: Yes  
Finished: Yes  
Enclosed: Yes  
Contiguous:  
Yes  
Permitted: Yes  
Wet Space: No  
Addition: No  
Conversion: No

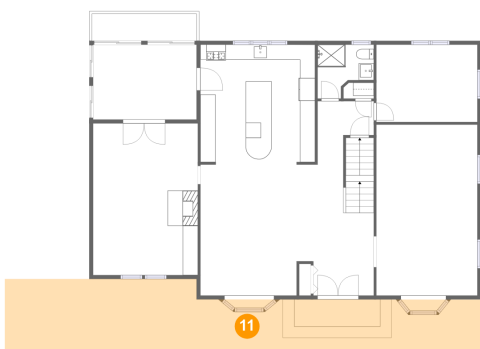
## 10 Floor 2 - Dining Area



Dimensions: 14'11" x 17'2"  
Area: 246 sq. ft  
Counted as Living Area:  
Yes

Heated: Yes  
Finished: Yes  
Enclosed: Yes  
Contiguous:  
Yes  
Permitted: Yes  
Wet Space: No  
Addition: No  
Conversion: No

## 11 Floor 2 - Porch



Dimensions: 62'10" x 9'7"  
Area: 500 sq. ft  
Counted as Living Area: No

Heated: No  
Finished: Yes  
Enclosed: No  
Contiguous: Yes  
Permitted: Yes  
Wet Space: No  
Addition: No  
Conversion: No



# 2515 Sharmar Road, Cave Spring, Roanoke, Roanoke County, Virginia, United States, 24018

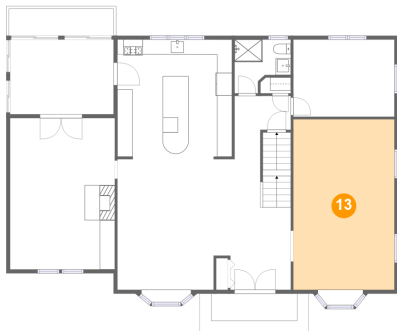
## 12 Floor 2 - Family Room



Dimensions: 13'10" x 19'11"  
Area: 275 sq. ft  
Counted as Living Area:  
Yes

Heated: Yes  
Finished: Yes  
Enclosed: Yes  
Contiguous:  
Yes  
Permitted: Yes  
Wet Space: No  
Addition: No  
Conversion: No

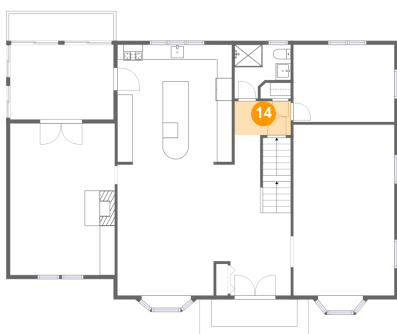
## 13 Floor 2 - Living Room



Dimensions: 13'4" x 22'5"  
Area: 299 sq. ft  
Counted as Living Area:  
Yes

Heated: Yes  
Finished: Yes  
Enclosed: Yes  
Contiguous:  
Yes  
Permitted: Yes  
Wet Space: No  
Addition: No  
Conversion: No

## 14 Floor 2 - Hall

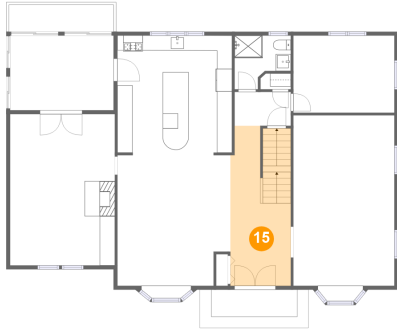


Dimensions: 7'5" x 4'5"  
Area: 33 sq. ft  
Counted as Living Area:  
Yes

Heated: Yes  
Finished: Yes  
Enclosed: Yes  
Contiguous:  
Yes  
Permitted: Yes  
Wet Space: No  
Addition: No  
Conversion: No

# 2515 Sharmar Road, Cave Spring, Roanoke, Roanoke County, Virginia, United States, 24018

## 15 Floor 2 - Foyer



Dimensions: 8'0" x 21'1"  
Area: 162 sq. ft  
Counted as Living Area:  
Yes

Heated: Yes  
Finished: Yes  
Enclosed: Yes  
Contiguous:  
Yes  
Permitted: Yes  
Wet Space: No  
Addition: No  
Conversion: No

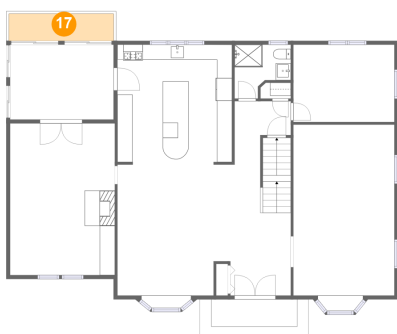
## 16 Floor 2 - Bath



Dimensions: 7'5" x 7'1"  
Area: 42 sq. ft  
Counted as Living Area:  
Yes

Heated: Yes  
Finished: Yes  
Enclosed: Yes  
Contiguous:  
Yes  
Permitted: Yes  
Wet Space: Yes  
Addition: No  
Conversion: No

## 17 Floor 2 - Balcony

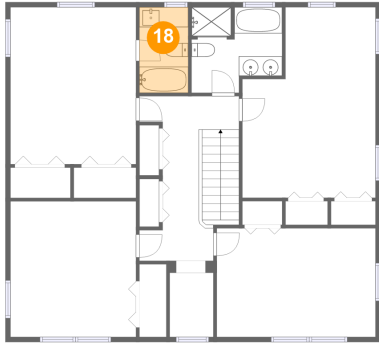


Dimensions: 13'10" x 3'7"  
Area: 49 sq. ft  
Counted as Living Area: No

Heated: No  
Finished: Yes  
Enclosed: No  
Contiguous: Yes  
Permitted: Yes  
Wet Space: No  
Addition: No  
Conversion: No

# 2515 Sharmar Road, Cave Spring, Roanoke, Roanoke County, Virginia, United States, 24018

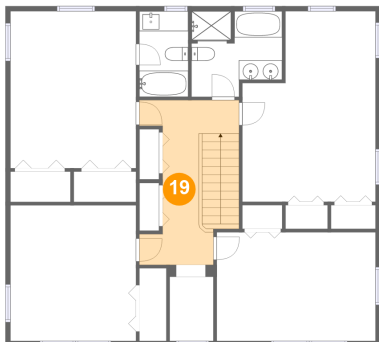
## 18 Floor 3 - Bath



Dimensions: 4'11" x 8'7"  
Area: 42 sq. ft  
Counted as Living Area:  
Yes

Heated: Yes  
Finished: Yes  
Enclosed: Yes  
Contiguous:  
Yes  
Permitted: Yes  
Wet Space: Yes  
Addition: No  
Conversion: No

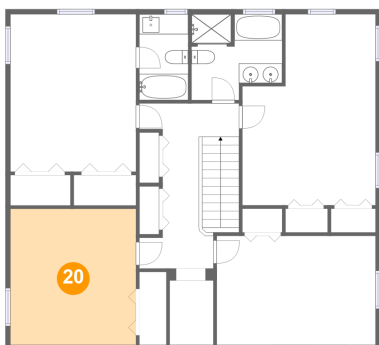
## 19 Floor 3 - Hall



Dimensions: 10'0" x 16'5"  
Area: 130 sq. ft  
Counted as Living Area:  
Yes

Heated: Yes  
Finished: Yes  
Enclosed: Yes  
Contiguous:  
Yes  
Permitted: Yes  
Wet Space: No  
Addition: No  
Conversion: No

## 20 Floor 3 - Bedroom

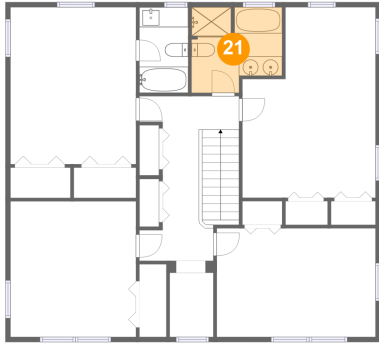


Dimensions: 12'7" x 13'6"  
Area: 170 sq. ft  
Counted as Living Area:  
Yes

Heated: Yes  
Finished: Yes  
Enclosed: Yes  
Contiguous:  
Yes  
Permitted: Yes  
Wet Space: No  
Addition: No  
Conversion: No

**2515 Sharmar Road, Cave Spring, Roanoke,  
Roanoke County, Virginia, United States, 24018**

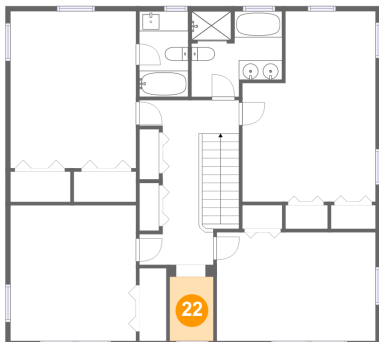
**21 Floor 3 - Bath**



Dimensions: 9'1" x 8'7"  
Area: 69 sq. ft  
Counted as Living Area:  
Yes

Heated: Yes  
Finished: Yes  
Enclosed: Yes  
Contiguous:  
Yes  
Permitted: Yes  
Wet Space: Yes  
Addition: No  
Conversion: No

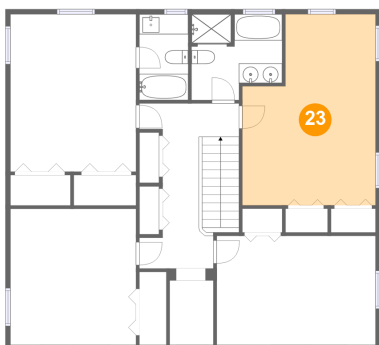
**22 Floor 3 - Reading Nook**



Dimensions: 4'4" x 6'5"  
Area: 28 sq. ft  
Counted as Living Area:  
Yes

Heated: Yes  
Finished: Yes  
Enclosed: Yes  
Contiguous:  
Yes  
Permitted: Yes  
Wet Space: No  
Addition: No  
Conversion: No

**23 Floor 3 - Bedroom**



Dimensions: 13'4" x 19'0"  
Area: 223 sq. ft  
Counted as Living Area:  
Yes

Heated: Yes  
Finished: Yes  
Enclosed: Yes  
Contiguous:  
Yes  
Permitted: Yes  
Wet Space: No  
Addition: No  
Conversion: No

**2515 Sharmar Road, Cave Spring, Roanoke,  
Roanoke County, Virginia, United States, 24018**

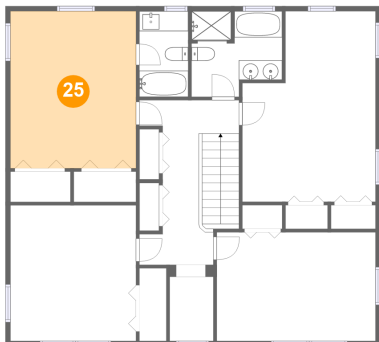
**24 Floor 3 - Bedroom**



**Dimensions:** 15'11" x 10'10"  
**Area:** 173 sq. ft  
**Counted as Living Area:**  
Yes

**Heated:** Yes  
**Finished:** Yes  
**Enclosed:** Yes  
**Contiguous:**  
Yes  
**Permitted:** Yes  
**Wet Space:** No  
**Addition:** No  
**Conversion:** No

**25 Floor 3 - Primary Bedroom**



**Dimensions:** 12'7" x 15'8"  
**Area:** 197 sq. ft  
**Counted as Living Area:**  
Yes

**Heated:** Yes  
**Finished:** Yes  
**Enclosed:** Yes  
**Contiguous:**  
Yes  
**Permitted:** Yes  
**Wet Space:** No  
**Addition:** No  
**Conversion:** No