

4612 Legacy Preserve Way SE, Ryland Acres, Brownsboro, Madison County, Alabama, United

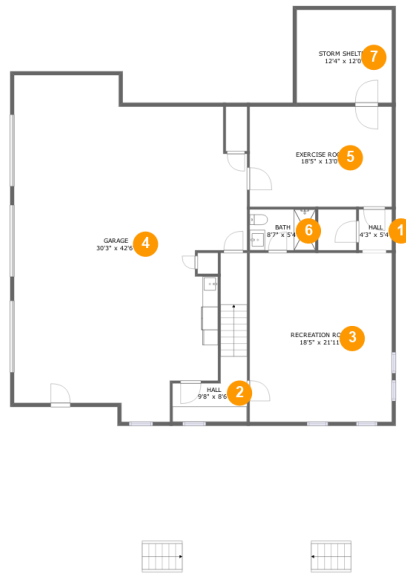


Property Summary

1 garages **4** bedrooms **4** bathrooms **1** half baths

3 floors **4,617** Gross Living Area sqft **7,193** total sqft

4612 Legacy Preserve Way SE, Ryland Acres, Brownsboro, Madison County, Alabama, United



Room Dimensions

Floor 1

Total sqft: 2285

Living area: 974

#	Room name	Dimensions	Area (sqft)	Counted as Living Area
1	Hall	4'3" x 5'4"	23 sq. ft	Yes
2	Hall	9'8" x 8'6"	106 sq. ft	No
3	Recreation Room	18'5" x 21'11"	404 sq. ft	Yes
4	Garage	30'3" x 42'6"	1110 sq. ft	No
5	Exercise Room	18'5" x 13'0"	239 sq. ft	Yes
6	Bath	8'7" x 5'4"	45 sq. ft	Yes
7	Storm Shelter	12'4" x 12'0"	148 sq. ft	Yes

4612 Legacy Preserve Way SE, Ryland Acres, Brownsboro, Madison County, Alabama, United



Room Dimensions

Floor 2

Total sqft: 3119

Living area: 2285

#	Room name	Dimensions	Area (sqft)	Counted as Living Area
8	Sunroom	12'4" x 12'2"	150 sq. ft	Yes
9	Hall	4'11" x 11'10"	50 sq. ft	Yes
10	Kitchen	12'4" x 17'10"	211 sq. ft	Yes
11	Dining Room	12'4" x 14'2"	167 sq. ft	Yes
12	Porch	35'5" x 8'7"	434 sq. ft	No
13	Living Room	22'4" x 17'10"	399 sq. ft	Yes
14	Primary Bedroom	13'7" x 18'1"	246 sq. ft	Yes
15	Foyer	9'6" x 22'9"	214 sq. ft	Yes
16	Hall	3'9" x 8'10"	33 sq. ft	Yes
17	W.i.c.	8'4" x 11'10"	98 sq. ft	Yes
18	Wc	4'0" x 8'3"	33 sq. ft	Yes

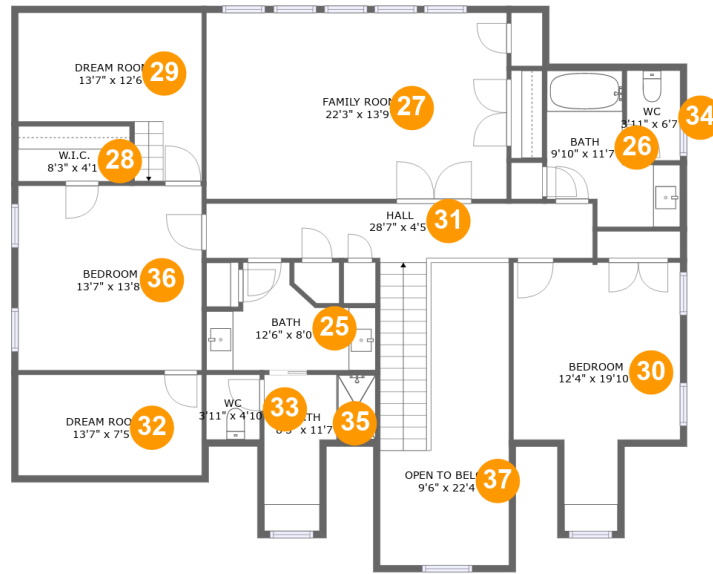
Scan captured on Sat, 29 Jun 2024 14:52:16 GMT

Information is calculated by CubiCasa technology; deemed highly reliable but not guaranteed.

4612 Legacy Preserve Way SE, Ryland Acres, Brownsboro, Madison County, Alabama, United

#	Room name	Dimensions	Area (sqft)	Counted as Living Area
19	Bulter Pantry	8'0" x 8'3"	66 sq. ft	Yes
20	Undefined	3'4" x 6'2"	20 sq. ft	Yes
21	Office	12'6" x 13'6"	169 sq. ft	Yes
22	Covered Patio	36'7" x 12'6"	400 sq. ft	No
23	Primary Bath	13'7" x 11'10"	138 sq. ft	Yes
24	Laundry	8'5" x 8'10"	65 sq. ft	Yes

4612 Legacy Preserve Way SE, Ryland Acres, Brownsboro, Madison County, Alabama, United



Room Dimensions

Floor 3

Total sqft: 1789

Living area: 1358

#	Room name	Dimensions	Area (sqft)	Counted as Living Area
25	Bath	12'6" x 8'0"	70 sq. ft	Yes
26	Bath	9'10" x 11'7"	76 sq. ft	Yes
27	Family Room	22'3" x 13'9"	306 sq. ft	Yes
28	W.i.c.	8'3" x 4'1"	34 sq. ft	Yes
29	Dream Room	13'7" x 12'6"	131 sq. ft	No
30	Bedroom	12'4" x 19'10"	188 sq. ft	Yes
31	Hall	28'7" x 4'5"	171 sq. ft	Yes
32	Dream Room	13'7" x 7'5"	65 sq. ft	No
33	Wc	3'11" x 4'10"	19 sq. ft	Yes
34	Wc	3'11" x 6'7"	26 sq. ft	Yes
35	Bath	8'3" x 11'7"	67 sq. ft	Yes

4612 Legacy Preserve Way SE, Ryland Acres, Brownsboro, Madison County, Alabama, United

#	Room name	Dimensions	Area (sqft)	Counted as Living Area
36	Bedroom	13'7" x 13'8"	185 sq. ft	Yes
37	Open To Below	9'6" x 22'4"	161 sq. ft	No

4612 Legacy Preserve Way SE, Ryland Acres, Brownsboro, Madison County, Alabama, United

1 Floor 1 - Hall



Dimensions: 4'3" x 5'4"
Area: 23 sq. ft
Counted as Living Area:
Yes

Heated: Yes
Finished: Yes
Enclosed: Yes
Contiguous:
Yes
Permitted: Yes
Wet Space: No
Addition: No
Conversion: No

2 Floor 1 - Hall

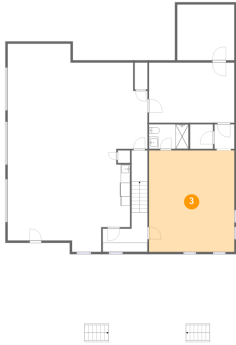


Dimensions: 9'8" x 8'6"
Area: 106 sq. ft
Counted as Living Area: No

Heated: Yes
Finished: Yes
Enclosed: Yes
Contiguous: Yes
Permitted: Yes
Wet Space: No
Addition: No
Conversion: No

4612 Legacy Preserve Way SE, Ryland Acres, Brownsboro, Madison County, Alabama, United

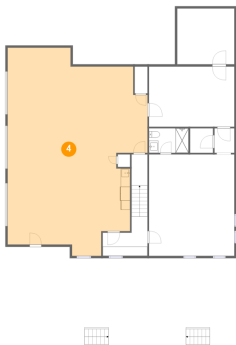
3 Floor 1 - Recreation Room



Dimensions: 18'5" x 21'11"
Area: 404 sq. ft
Counted as Living Area:
Yes

Heated: Yes
Finished: Yes
Enclosed: Yes
Contiguous:
Yes
Permitted: Yes
Wet Space: No
Addition: No
Conversion: No

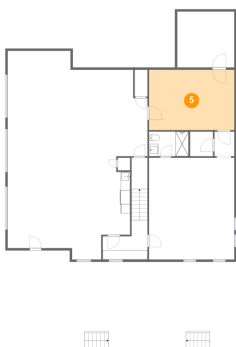
4 Floor 1 - Garage



Dimensions: 30'3" x 42'6"
Area: 1110 sq. ft
Counted as Living Area: No

Heated: No
Finished: No
Enclosed: Yes
Contiguous: Yes
Permitted: Yes
Wet Space: No
Addition: No
Conversion: No

5 Floor 1 - Exercise Room

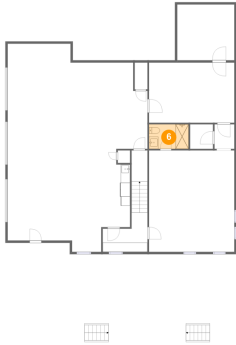


Dimensions: 18'5" x 13'0"
Area: 239 sq. ft
Counted as Living Area:
Yes

Heated: Yes
Finished: Yes
Enclosed: Yes
Contiguous:
Yes
Permitted: Yes
Wet Space: No
Addition: No
Conversion: No

4612 Legacy Preserve Way SE, Ryland Acres, Brownsboro, Madison County, Alabama, United

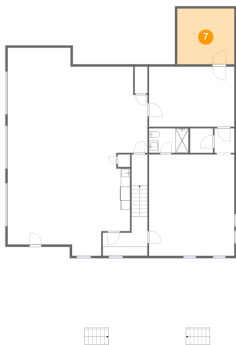
6 Floor 1 - Bath



Dimensions: 8'7" x 5'4"
Area: 45 sq. ft
Counted as Living Area:
Yes

Heated: Yes
Finished: Yes
Enclosed: Yes
Contiguous:
Yes
Permitted: Yes
Wet Space: Yes
Addition: No
Conversion: No

7 Floor 1 - Storm Shelter



Dimensions: 12'4" x 12'0"
Area: 148 sq. ft
Counted as Living Area:
Yes

Heated: Yes
Finished: Yes
Enclosed: Yes
Contiguous:
Yes
Permitted: Yes
Wet Space: No
Addition: No
Conversion: No

8 Floor 2 - Sunroom



Dimensions: 12'4" x 12'2"
Area: 150 sq. ft
Counted as Living Area:
Yes

Heated: Yes
Finished: Yes
Enclosed: Yes
Contiguous:
Yes
Permitted: Yes
Wet Space: No
Addition: No
Conversion: No

4612 Legacy Preserve Way SE, Ryland Acres, Brownsboro, Madison County, Alabama, United

9 Floor 2 - Hall



Dimensions: 4'11" x 11'10"
Area: 50 sq. ft
Counted as Living Area:
Yes

Heated: Yes
Finished: Yes
Enclosed: Yes
Contiguous:
Yes
Permitted: Yes
Wet Space: No
Addition: No
Conversion: No

10 Floor 2 - Kitchen



Dimensions: 12'4" x 17'10"
Area: 211 sq. ft
Counted as Living Area:
Yes

Heated: Yes
Finished: Yes
Enclosed: Yes
Contiguous:
Yes
Permitted: Yes
Wet Space: No
Addition: No
Conversion: No

11 Floor 2 - Dining Room



Dimensions: 12'4" x 14'2"
Area: 167 sq. ft
Counted as Living Area:
Yes

Heated: Yes
Finished: Yes
Enclosed: Yes
Contiguous:
Yes
Permitted: Yes
Wet Space: No
Addition: No
Conversion: No

4612 Legacy Preserve Way SE, Ryland Acres, Brownsboro, Madison County, Alabama, United

12 Floor 2 - Porch



Dimensions: 35'5" x 8'7"
Area: 434 sq. ft
Counted as Living Area: No

Heated: No
Finished: Yes
Enclosed: No
Contiguous: Yes
Permitted: Yes
Wet Space: No
Addition: No
Conversion: No

13 Floor 2 - Living Room



Dimensions: 22'4" x 17'10"
Area: 399 sq. ft
Counted as Living Area:
Yes

Heated: Yes
Finished: Yes
Enclosed: Yes
Contiguous:
Yes
Permitted: Yes
Wet Space: No
Addition: No
Conversion: No

14 Floor 2 - Primary Bedroom



Dimensions: 13'7" x 18'1"
Area: 246 sq. ft
Counted as Living Area:
Yes

Heated: Yes
Finished: Yes
Enclosed: Yes
Contiguous:
Yes
Permitted: Yes
Wet Space: No
Addition: No
Conversion: No

4612 Legacy Preserve Way SE, Ryland Acres, Brownsboro, Madison County, Alabama, United

15 Floor 2 - Foyer



Dimensions: 9'6" x 22'9"
Area: 214 sq. ft
Counted as Living Area:
Yes

Heated: Yes
Finished: Yes
Enclosed: Yes
Contiguous:
Yes
Permitted: Yes
Wet Space: No
Addition: No
Conversion: No

16 Floor 2 - Hall



Dimensions: 3'9" x 8'10"
Area: 33 sq. ft
Counted as Living Area:
Yes

Heated: Yes
Finished: Yes
Enclosed: Yes
Contiguous:
Yes
Permitted: Yes
Wet Space: No
Addition: No
Conversion: No

17 Floor 2 - W.i.c.



Dimensions: 8'4" x 11'10"
Area: 98 sq. ft
Counted as Living Area:
Yes

Heated: Yes
Finished: Yes
Enclosed: Yes
Contiguous:
Yes
Permitted: Yes
Wet Space: No
Addition: No
Conversion: No

4612 Legacy Preserve Way SE, Ryland Acres, Brownsboro, Madison County, Alabama, United

18 Floor 2 - Wc



Dimensions: 4'0" x 8'3"
Area: 33 sq. ft
Counted as Living Area:
Yes

Heated: Yes
Finished: Yes
Enclosed: Yes
Contiguous:
Yes
Permitted: Yes
Wet Space: Yes
Addition: No
Conversion: No

19 Floor 2 - Bulter Pantry



Dimensions: 8'0" x 8'3"
Area: 66 sq. ft
Counted as Living Area:
Yes

Heated: Yes
Finished: Yes
Enclosed: Yes
Contiguous:
Yes
Permitted: Yes
Wet Space: No
Addition: No
Conversion: No

20 Floor 2 - Undefined



Dimensions: 3'4" x 6'2"
Area: 20 sq. ft
Counted as Living Area:
Yes

Heated: Yes
Finished: Yes
Enclosed: Yes
Contiguous:
Yes
Permitted: Yes
Wet Space: Yes
Addition: No
Conversion: No

4612 Legacy Preserve Way SE, Ryland Acres, Brownsboro, Madison County, Alabama, United

21 Floor 2 - Office



Dimensions: 12'6" x 13'6"
Area: 169 sq. ft
Counted as Living Area:
Yes

Heated: Yes
Finished: Yes
Enclosed: Yes
Contiguous:
Yes
Permitted: Yes
Wet Space: No
Addition: No
Conversion: No

22 Floor 2 - Covered Patio



Dimensions: 36'7" x 12'6"
Area: 400 sq. ft
Counted as Living Area: No

Heated: No
Finished: Yes
Enclosed: No
Contiguous: Yes
Permitted: Yes
Wet Space: No
Addition: No
Conversion: No

23 Floor 2 - Primary Bath



Dimensions: 13'7" x 11'10"
Area: 138 sq. ft
Counted as Living Area:
Yes

Heated: Yes
Finished: Yes
Enclosed: Yes
Contiguous:
Yes
Permitted: Yes
Wet Space: Yes
Addition: No
Conversion: No

4612 Legacy Preserve Way SE, Ryland Acres, Brownsboro, Madison County, Alabama, United

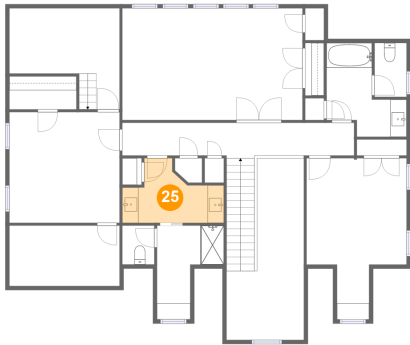
24 Floor 2 - Laundry



Dimensions: 8'5" x 8'10"
Area: 65 sq. ft
Counted as Living Area:
Yes

Heated: Yes
Finished: Yes
Enclosed: Yes
Contiguous:
Yes
Permitted: Yes
Wet Space: No
Addition: No
Conversion: No

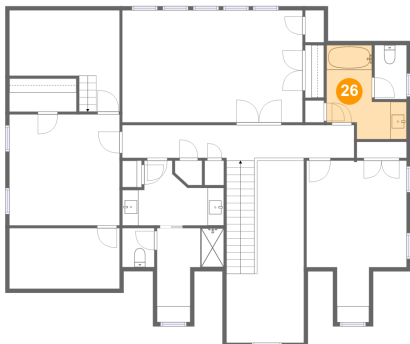
25 Floor 3 - Bath



Dimensions: 12'6" x 8'0"
Area: 70 sq. ft
Counted as Living Area:
Yes

Heated: Yes
Finished: Yes
Enclosed: Yes
Contiguous:
Yes
Permitted: Yes
Wet Space: Yes
Addition: No
Conversion: No

26 Floor 3 - Bath



Dimensions: 9'10" x 11'7"
Area: 76 sq. ft
Counted as Living Area:
Yes

Heated: Yes
Finished: Yes
Enclosed: Yes
Contiguous:
Yes
Permitted: Yes
Wet Space: Yes
Addition: No
Conversion: No

4612 Legacy Preserve Way SE, Ryland Acres, Brownsboro, Madison County, Alabama, United

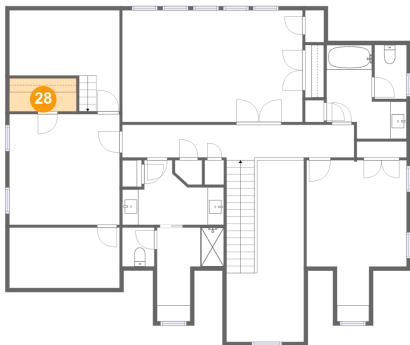
27 Floor 3 - Family Room



Dimensions: 22'3" x 13'9"
Area: 306 sq. ft
Counted as Living Area:
Yes

Heated: Yes
Finished: Yes
Enclosed: Yes
Contiguous:
Yes
Permitted: Yes
Wet Space: No
Addition: No
Conversion: No

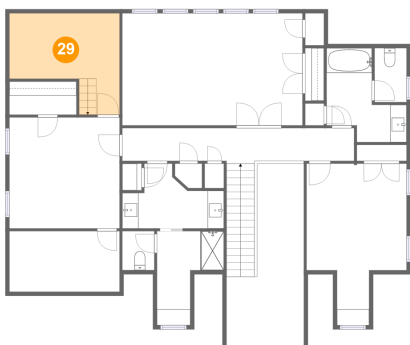
28 Floor 3 - W.i.c.



Dimensions: 8'3" x 4'1"
Area: 34 sq. ft
Counted as Living Area:
Yes

Heated: Yes
Finished: Yes
Enclosed: Yes
Contiguous:
Yes
Permitted: Yes
Wet Space: No
Addition: No
Conversion: No

29 Floor 3 - Dream Room

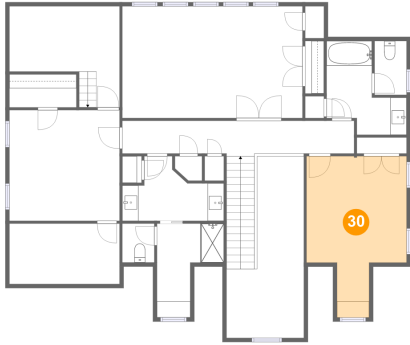


Dimensions: 13'7" x 12'6"
Area: 131 sq. ft
Counted as Living Area: No

Heated: Yes
Finished: Yes
Enclosed: Yes
Contiguous: Yes
Permitted: Yes
Wet Space: No
Addition: No
Conversion: No

4612 Legacy Preserve Way SE, Ryland Acres, Brownsboro, Madison County, Alabama, United

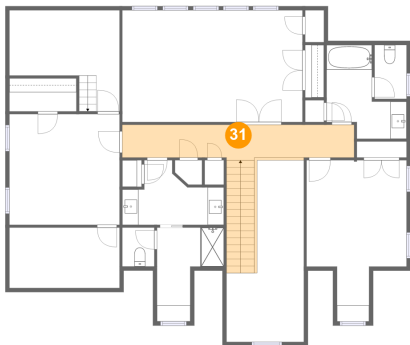
30 Floor 3 - Bedroom



Dimensions: 12'4" x 19'10"
Area: 188 sq. ft
Counted as Living Area:
Yes

Heated: Yes
Finished: Yes
Enclosed: Yes
Contiguous:
Yes
Permitted: Yes
Wet Space: No
Addition: No
Conversion: No

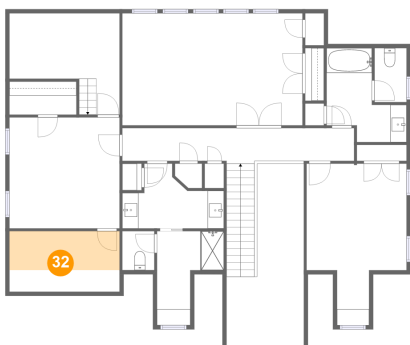
31 Floor 3 - Hall



Dimensions: 28'7" x 4'5"
Area: 171 sq. ft
Counted as Living Area:
Yes

Heated: Yes
Finished: Yes
Enclosed: Yes
Contiguous:
Yes
Permitted: Yes
Wet Space: No
Addition: No
Conversion: No

32 Floor 3 - Dream Room

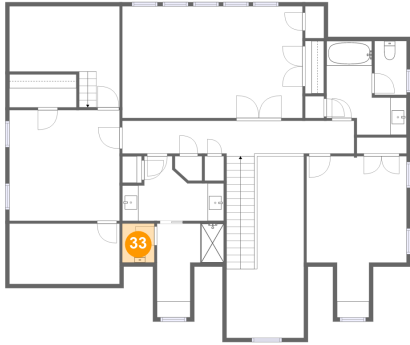


Dimensions: 13'7" x 7'5"
Area: 65 sq. ft
Counted as Living Area: No

Heated: Yes
Finished: Yes
Enclosed: Yes
Contiguous: Yes
Permitted: Yes
Wet Space: No
Addition: No
Conversion: No

4612 Legacy Preserve Way SE, Ryland Acres, Brownsboro, Madison County, Alabama, United

33 Floor 3 - Wc



Dimensions: 3'11" x 4'10"
Area: 19 sq. ft
Counted as Living Area:
Yes

Heated: Yes
Finished: Yes
Enclosed: Yes
Contiguous:
Yes
Permitted: Yes
Wet Space: Yes
Addition: No
Conversion: No

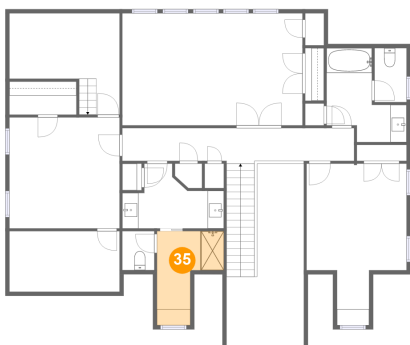
34 Floor 3 - Wc



Dimensions: 3'11" x 6'7"
Area: 26 sq. ft
Counted as Living Area:
Yes

Heated: Yes
Finished: Yes
Enclosed: Yes
Contiguous:
Yes
Permitted: Yes
Wet Space: Yes
Addition: No
Conversion: No

35 Floor 3 - Bath

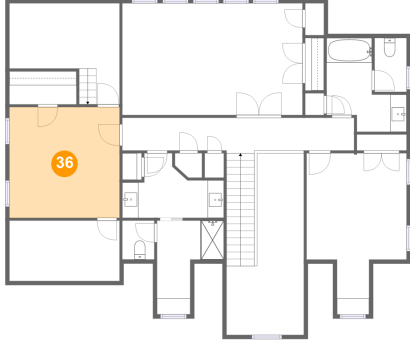


Dimensions: 8'3" x 11'7"
Area: 67 sq. ft
Counted as Living Area:
Yes

Heated: Yes
Finished: Yes
Enclosed: Yes
Contiguous:
Yes
Permitted: Yes
Wet Space: Yes
Addition: No
Conversion: No

4612 Legacy Preserve Way SE, Ryland Acres, Brownsboro, Madison County, Alabama, United

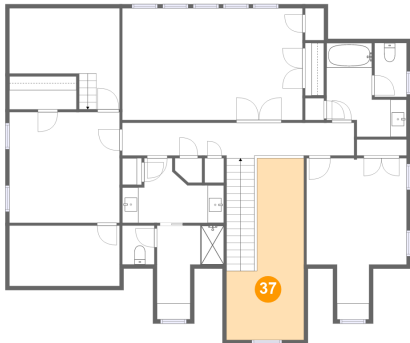
36 Floor 3 - Bedroom



Dimensions: 13'7" x 13'8"
Area: 185 sq. ft
Counted as Living Area:
Yes

Heated: Yes
Finished: Yes
Enclosed: Yes
Contiguous:
Yes
Permitted: Yes
Wet Space: No
Addition: No
Conversion: No

37 Floor 3 - Open To Below



Dimensions: 9'6" x 22'4"
Area: 161 sq. ft
Counted as Living Area: No

Heated: No
Finished: No
Enclosed: No
Contiguous: Yes
Permitted: No
Wet Space: No
Addition: No
Conversion: No