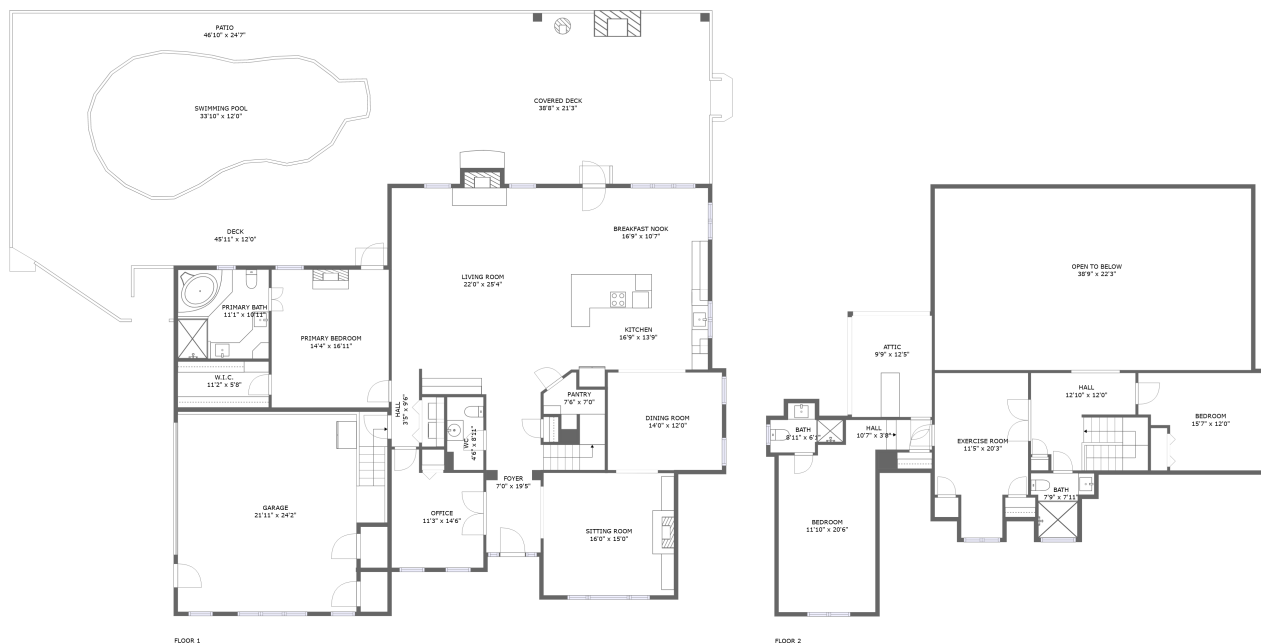


## Home report

812 Scott Circle, Hillcrest Heights, Salem, Salem city, Virginia,  
United States, 24153



**Total Area: 3263 sq. ft**

Floor 1: 2294 sq. ft, Floor 2: 969 sq. ft

Excluded: Garage 589 sq. ft, Patio 637 sq. ft, Covered deck 831 sq. ft, Deck 490 sq. ft, Fireplace 11 sq. ft, Attic 125 sq. ft, Open to below 864 sq. ft, Walls: 278 sq. ft

## Property summary



Home report

**812 Scott Circle, Hillcrest Heights, Salem, Salem city, Virginia,  
United States, 24153**



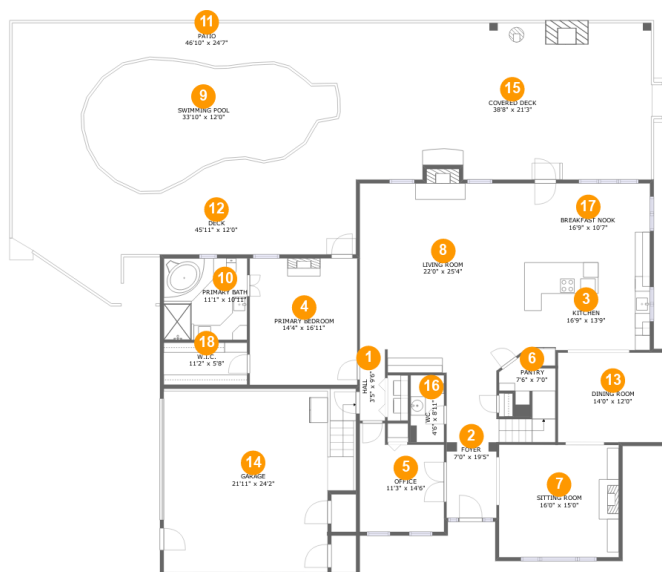
**1**  
Half baths



**1**  
Garages

## Home report

812 Scott Circle, Hillcrest Heights, Salem, Salem city, Virginia, United States, 24153



## Room dimensions

Floor 1

Total:2294sqft

Excluded: 2558sqft

#		Max Dimensions	sqft	Included
1	Hall	3'5" x 9'6"	32 sq. ft	Yes
2	Foyer	7'0" x 19'5"	141 sq. ft	Yes
3	Kitchen	16'9" x 13'9"	203 sq. ft	Yes
4	Primary Bedroom	14'4" x 16'11"	243 sq. ft	Yes
5	Office	11'3" x 14'6"	141 sq. ft	Yes
6	Pantry	7'6" x 7'0"	58 sq. ft	Yes
7	Sitting Room	16'0" x 15'0"	240 sq. ft	Yes
8	Living Room	22'0" x 25'4"	548 sq. ft	Yes
9	Swimming Pool	33'10" x 12'0"	416 sq. ft	No
10	Primary Bath	11'1" x 10'11"	122 sq. ft	Yes
11	Patio	46'10" x 24'7"	1053 sq. ft	No

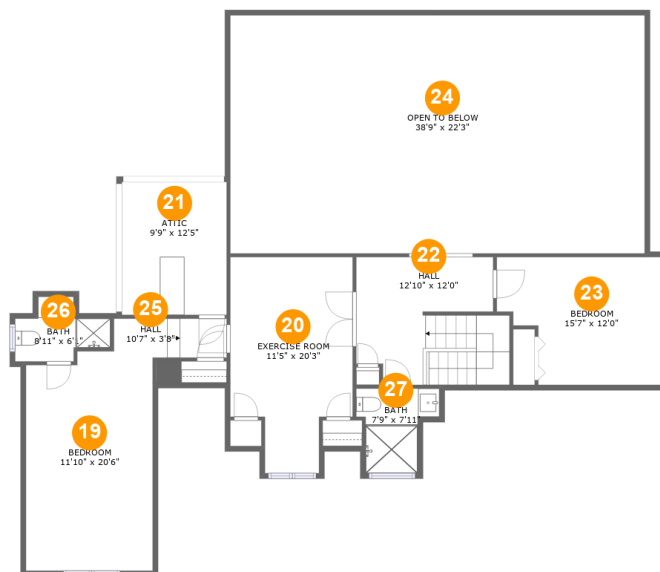
Home report

**812 Scott Circle, Hillcrest Heights, Salem, Salem city, Virginia,  
United States, 24153**

#		Max Dimensions	sqft	Included
12	Deck	45'11" x 12'0"	490 sq. ft	No
13	Dining Room	14'0" x 12'0"	168 sq. ft	Yes
14	Garage	21'11" x 24'2"	589 sq. ft	No
15	Covered Deck	38'8" x 21'3"	830 sq. ft	No
16	WC	4'6" x 8'11"	40 sq. ft	Yes
17	Breakfast Nook	16'9" x 10'7"	177 sq. ft	Yes
18	W.I.C.	11'2" x 5'8"	63 sq. ft	Yes

Home report

812 Scott Circle, Hillcrest Heights, Salem, Salem city, Virginia, United States, 24153



## Room dimensions

Floor 2

Total:969sqft

Excluded: 989sqft

#		Max Dimensions	sqft	Included
19	Bedroom	11'10" x 20'6"	236 sq. ft	Yes
20	Exercise Room	11'5" x 20'3"	198 sq. ft	Yes
21	Attic	9'9" x 12'5"	122 sq. ft	No
22	Hall	12'10" x 12'0"	158 sq. ft	Yes
23	Bedroom	15'7" x 12'0"	162 sq. ft	Yes
24	Open To Below	38'9" x 22'3"	864 sq. ft	No
25	Hall	10'7" x 3'8"	38 sq. ft	Yes
26	Bath	8'11" x 6'1"	38 sq. ft	Yes
27	Bath	7'9" x 7'11"	46 sq. ft	Yes

812 Scott Circle, Hillcrest Heights, Salem, Salem city, Virginia,  
United States, 24153

## 1 Floor 1 - Hall



**Max Dimensions:** 3'5" x 9'6"  
**Calculated Area:** 32 sq. ft  
**Included:** Yes

**Heated:** Yes  
**Finished:** Yes  
**Enclosed:** Yes  
**Contiguous:** Yes  
**Permitted:** Yes  
**Wet space:** No  
**Addition:** No  
**Conversion:** No

## 2 Floor 1 - Foyer

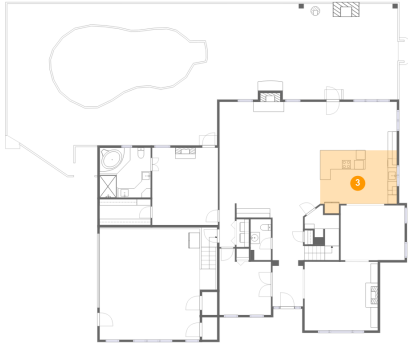


**Max Dimensions:** 7'0" x  
19'5"  
**Calculated Area:** 141 sq. ft  
**Included:** Yes

**Heated:** Yes  
**Finished:** Yes  
**Enclosed:** Yes  
**Contiguous:**  
Yes  
**Permitted:** Yes  
**Wet space:** No  
**Addition:** No  
**Conversion:** No

812 Scott Circle, Hillcrest Heights, Salem, Salem city, Virginia,  
United States, 24153

### 3 Floor 1 - Kitchen



Max Dimensions: 16'9" x 13'9"  
Calculated Area: 203 sq. ft  
Included: Yes

Heated: Yes  
Finished: Yes  
Enclosed: Yes  
Contiguous: Yes  
Permitted: Yes  
Wet space: No  
Addition: No  
Conversion: No

### 4 Floor 1 - Primary Bedroom



Max Dimensions: 14'4" x 16'11"  
Calculated Area: 243 sq. ft  
Included: Yes

Heated: Yes  
Finished: Yes  
Enclosed: Yes  
Contiguous: Yes  
Permitted: Yes  
Wet space: No  
Addition: No  
Conversion: No

### 5 Floor 1 - Office



Max Dimensions: 11'3" x 14'6"  
Calculated Area: 141 sq. ft  
Included: Yes

Heated: Yes  
Finished: Yes  
Enclosed: Yes  
Contiguous: Yes  
Permitted: Yes  
Wet space: No  
Addition: No  
Conversion: No

812 Scott Circle, Hillcrest Heights, Salem, Salem city, Virginia,  
United States, 24153

## 6 Floor 1 - Pantry



Max Dimensions: 7'6" x 7'0"  
Calculated Area: 58 sq. ft  
Included: Yes

Heated: Yes  
Finished: Yes  
Enclosed: Yes  
Contiguous: Yes  
Permitted: Yes  
Wet space: No  
Addition: No  
Conversion: No

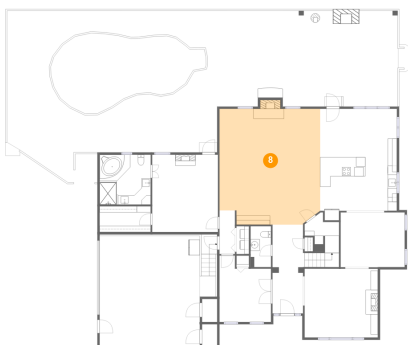
## 7 Floor 1 - Sitting Room



Max Dimensions: 16'0" x  
15'0"  
Calculated Area: 240 sq. ft  
Included: Yes

Heated: Yes  
Finished: Yes  
Enclosed: Yes  
Contiguous:  
Yes  
Permitted: Yes  
Wet space: No  
Addition: No  
Conversion: No

## 8 Floor 1 - Living Room



Max Dimensions: 22'0" x  
25'4"  
Calculated Area: 548 sq. ft  
Included: Yes

Heated: Yes  
Finished: Yes  
Enclosed: Yes  
Contiguous:  
Yes  
Permitted: Yes  
Wet space: No  
Addition: No  
Conversion: No

812 Scott Circle, Hillcrest Heights, Salem, Salem city, Virginia,  
United States, 24153

### 9 Floor 1 - Swimming Pool



Max Dimensions: 33'10" x  
12'0"  
Calculated Area: 416 sq. ft  
Included: No

Heated: No  
Finished: No  
Enclosed: No  
Contiguous:  
Yes  
Permitted: No  
Wet space: No  
Addition: No  
Conversion: No

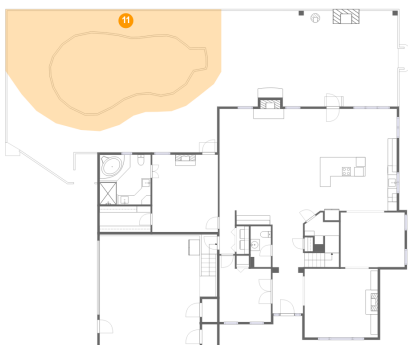
### 10 Floor 1 - Primary Bath



Max Dimensions: 11'1" x  
10'11"  
Calculated Area: 122 sq. ft  
Included: Yes

Heated: Yes  
Finished: Yes  
Enclosed: Yes  
Contiguous:  
Yes  
Permitted: Yes  
Wet space: Yes  
Addition: No  
Conversion: No

### 11 Floor 1 - Patio



Max Dimensions: 46'10" x  
24'7"  
Calculated Area: 1053 sq. ft  
Included: No

Heated: No  
Finished: Yes  
Enclosed: No  
Contiguous:  
Yes  
Permitted: Yes  
Wet space: No  
Addition: No  
Conversion: No

812 Scott Circle, Hillcrest Heights, Salem, Salem city, Virginia,  
United States, 24153

**12** Floor 1 - Deck



Max Dimensions: 45'11" x 12'0"  
Calculated Area: 490 sq. ft  
Included: No

Heated: No  
Finished: Yes  
Enclosed: No  
Contiguous: Yes  
Permitted: Yes  
Wet space: No  
Addition: No  
Conversion: No

**13** Floor 1 - Dining Room



Max Dimensions: 14'0" x 12'0"  
Calculated Area: 168 sq. ft  
Included: Yes

Heated: Yes  
Finished: Yes  
Enclosed: Yes  
Contiguous: Yes  
Permitted: Yes  
Wet space: No  
Addition: No  
Conversion: No

**14** Floor 1 - Garage



Max Dimensions: 21'11" x 24'2"  
Calculated Area: 589 sq. ft  
Included: No

Heated: No  
Finished: No  
Enclosed: Yes  
Contiguous: Yes  
Permitted: Yes  
Wet space: No  
Addition: No  
Conversion: No

812 Scott Circle, Hillcrest Heights, Salem, Salem city, Virginia,  
United States, 24153

**15** Floor 1 - Covered Deck



Max Dimensions: 38'8" x 21'3"  
Calculated Area: 830 sq. ft  
Included: No

Heated: No  
Finished: Yes  
Enclosed: No  
Contiguous: Yes  
Permitted: Yes  
Wet space: No  
Addition: No  
Conversion: No

**16** Floor 1 - WC



Max Dimensions: 4'6" x 8'11"  
Calculated Area: 40 sq. ft  
Included: Yes

Heated: Yes  
Finished: Yes  
Enclosed: Yes  
Contiguous: Yes  
Permitted: Yes  
Wet space: Yes  
Addition: No  
Conversion: No

**17** Floor 1 - Breakfast Nook



Max Dimensions: 16'9" x 10'7"  
Calculated Area: 177 sq. ft  
Included: Yes

Heated: Yes  
Finished: Yes  
Enclosed: Yes  
Contiguous: Yes  
Permitted: Yes  
Wet space: No  
Addition: No  
Conversion: No

812 Scott Circle, Hillcrest Heights, Salem, Salem city, Virginia,  
United States, 24153

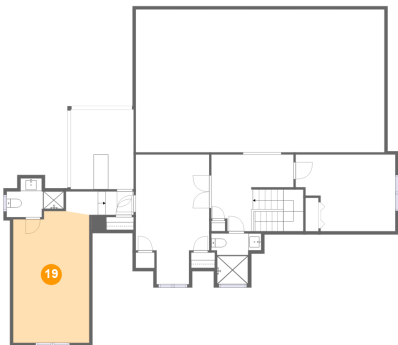
**18** Floor 1 - W.I.C.



Max Dimensions: 11'2" x 5'8"  
Calculated Area: 63 sq. ft  
Included: Yes

Heated: Yes  
Finished: Yes  
Enclosed: Yes  
Contiguous: Yes  
Permitted: Yes  
Wet space: No  
Addition: No  
Conversion: No

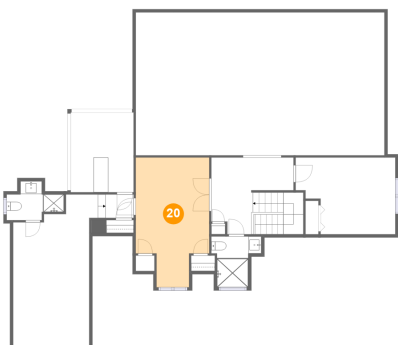
**19** Floor 2 - Bedroom



Max Dimensions: 11'10" x 20'6"  
Calculated Area: 236 sq. ft  
Included: Yes

Heated: Yes  
Finished: Yes  
Enclosed: Yes  
Contiguous: Yes  
Permitted: Yes  
Wet space: No  
Addition: No  
Conversion: No

**20** Floor 2 - Exercise Room

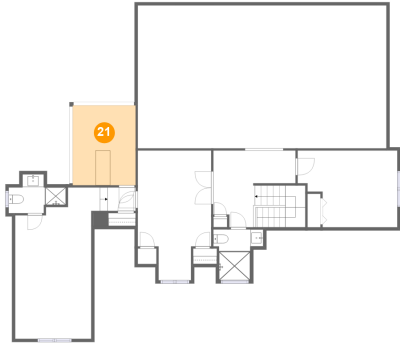


Max Dimensions: 11'5" x 20'3"  
Calculated Area: 198 sq. ft  
Included: Yes

Heated: Yes  
Finished: Yes  
Enclosed: Yes  
Contiguous: Yes  
Permitted: Yes  
Wet space: No  
Addition: No  
Conversion: No

812 Scott Circle, Hillcrest Heights, Salem, Salem city, Virginia,  
United States, 24153

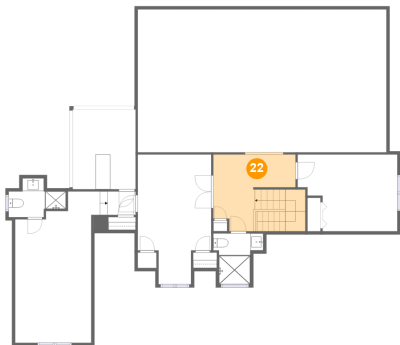
**21** Floor 2 - Attic



Max Dimensions: 9'9" x  
12'5"  
Calculated Area: 122 sq. ft  
Included: No

Heated: No  
Finished: No  
Enclosed: Yes  
Contiguous:  
Yes  
Permitted: Yes  
Wet space: No  
Addition: No  
Conversion: No

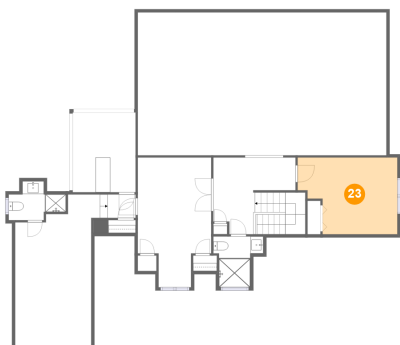
**22** Floor 2 - Hall



Max Dimensions: 12'10" x  
12'0"  
Calculated Area: 158 sq. ft  
Included: Yes

Heated: Yes  
Finished: Yes  
Enclosed: Yes  
Contiguous:  
Yes  
Permitted: Yes  
Wet space: No  
Addition: No  
Conversion: No

**23** Floor 2 - Bedroom

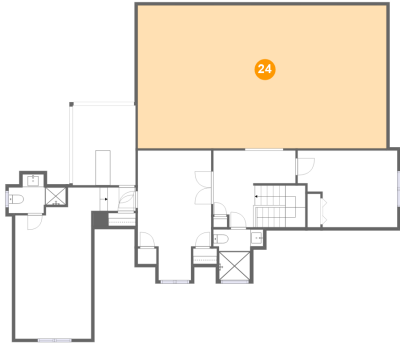


Max Dimensions: 15'7" x  
12'0"  
Calculated Area: 162 sq. ft  
Included: Yes

Heated: Yes  
Finished: Yes  
Enclosed: Yes  
Contiguous:  
Yes  
Permitted: Yes  
Wet space: No  
Addition: No  
Conversion: No

812 Scott Circle, Hillcrest Heights, Salem, Salem city, Virginia,  
United States, 24153

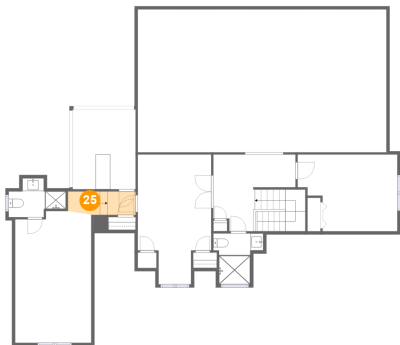
**24** Floor 2 - Open To Below



Max Dimensions: 38'9" x 22'3"  
Calculated Area: 864 sq. ft  
Included: No

Heated: No  
Finished: No  
Enclosed: No  
Contiguous: Yes  
Permitted: No  
Wet space: No  
Addition: No  
Conversion: No

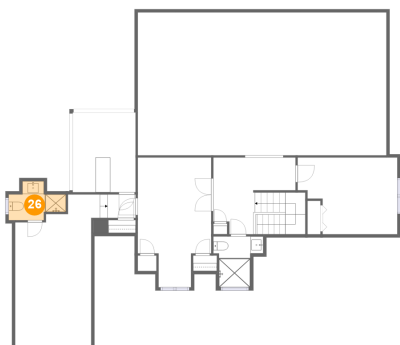
**25** Floor 2 - Hall



Max Dimensions: 10'7" x 3'8"  
Calculated Area: 38 sq. ft  
Included: Yes

Heated: Yes  
Finished: Yes  
Enclosed: Yes  
Contiguous: Yes  
Permitted: Yes  
Wet space: No  
Addition: No  
Conversion: No

**26** Floor 2 - Bath



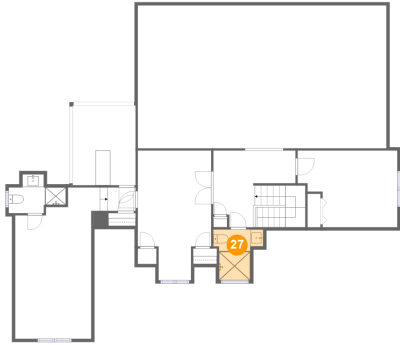
Max Dimensions: 8'11" x 6'1"  
Calculated Area: 38 sq. ft  
Included: Yes

Heated: Yes  
Finished: Yes  
Enclosed: Yes  
Contiguous: Yes  
Permitted: Yes  
Wet space: Yes  
Addition: No  
Conversion: No

Home report

812 Scott Circle, Hillcrest Heights, Salem, Salem city, Virginia,  
United States, 24153

**27** Floor 2 - Bath



Max Dimensions: 7'9" x  
7'11"  
Calculated Area: 46 sq. ft  
Included: Yes

Heated: Yes  
Finished: Yes  
Enclosed: Yes  
Contiguous:  
Yes  
Permitted: Yes  
Wet space: Yes  
Addition: No  
Conversion: No