



## Measurement Report

Measurement Date	February 7, 2025
Client Name	Stephen Lau - RE/MAX Real Estate
Property Address	4615 25 Ave NW, Edmonton, AB
Property Type	Single Family
Exterior Wall Thickness	6.5"
Measurement Equipment	Laser

## Floor Area Totals

	Level	Metric (m <sup>2</sup> )	Imperial (ft <sup>2</sup> )
Main Floor	1	69.16	744.44
Second Floor	2	66.54	716.28
Basement	B	58.05	624.88
<b>Total Above Ground RMS Area</b>		<b>135.70</b>	<b>1460.72</b>

## Room Dimensions

	Level	Metric (m)	Imperial (ft)
Living Room	1	6.01 x 3.79	19'9" x 12'5"
Dining Room	1	2.61 x 3.24	8'7" x 10'8"
Kitchen	1	3.78 x 3.24	12'5" x 10'8"
Primary Bedroom	2	3.95 x 3.91	12'12" x 12'10"
Bedroom 2	2	2.88 x 2.88	9'5" x 9'5"
Bedroom 3	2	3.25 x 2.92	10'8" x 9'7"
Family Room	B	9.15 x 5.40	30'0" x 17'9"
Garage Door		2.16 x 4.88	7'1" x 16'0"
Garage		6.43 x 6.09	21'1" x 19'12"

## Bathroom Count

	Level	Pieces
Bathroom 1	1	2
Bathroom 2	2	4
Bathroom 3	2	4
Bathroom 4	B	2

### Measuring Process

Measurements have been completed and verified using the RMS guidelines. Measurements were obtained using lasers for the interior areas.

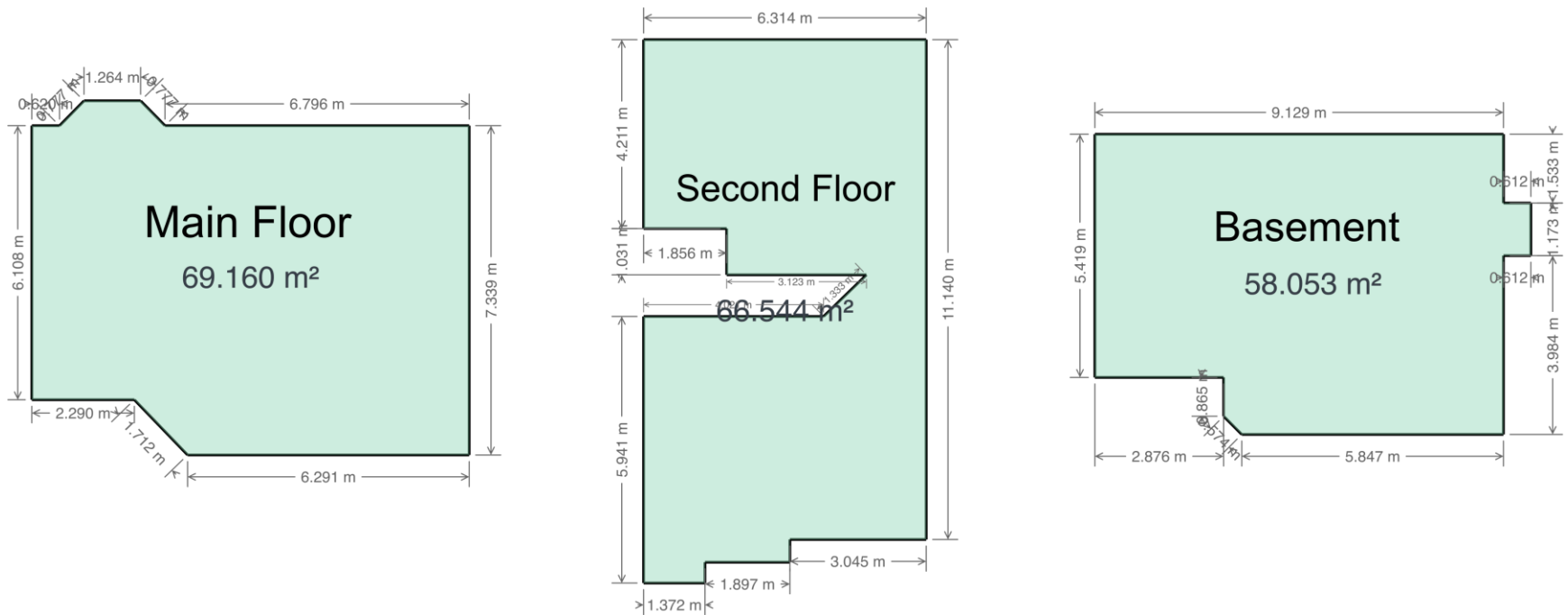
Room dimensions are largest length and width; parts of room may be smaller. Room area is not always equal to product of length and width.

587-566-6774

info@jcvisuals.ca

www.jcvisuals.ca

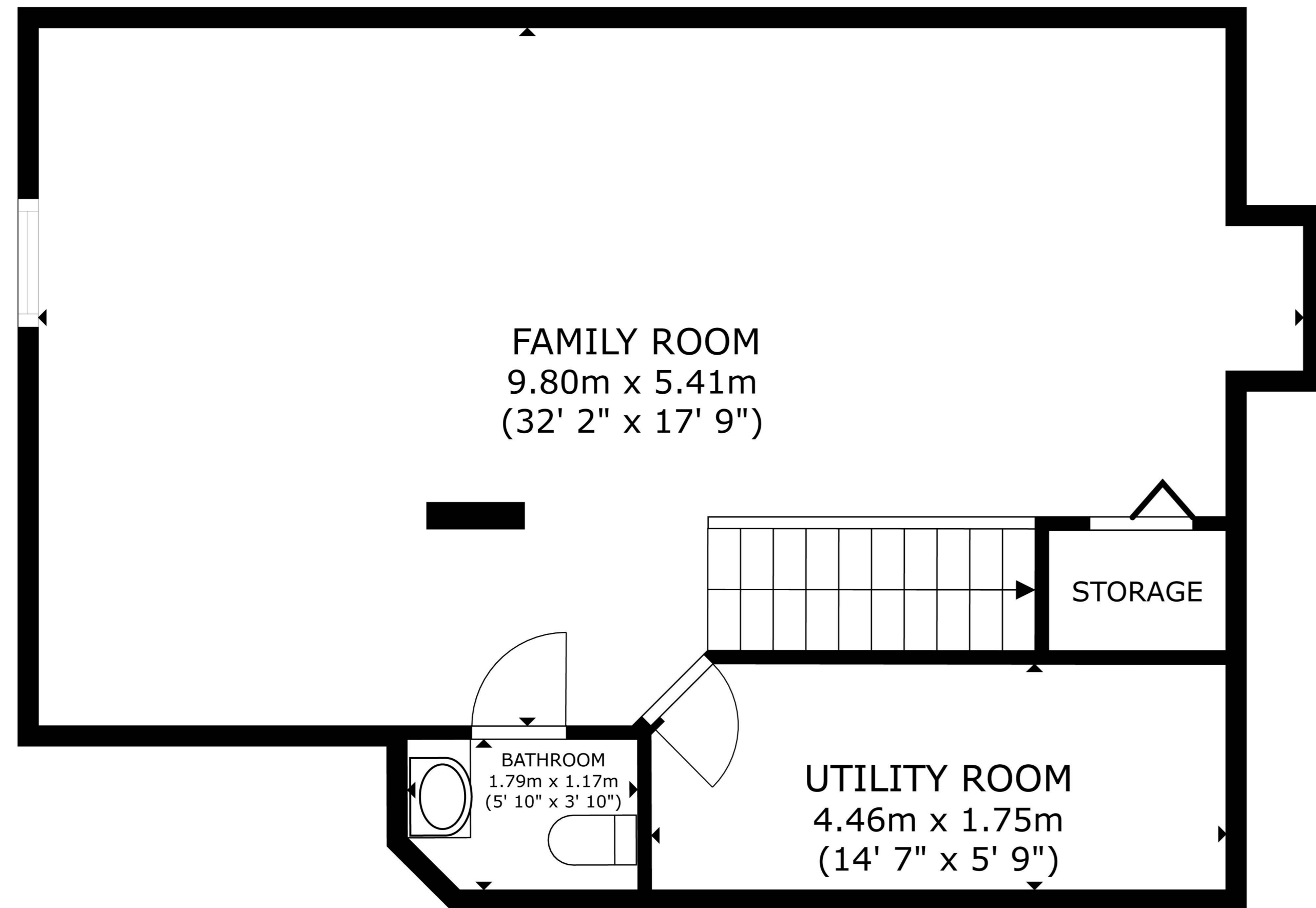
## Schematics



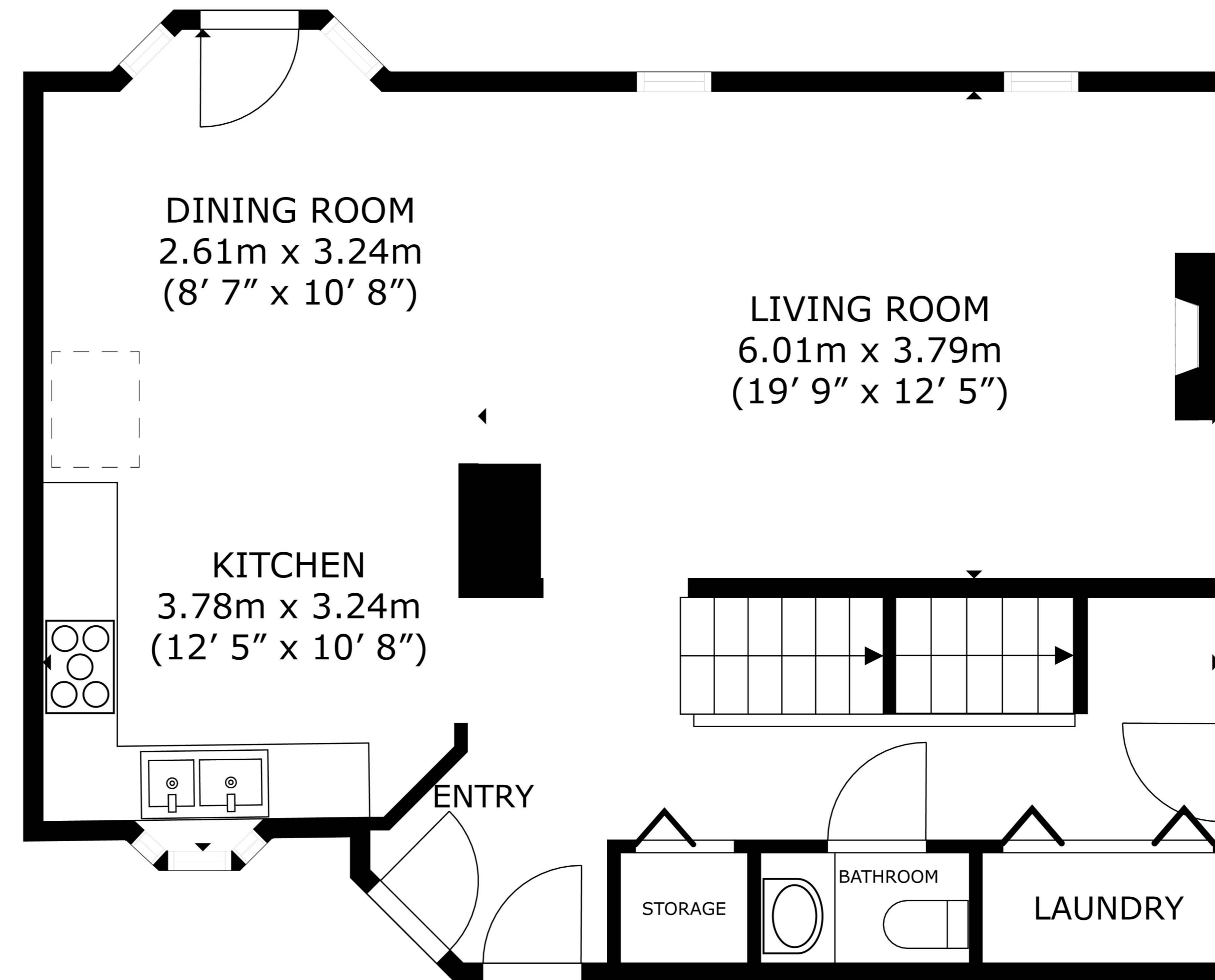
**4615 25 AVE NW**  
EDMONTON, AB

EXTERIOR WALL THICKNESS: 6.5"

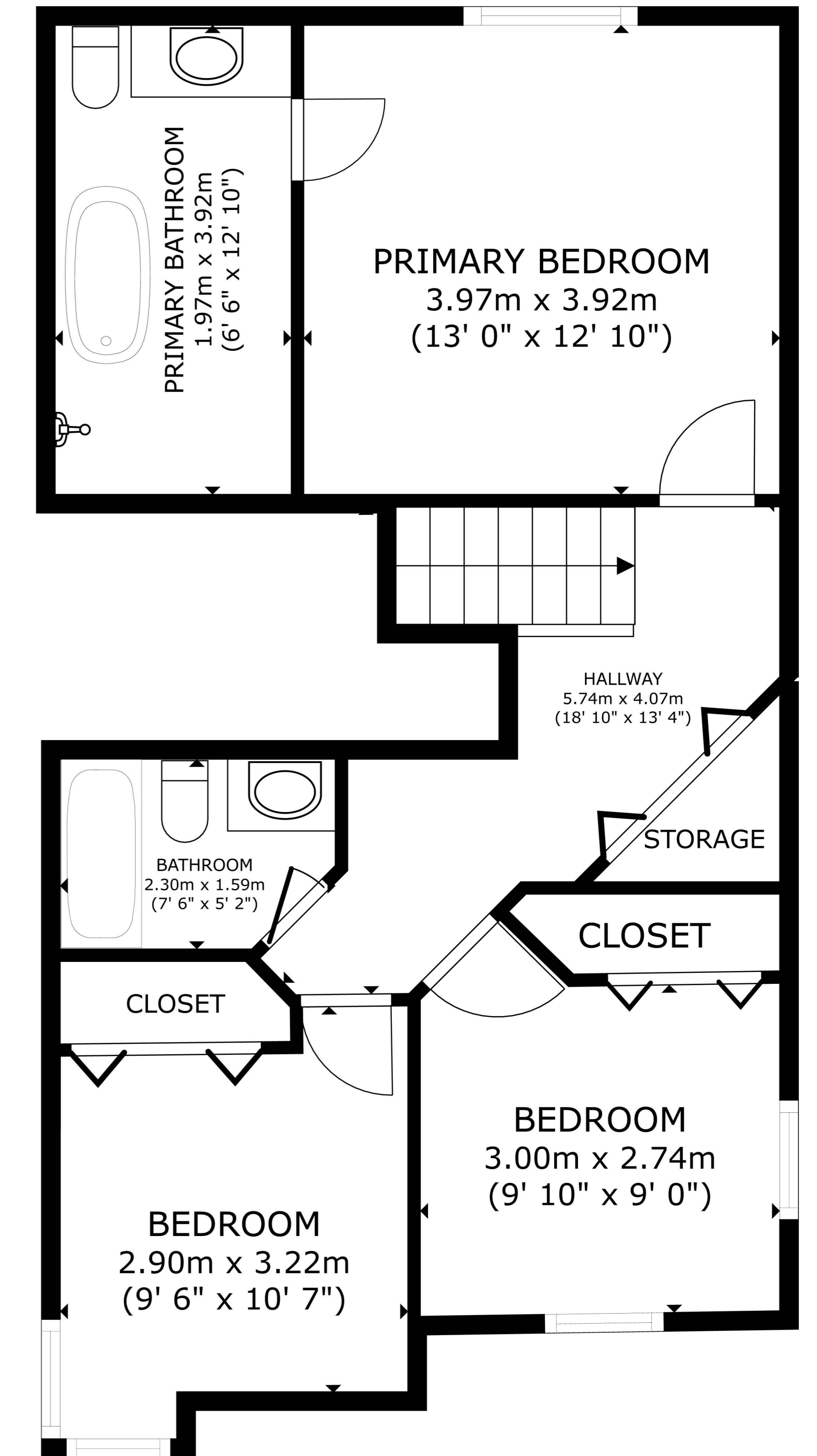
<b>MAIN</b>	<b>745 SQ.FT.</b>
<b>SECOND</b>	<b>716 SQ.FT.</b>
<b>TOTAL</b>	<b>1461 SQ.FT.</b>



**BASEMENT**  
58.05 m<sup>2</sup>(625 sq ft)



**MAIN FLOOR**  
69.16 m<sup>2</sup>(745 sq ft)



**SECOND FLOOR**  
66.54 m<sup>2</sup>(716 sq ft)